

Peakview IV

1221 West Mineral Ave, Littleton, CO 80120



PROPERTY HIGHLIGHTS

- Great Location with Easy Access to Littleton, Highlands Ranch, Ken Caryl, Englewood, Sterling Ranch and Greenwood Village
- Close Proximity to Multiple Medical Facilities, Including Littleton, UCHealth, and Children's Hospital
- Private Exterior Entrance Available
- Flexible Leasing Options from 2,000 - 6,368 SF
- Near Restaurants and Shopping



For leasing information please contact:

Matt Smith | 303.996.8460
msmith@premisescommercial.com

Michelle Gertzman | 720.743.6399
mgertzman@premisescommercial.com

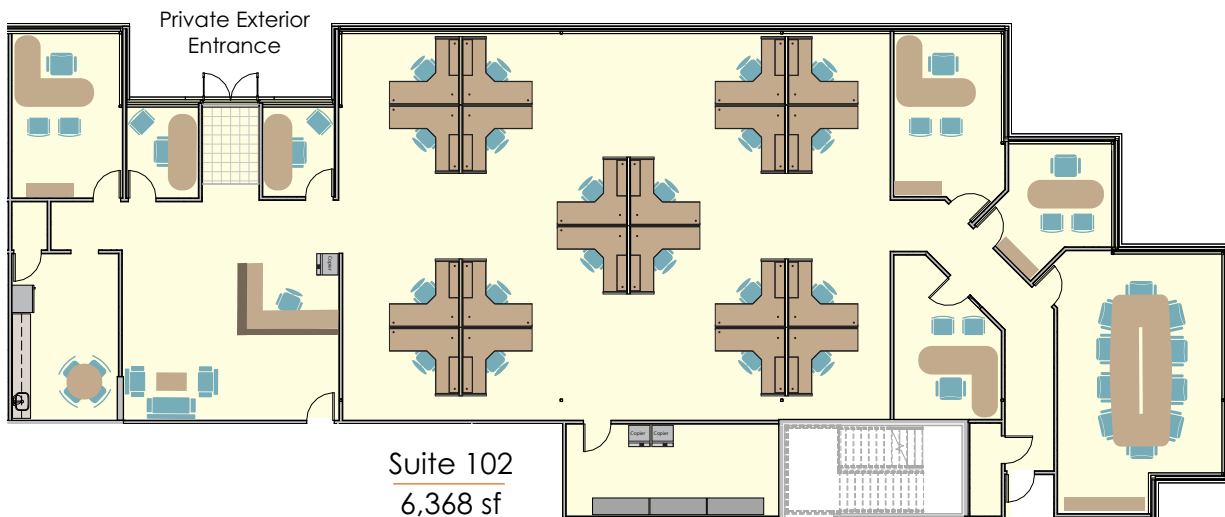
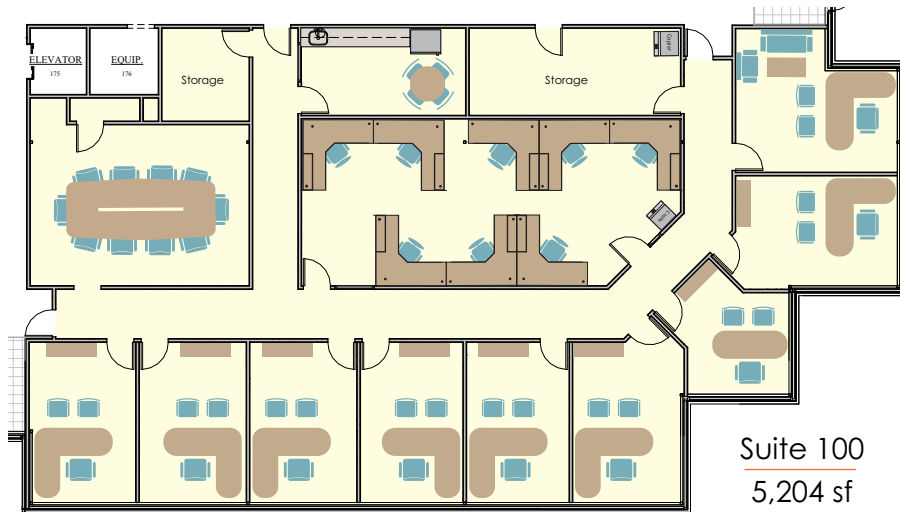
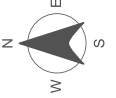
PREMISES
PREMISES COMMERCIAL REAL ESTATE LLC
WWW.PREMISESCOMMERCIAL.COM

Peakview IV

1221 West Mineral Ave, Littleton, CO 80120

AVAILABLE SUITES

First Floor



WWW.PREMISESCOMMERCIAL.COM

The information contained herein, while not guaranteed, has been secured from sources we believe to be reliable. Different brokerage relationships are available which include Seller/Landlord Agency, Buyer/Tenant Agency and Transaction Broker. Premises Commercial Real Estate, LLC is acting in this capacity as Landlord's/Sublessor's Agent, unless otherwise agreed, and owes its fiduciary allegiance to Landlord/Sublessor as defined by Colorado Real Estate Commission.