

# 101 North 10<sup>th</sup> Street – Suite 205

Williamsburg, Brooklyn, NY

**Location:** Between Wythe Ave and Berry St

**Suite 205:** 5,900 RSF

**Ceiling Height:** 13 FT

## Highlights:

- Newly renovated office suite located in the heart of Williamsburg.
- Lobby with elevator access.
- Space will be built out with a Kitchenette, Private bathroom, HVAC system, and Verizon Fios.
- Located 3 blocks from the **L** Train Station at Bedford Avenue & 5 Blocks from the **G** Train Station on Manhattan Avenue.
- Surrounded by five major hotels – *The Williamsburg Hotel*, *Wythe Hotel*, *The William Vale*, *The Hoxton*, and *McCarren Hotel & Pool*.



## Neighboring Tenants:



## Contact Exclusive Leasing Team



**Harrison Balisky**  
516-672-4493  
hb@olmstedre.com

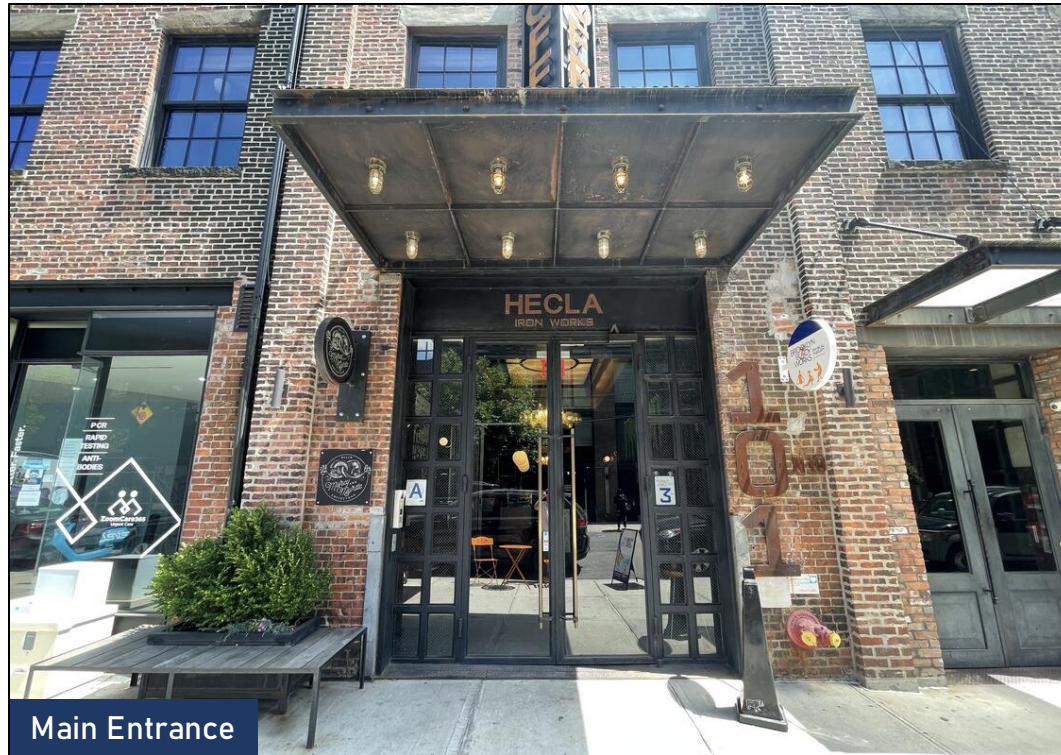
**Brad Krosser**  
862-368-7271  
bk@olmstedre.com



# 101 North 10<sup>th</sup> Street – Suite 205

Williamsburg, Brooklyn, NY

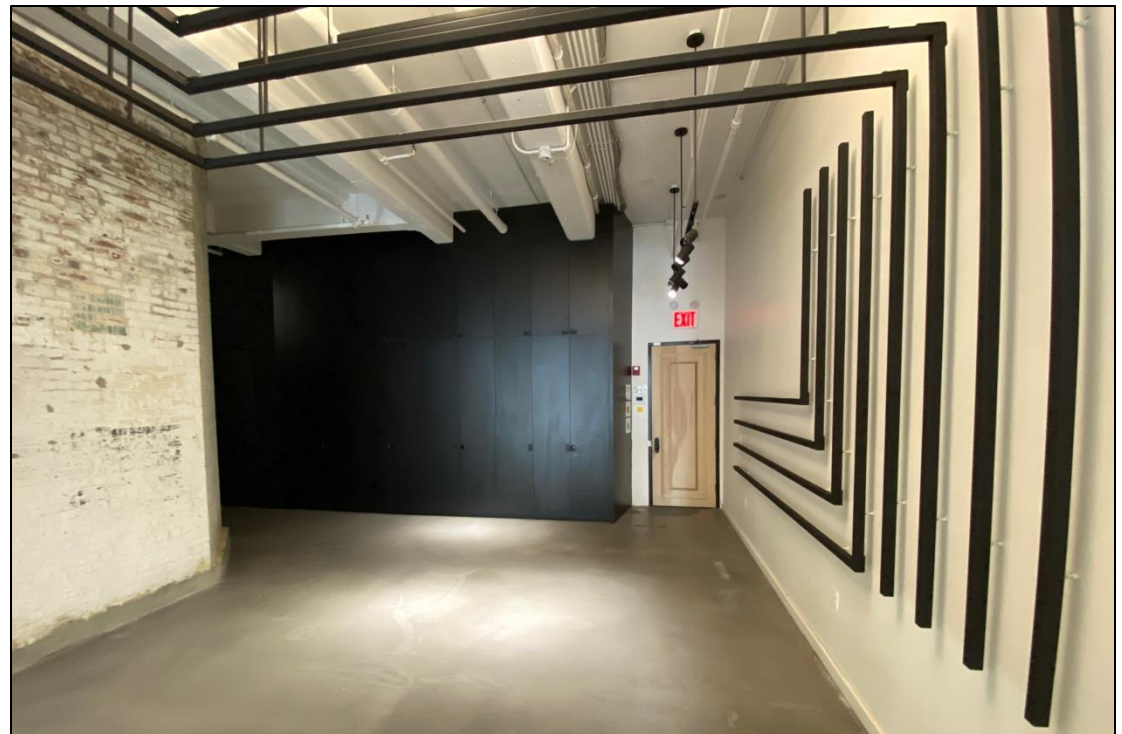
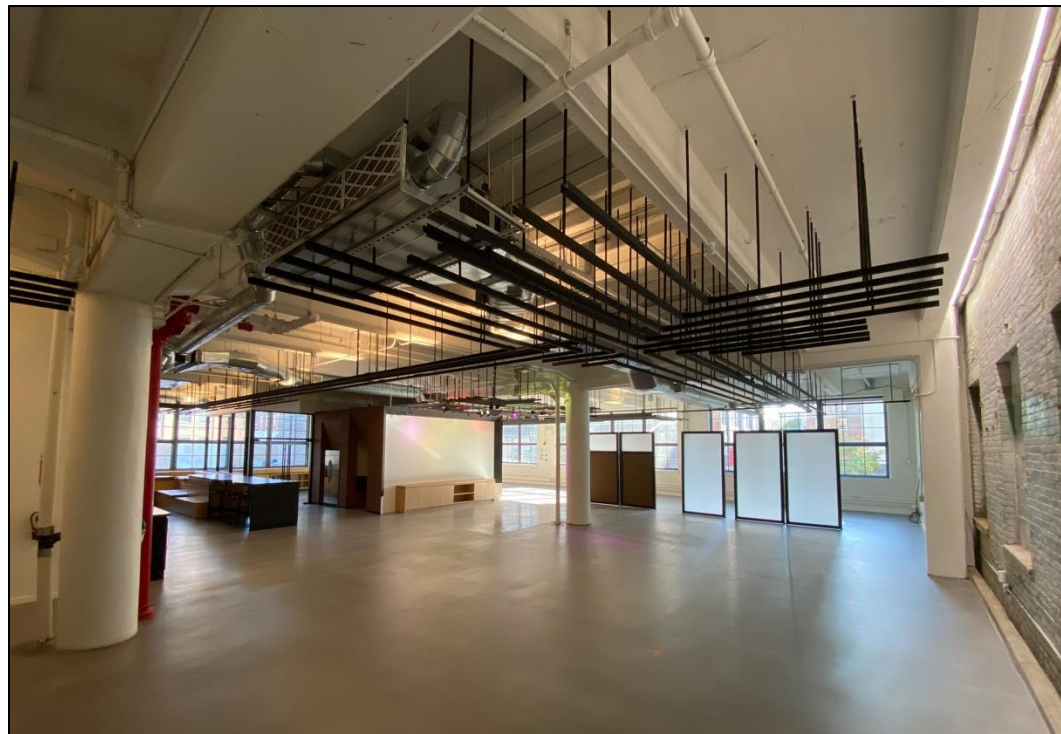
## Photos



Main Entrance



Front Lobby

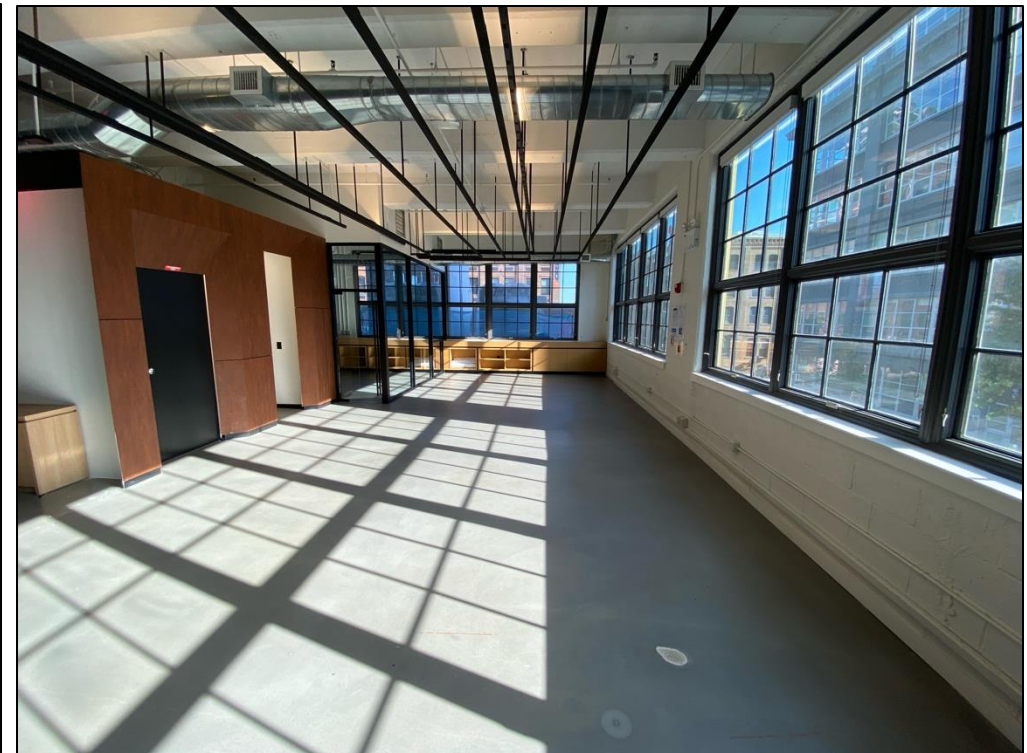
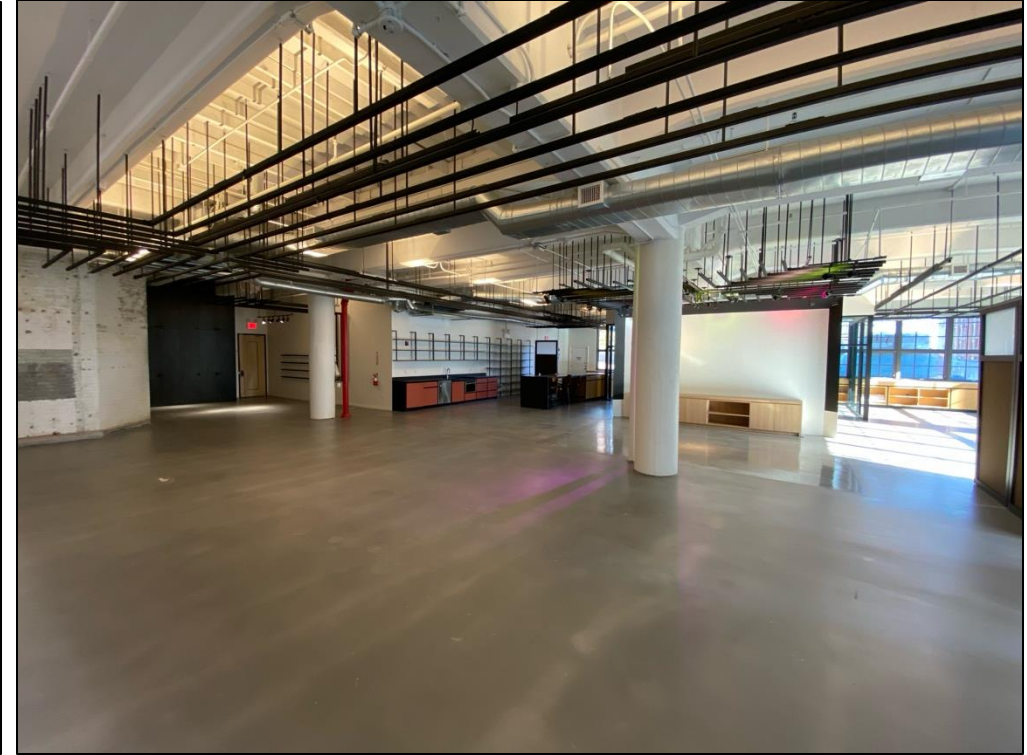




# 101 North 10<sup>th</sup> Street – Suite 205

Williamsburg, Brooklyn, NY

## Photos





# 101 North 10<sup>th</sup> Street – Suite 205

Williamsburg, Brooklyn, NY

## Photos

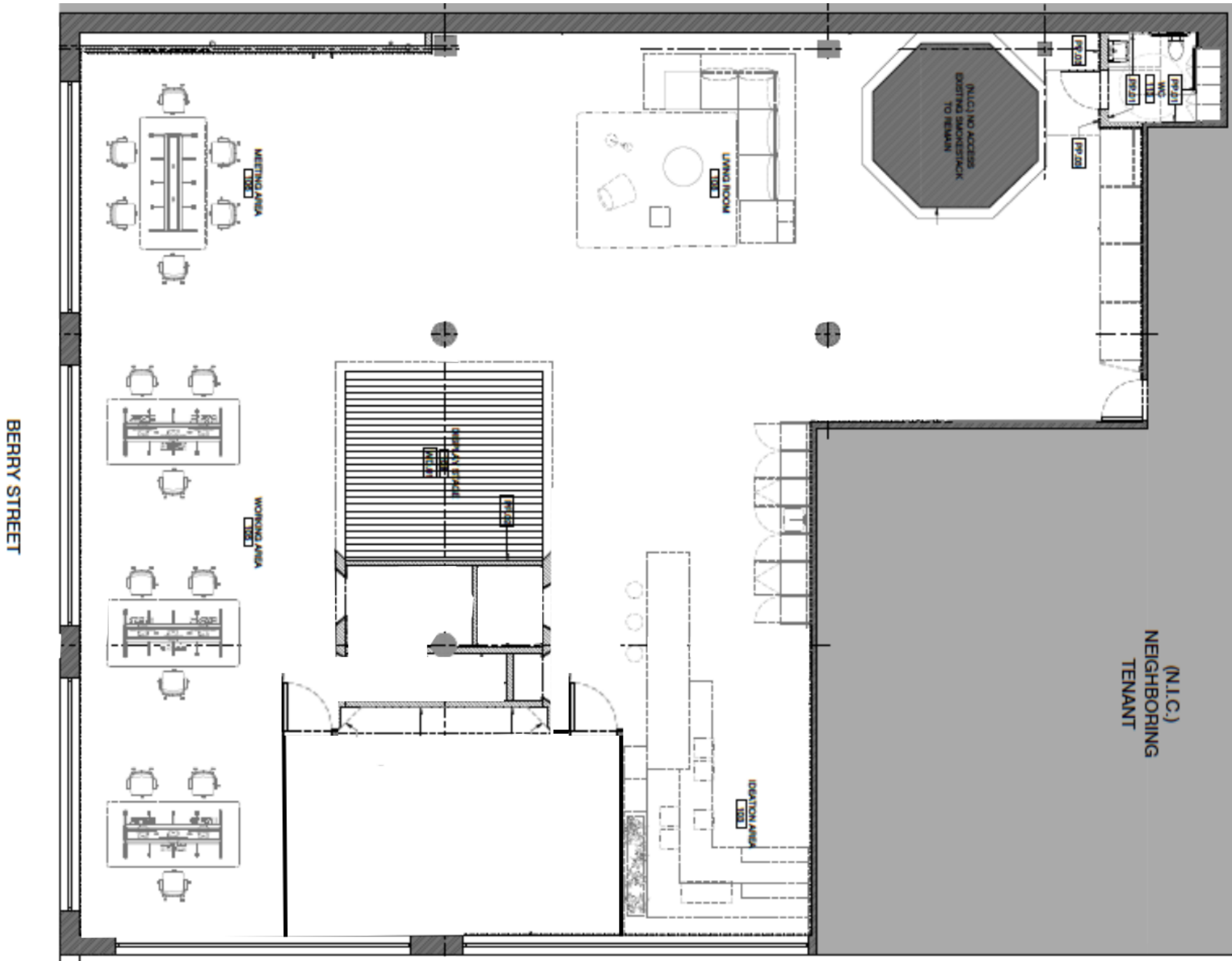




# 101 North 10<sup>th</sup> Street – Suite 205

Williamsburg, Brooklyn, NY

## Floorplans & Details



**Available Suite:**

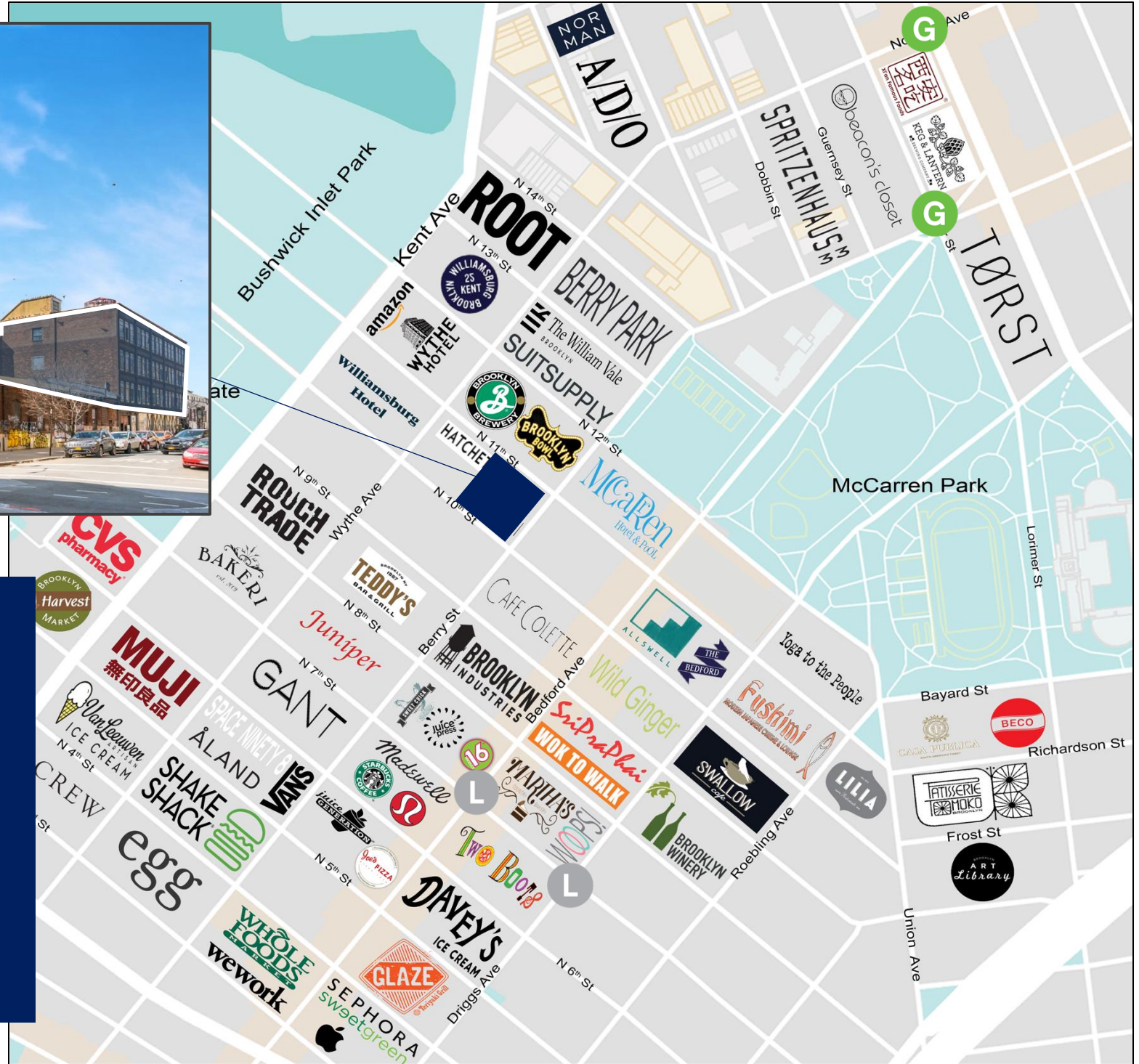
Suite 205: 5,900 RSF



# 101 North 10<sup>th</sup> Street – Suite 205

Williamsburg, Brooklyn, NY

## Retail Map



### Annual Subway Ridership

- L** train is 5 min away at **Bedford Avenue** station with 9,892,516 annual ridership
- G** train is 8 min away at **Nassau Avenue** station with 2,880,235 annual ridership