



**CUSHMAN &
WAKEFIELD**



**COMMERCIAL
ADVISORS**

LAND AVAILABLE

HWY 64 - 1.7 acres

11625 Highway 64 | TN 38028



1.7 ACRES AVAILABLE

6,962 SF

Property Highlights

- Excellent Hwy 64 frontage and access
- C-Store use approved
- All utilities in place
- Close proximity to I-385



Carson Claybrook

Vice President

901 252 6483

cclaybrook@commadv.com

5101 Wheelis Drive, Suite 300

Memphis, TN 38117

Main: 901 366 6070

www.commadv.com

Independently Owned and Operated / A Member of the Cushman & Wakefield Alliance

Cushman & Wakefield Copyright 2020. No warranty or representation, express or implied, is made to the accuracy or completeness of the information contained herein, and same is submitted subject to errors, omissions, change of price, rental or other conditions, withdrawal without notice, and to any special listing conditions imposed by the property owner(s). As applicable, we make no representation as to the condition of the property (or properties) in question. 030520



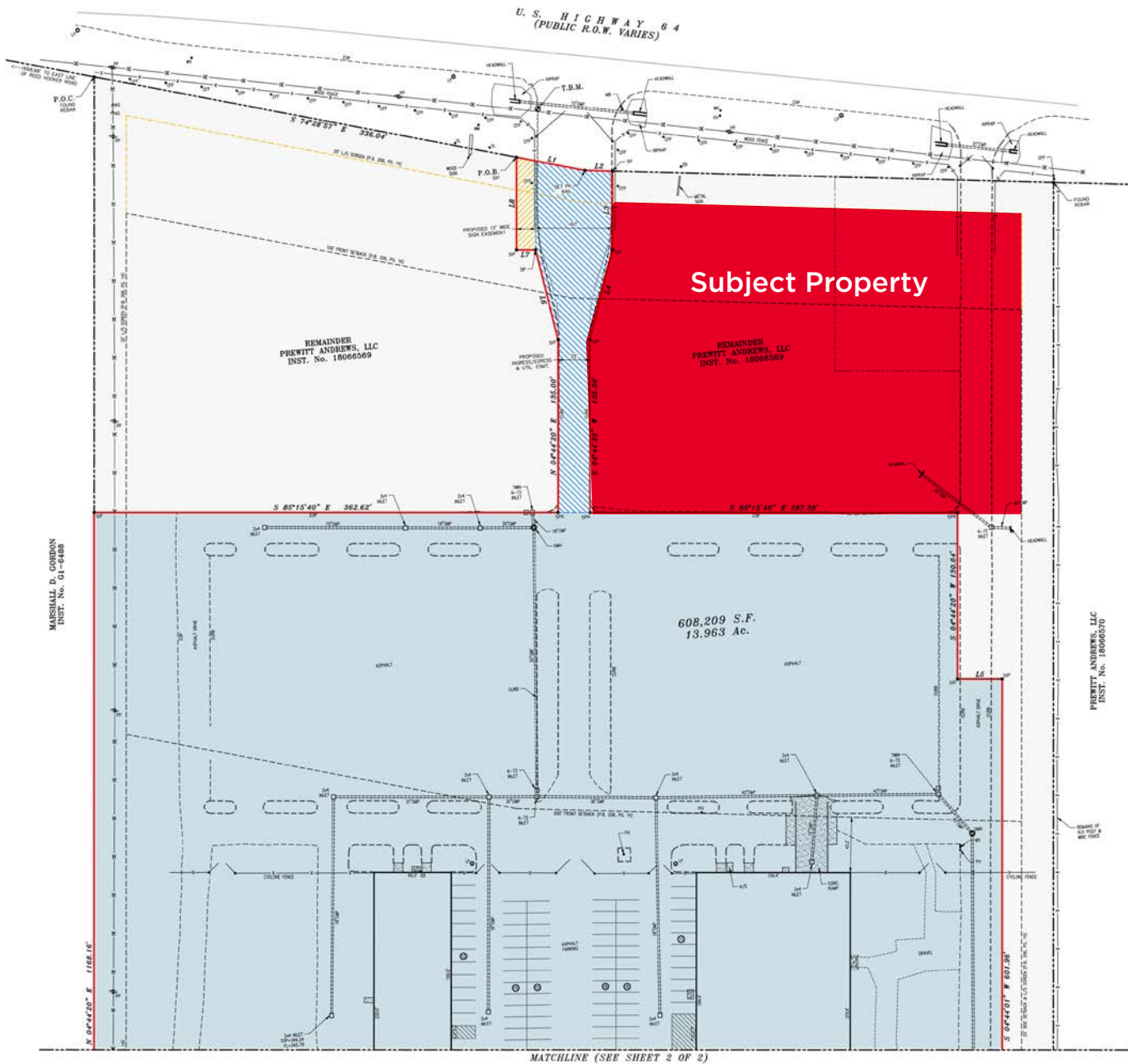
**CUSHMAN &
WAKEFIELD**



**COMMERCIAL
ADVISORS**

LAND AVAILABLE
HWY 64 - 1.7 acres
11625 Highway 64 | TN 38028

SITE PLAN



Carson Claybrook
Vice President
901 252 6483
cclaybrook@commadv.com

5101 Wheelis Drive, Suite 300
Memphis, TN 38117
Main: 901 366 6070
www.commadv.com

Independently Owned and Operated / A Member of the Cushman & Wakefield Alliance

Cushman & Wakefield Copyright 2020. No warranty or representation, express or implied, is made to the accuracy or completeness of the information contained herein, and same is submitted subject to errors, omissions, change of price, rental or other conditions, withdrawal without notice, and to any special listing conditions imposed by the property owner(s). As applicable, we make no representation as to the condition of the property (or properties) in question. 030520