

# VALLEY NATIONAL BANK PLAZA

## Class A Office Space for Lease

5220 Summerlin Commons Blvd.  
Fort Myers, FL 33907  
[www.cbre.com/tampa](http://www.cbre.com/tampa)



**CALL FOR  
RATES**



**3,576  
SF**



**53,640 SF  
GLA**



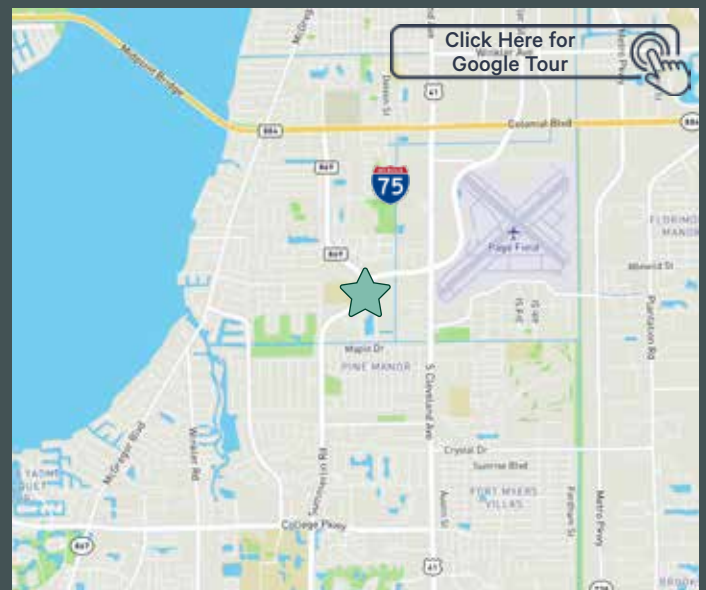
**\$12.00 PSF  
CAM RATE**

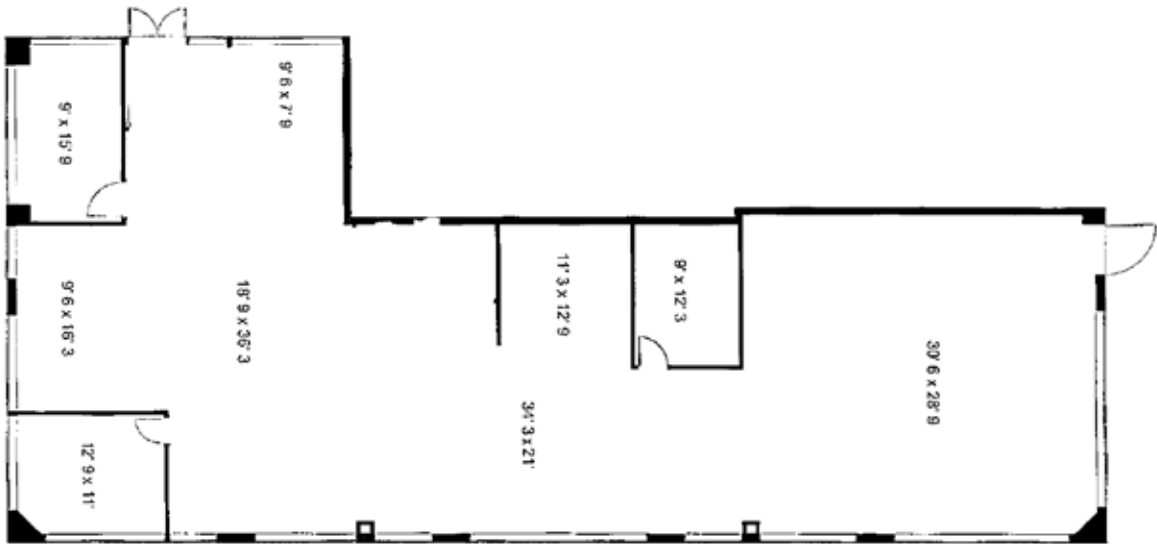


**7.01/1K SF  
PARKING**

### Key Property Highlights

- + 3,576 SF Class-A office for lease
- + Great views from prominent Class-A building
- + Full buildout in place with multiple private offices and open areas
- + Centrally located with easy access to arterial roadways
- + Visibility and frontage on Summerlin Road plus pylon signage opportunities available
- + Building is equipped with all of the latest internet necessities and fiber optics
- + Boy Scout Dr. AADT: 36,500 CPD
- + Summerlin Rd. AADT: 34,500 CPD





Contact Us

**Adam Palmer**  
Executive Vice President  
+1 239 898 8686  
adam@cbre.com

**Steve Wood, CCIM**  
Senior Associate  
+1 239 281 1001  
steve.wood1@cbre.com



2024 Demographics	1 Mile	3 Mile	5 Mile
Population	14,554	68,132	169,012
Avg. HH Income	\$73,082	\$93,599	\$102,711
Daytime Population	17,798	102,882	223,111
Median Age	36.8	44.3	50.4

© 2025 CBRE, Inc. All rights reserved. This information has been obtained from sources believed reliable, but has not been verified for accuracy or completeness. You should conduct a careful, independent investigation of the property and verify all information. Any reliance on this information is solely at your own risk. CBRE and the CBRE logo are service marks of CBRE, Inc. All other marks displayed on this document are the property of their respective owners, and the use of such logos does not imply any affiliation with or endorsement of CBRE. Photos herein are the property of their respective owners. Use of these images without the express written consent of the owner is prohibited.