



WELCOME TO **JUSTIN!**



JUSTIN
— 1887 —

www.cityofjustin.com

A thick, solid red vertical bar with rounded corners at the bottom, positioned on the left side of the page.

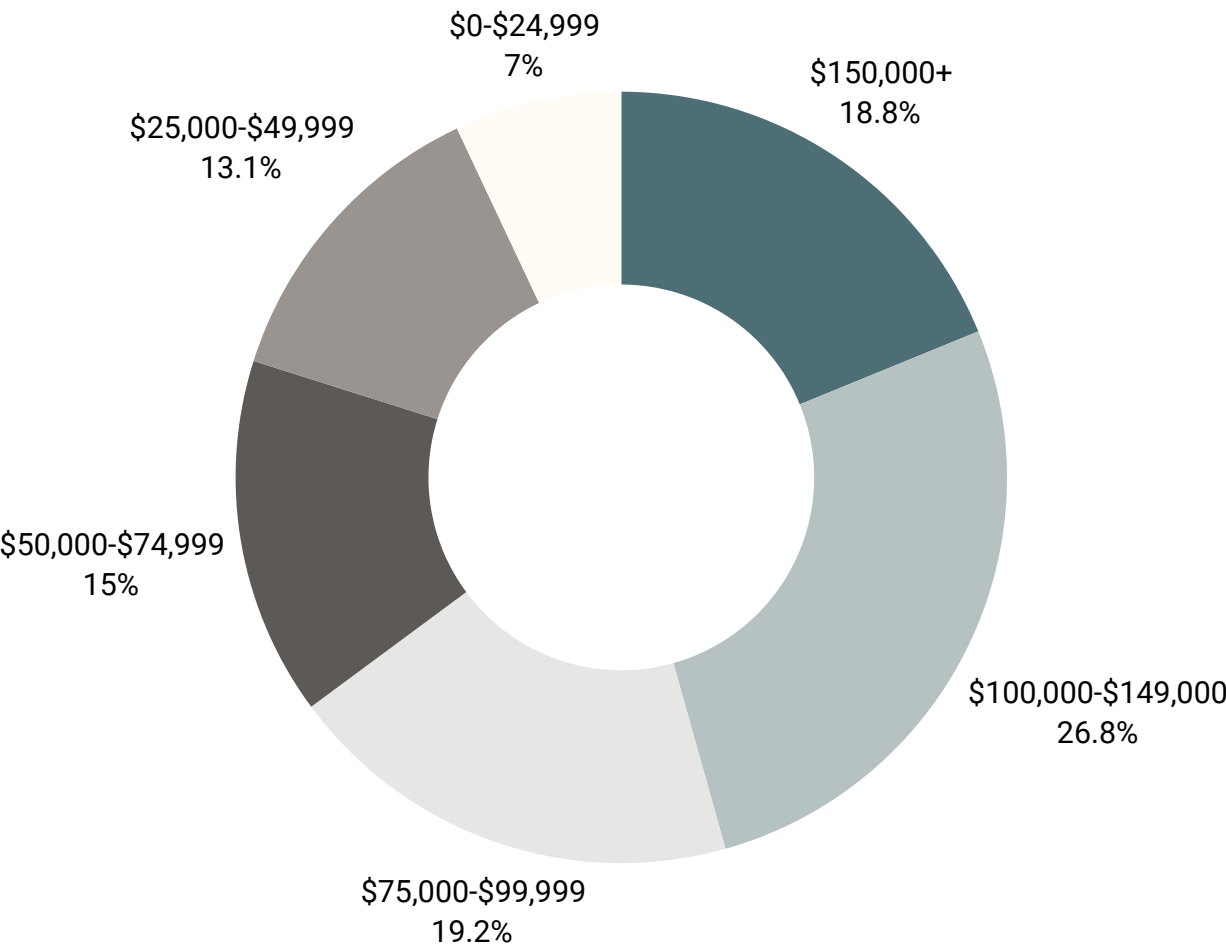
FOUNDED IN 1887,

Justin, a small suburban city in Denton County, was named after local rancher Justin Henger. Despite its growth and modernization, the city retains its rich history of cattle ranching and agriculture.

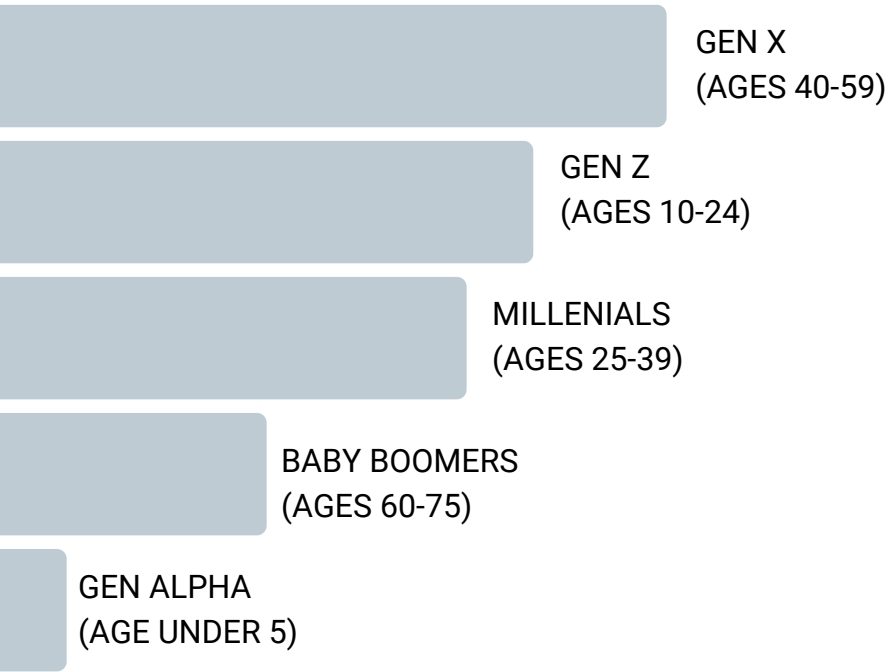
Known for its family-friendly environment and strong sense of community, Justin has experienced steady growth in recent years, emphasizing **sustainable development** and **economic progress**.

The City's Strategic Plan prioritizes infrastructure improvements, economic development, and environmental sustainability, all aimed at enhancing residents' quality of life, fostering economic prosperity, and ensuring community well-being.

HOUSEHOLD INCOME BY RANGE

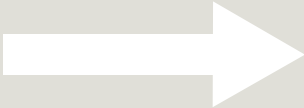


GENARATIONAL DISTRIBUTION



- MEDIAN HOUSEHOLD INCOME OF \$96,013
- 98.2% OF JUSTIN RESIDENTS COMMUTE TO A LOCATION OUTSIDE OF JUSTIN FOR DAILY WORK. - US CENSUS BUREAU

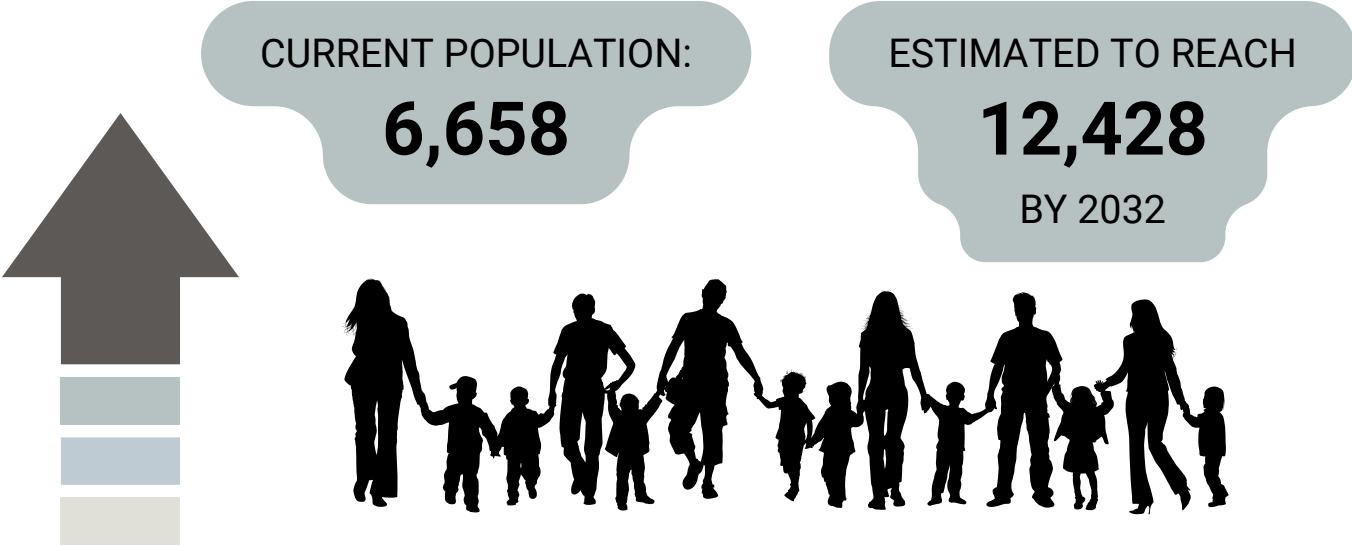
2% STAY FOR WORK



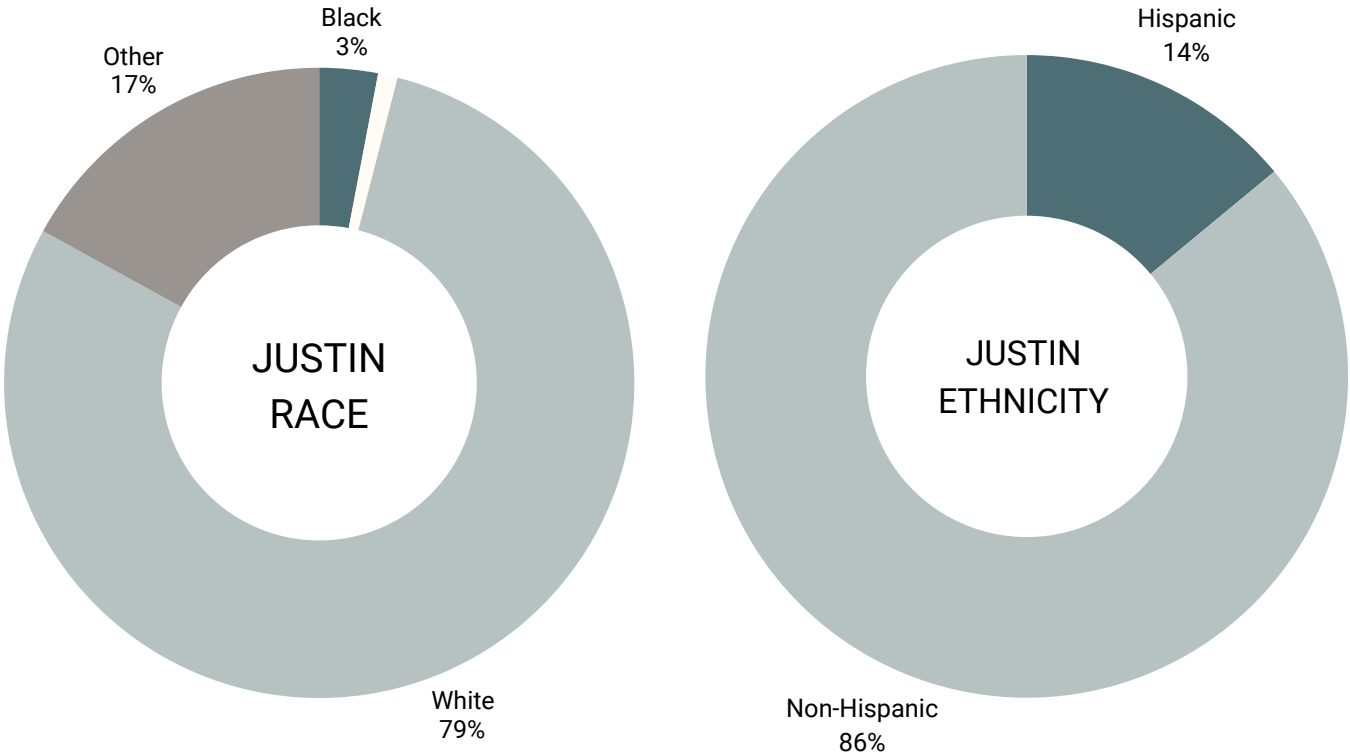
98% LEAVE FOR WORK

JUSTIN'S DEMOGRAPHICS

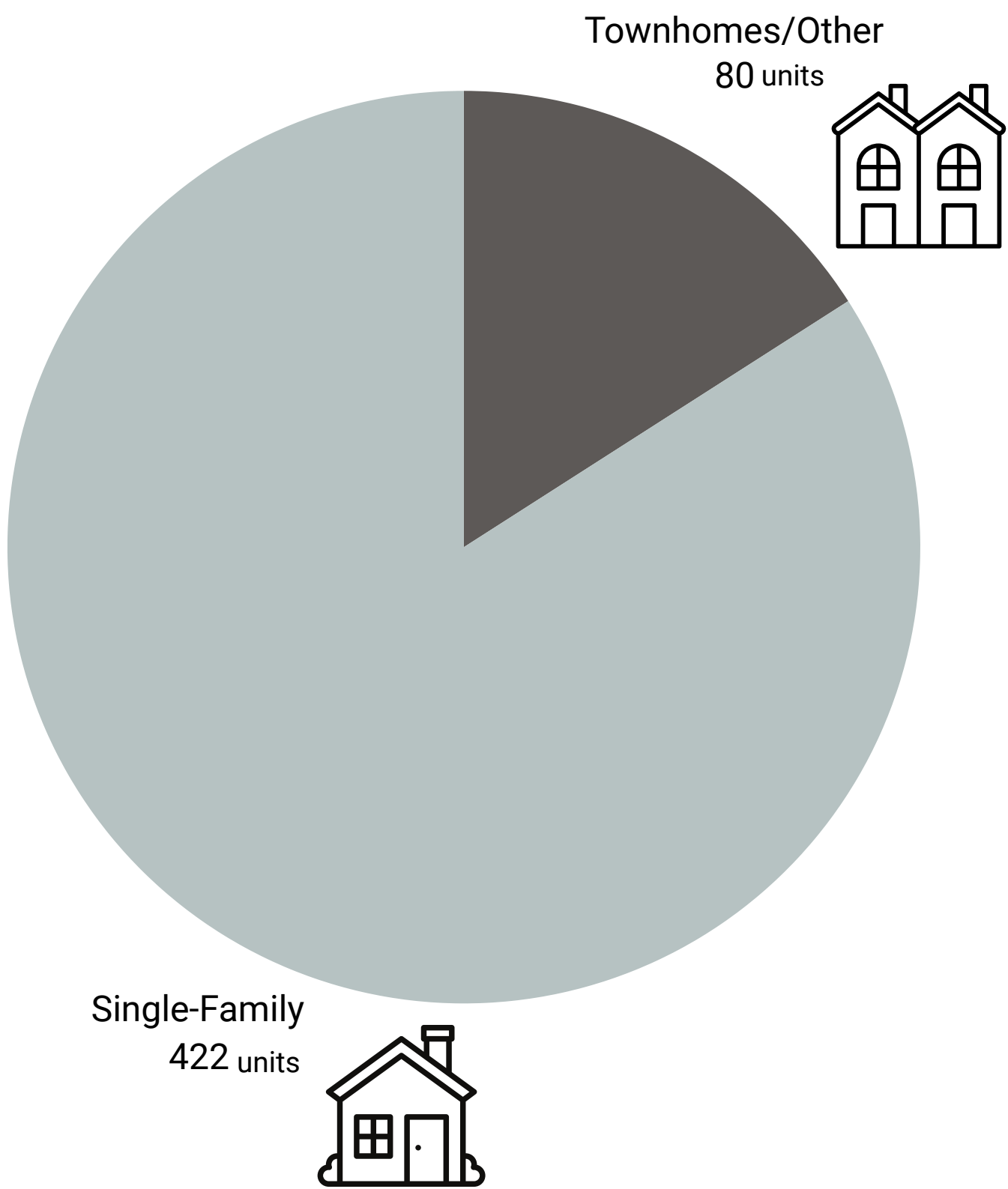
POPULATION



RACE / ETHNICITY

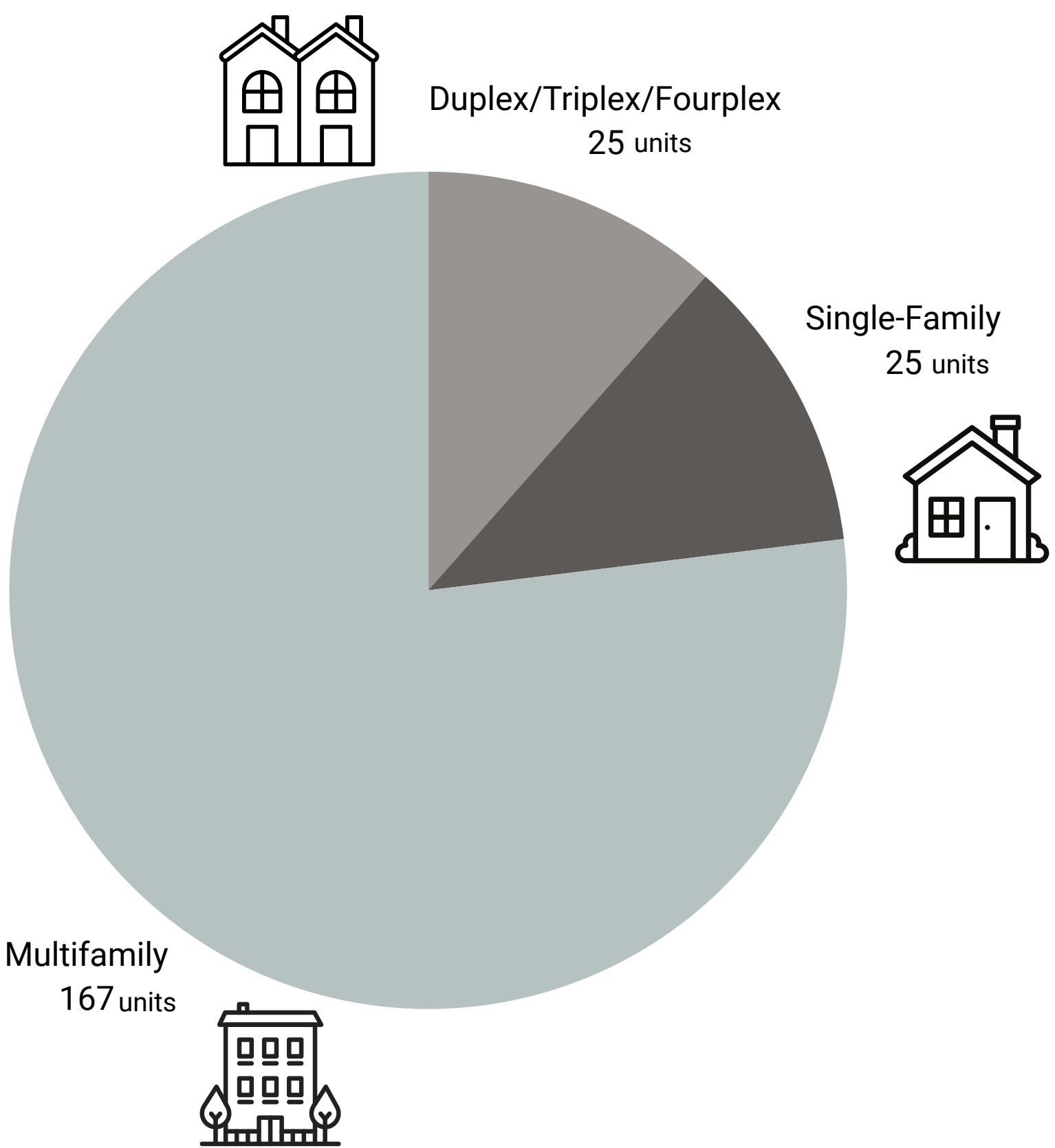


ANNUAL OWNER-OCCUPIED HOUSING DEMAND



- MEDIAN HOME VALUE OF \$311K
- 20% OF EXISTING HOUSING VALUED AT \$500K OR GREATER
- HALF OF HOUSING DEMAND IS FOR HOMES VALUED AT \$350K OR GREATER
- 89% OF HOUSING IS SINGLE-FAMILY DETACHED.

ANNUAL RENTER-OCCUPIED HOUSING DEMAND



WHY BRING YOUR BUSINESS TO JUSTIN?

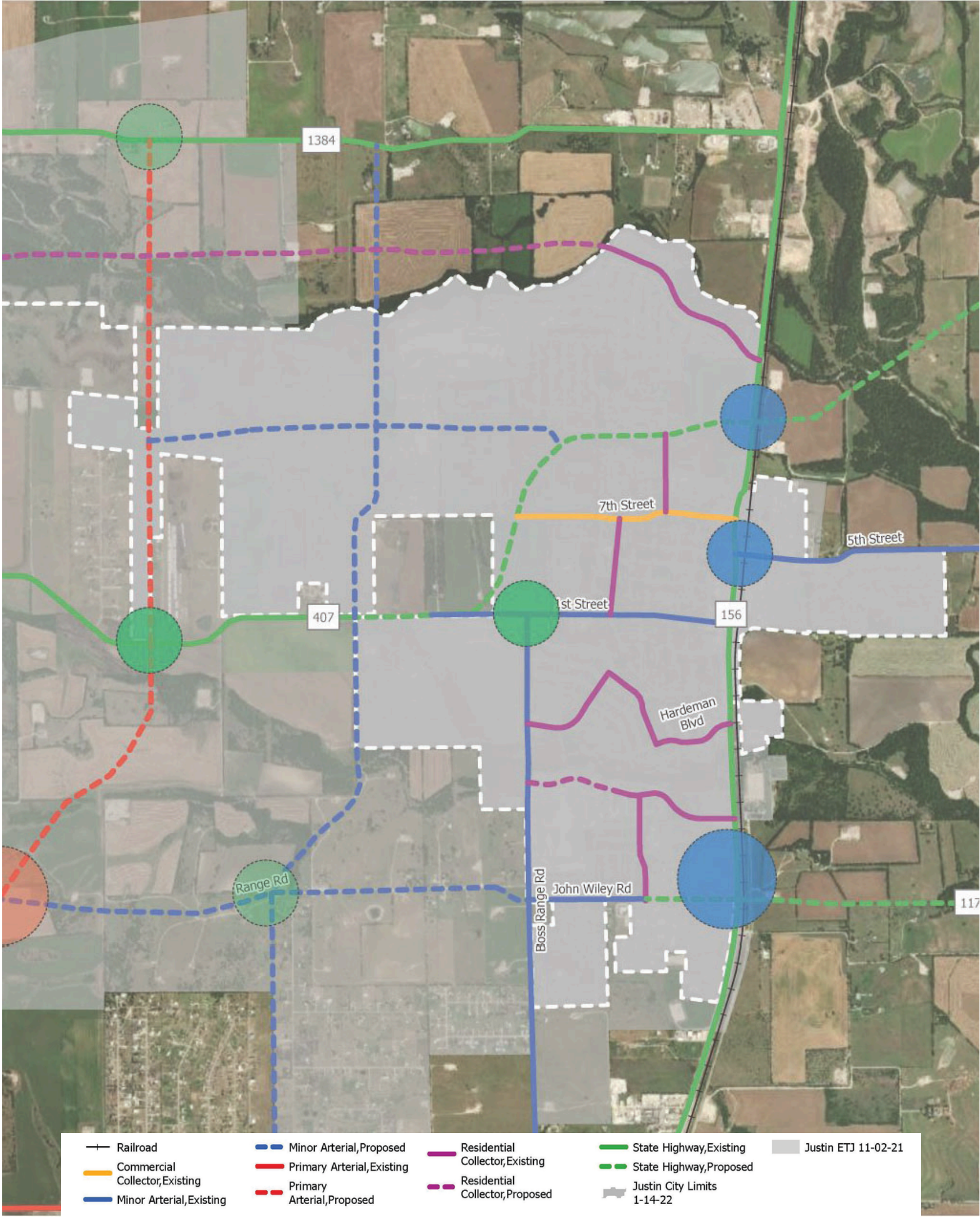
STRATEGIC LOCATION

Justin is located at the heart of the fastest-growing area in the Dallas-Fort Worth Metroplex.

- 8 miles North of Alliance Airport
- 22 miles from DFW Airport
- 8 miles from BNSF Alliance
- 5 miles to Hwy 114
- 6 miles to I-35W
- 11 miles to Hwy 380
- 14 miles from Hwy 287
- 10 miles from Circle T Ranch
- 10 miles from Charles Schwab Corporate
- 12 miles from Deloitte University
- 5 miles from Texas Motor Speedway
- 5 miles from Tanger Outlets Fort Worth



MOBILITY PLAN



WHY BRING YOUR BUSINESS TO JUSTIN?

GROWING COMMUNITY

Expanding Population: With a steadily growing population, businesses have access to an increasing customer base and a vibrant community.

Northwest ISD is one of the fastest-growing school districts in the state, estimating more than 1,000 new students a year.

ECONOMIC OPPORTUNITIES

Business Incentives: Justin offers various incentives for businesses, including tax breaks and grants, which can lower operational costs and encourage growth.

Diverse Economy: The city has a diverse economic base, which provides stability and opportunities across different sectors

QUALITY OF LIFE

Education: Excellent schools in the Northwest Independent School District provide a solid foundation for families, attracting skilled employees.

Recreation and Culture: With parks, community events, and a strong sense of community, Justin is an attractive place to live and work.

PARKS & TRAILS





Timberbrook Dog Park

415 N College Ave, Justin, TX 76247

Amenities	Condition
Shade Trees	<div><div></div></div>
Dog Park Areas	<div><div></div></div>
Walking Trails (Concrete)	<div><div></div></div>



Timberbrook Park

1100 Kettlewood Dr, Justin, TX 76247

Amenities	Condition
Play Structure	<div><div></div></div>
Walking Trail (concrete)	<div><div></div></div>
Shade Structures/Trees	<div><div></div></div>
Picnic Tables	<div><div></div></div>
Trash Bins	<div><div></div></div>
Benches	<div><div></div></div>



Tally Park

Meadowview Dr, Justin, TX 76247

Amenities	Condition
Pond/Fountain	<div><div></div></div>
Shade Trees	<div><div></div></div>



Community Park

420 Ovaletta Dr, Justin, TX 76247

Amenities	Condition
Play Structures	<div><div></div></div>
Baseball/Softball Fields	<div><div></div></div>
Soccer Fields/Basketball	<div><div></div></div>
Disc Golf (9-Hole)	<div><div></div></div>
Walking Trail (Concrete)	<div><div></div></div>
Shade Structures/Trees	<div><div></div></div>
Parking Lot	<div><div></div></div>
Trash Bins	<div><div></div></div>
Benches	<div><div></div></div>
Picnic Tables	<div><div></div></div>



Justin Park (City Hall)

415 N College Ave, Justin, TX 76247

Amenities	Condition
Tennis Court	<div><div></div></div>
Sand Volleyball Court	<div><div></div></div>
Play Structures	<div><div></div></div>
Shade Structures/Trees	<div><div></div></div>
Picnic Tables	<div><div></div></div>
Trash Bins	<div><div></div></div>
Benches	<div><div></div></div>
B.B.Q. Grills	<div><div></div></div>
Parking Lot	<div><div></div></div>



Reatta Park

John Wiley Rd and Reatta Dr, Justin, TX 76247

Amenities	Condition
Basketball Court	<div><div></div></div>
Walking Trail (gravel)	<div><div></div></div>
Play Structures	<div><div></div></div>
Shade Structures/Trees	<div><div></div></div>
Observation Deck	<div><div></div></div>
Trash Bins	<div><div></div></div>
Picnic Tables	<div><div></div></div>
B.B.Q. Grills	<div><div></div></div>



FUTURE DEVELOPMENT

Infrastructure Improvements: Ongoing and planned infrastructure projects ensure that the city's facilities and services can keep pace with growth, making it easier for businesses to thrive.

Strategic Planning:

The City's forward-thinking strategic plan focuses on sustainable growth, ensuring long-term success for businesses and residents alike.

BY CHOOSING **JUSTIN,**



Businesses gain access to a strategic location, a growing community, economic incentives, and a high quality of life. The city's commitment to fostering a supportive business environment makes it an ideal destination for new ventures and expansions.



Deborah Walls

817-528-1626

dwalls@glaciercommercial.com

www.glaciercommercial.com