



FOR SALE

50.59 Acres

205 MILL STREET

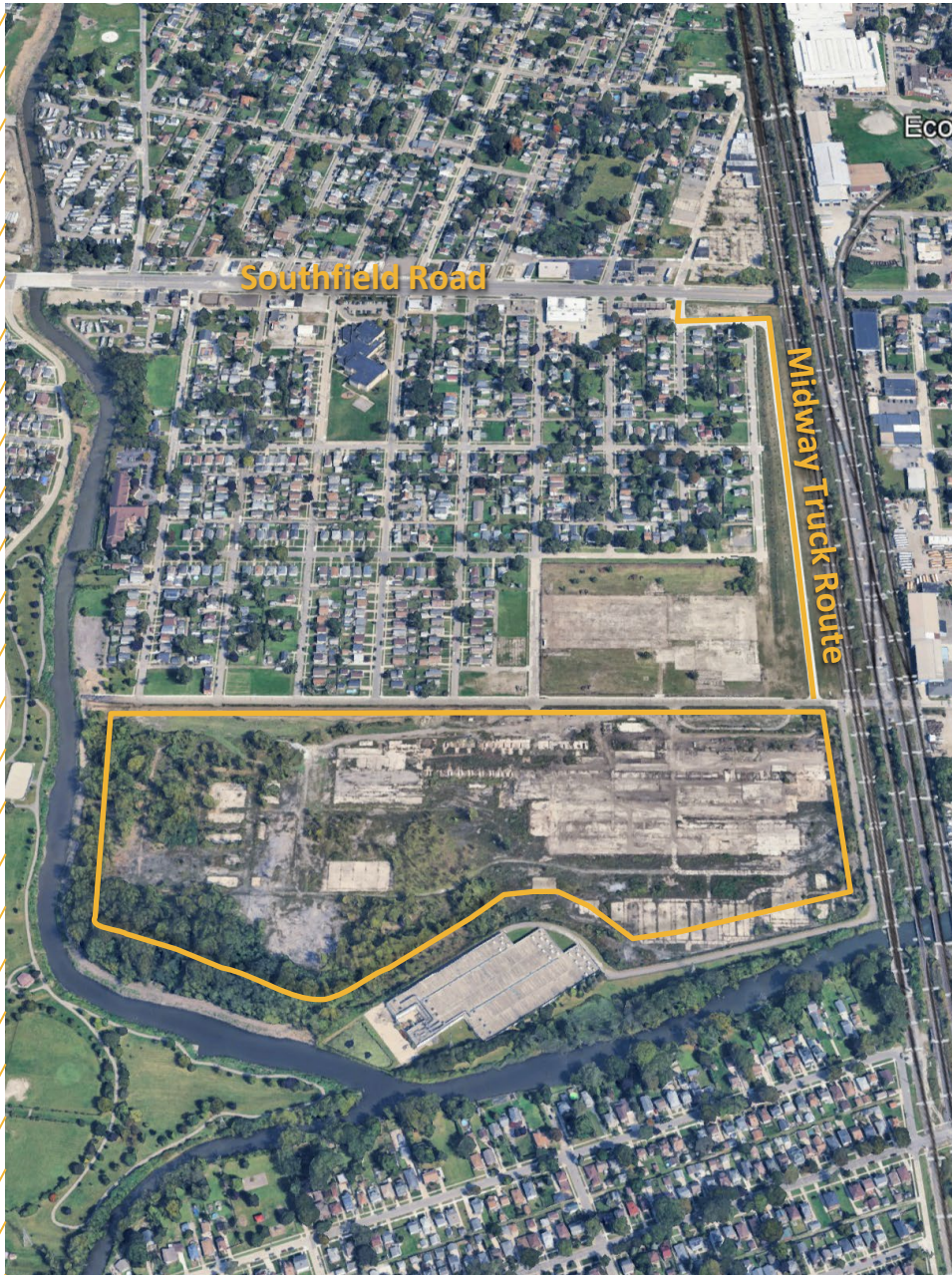
ECORSE, MI 48229



CUSHMAN &
WAKEFIELD

PROPERTY HIGHLIGHTS

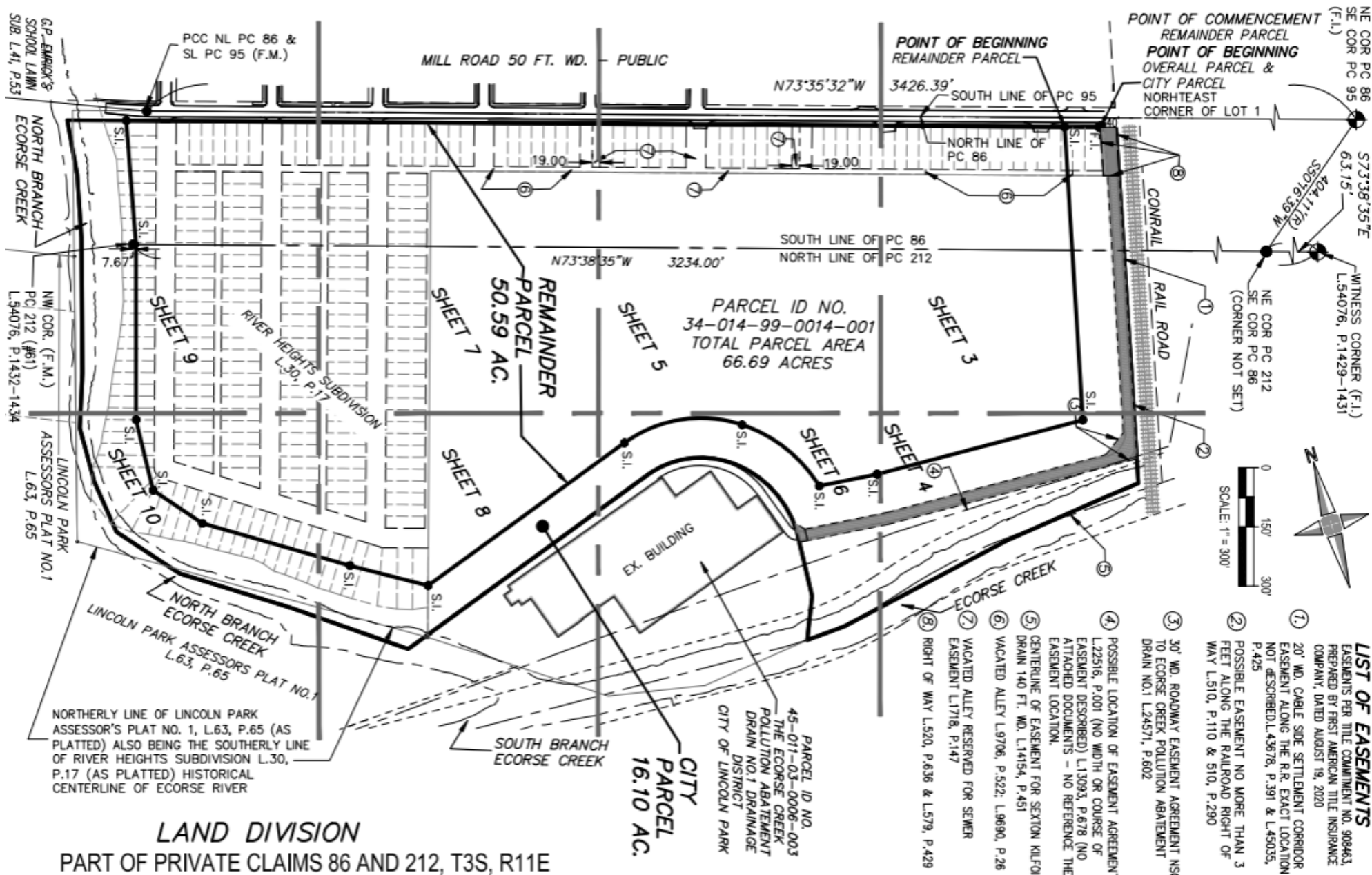
205 MILL STREET | ECORSE, MI



Address	205 Mill Street Ecorse, MI 48829
County	Wayne
Land Area (Acres)	+/-50 acres
Parcel ID	34-014-99-0014-002
Zoning	Light Industrial
Square Footage	Potential for up to +/-900,000 SF
Electricity	DTE – 4.8 kV aerial system on south side of Mill Street, 40 kV underground system on north side of Mill Street, and 120 kV aerial system on east and south side of site
Natural Gas	DTE - 6" medium-capacity main w/MAOP of 35 psig and 12" high-capacity main w/MOAP of 45 psig at north side of Mill Street.
Water	City of Ecorse - 12" water main along Mill Street w/two 12" stubs in place
Sewer	City of Ecorse - 12" sanitary sewer at the Site at Mill Street
Railway	Class I CN railroad on E side of site
Freeway Access	2 miles to I-75 via Southfield Road
Site Access	Dedicated access to Southfield Road via new, class A Midway Truck Route
Asking Price	\$5,000,000 (\$100,000/acre)
Additional Info	VIP On-Site Investigation Report Click here for drone flight (10/9/24) VIP Website
Miscellaneous	<ul style="list-style-type: none">Existing environmental and geotechnical studiesNo wetland/delineation availableFederal, local, and state incentives available

SITE PLAN

205 MILL STREET | ECORSE, MI

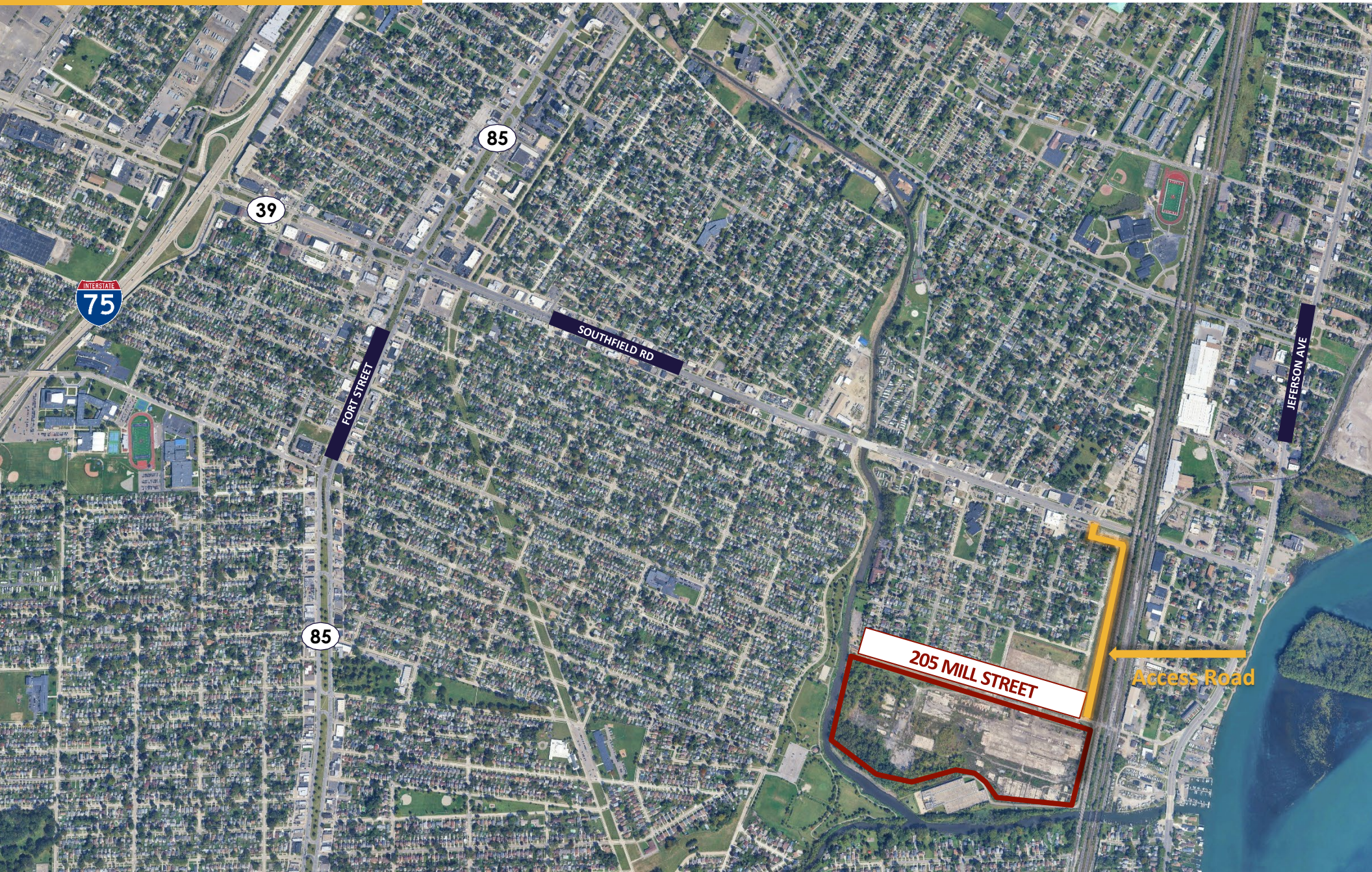


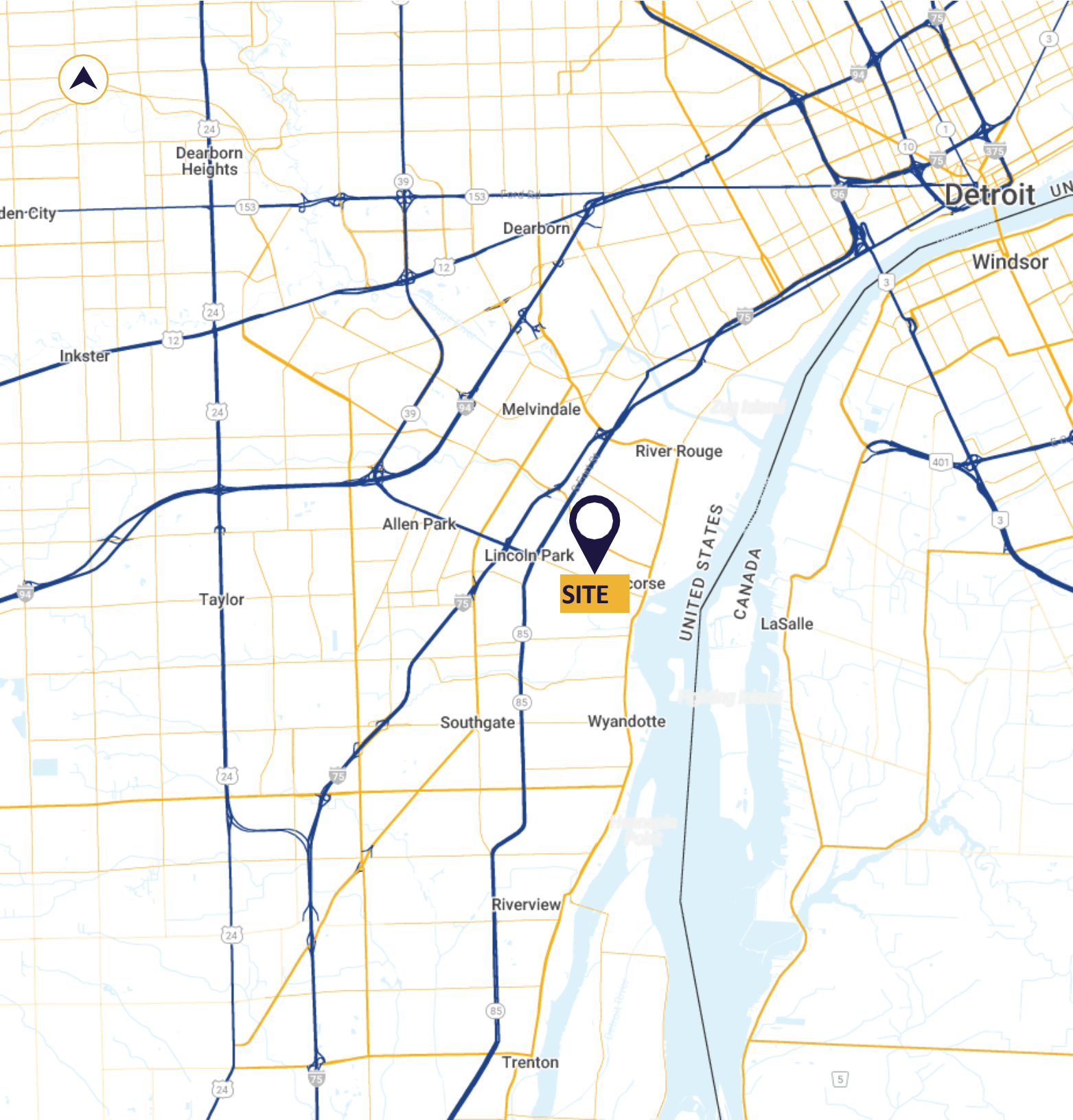
PHOTOS



AERIAL LOCATION

205 MILL STREET | ECORSE, MI





2 MILES

TO INTERSTATE 75

13 MILES

TO DETROIT

10 MILES

TO AMBASSADOR BRIDGE

6 MILES

TO GORDIE HOWE BRIDGE

73 MILES

TO BLUE WATER BRIDGE

14 MILES

TO WINDSOR, CA

50 MILES

TO TOLEDO, OH

The image shows a map of Michigan with its county boundaries. A yellow callout box highlights the Wayne County area, which is then expanded into a larger, detailed map of the Detroit metropolitan area. This detailed map shows various suburbs, major highways (interstates and state routes), and the city of Detroit itself. The city of Detroit is labeled in bold black text. The map also shows the Detroit River and the surrounding water bodies.

DEMOGRAPHICS 2024 ESTIMATED



- University of Michigan
- Wayne State University
- Central Michigan University
- Detroit Mercy Law
- Wayne County Community College
- Henry Ford College
- Dorsey College – Dearborn
- College for Creative Studies
- Schoolcraft Community College
- Oakland Community College



Bachelor Degree: 22%
High School Diploma: 33%

FOR SALE

205 MILL STREET



CONTACT INFORMATION

TONY AVENDT

Executive Director

+1 248 358 6115

tony.avendt@cushwake.com

CONNER SALSBERY

Director

+1 248 358 6114

conner.salsberry@cushwake.com



©2025 Cushman & Wakefield. All rights reserved. The information contained in this communication is strictly confidential. This information has been obtained from sources believed to be reliable but has not been verified. NO WARRANTY OR REPRESENTATION, EXPRESS OR IMPLIED, IS MADE AS TO THE CONDITION OF THE PROPERTY (OR PROPERTIES) REFERENCED HEREIN OR AS TO THE ACCURACY OR COMPLETENESS OF THE INFORMATION CONTAINED HEREIN, AND SAME IS SUBMITTED SUBJECT TO ERRORS, OMISSIONS, CHANGE OF PRICE, RENTAL OR OTHER CONDITIONS, WITHDRAWAL WITHOUT NOTICE, AND TO ANY SPECIAL LISTING CONDITIONS IMPOSED BY THE PROPERTY OWNER(S). ANY PROJECTIONS, OPINIONS OR ESTIMATES ARE SUBJECT TO UNCERTAINTY AND DO NOT SIGNIFY CURRENT OR FUTURE PROPERTY PERFORMANCE.