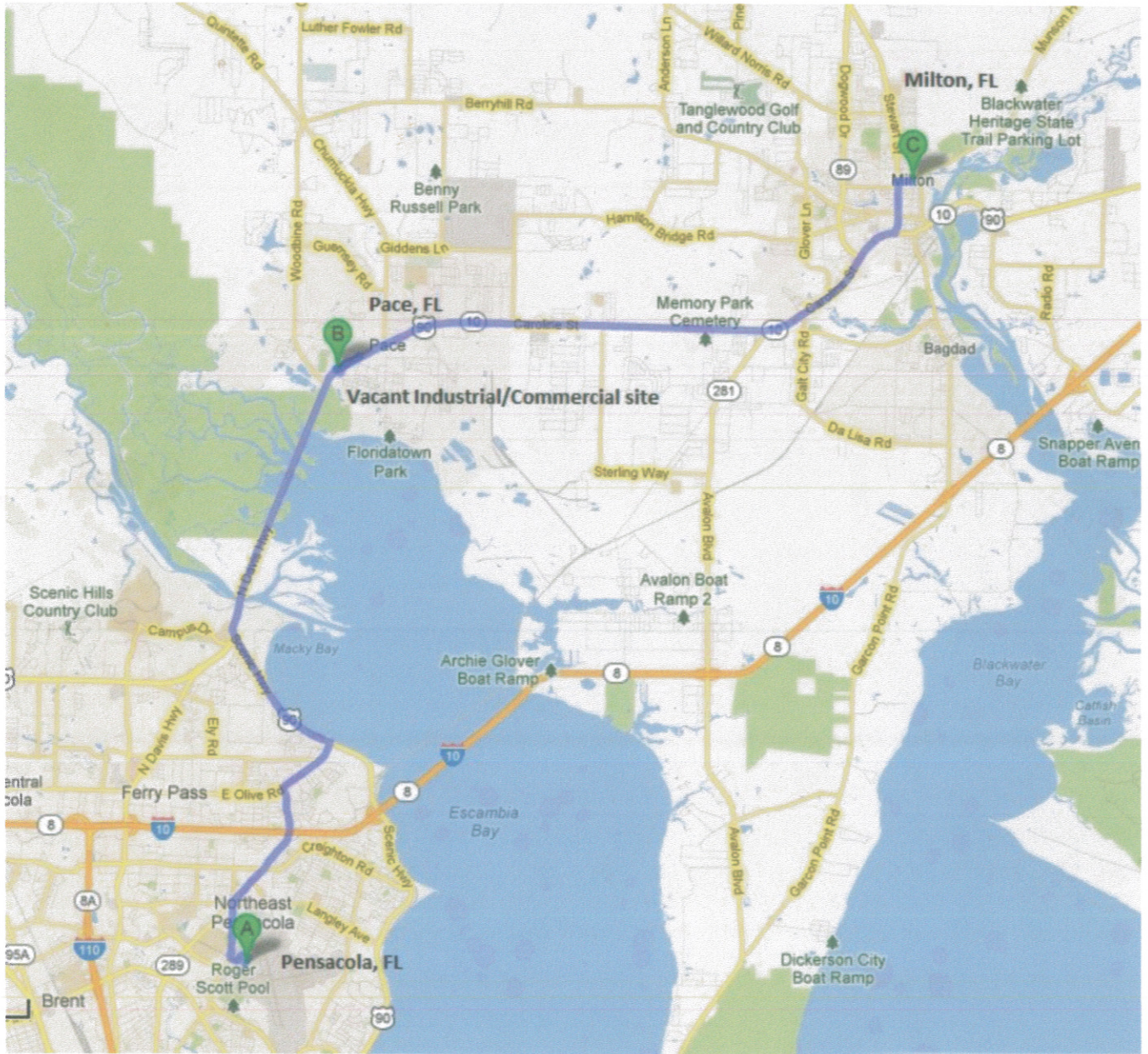


Florida Land & Investments, Inc.



# Hwy 90-Pace Vacant Industrial/Commercial Site

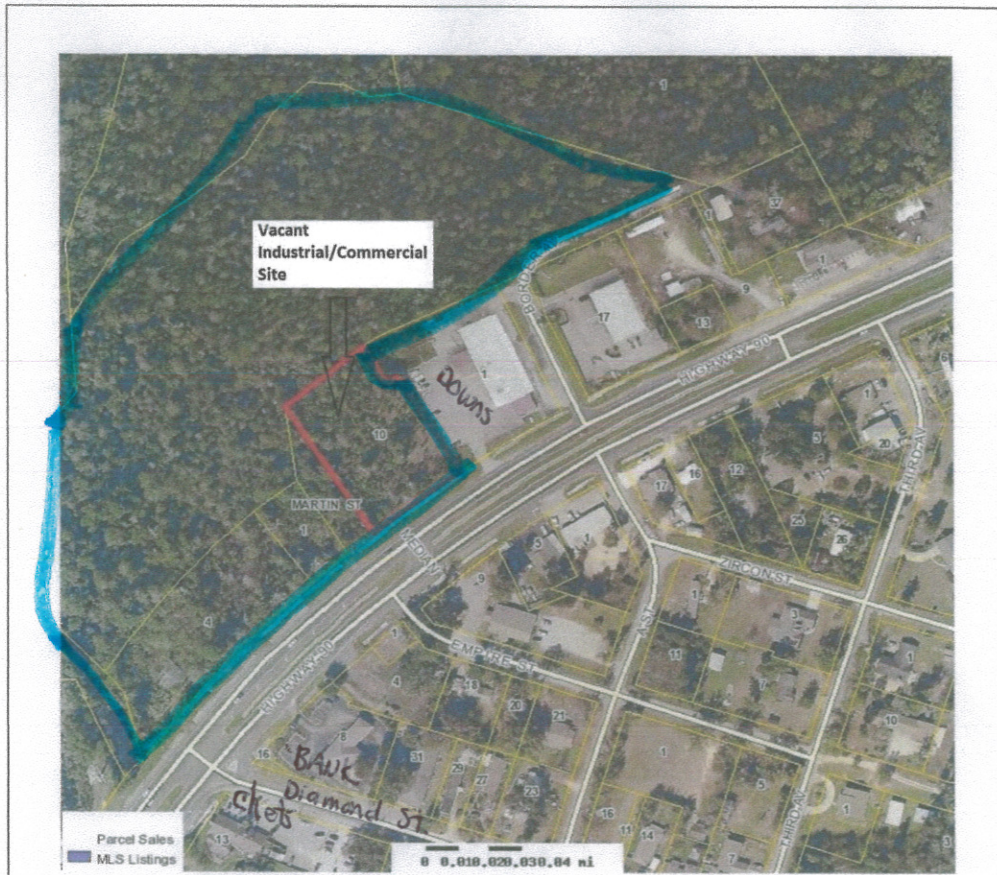


Florida Land & Investments, Inc.



# Hwy 90-Pace Vacant Industrial/Commercial Site

#1.8 Million



Santa Rosa County Property Appraiser			
Parcel: 23-1N-29-1240-03700-0100 Acres: <b>#13.5 AC</b>			
Name:	PENSACOLA POOLS INC	Land Value	220,896
Site:	HWY 90	Building Value	0
Sale:	\$385,000 on 08-2004 Vacant=Y Qual=C	Misc. Value	0
	8514 PENSACOLA BLVD	Just Value	220,896
Map:	PENSACOLA, FL 32534	Assessed Value	220,896
		Exempt Value	0
		Taxable Value	220,896



The Santa Rosa County Property Appraiser's Office makes every effort to produce the most accurate information possible. No warranties, expressed or implied, are provided for the data herein, its use or interpretation. The assessment information is from the last certified taxroll. All data is subject to change before the next certified taxroll. PLEASE NOTE THAT THE PROPERTY APPRAISER MAPS ARE FOR ASSESSMENT PURPOSES ONLY NEITHER SANTA ROSA COUNTY NOR ITS EMPLOYEES ASSUME RESPONSIBILITY FOR ERRORS OR OMISSIONS --THIS IS NOT A SURVEY--

Date printed: 05/20/13 : 15:14:39