

# 2126 DEFOORS FERRY RD NW

ATLANTA, GA  
30318

**FOR SALE / LEASE**  
**12,000± SF Office Building**

**ED SMITH, CCIM**

*Vice President*

404.942.2082

[esmith@kingindustrial.com](mailto:esmith@kingindustrial.com)

**WILSON COVINGTON, SIOR**

*Senior Vice President*

404.942.2073

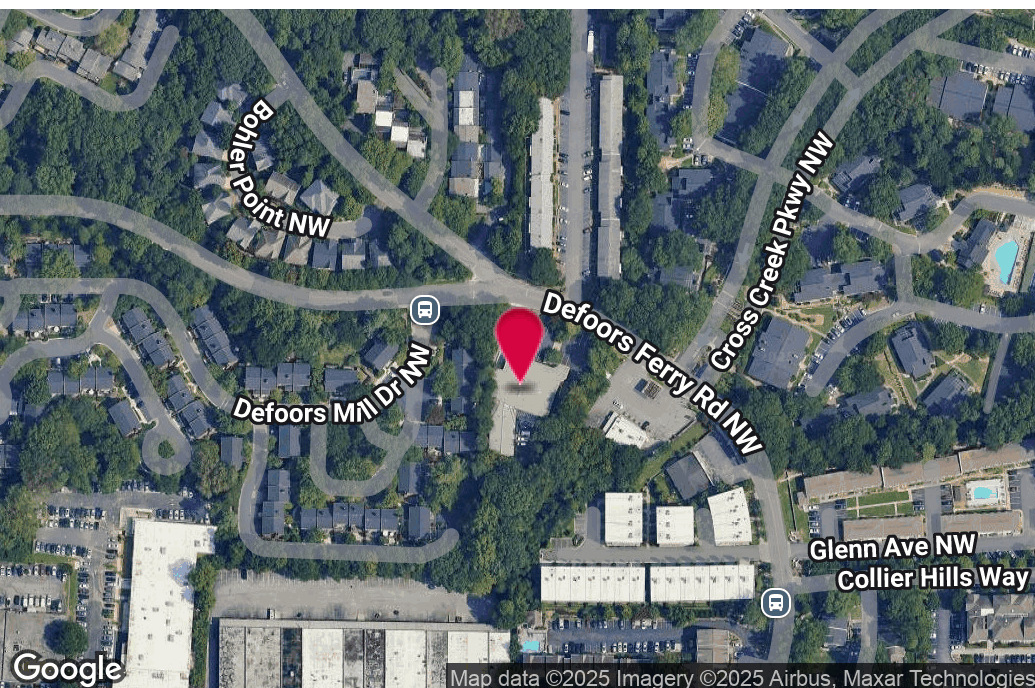
[wcovington@kingindustrial.com](mailto:wcovington@kingindustrial.com)



Industrial • Commercial • Investment  
404.942.2000 | [kingindustrial.com](http://kingindustrial.com)

Defoors Ferry Road Northwest

FOR SALE/LEASE  
12,000± SF



## PROPERTY HIGHLIGHTS

- 100% HVAC
- Full Kitchen
- Training Room
- Glassed in Garden Space/Break Area
- 30 Parking Spaces in Front
- 1 Dock High Door
- Fenced Outside Storage

## OFFERING SUMMARY

Lot Size:	0.77 Acres
Zoning:	C-1

### ED SMITH, CCIM

Vice President

404.942.2082

esmith@kingindustrial.com

### WILSON COVINGTON, SIOR

Senior Vice President

404.942.2073

wcovington@kingindustrial.com

*Every effort has been made to provide accurate information, but no liability is assumed for errors or omissions.*



Industrial • Commercial • Investment  
404.942.2000 | kingindustrial.com

# ADDITIONAL PHOTOS



## ED SMITH, CCIM

Vice President

404.942.2082

esmith@kingindustrial.com

## WILSON COVINGTON, SIOR

Senior Vice President

404.942.2073

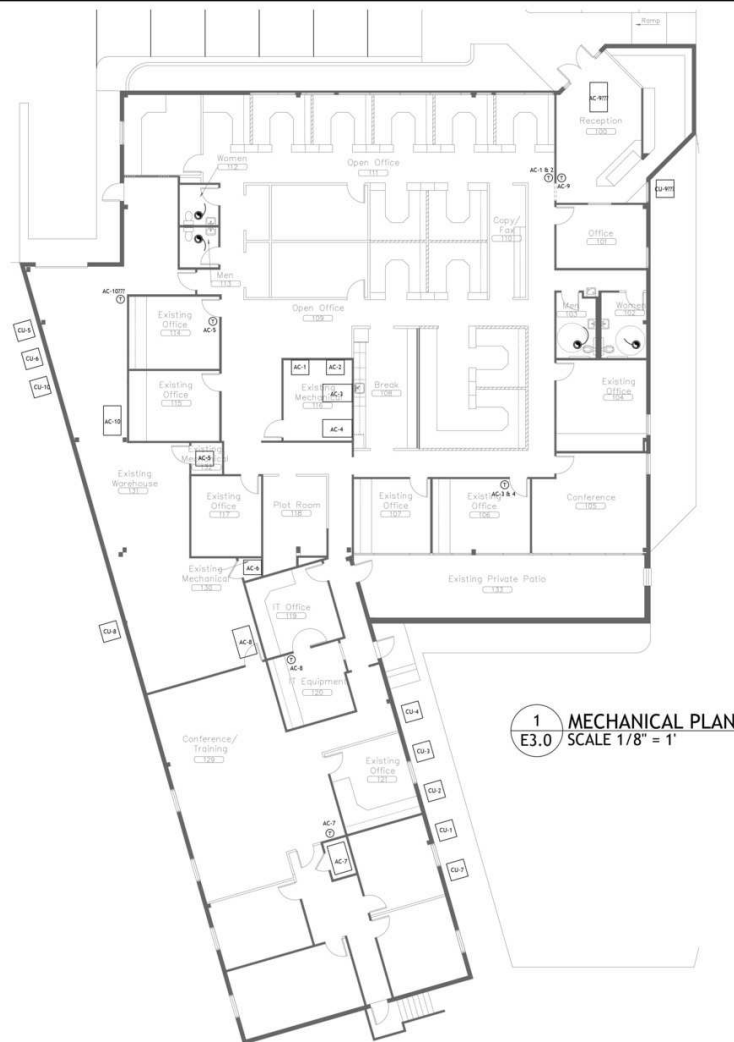
wcovington@kingindustrial.com

Every effort has been made to provide accurate information, but no liability is assumed for errors or omissions.

**king** Industrial  
Realty, Inc. **CORFAC**  
INTERNATIONAL

Industrial • Commercial • Investment  
404.942.2000 | kingindustrial.com

# FLOOR PLAN



Mayberry Electric, Inc.

634 ANTONE ST.  
ATLANTA, GA 30318

T. 404-799-3334  
F. 404-799-3336  
[www.mayberryelectric.com](http://www.mayberryelectric.com)

PROJECT INFORMATION	
Project Name:	...
Project Number:	...
Project Manager:	...
Project Start Date:	...
Project End Date:	...
Project Status:	...
Project Location:	...
Project Budget:	...
Project Risk:	...
Project Complexity:	...
Project Scope:	...
Project Deliverables:	...
Project Stakeholders:	...
Project Sponsor:	...
Project Steering Committee:	...
Project Governance:	...
Project Communication:	...
Project Reporting:	...
Project Documentation:	...
Project Change Management:	...
Project Risk Management:	...
Project Quality Management:	...
Project Resource Management:	...
Project Procurement Management:	...
Project Stakeholder Management:	...
Project Integration Management:	...
Project Planning Management:	...
Project Execution Management:	...
Project Monitoring and Control Management:	...
Project Closing Management:	...

**MAYBERRY ELECTRIC, INC**  
2126 DEFOORS FERRY ROAD, ATLANTA, GA 30318

NUMBER	REVISION/ISSUE	DATE

PROJECT NUMBER:

PROJECT MANAGER

NAME (ST) **AP**

100

MEC

100

12/22/

---

1

1

# II

1

1

**ED SMITH, CCIM**

*Vice President*

404.942.2082

esmith@kingindustrial.com

**WILSON COVINGTON, SIOR**

*Senior Vice President*

404.942.2073

wcovington@kingindustrial.com

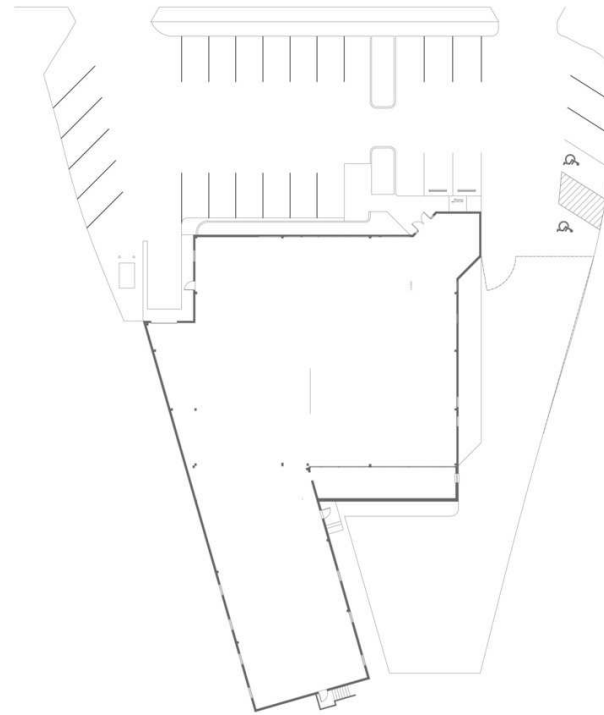
*Every effort has been made to provide accurate information, but no liability is assumed for errors or omissions.*

**King** Industrial Realty, Inc.



Industrial • Commercial • Investment  
404.942.2000 | kingindustrial.com

# SITE PLAN



1 TOTAL SITE PLAN  
E4.0 SCALE 1/16" = 1'



Mayberry Electric, Inc.  
634 ANTONE ST.  
ATLANTA, GA 30318  
T. 404-799-3334  
F. 404-799-3336  
www.mayberryelectric.com

## PROJECT INFORMATION

MAYBERRY ELECTRIC, INC  
2126 DEFOORS FERRY ROAD, ATLANTA, GA 30318

NUMBER	REVISION/DATE	DATE

PROJECT NUMBER:  
PROJECT NAME:  
DRAWN BY: APW  
SHEET TITLE:

TOTAL SITE PLAN

DATE: 12/22/25 SCALE: AS NOTED  
SHEET NUMBER

E4.0

**ED SMITH, CCIM**

Vice President

404.942.2082

esmith@kingindustrial.com

**WILSON COVINGTON, SIOR**

Senior Vice President

404.942.2073

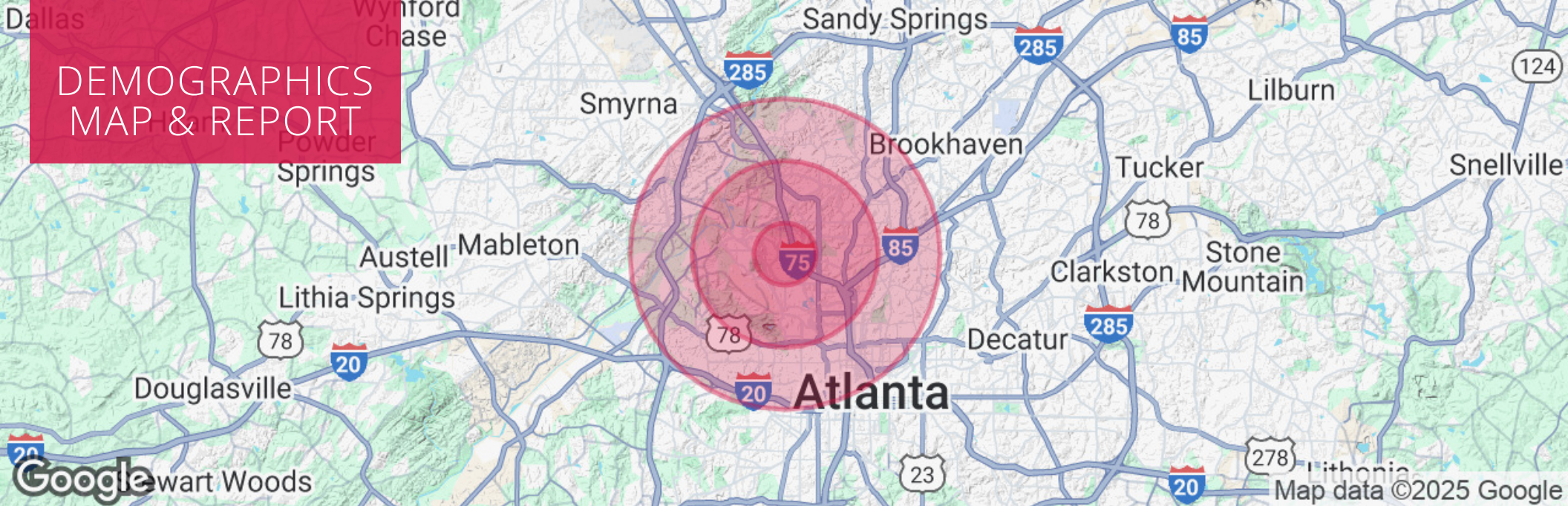
wcovington@kingindustrial.com

Every effort has been made to provide accurate information, but no liability is assumed for errors or omissions.



Industrial • Commercial • Investment  
404.942.2000 | kingindustrial.com

# DEMOGRAPHICS MAP & REPORT



## POPULATION

	1 MILE	3 MILES	5 MILES
Total Population	13,743	99,002	325,261
Average Age	35	37	38
Average Age (Male)	35	37	38
Average Age (Female)	36	37	38

## HOUSEHOLDS & INCOME

	1 MILE	3 MILES	5 MILES
Total Households	6,936	47,891	163,152
# of Persons per HH	2	2.1	2
Average HH Income	\$180,795	\$167,012	\$147,161
Average House Value	\$614,091	\$772,467	\$700,801

### ED SMITH, CCIM

Vice President

404.942.2082

esmith@kingindustrial.com

### WILSON COVINGTON, SIOR

Senior Vice President

404.942.2073

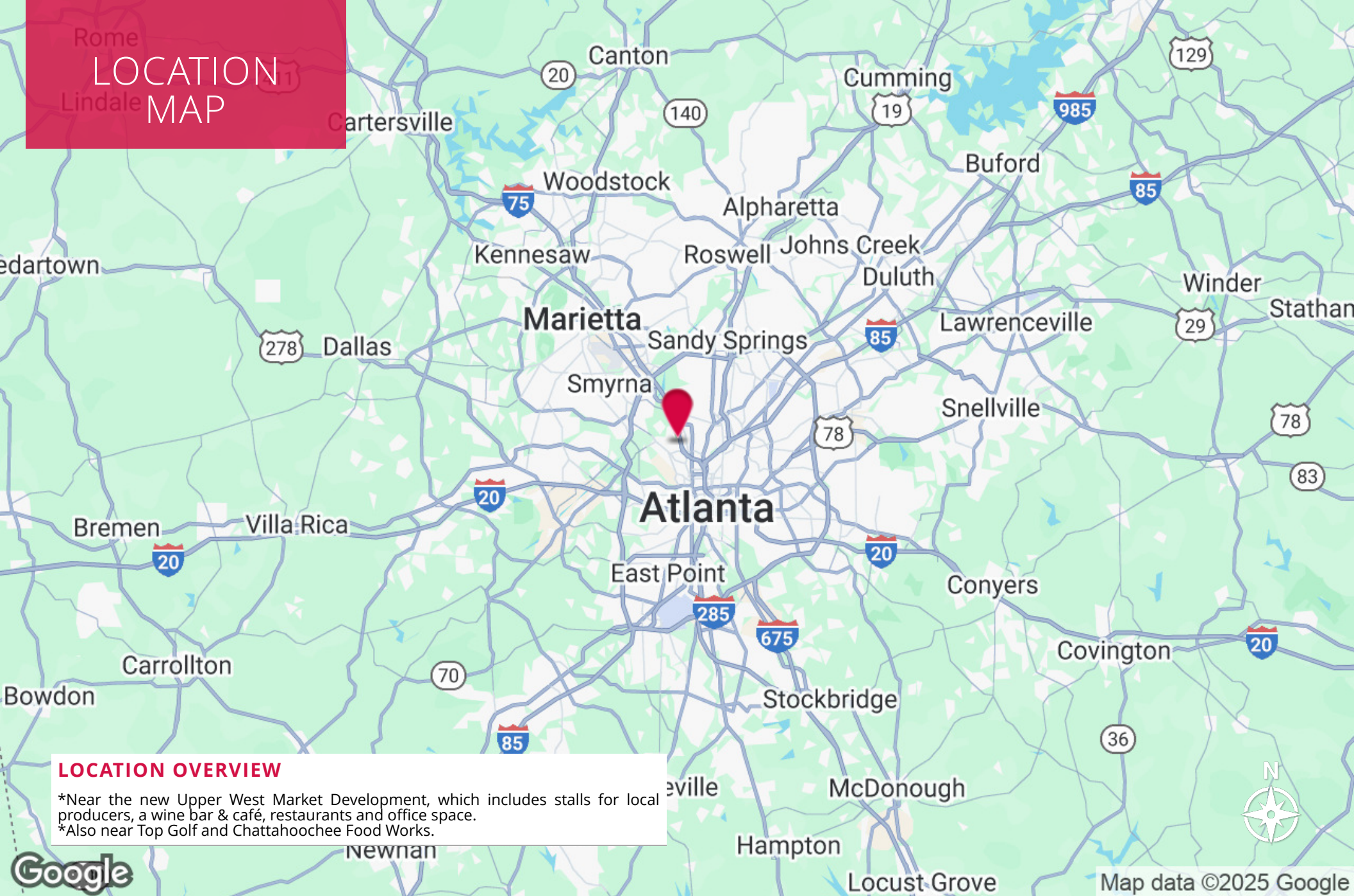
wcovington@kingindustrial.com



Industrial • Commercial • Investment  
404.942.2000 | kingindustrial.com

Rome  
Lindale

# LOCATION MAP



## LOCATION OVERVIEW

\*Near the new Upper West Market Development, which includes stalls for local producers, a wine bar & café, restaurants and office space.

\*Also near Top Golf and Chattahoochee Food Works.

### ED SMITH, CCIM

Vice President

404.942.2082

esmith@kingindustrial.com

### WILSON COVINGTON, SIOR

Senior Vice President

404.942.2073

wcovington@kingindustrial.com

**king**  
Industrial  
Realty, Inc.

**CORFAC**  
INTERNATIONAL

Industrial • Commercial • Investment  
404.942.2000 | kingindustrial.com



EXCLUSIVELY LISTED BY:

**ED SMITH, CCIM**

*Vice President*  
esmith@kingindustrial.com  
404.942.2082

**WILSON COVINGTON, SIOR**

*Senior Vice President*  
wcovington@kingindustrial.com  
404.942.2073

Defoors Ferry Road Northwest

**King** Industrial  
Realty, Inc.

Industrial • Commercial • Investment  
404.942.2000 | kingindustrial.com