

OFFICE SUITES FOR LEASE



PACIFIC STATION

687 South Coast Highway 101 - Encinitas, CA 92024

PROPERTY DETAILS

- 1,517 - 2,278 SF office suites available
- Located in the heart of downtown Encinitas
- Walking distance from Encinitas Coaster Station
- Close proximity to various restaurants & retail shops
- 0.5 mile walk to the ocean & just 3 blocks west from I-5
- Secured, underground parking
- **LEASE RATE: \$6.50/SF Gross**



For more info contact: Whitney Robinson | whitney@rafpg.com | (858) 314-3116



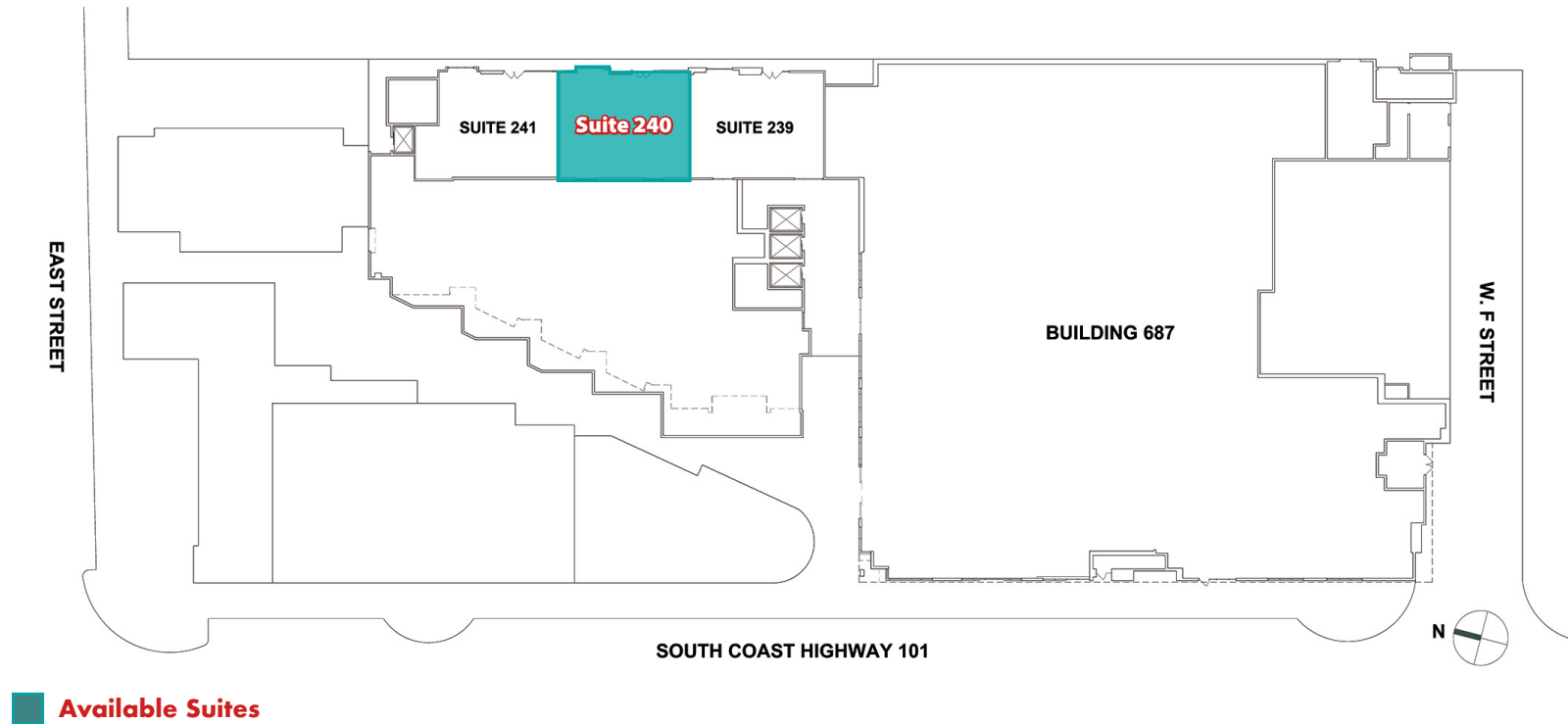
1,517 - 2,278 SF OFFICE SPACE FOR LEASE

687 S. Coast Hwy 101 - Encinitas, CA 92024

AVAILABILITY CHART

Address	Suite	SF	Base Rent	Availability
687 S. Coast Highway	240	1,517 SF	\$6.50/SF Gross	6/1/2026
687 S. Coast Highway	310	2,278 SF	\$6.50/SF Gross	8/1/2026

Site Plan - 1st Floor



For more info contact: Whitney Robinson | whitney@rafpg.com | (858) 314-3116

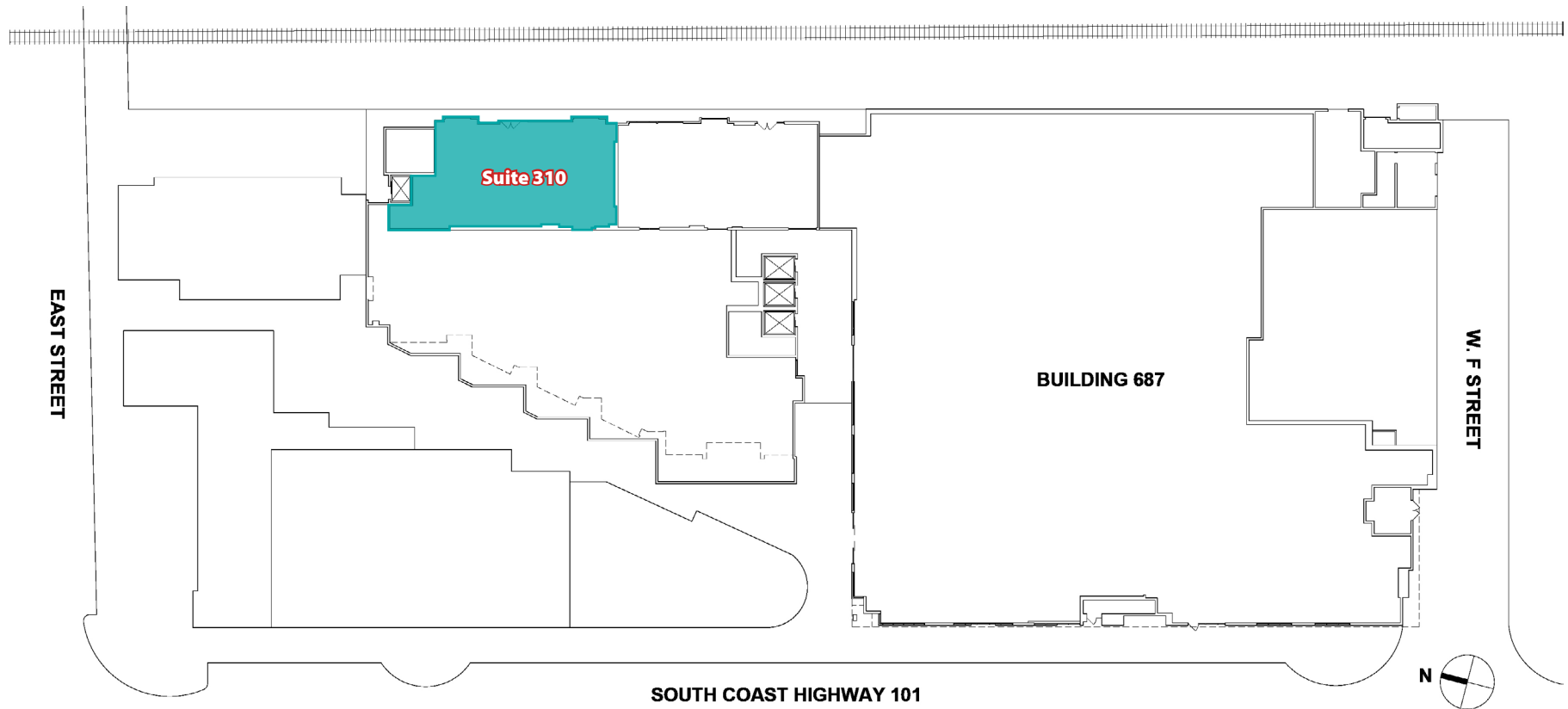
No warranty or representation is made to the accuracy of the foregoing information. Terms of sale or lease and availability are subject to change or withdrawal without notice. Any of the foregoing information will need to be separately verified by the buyer or tenant.



1,517 - 2,278 SF OFFICE SPACE FOR LEASE

687 S. Coast Hwy 101 - Encinitas, CA 92024

Site Plan - 2nd Floor



 Available Suites

For more info contact: Whitney Robinson | whitney@rafpg.com | (858) 314-3116

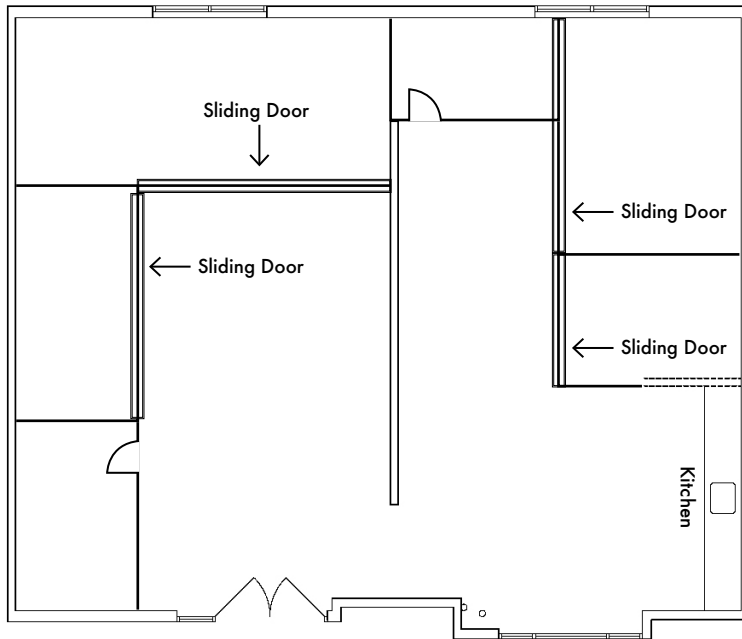
No warranty or representation is made to the accuracy of the foregoing information. Terms of sale or lease and availability are subject to change or withdrawal without notice. Any of the foregoing information will need to be separately verified by the buyer or tenant.



1,517 - 2,278 SF OFFICE SPACE FOR LEASE

687 S. Coast Hwy 101 - Encinitas, CA 92024

FLOOR PLAN
Suite 240



SUITE DESCRIPTION

Building Address: 687 S. Coast Hwy

Suite: 240

Square Feet: 1,517 SF

Lease Rate: \$6.50/SF Gross

Comments: Office space available

Availability: 6/1/2026

For more info contact: Whitney Robinson | whitney@rafpg.com | (858) 314-3116

No warranty or representation is made to the accuracy of the foregoing information. Terms of sale or lease and availability are subject to change or withdrawal without notice. Any of the foregoing information will need to be separately verified by the buyer or tenant.



1,517 - 2,278 SF OFFICE SPACE FOR LEASE

687 S. Coast Hwy 101 - Encinitas, CA 92024

Suite 240 - Interior Photos



For more info contact: Whitney Robinson | whitney@rafpg.com | (858) 314-3116

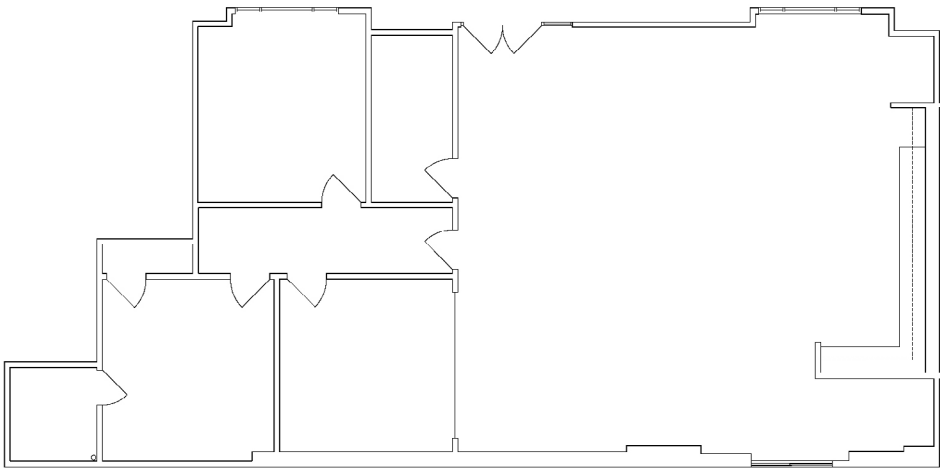
No warranty or representation is made to the accuracy of the foregoing information. Terms of sale or lease and availability are subject to change or withdrawal without notice. Any of the foregoing information will need to be separately verified by the buyer or tenant.



1,517 - 2,278 SF OFFICE SPACE FOR LEASE

687 S. Coast Hwy 101 - Encinitas, CA 92024

FLOOR PLAN
Suite 310



SUITE DESCRIPTION

Building Address:	687 S. Coast Hwy
Suite:	310
Square Feet:	2,278 SF
Lease Rate:	\$6.50/SF Gross
Comments:	Office space available
Availability:	8/1/2026

For more info contact: Whitney Robinson | whitney@rafpg.com | (858) 314-3116

No warranty or representation is made to the accuracy of the foregoing information. Terms of sale or lease and availability are subject to change or withdrawal without notice. Any of the foregoing information will need to be separately verified by the buyer or tenant.



1,517 - 2,278 SF OFFICE SPACE FOR LEASE

687 S. Coast Hwy 101 - Encinitas, CA 92024

AERIAL MAP



For more info contact: Whitney Robinson | whitney@rafpg.com | (858) 314-3116

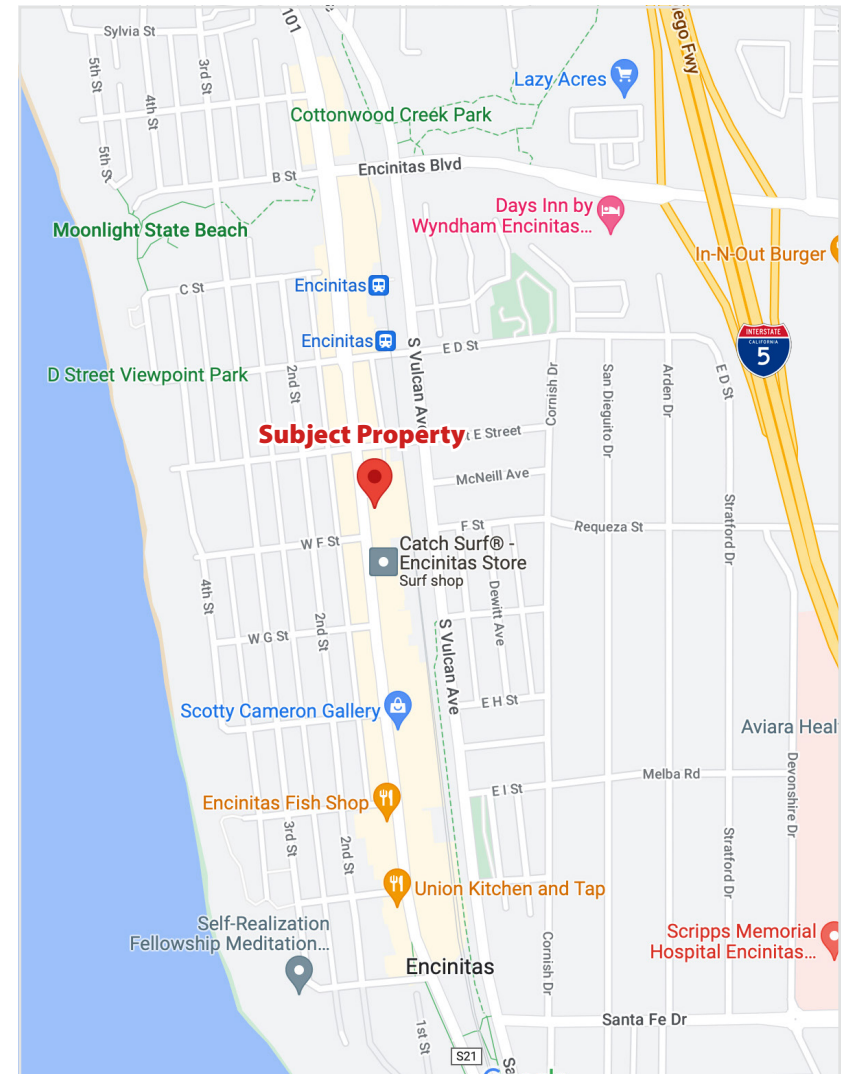
No warranty or representation is made to the accuracy of the foregoing information. Terms of sale or lease and availability are subject to change or withdrawal without notice. Any of the foregoing information will need to be separately verified by the buyer or tenant.



1,517 - 2,278 SF OFFICE SPACE FOR LEASE

687 S. Coast Hwy 101 - Encinitas, CA 92024

AERIAL MAP



For more info contact: Whitney Robinson | whitney@rafpg.com | (858) 314-3116

No warranty or representation is made to the accuracy of the foregoing information. Terms of sale or lease and availability are subject to change or withdrawal without notice. Any of the foregoing information will need to be separately verified by the buyer or tenant.