

J.R. Parrish Inc.
COMMERCIAL REAL ESTATE

jrparrish.com

MAIN OFFICE
831.476.2222
FAX
831.464.5818

9000 Soquel Ave
Suite 200
Santa Cruz, CA 95062

FOR MORE INFORMATION
CONTACT EXCLUSIVE
LISTING AGENT

Carol Lezin
831.247.2610 cell
clezin@jrparrish.com
DRE# 00878937

FOR LEASE

STREET RETAIL/OFFICE-NEW CONSTRUCTION



350 OCEAN STREET • SANTA CRUZ, CA

OFFERED FOR \$TBD + NNNS

- Unique Retail/Office opportunity for busy Ocean Street corridor
- Onsite garage parking
- 3 units varying sizes all with full bathrooms
- High Traffic count
- New construction
- Tenant Improvements available for qualified tenants

Located on highly trafficked Ocean Street, the main corridor to Santa Cruz beaches and the Santa Cruz Beach Boardwalk Amusement Park. Ground floor of new housing development. Cold shell condition: an opportunity to build out your own vision.

Three suites available:

- 825 square feet
- 924 square feet
- 3,063 square feet

FLOORPLAN

jrparrish.com

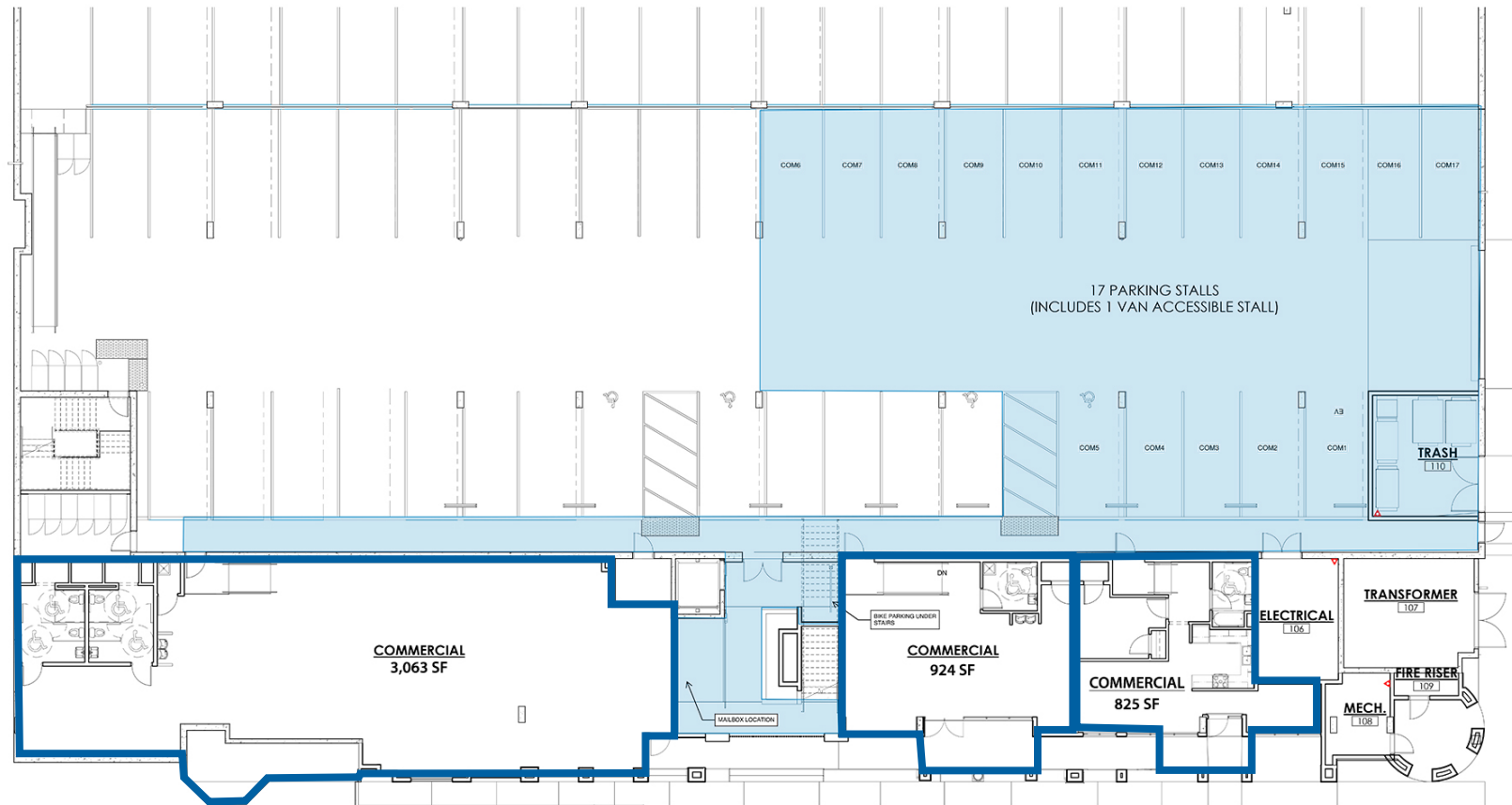
MAIN OFFICE
831.476.2222

FAX
831.464.5818

9000 Soquel Ave
Suite 200
Santa Cruz, CA 95062

FOR MORE INFORMATION
CONTACT EXCLUSIVE
LISTING AGENT

Carol Lezin
831.247.2610 cell
clezin@jrparrish.com
DRE# 00878937



J.R. Parrish Inc.
COMMERCIAL REAL ESTATE

jrparish.com

MAIN OFFICE
831.476.2222

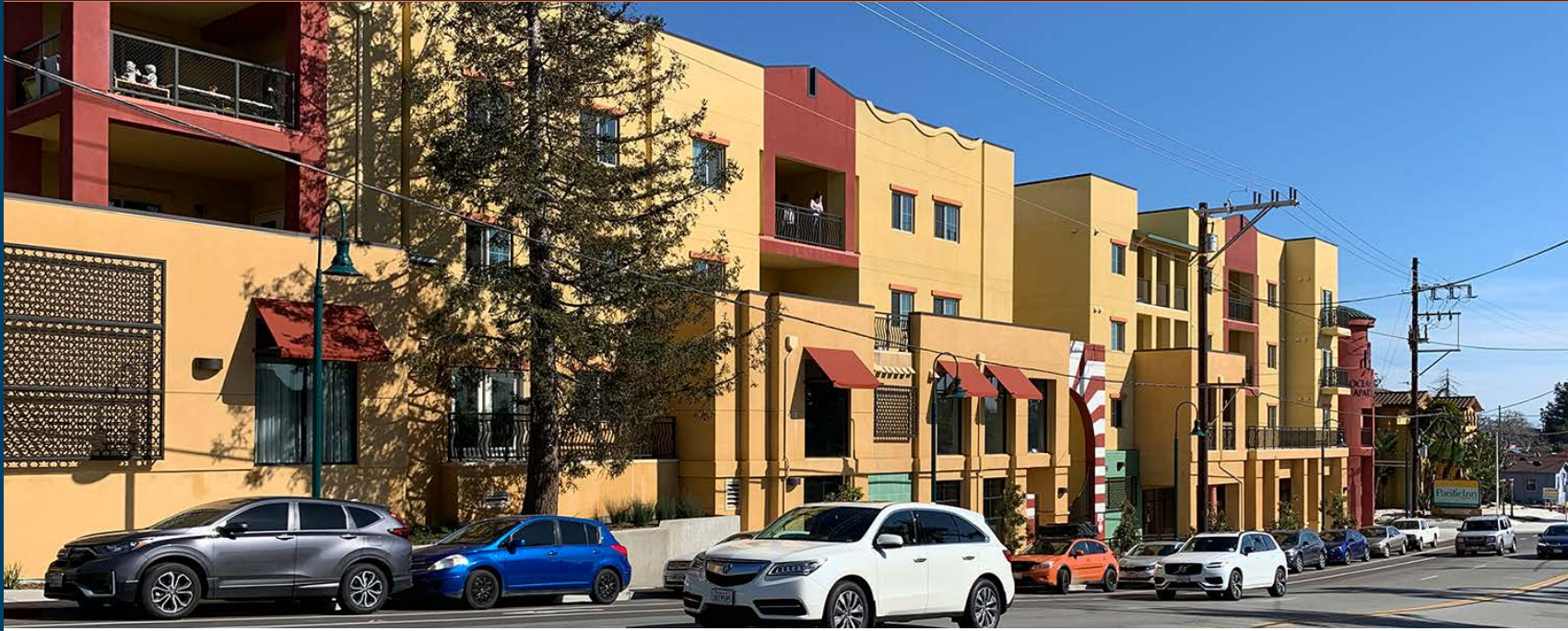
FAX
831.464.5818

9000 Soquel Ave
Suite 200
Santa Cruz, CA 95062

FOR MORE INFORMATION
CONTACT EXCLUSIVE
LISTING AGENT

Carol Lezin
831.247.2610 cell
clezin@jrparish.com
DRE# 00878937

PHOTOS



nearby Beach and Boardwalk



JR PARRISH COMMERCIAL REAL ESTATE • jrparish.com



COMMERCIAL REAL ESTATE

jrparrish.com

MAIN OFFICE
831.476.2222
FAX
831.464.5818

9000 Soquel Ave
Suite 200
Santa Cruz, CA 95062

FOR MORE INFORMATION
CONTACT EXCLUSIVE
LISTING AGENT

Carol Lezin
831.247.2610 cell
clezin@jrparrish.com
DRE# 00878937

AERIAL PHOTO

