

COMMERCIAL SPACE FOR RENT

- ▶ ±2,070 SF second level space available for lease
- ▶ Open floor plan with employee lounge and glass partitioned conference room
- ▶ Ideal location in the heart of Downtown Greenville's Historic West End
- ▶ Zoning: MXS-D/City of Greenville
- ▶ \$22.00/SF Base Rent
- ▶ \$1.54/SF Additional Rent (Water, Taxes, Insurance)

FOR ADDITIONAL INFORMATION:

Earle Furman, SIOR
efurman@naief.com
O: 864 232 9040

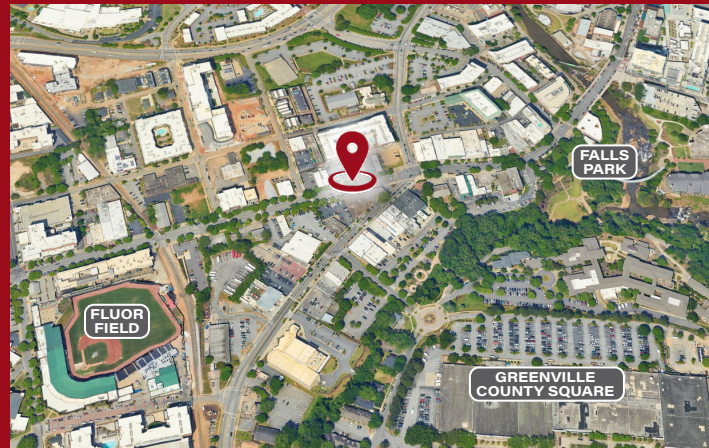
Keith Jones, CCIM, SIOR
keith@naief.com
O: 864 232 9040

McNeil Epps, CCIM, SIOR
mepps@naief.com
O: 864 232 9040

Will Williamson
wwilliamson@naief.com
O: 864 436 6411



718-B S. Main Street



We obtained the information above from sources we believe to be reliable. However, we have not verified its accuracy and make no guarantee, warranty or representation about it. It is submitted subject to the possibility of errors, omissions, change of price, rental or other conditions, prior sale, lease or financing, or withdrawal without notice. We include projections, opinions, assumptions or estimates for example only, and they may not represent current or future performance of the property. You and your tax and legal advisors should conduct your own investigation of the property and transaction.

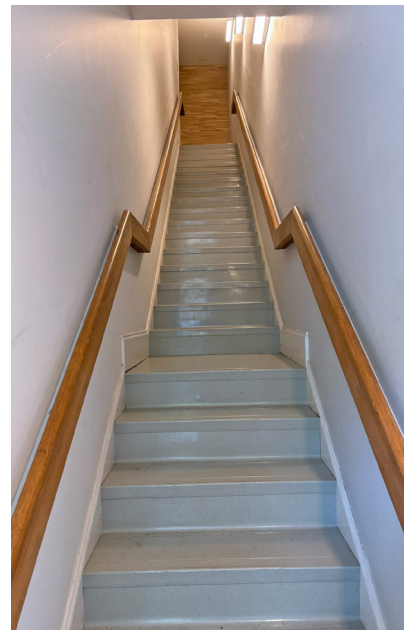
101 E. Washington Street
Suite 400
Greenville, SC 29601
864.232.9040 (Main)
www.naiearlefurman.com

NAI Earle Furman



GREENVILLE, SOUTH CAROLINA

718-B J. Main Street

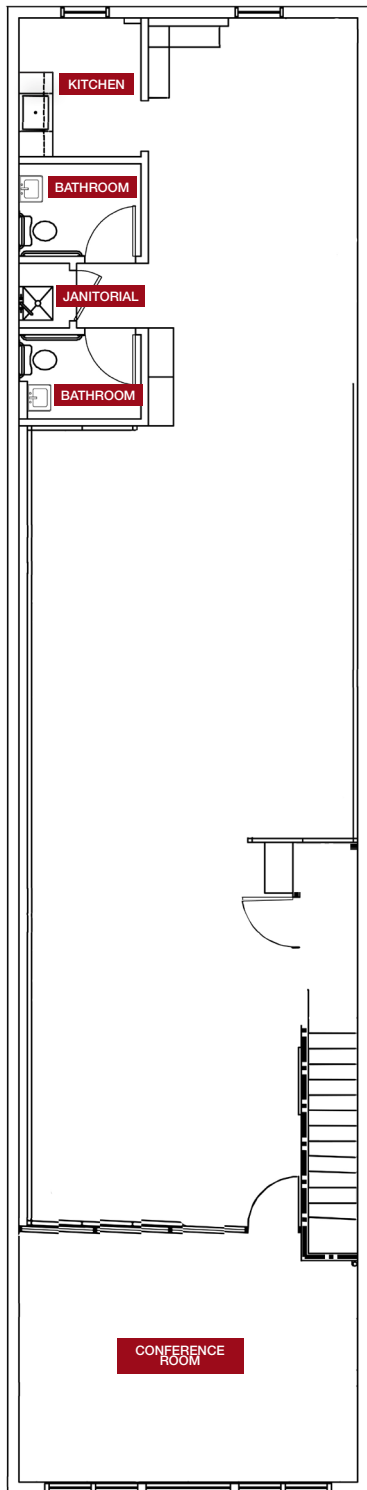


We obtained the information above from sources we believe to be reliable. However, we have not verified its accuracy and make no guarantee, warranty or representation about it. It is submitted subject to the possibility of errors, omissions, change of price, rental or other conditions, prior sale, lease or financing, or withdrawal without notice. We include projections, opinions, assumptions or estimates for example only, and they may not represent current or future performance of the property. You and your tax and legal advisors should conduct your own investigation of the property and transaction.

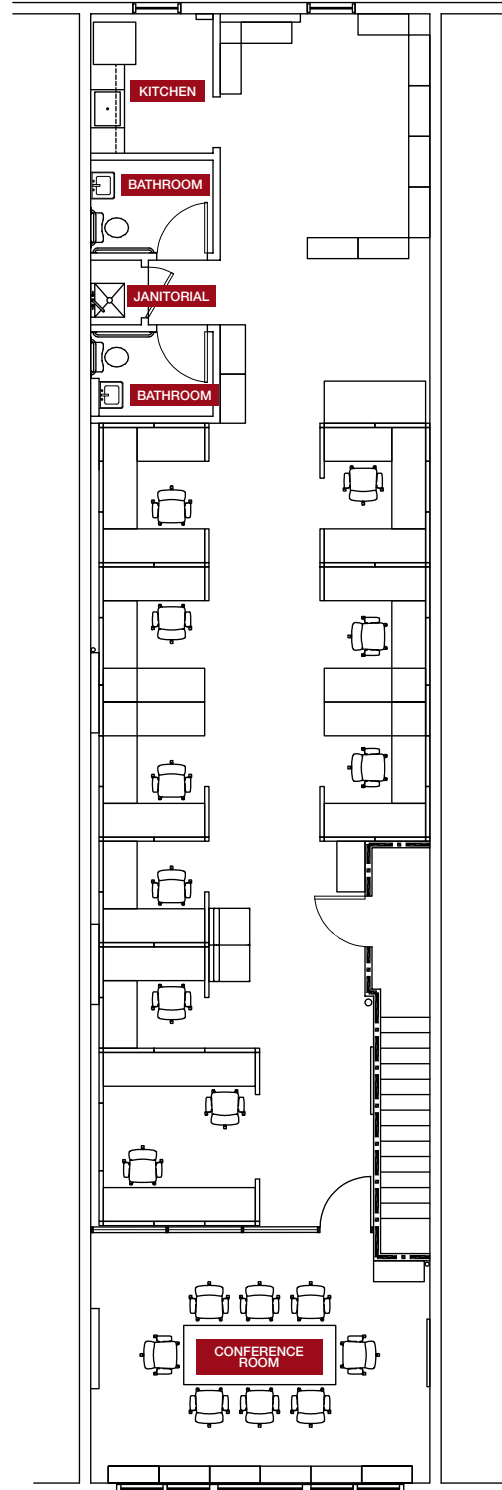
101 E. Washington Street
Suite 400
Greenville, SC 29601
864.232.9040 (Main)
www.naiearlefurman.com



VACANT LAYOUT



CONCEPTUAL FURNISHED LAYOUT



The floor plan is provided to give an indication of the layout and is for illustrative puposes only.

We obtained the information above from sources we believe to be reliable. However, we have not verified its accuracy and make no guarantee, warranty or representation about it. It is submitted subject to the possibility of errors, omissions, change of price, rental or other conditions, prior sale, lease or financing, or withdrawal without notice. We include projections, opinions, assumptions or estimates for example only, and they may not represent current or future performance of the property. You and your tax and legal advisors should conduct your own investigation of the property and transaction.

101 E. Washington Street
Suite 400
Greenville, SC 29601
864.232.9040 (Main)
www.naiearlefurman.com