



SUBLEASE OPPORTUNITY

10330 OLD OLIVE STREET ROAD

CREVE COEUR, MO 63141

H I L A N D
C O M M E R C I A L



Your Name Here

FOR SUBLEASE

Up to 25,000 SF available

- 1st floor 14,000 SF
- 2nd floor 11,000 SF

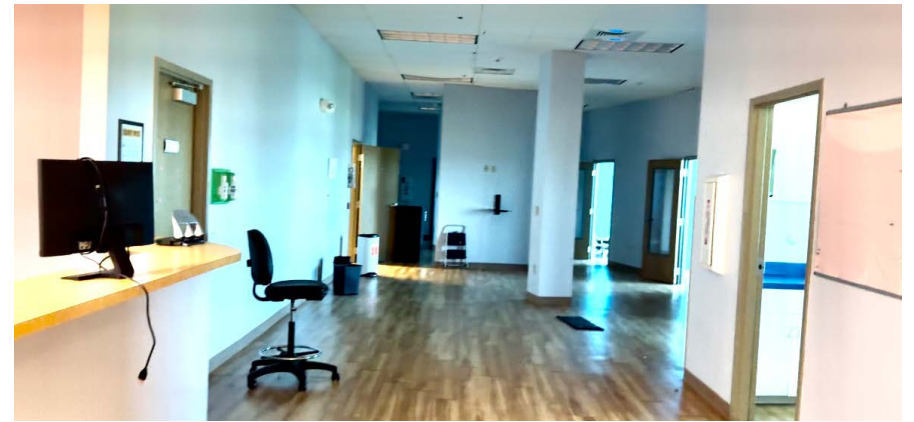
CONTACT INFORMATION

PAM HINDS

314.802.6226 x2

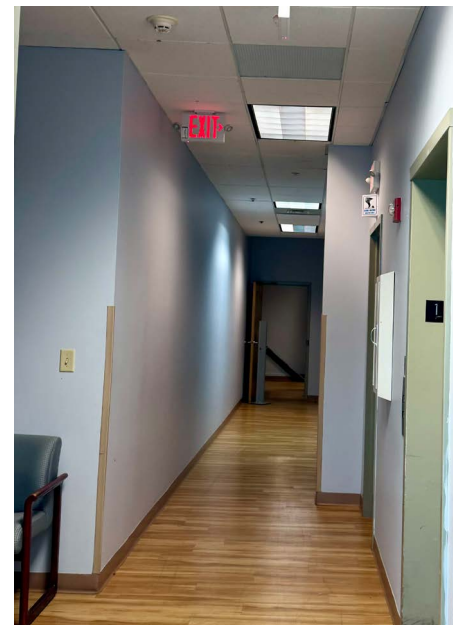
phinds@hilandcommercial.com

HILAND
COMMERCIAL

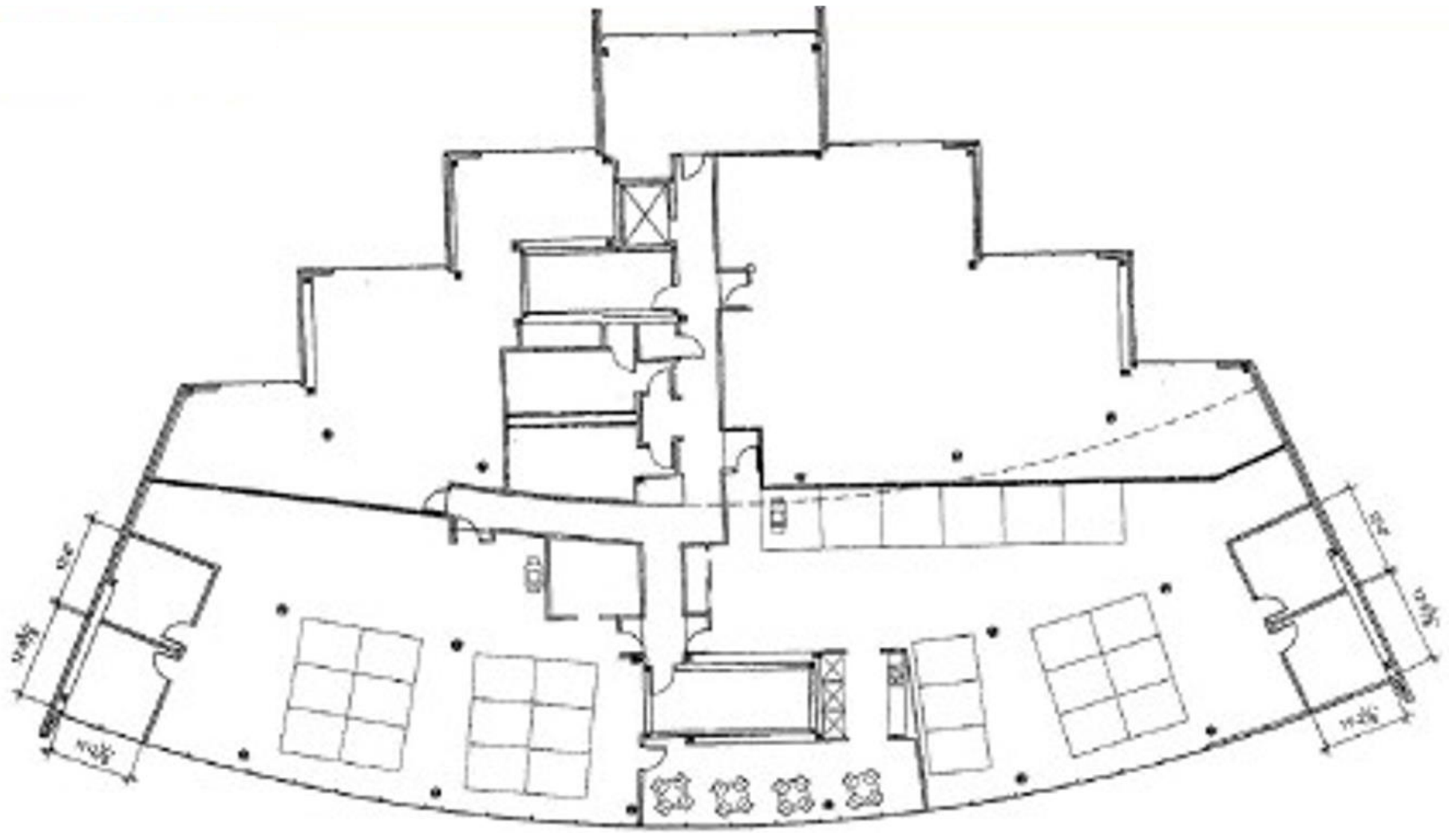


PROPERTY HIGHLIGHTS

- Northwest corner of Olive & Lindbergh
- Up to 25,000 sf available
 - 1st floor 14,000 sf
 - 2nd floor 11,000 sf
- Modern architecture with ceiling to floor windows
- Available for sublease immediately
- 9 ½' to 11' ceiling heights
- Free garage and surface parking
- Prominent building signage available
- Sublease Rate: \$14.00 PSF, Modified Gross



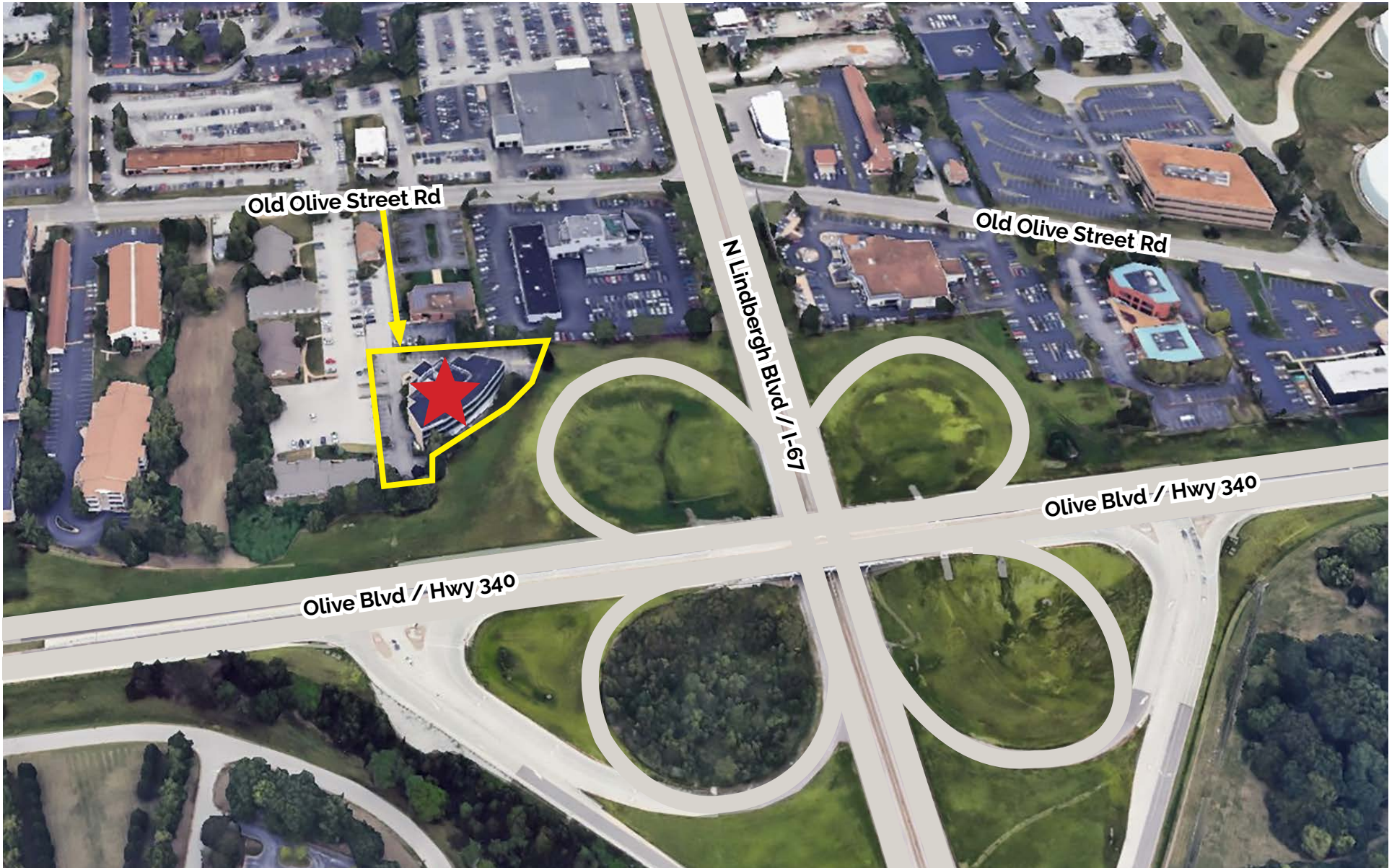
FLOOR PLAN - FIRST FLOOR



FLOOR PLAN - SECOND FLOOR



AERIAL



Old Olive Street Rd

Old Olive Street Rd

N Lindbergh Blvd / I-67

Olive Blvd / Hwy 340

Olive Blvd / Hwy 340

CREVE COEUR, MO

Creve Coeur is a premier community and established trade area, recognized as a key node for technology, life and bio sciences, and medical services.

