

Medical | For Lease

CBRE

624 Voris Jost Dr

Class A Dialysis Center

Waterloo, IL 62298
www.cbre.com/chicago



624 Voris Jost Dr
Waterloo, IL 62298

For Lease

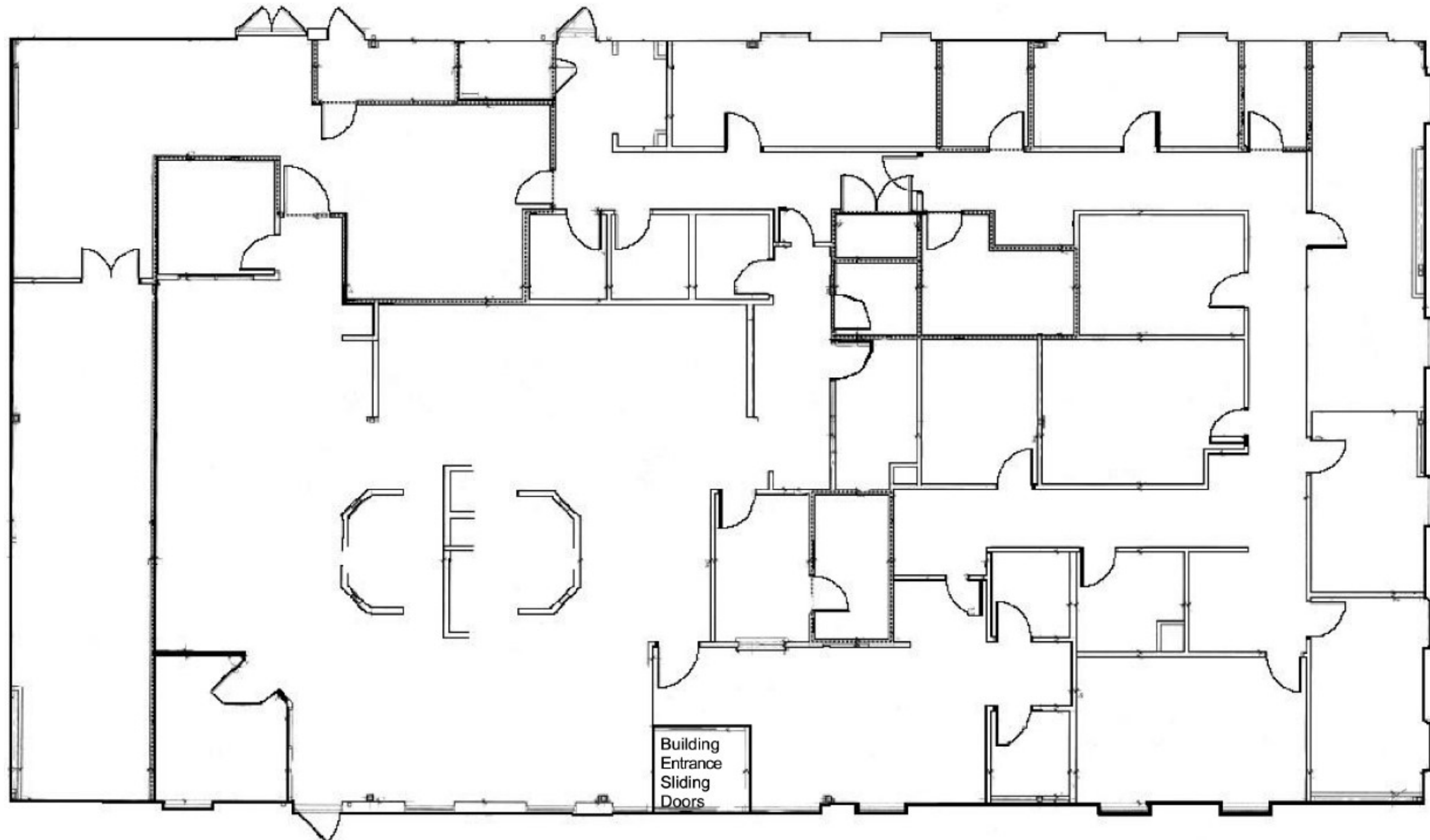
Property Highlights

- + 8,394 SF Available
- + Class A Dialysis Center
- + Ideal for a single tenant
- + Abundant onsite parking and covered patient drop-off
- + Convenient access to Hwy 3, IL-156, and I-255

CONTACT BROKER FOR PRICING



Floor Plan



Aerial Map

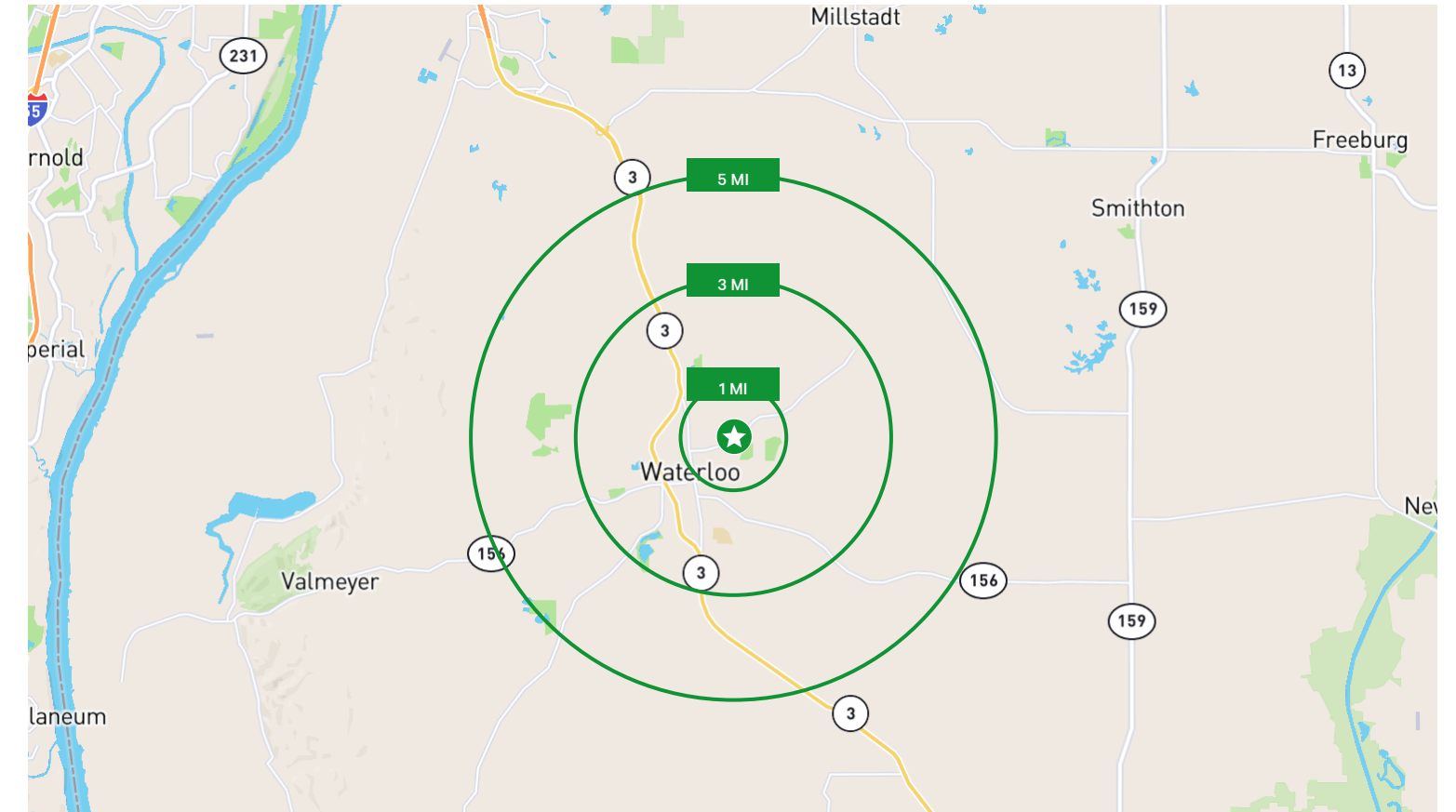


Contact Us

Kori Gibbons
Associate
+1 314 497 5128
Kori.Gibbons@cbre.com

© 2026 CBRE, Inc. All rights reserved. This information has been obtained from sources believed reliable, but has not been verified for accuracy or completeness. You should conduct a careful, independent investigation of the property and verify all information. Any reliance on this information is solely at your own risk. CBRE and the CBRE logo are service marks of CBRE, Inc. All other marks displayed on this document are the property of their respective owners, and the use of such logos does not imply any affiliation with or endorsement of CBRE. Photos herein are the property of their respective owners. Use of these images without the express written consent of the owner is prohibited. BSO_05.06.2026

Demographics



	1 Mile	3 Miles	5 Miles
Population	2,896	12,061	15,138
Average Household Income	\$109,103	\$106,280	\$110,990
Employees	913	3,199	3,642
Daytime Population	2,004	7,483	8,930
Households	1,226	5,026	6,230