

AVAILABLE

Turner Road Business Center

219 - 301 Turner Road, North Chesterfield, VA 23225



Exclusive Agent:

WILSON FLOHR, SIOR
(804) 521-1458
wilson@porterinc.com

BYRON HOLMES, CCIM, SIOR
(804) 521-1448
byron@porterinc.com

4801 Radford Avenue | P.O. Box 6482
Richmond, VA 23230
www.porterinc.com
804-353-7994

PORTER
R E A L T Y

CORFAC
INTERNATIONAL

SIOR

CCIM

FLEX UNITS AVAILABLE

- Units Available 2,250 SF to 6,750 Sf
- Unit 239: 2,250 SF; \$2,000 per month
- Unit 245-249: 6,750 SF; \$7,500 per month
- Unit 287: 3,750 SF; \$2,750 per month
- Flexible Month-to-Month Leasing Storage Available: Call Agents for Storage Pricing, Availability, and Details
- Opportunity Zone + Technology Zone Location
- Zoned C-4: Retail, Office, Flex Uses Allowed
- Roll-Up Doors 9' x 8'
- Curbside Loading (Drive-In Ramps Available)
- 15' - 17' Ceilings
- 208 Volt 3 Phase Electrical Service
- Immediate Access to Chippenham Parkway, Powhite Parkway, & Downtown Richmond
- Located Off Midlothian Turnpike (Rt 60)

This information has been prepared by Porter Realty Company, Inc. for marketing purposes only. No representation or warranty, expressed or implied, is made as to the accuracy of the foregoing information. Terms of sale or lease and availability are subject to change or withdrawal without notice.

AVAILABLE SPACES

219 - 301 Turner Road | North Chesterfield, VA 23225



LEASE INFORMATION

Lease Type: Modified Gross

Lease Term: Negotiable

Total Space: 2,250 - 6,750 SF

Lease Rate: Call for Information

AVAILABLE SPACES

- Building 4: 3 Units Available - 2,250 - 6,750 SF (Units 239, 243-249)
- Building 3: 1 Unit Available - 3,750 SF (Unit 287)

Wilson Flohr, SIOR
(804) 521-1458
wilson@porterinc.com

Byron Holmes, CCIM, SIOR
(804) 521-1448
byron@porterinc.com

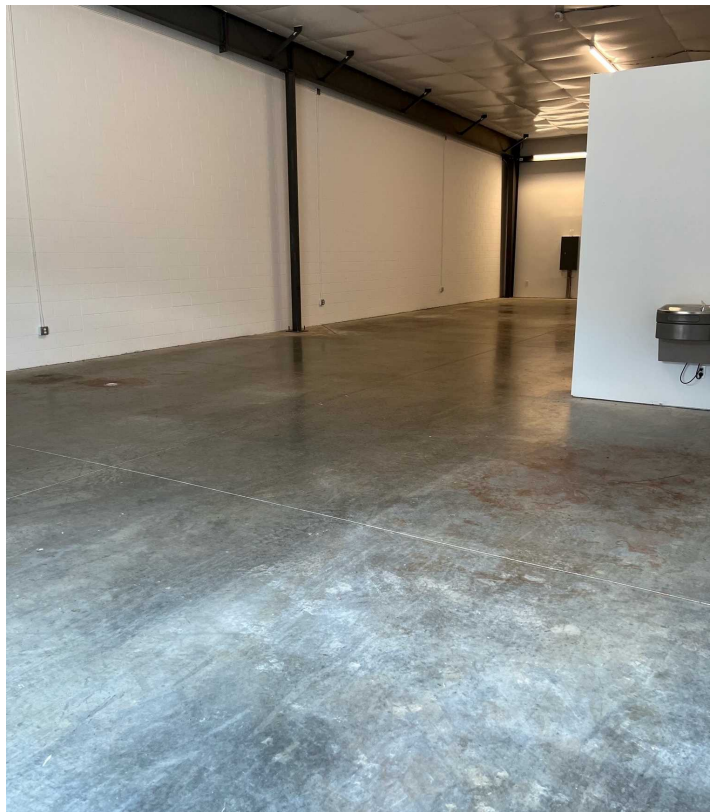
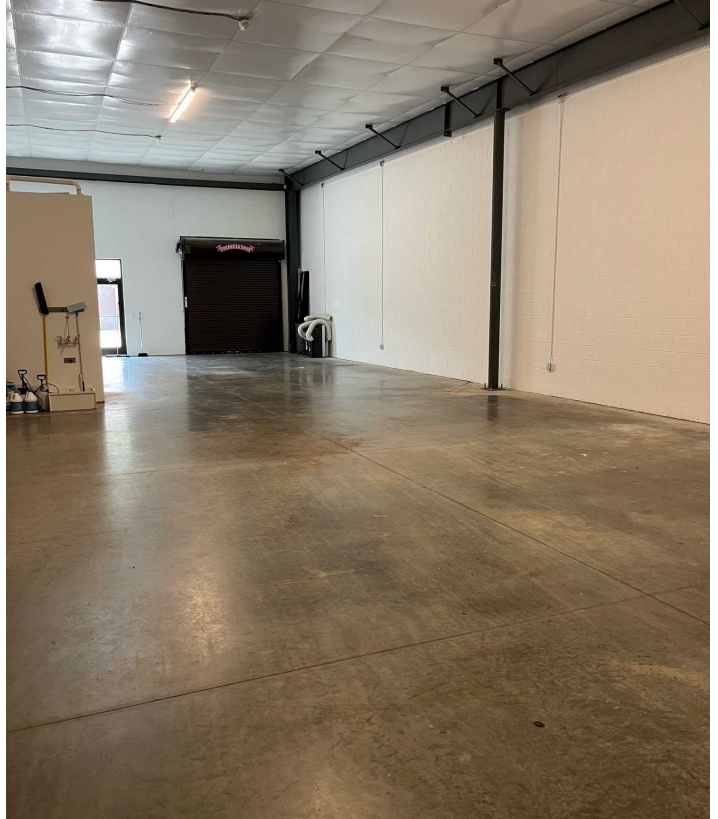


Porter Realty Company, Inc. | 4801 Radford Avenue | P.O. Box 6482 | Richmond, VA 23230 | www.porterinc.com

This information has been prepared by Porter Realty Company, Inc. for marketing purposes only. No representation or warranty, expressed or implied, is made as to the accuracy of the foregoing information. Terms of sale or lease and availability are subject to change or withdrawal without notice.

PROPERTY PHOTOS

219 - 301 Turner Road | North Chesterfield, VA 23225



Wilson Flohr, SIOR
(804) 521-1458
wilson@porterinc.com

Byron Holmes, CCIM, SIOR
(804) 521-1448
byron@porterinc.com

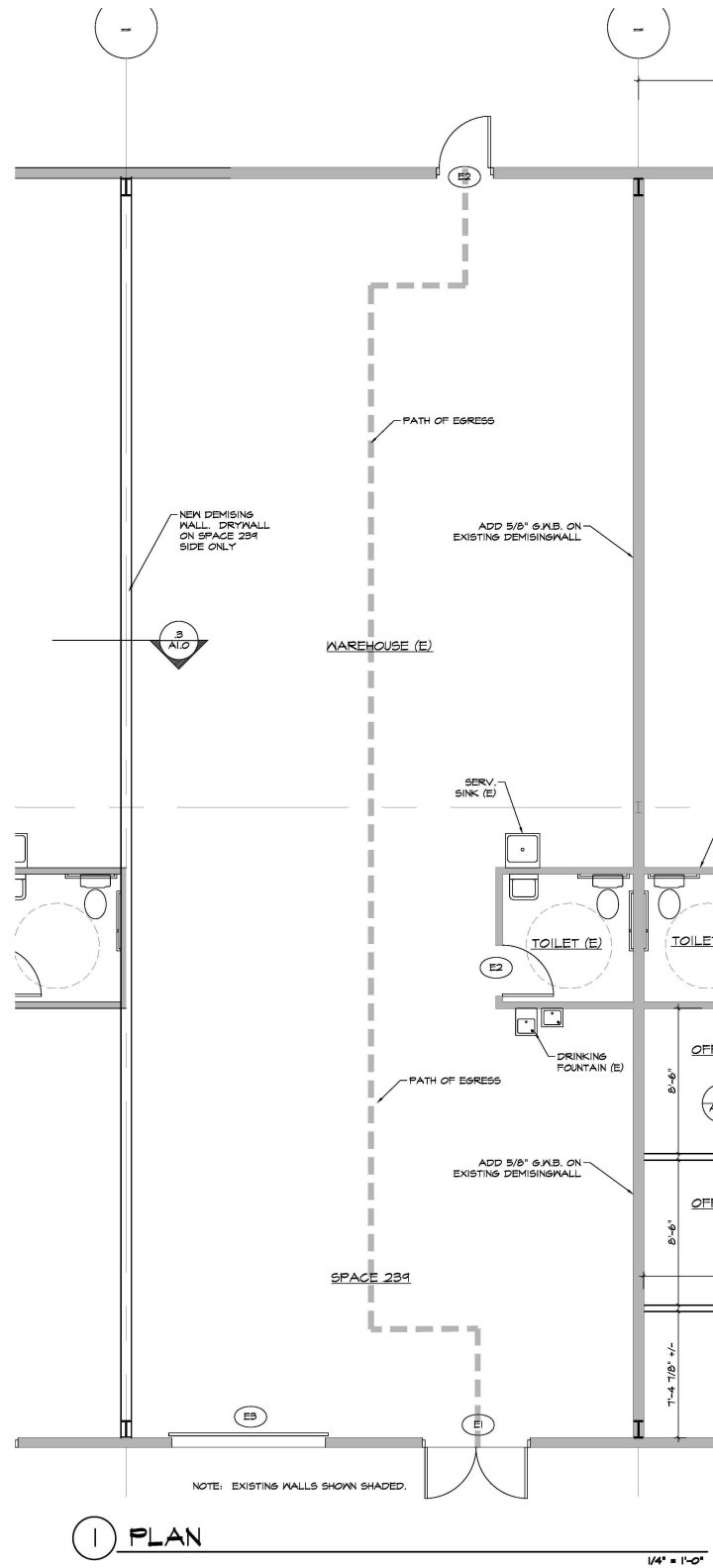


Porter Realty Company, Inc. | 4801 Radford Avenue | P.O. Box 6482 | Richmond, VA 23230 | www.porterinc.com

This information has been prepared by Porter Realty Company, Inc. for marketing purposes only. No representation or warranty, expressed or implied, is made as to the accuracy of the foregoing information. Terms of sale or lease and availability are subject to change or withdrawal without notice.

FLOOR PLAN - UNIT 239

219 - 301 Turner Road | North Chesterfield, VA 23225



Wilson Flohr, SIOR
(804) 521-1458
wilson@porterinc.com

Byron Holmes, CCIM, SIOR
(804) 521-1448
byron@porterinc.com

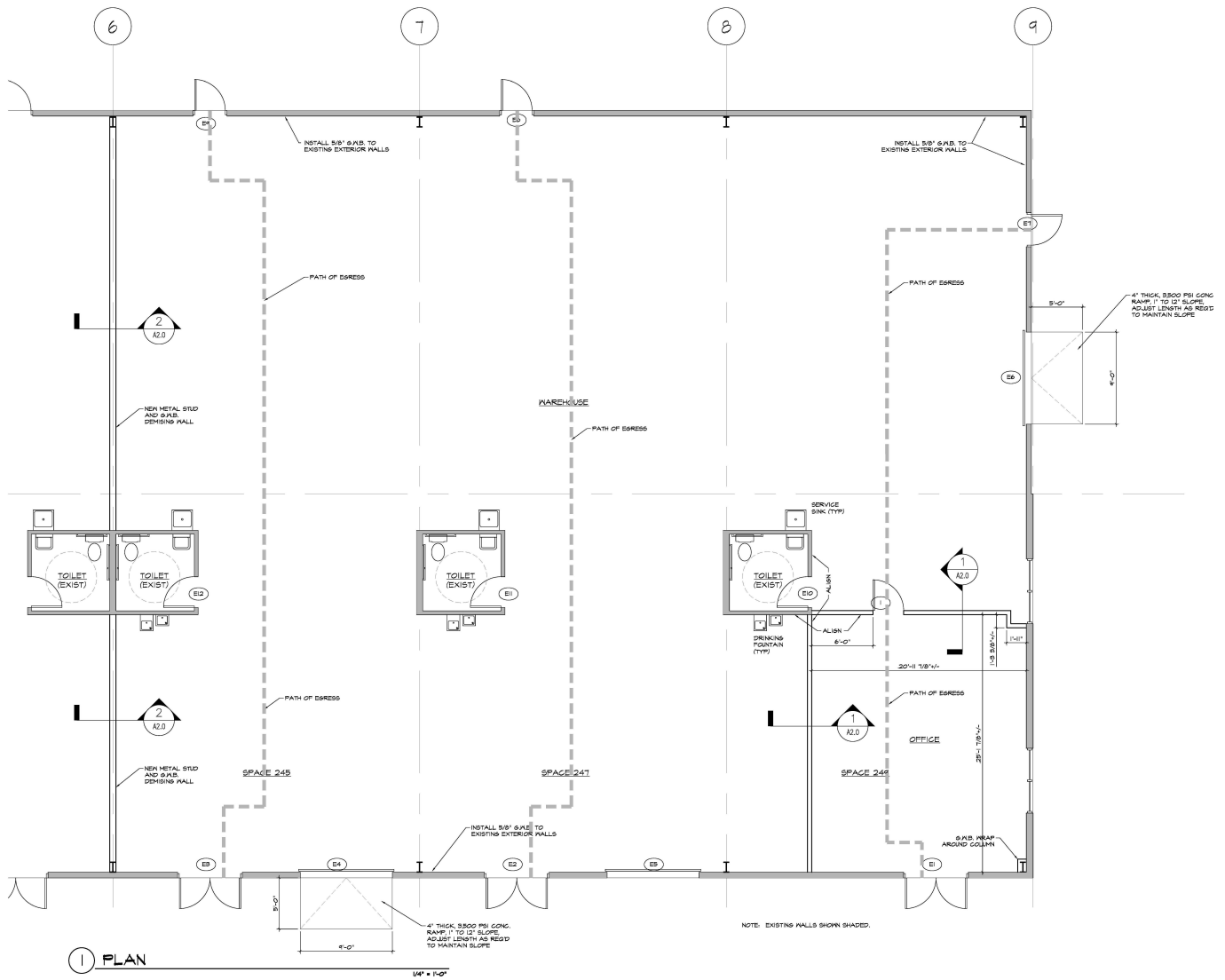


Porter Realty Company, Inc. | 4801 Radford Avenue | P.O. Box 6482 | Richmond, VA 23230 | www.porterinc.com

This information has been prepared by Porter Realty Company, Inc. for marketing purposes only. No representation or warranty, expressed or implied, is made as to the accuracy of the foregoing information. Terms of sale or lease and availability are subject to change or withdrawal without notice.

FLOOR PLAN - UNIT 245-249

219 - 301 Turner Road | North Chesterfield, VA 23225



FINISH SCHEDULE

ROOM	FLOOR	BASE	WALLS	CEILING	CL.B. HGT.	REMARK
OFFICE AREA	CARPET TILE	VNCL	PAINTED 6/8.B.	3/2' ACT	8'-0"	
TOILET (ALL 3)	VGT (EXIST)	VNCL	PAINTED 6/8.B.	PAINTED 6/8.B.	8'-0"	PAINT EXI
WAREHOUSE	CONCRETE	VNCL	PAINTED 6/8.B.	OPEN TO STRUCTURE		INSTALL 5 EXTERIOR

Wilson Flohr, SIOR
(804) 521-1458
wilson@porterinc.com

Byron Holmes, CCIM, SIOR
(804) 521-1448
byron@porterinc.com



Porter Realty Company, Inc. | 4801 Radford Avenue | P.O. Box 6482 | Richmond, VA 23230 | www.porterinc.com

This information has been prepared by Porter Realty Company, Inc. for marketing purposes only. No representation or warranty, expressed or implied, is made as to the accuracy of the foregoing information. Terms of sale or lease and availability are subject to change or withdrawal without notice.

FLOOR PLAN - UNIT 287

219 - 301 Turner Road | North Chesterfield, VA 23225



Wilson Flohr, SIOR
(804) 521-1458
wilson@porterinc.com

Byron Holmes, CCIM, SIOR
(804) 521-1448
byron@porterinc.com

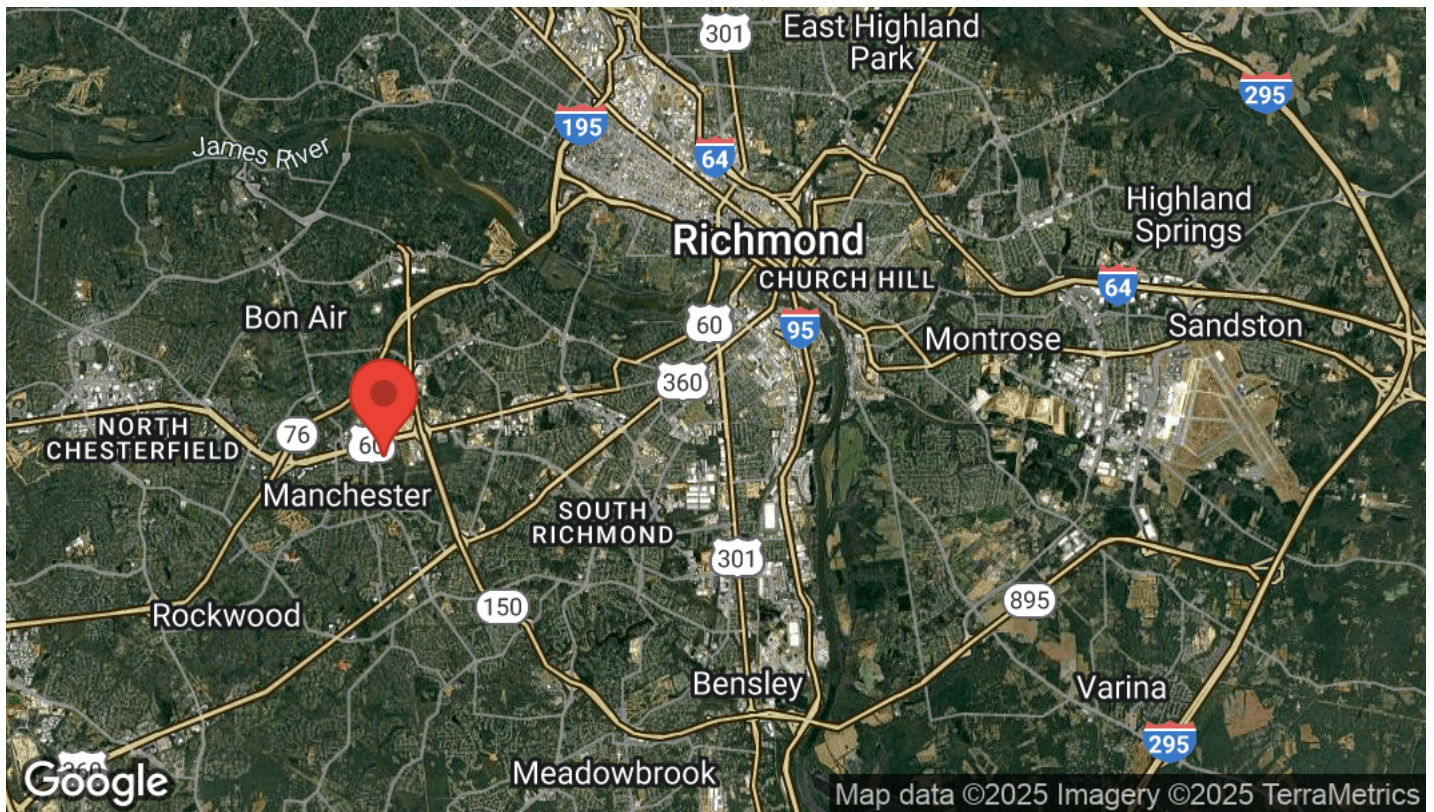
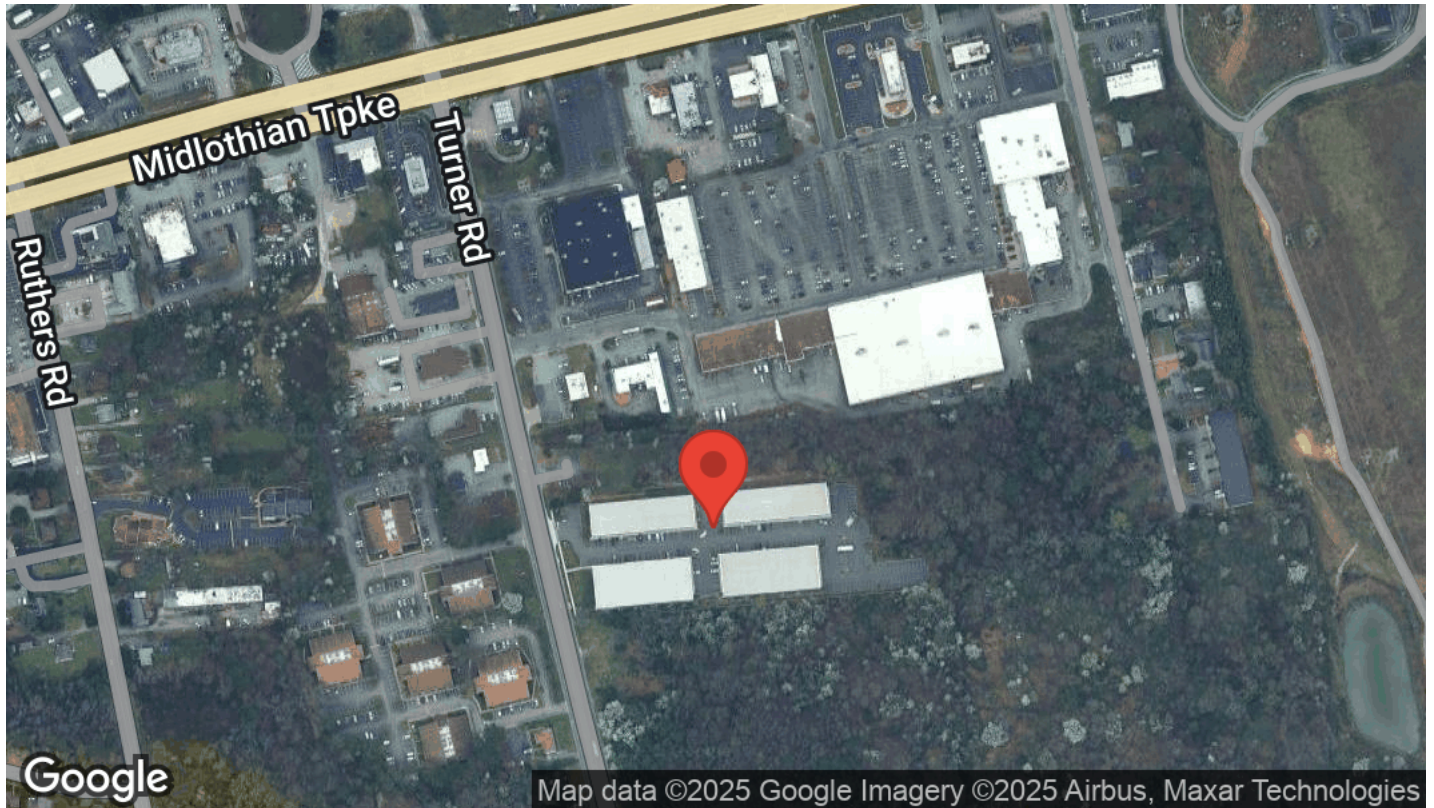


Porter Realty Company, Inc. | 4801 Radford Avenue | P.O. Box 6482 | Richmond, VA 23230 | www.porterinc.com

This information has been prepared by Porter Realty Company, Inc. for marketing purposes only. No representation or warranty, expressed or implied, is made as to the accuracy of the foregoing information. Terms of sale or lease and availability are subject to change or withdrawal without notice.

LOCATION MAPS

219 - 301 Turner Road | North Chesterfield, VA 23225



Wilson Flohr, SIOR
(804) 521-1458
wilson@porterinc.com

Byron Holmes, CCIM, SIOR
(804) 521-1448
byron@porterinc.com



Porter Realty Company, Inc. | 4801 Radford Avenue | P.O. Box 6482 | Richmond, VA 23230 | www.porterinc.com

This information has been prepared by Porter Realty Company, Inc. for marketing purposes only. No representation or warranty, expressed or implied, is made as to the accuracy of the foregoing information. Terms of sale or lease and availability are subject to change or withdrawal without notice.