



TRANSWESTERN

REAL ESTATE  
SERVICES



# WOODLAND COVE RETAIL

RETAIL FOR LEASE | Hwy 7 + Kings Point Rd | Minnetrista, MN



# WOODLAND COVE RETAIL SUMMARY

**LOCATION:** Hwy 7 + Kings Point Rd | Minnetrista, MN  
**LAND SIZE:** 2.73 Acres  
**DESCRIPTION:** New Construction for Retail/Service/Medical  
**SIGNAGE:** Monument Signage Available

## AVAILABILITY

**#102:** 2,065 SF\* w/ drive thru

**#104:** 1,388 SF\*

**#106:** 1,426 SF\*

\*can be combined up to 4,879 SF

## HIGHLIGHTS

- Strategically positioned at the entrance to Woodland Cove, a mixed-use development consisting of over 1,000 homes and a 148 unit market-rate apartment complex.
- Located directly across from a newly opened Mackenthun's Grocery Store, which includes Caribou Coffee and The Cove Wine & Spirits.
- Perfect for retailers and service providers looking to operate in this fast growing community with above-average household incomes.

## DEMOGRAPHICS

RADIUS:	5 MINUTES	10 MINUTES	15 MINUTES
<b>Population</b>	4,982	28,618	109,493
<b>Average HH Income</b>	\$184,615	\$206,302	\$172,579
<b>Median HH Income</b>	\$137,622	\$157,440	\$127,329

Sources: ESRI 2024 est. & MN Dept of Transportation 2023 Study avgs are per day total cars



### contacts RETAIL LEASING

**Tom Palmquist** • 952 381 5538 • [tom.palmquist@transwestern.com](mailto:tom.palmquist@transwestern.com)

**Janet Olson** • 612 359 1681 • [janet.olson@transwestern.com](mailto:janet.olson@transwestern.com)

# WOODLAND COVE SITE PLAN

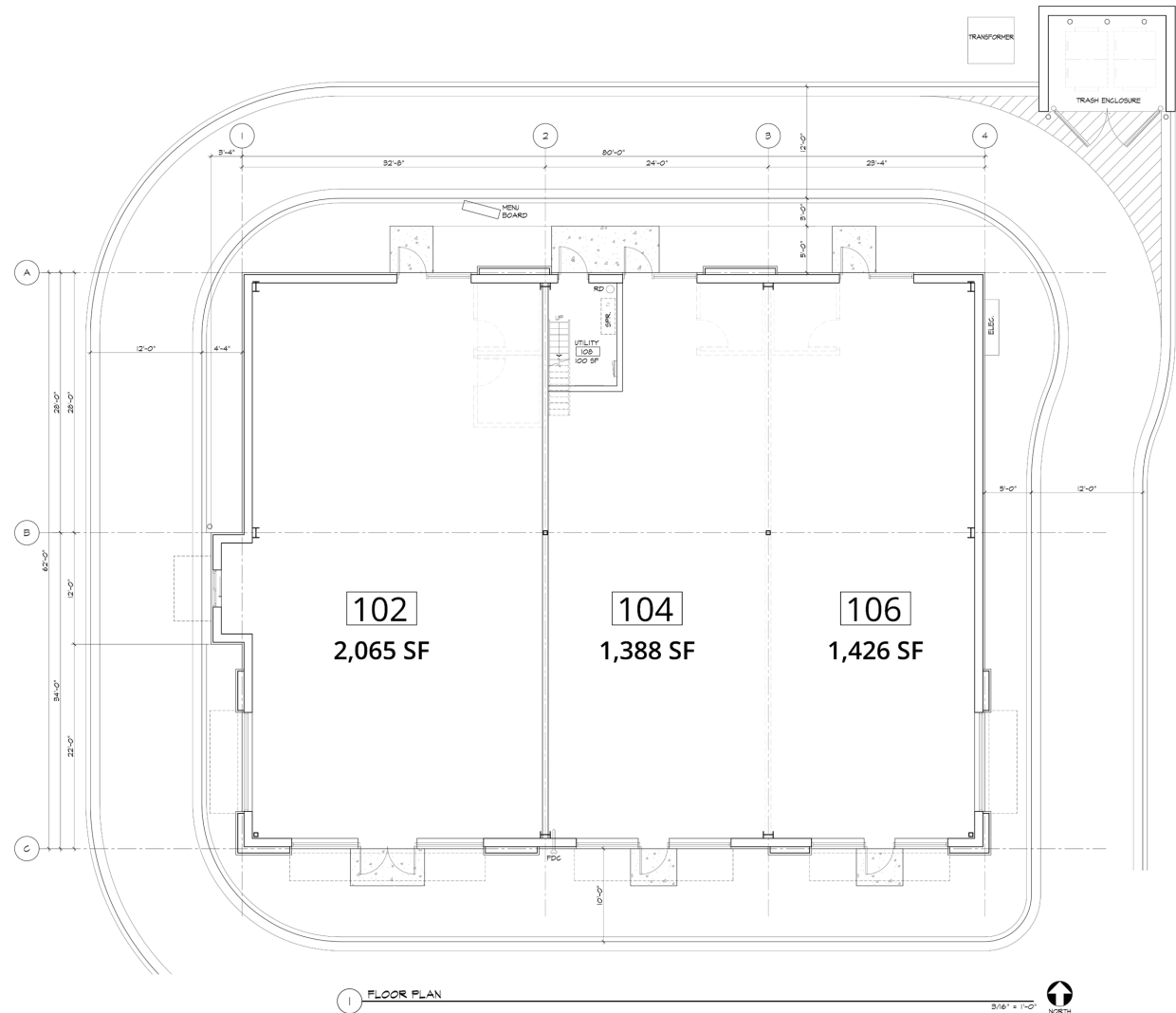
## AVAILABILITY

**#102:** 2,065 SF\*  
w/ drive thru

**#104:** 1,388 SF\*

**#106:** 1,426 SF\*

\* can be combined up to 4,879 SF



**contacts**  
**RETAIL LEASING**

**Tom Palmquist** • 952 381 5538 • [tom.palmquist@transwestern.com](mailto:tom.palmquist@transwestern.com)

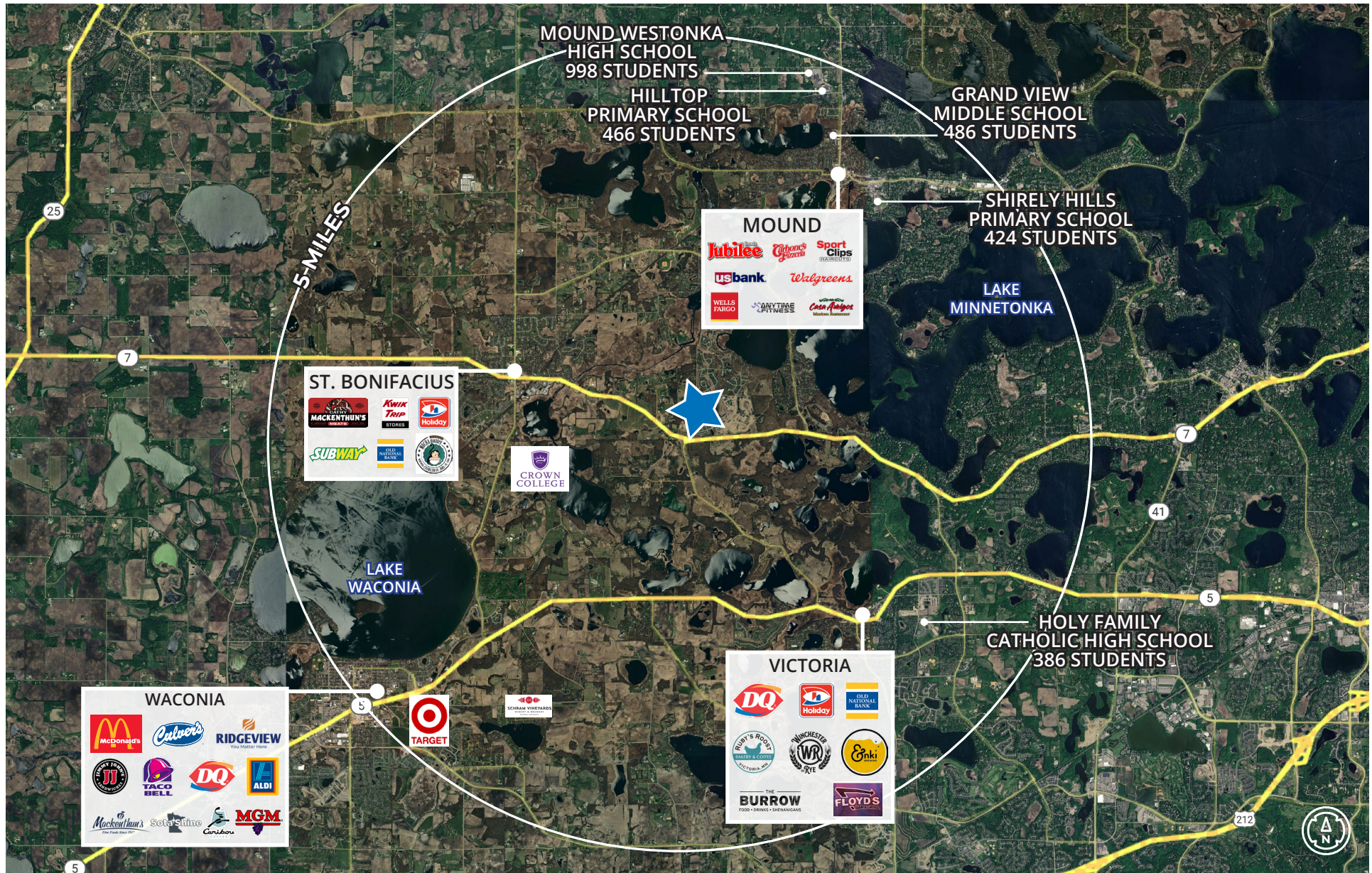
**Janet Olson** • 612 359 1681 • [janet.olson@transwestern.com](mailto:janet.olson@transwestern.com)



**REALTY  
RESOURCES**  
MEMBER



# WOODLAND COVE 5-MILE AREA



## contacts RETAIL LEASING

Tom Palmquist • 952 381 5538 • [tom.palmquist@transwestern.com](mailto:tom.palmquist@transwestern.com)

Janet Olson • 612 359 1681 • [janet.olson@transwestern.com](mailto:janet.olson@transwestern.com)



# WOODLAND COVE AREA PHOTOS



**contacts**  
**RETAIL LEASING**

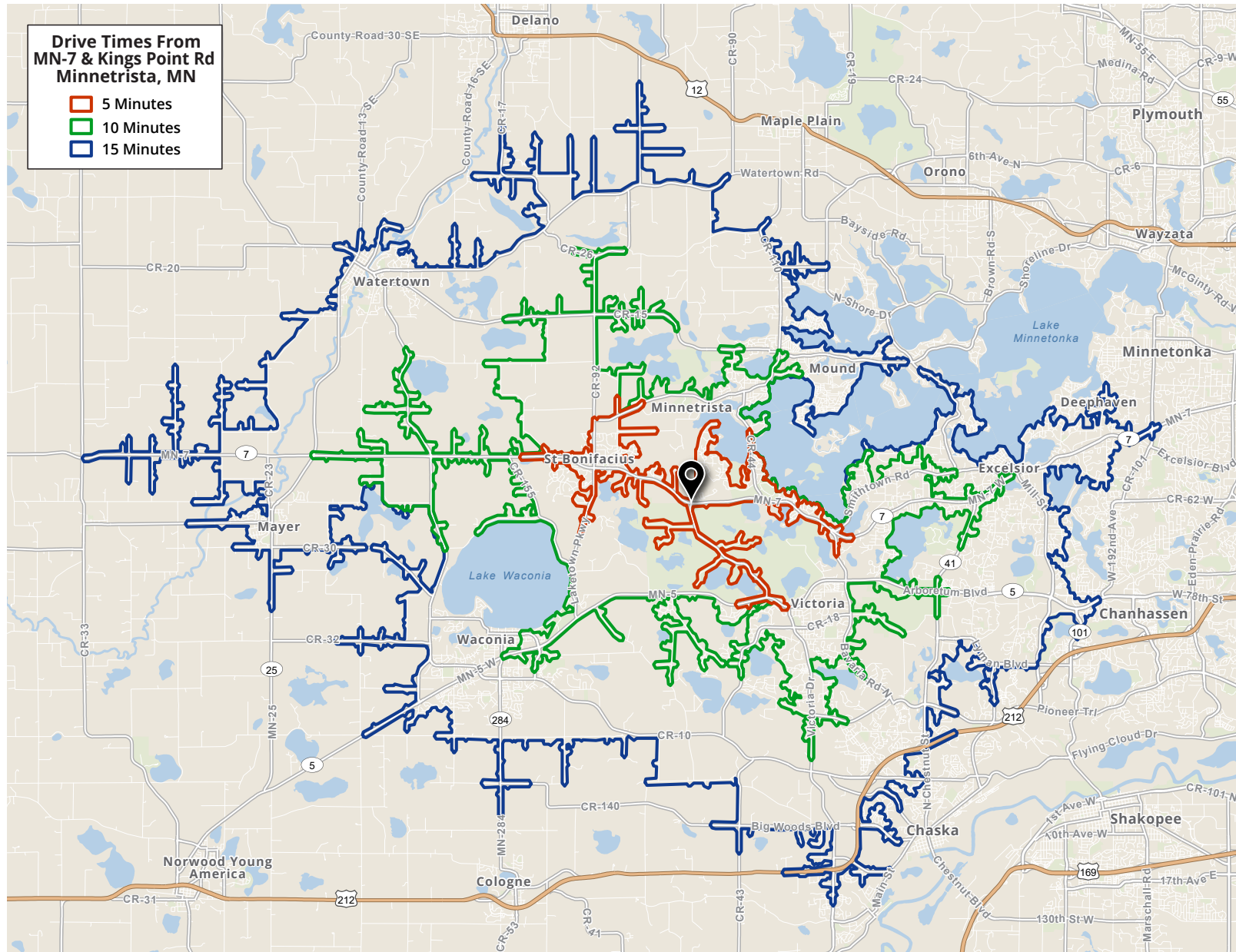
**Tom Palmquist** • 952 381 5538 • [tom.palmquist@transwestern.com](mailto:tom.palmquist@transwestern.com)

**Janet Olson** • 612 359 1681 • [janet.olson@transwestern.com](mailto:janet.olson@transwestern.com)



# WOODLAND COVE RETAIL

## 5-10-15 MILE DRIVE TIME MAP





# WOODLAND COVE HOUSING DEVELOPMENTS

