

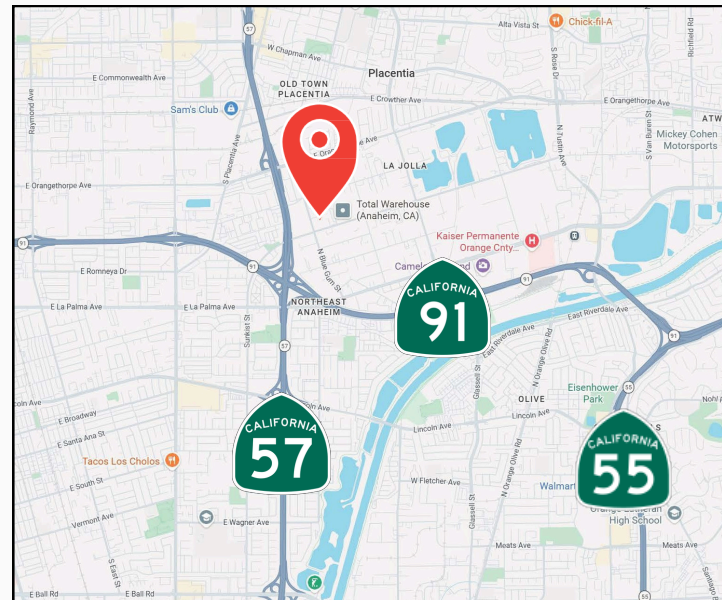
FOR LEASE ± 5,930 SQUARE FEET WITH GATED & PAVED YARD



2850 E. VIA MARTENS, ANAHEIM, CA 92806

PROPERTY HIGHLIGHTS

- Building Size: ± 5,930 SF
- Office Area: ± 1,500 SF
- ± 1,200 SF Bonus Mezzanine/Storage
- Loading: Two (2) 10x 10 Ground Level Doors (verify)
- Clearance: ± 16' Warehouse Clearance
- Yard: ± 4,800 SF Gated & Paved Yard
- Power: 400 amps, 3 phase (verify)
- Zoning: I — Industrial (verify)
- Fire Sprinklers: Yes
- Electrical/air line distribution
- Skylights throughout building creating lots of natural light
- Freeway Access: 57, 91, 5, 55, 22 Freeways



KYLE WILLIAMS, SIOR
Senior Vice President
(949) 293-6788 (Cell)
kyle@ashwillassociates.com
CA DRE Lic.02015940

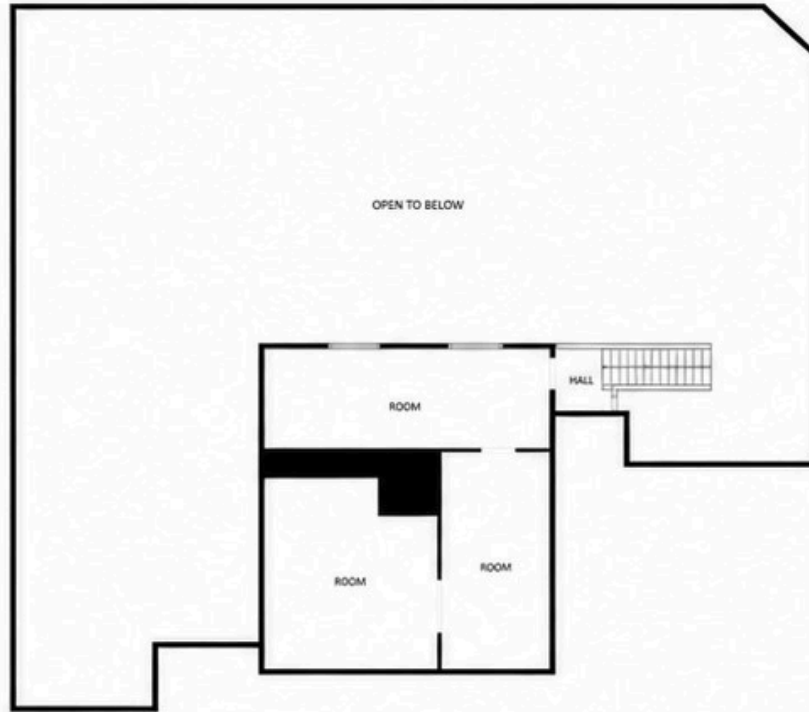
Disclaimer: This Information contained herein is believed reliable but not guaranteed. Photos may be digitally altered or artistic renderings. All trademarks and images are the property of their respective owners. Buyers and Tenants should verify information independently.

**Ashwill
Associates**
COMMERCIAL REAL ESTATE

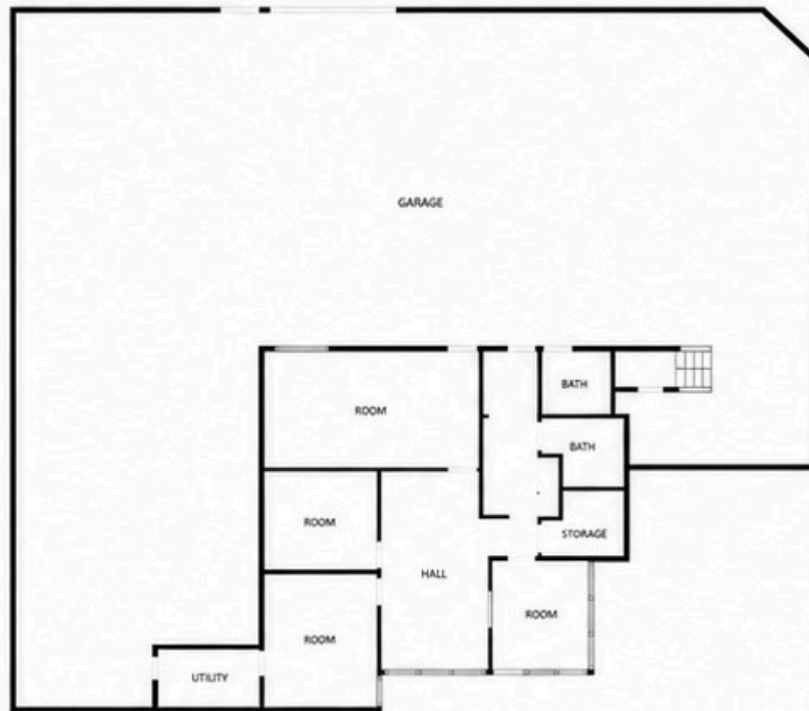
CORP. DRE LIC.01291393

**FOR LEASE ± 5,930 SQUARE FEET
WITH GATED & PAVED YARD**

FLOOR PLAN



2nd floor



1st floor

Disclaimer: This Information contained herein is believed reliable but not guaranteed. Photos may be digitally altered or artistic renderings. All trademarks and images are the property of their respective owners. Buyers and Tenants should verify information independently.

FOR LEASE

± 5,930 SQUARE FEET

WITH GATED & PAVED YARD

SITE PLAN



Disclaimer: This Information contained herein is believed reliable but not guaranteed. Photos may be digitally altered or artistic renderings. All trademarks and images are the property of their respective owners. Buyers and Tenants should verify information independently.

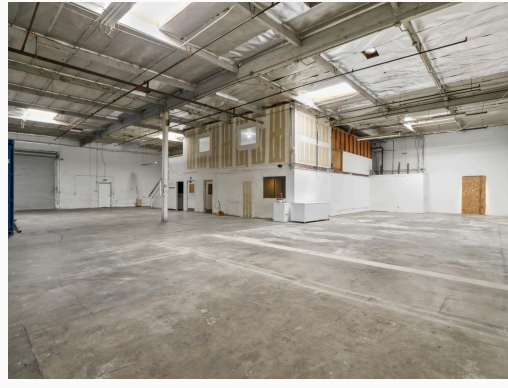
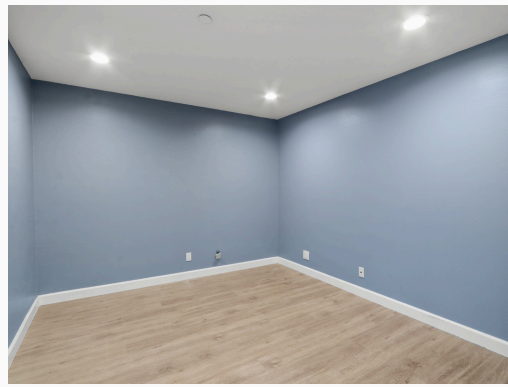
**Ashwill
Associates**
COMMERCIAL REAL ESTATE

CORP. DRE LIC.01291393

FOR LEASE

± 5,930 SQUARE FEET

WITH GATED & PAVED YARD



Disclaimer: This Information contained herein is believed reliable but not guaranteed. Photos may be digitally altered or artistic renderings. All trademarks and images are the property of their respective owners. Buyers and Tenants should verify information independently.

Ashwill Associates
COMMERCIAL REAL ESTATE

CORP. DRE LIC.01291393

FOR LEASE

± 5,930 SQUARE FEET

WITH GATED & PAVED YARD



Disclaimer: This Information contained herein is believed reliable but not guaranteed. Photos may be digitally altered or artistic renderings. All trademarks and images are the property of their respective owners. Buyers and Tenants should verify information independently.

Ashwill Associates
COMMERCIAL REAL ESTATE

CORP. DRE LIC. 01291393