



FOR SALE

Asking Price:

\$1,900,000

Contact us:

Daniel B. Smith, CCIM

Brokerage | Arkansas
+1 479 318 8488
dan.b.smith@ar.colliers.com

Steven P. Lane

Managing Director | Arkansas
+1 479 636 9000
steve.lane@ar.colliers.com



Accelerating success.

3503 S 55th Street, Suite 200
Rogers, AR 72758
+1 479 636 9000
colliers.com/arkansas

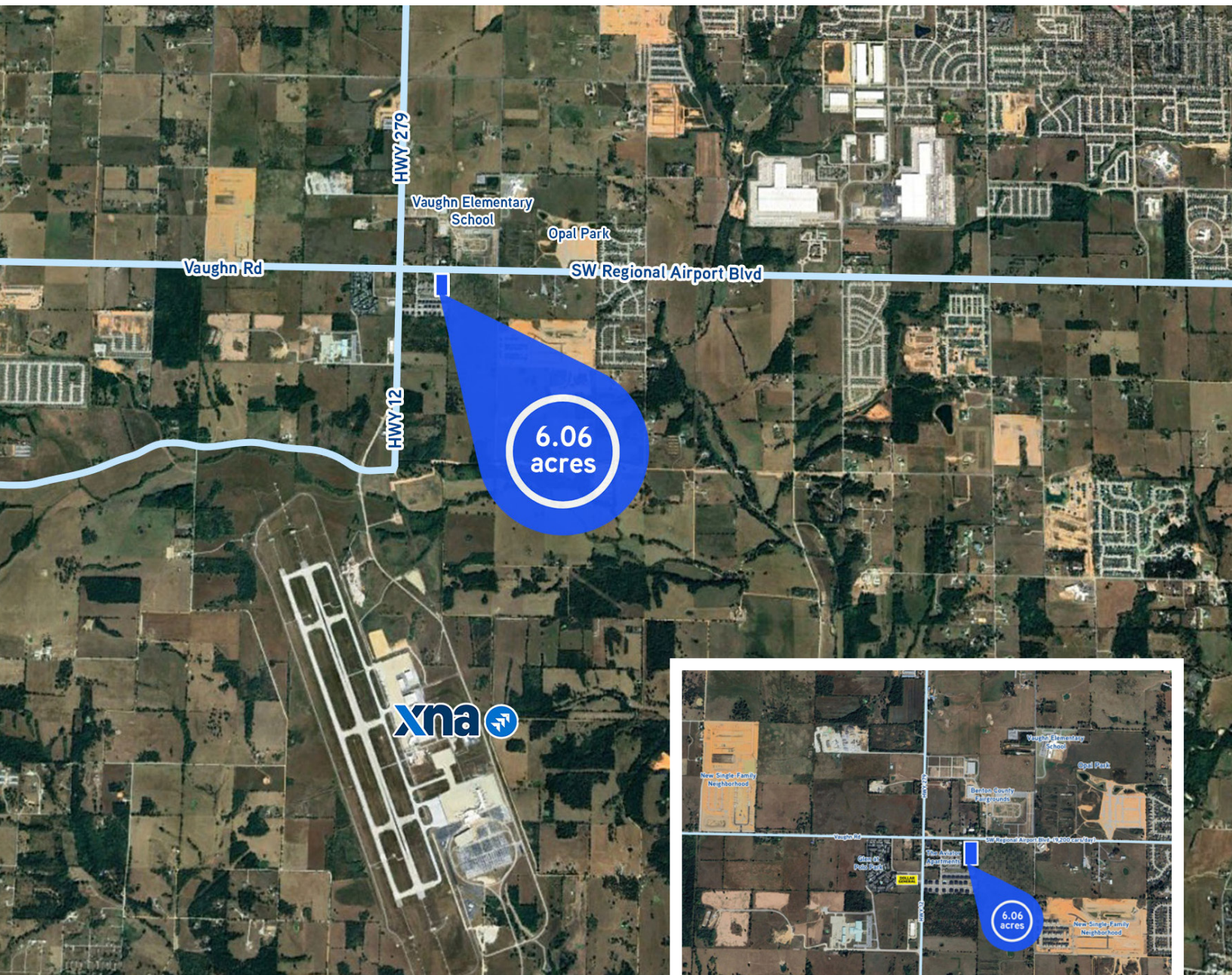
SW Regional Airport Blvd Bentonville, Arkansas

- 6.06 acres available
- Frontage is zoned C-2 and Rear is zoned R-4 in Bentonville
- Current zoning allows for a mix of commercial and residential/multifamily use
- Previously approved large scale development plan for multifamily and retail
- New 2025 Bentonville use plan designates this parcel as "Center Regional"
- Bentonville water and sewer on site
- Close proximity to multiple new single-family developments
- Adjacent to The Aviator Apartments and Walmart-owned parcel

Copyright © 2021 Colliers International.

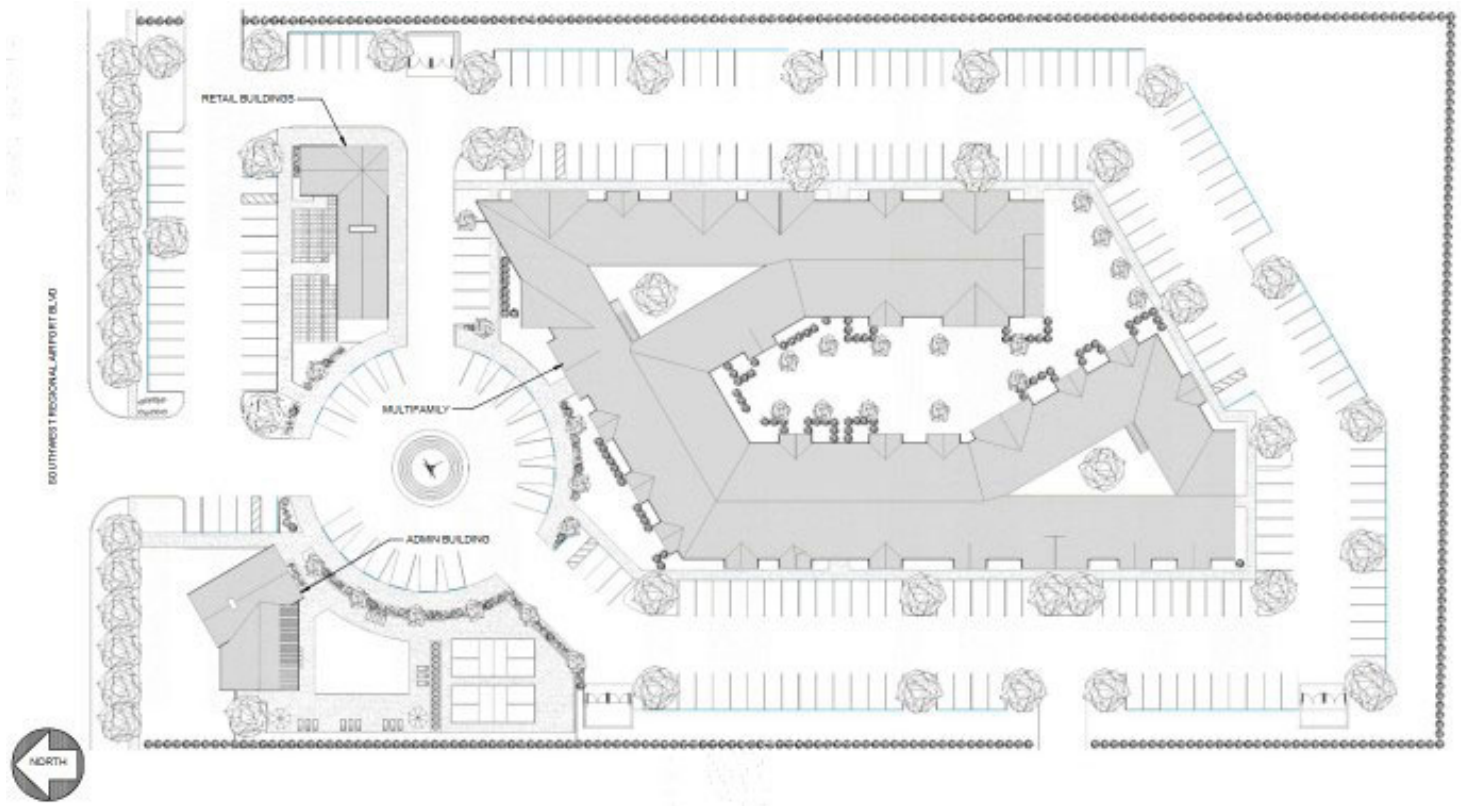
Information herein has been obtained from sources deemed reliable, however its accuracy cannot be guaranteed. The user is required to conduct their own due diligence and verification.

Location & Photos



Site Map & Demographics

Previously Approved Site Plan



Demographics

	1 Mile	3 Mile	5 Mile
Population (2024)	1,070	13,439	56,648
Projected Population (2029)	1,245	14,732	62,031
Average HH Income (2024)	\$103,753	\$119,679	\$134,783
Proj. Average HH Income (2029)	\$112,789	\$132,538	\$150,867
Households (2024)	523	4,858	19,724

Contact us:

Daniel B. Smith, CCIM

Brokerage | Arkansas
+1 479 318 8488
dan.b.smith@ar.colliers.com

Steven P. Lane

Managing Director | Arkansas
+1 479 636 9000
steve.lane@ar.colliers.com



Accelerating success.

3503 S 55th Street, Suite 200
Rogers, AR 72758
+1 479 636 9000
colliers.com/arkansas