



# For Lease

**Don Zebe**

+1 208 403 1973  
don.zebe@colliers.com

**Jared Zebe**

+1 208 709 7311  
jared.zebe@colliers.com

**Mike Zebe**

+1 208 705 6453  
mike.zebe@colliers.com

2043 E Center Street  
Pocatello, Idaho 83201  
+1 208 951 2100  
colliers.com/idaho

## Front Street Lofts

107 W. Little Street | Driggs, Idaho

### Highlights:

- 1,400 SF
- Easy Access
- Prime Location
- Adjacent to Huntsman Springs
- Adjacent to Teton County Offices
- New Construction
- Ample Parking

This document has been prepared by Colliers for advertising and general information only. Colliers makes no guarantees, representations or warranties of any kind, expressed or implied, regarding the information including, but not limited to, warranties of content, accuracy and reliability. Any interested party should undertake their own inquiries as to the accuracy of the information. Colliers excludes unequivocally all inferred or implied terms, conditions and warranties arising out of this document and excludes all liability for loss and damages arising there from. This publication is the copyrighted property of Colliers and/or its licensor(s). © 2025. All rights reserved. This communication is not intended to cause or induce breach of an existing listing agreement. Colliers Paragon, LLC.

# For Lease

## Property Information

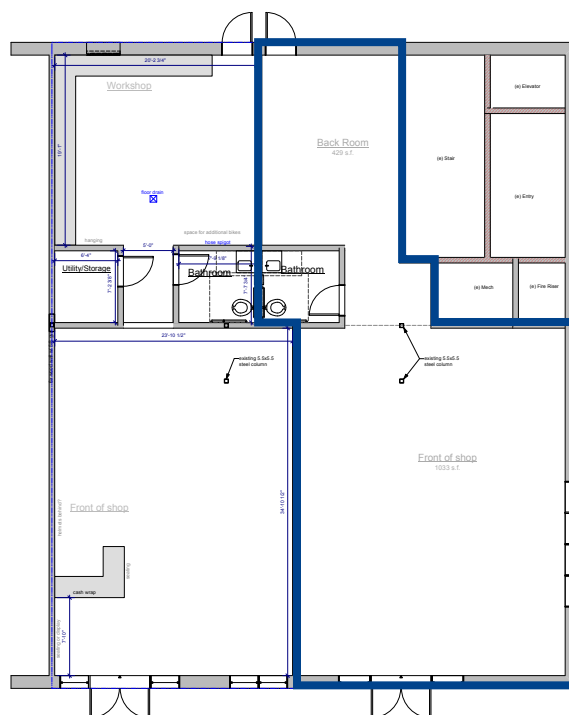
<b>Property Type</b>	Retail
<b>Total Building Size</b>	30,000 SF
<b>Available SF</b>	1,462 SF
<b>Land Size</b>	1 Acre
<b>Lease Type</b>	NNN
<b>Lease Rate</b>	Contact Agent
<b>Parking</b>	Ample
<b>Access</b>	Contact Agent



## Space Available

<b>Suite</b>	<b>Size</b>
4	1,462 SF

## Floor Plan



Suite 4 | 1,462 SF



# Location



Google Map



Street View



2043 E Center Street  
Pocatello, Idaho 83201  
+1 208 951 2100  
[colliers.com/idaho](http://colliers.com/idaho)

Demographics	1 Miles	3 Miles	5 Miles
Population	1,504	3,230	5,267
Households	615	1,261	2,048
Avg. HH Income	\$109,113	\$122,136	\$114,043