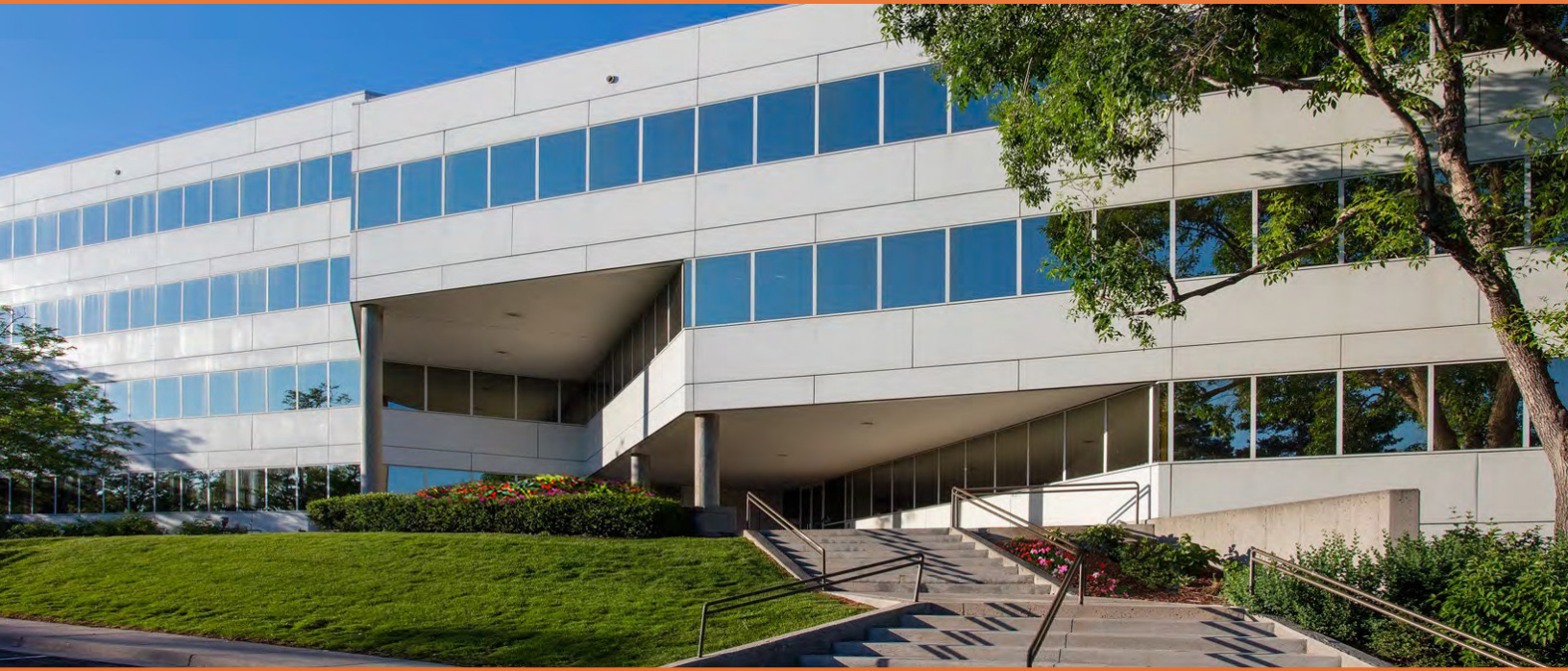


# Panorama Point

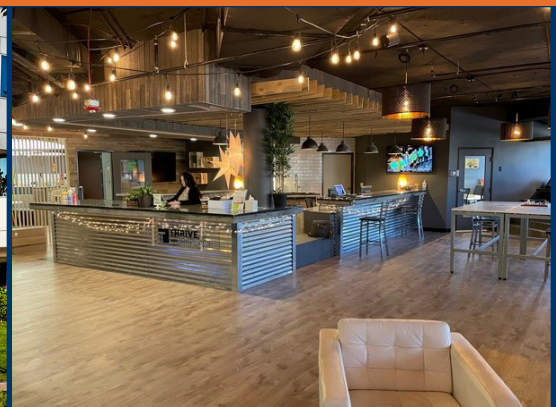
9200 E Mineral Avenue, Centennial, CO 80112

GREAT LOCATION IN PANORAMA PARK



## PROPERTY HIGHLIGHTS

- Located in Panorama Park, home to major facilities for Comcast, ULA, Travelport, Cisco, Arrow, Centura Health and RingCentral.
- Convenient access to I-25 and Dry Creek light rail station.
- On-site cafe and conferencing center.
- Executive covered parking.
- Beautiful mountain views.
- Roof top patio.



For leasing information please contact:

Matt Smith | 303.996.8460  
msmith@premisescommercial.com

Johnny Neff | 720.743.6399  
jneff@premisescommercial.com

**PREMISES**  
PREMISES COMMERCIAL REAL ESTATE, LLC  
WWW.PREMISESCOMMERCIAL.COM

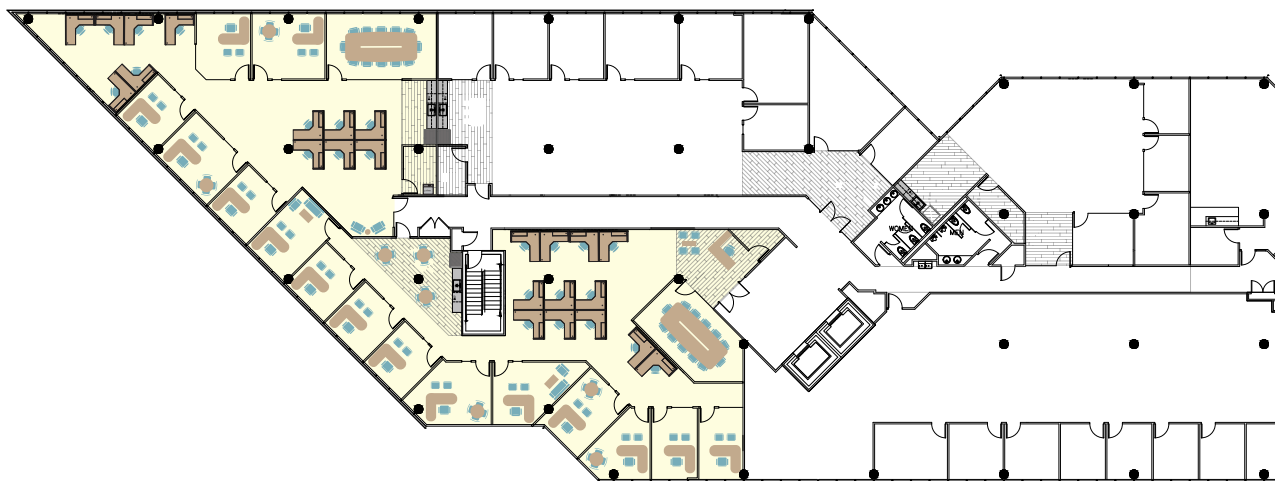
# Panorama Point

9200 E Mineral Avenue, Centennial, CO 80112

## AVAILABLE SUITES

Suite 230

3,537 sf



Suite 220

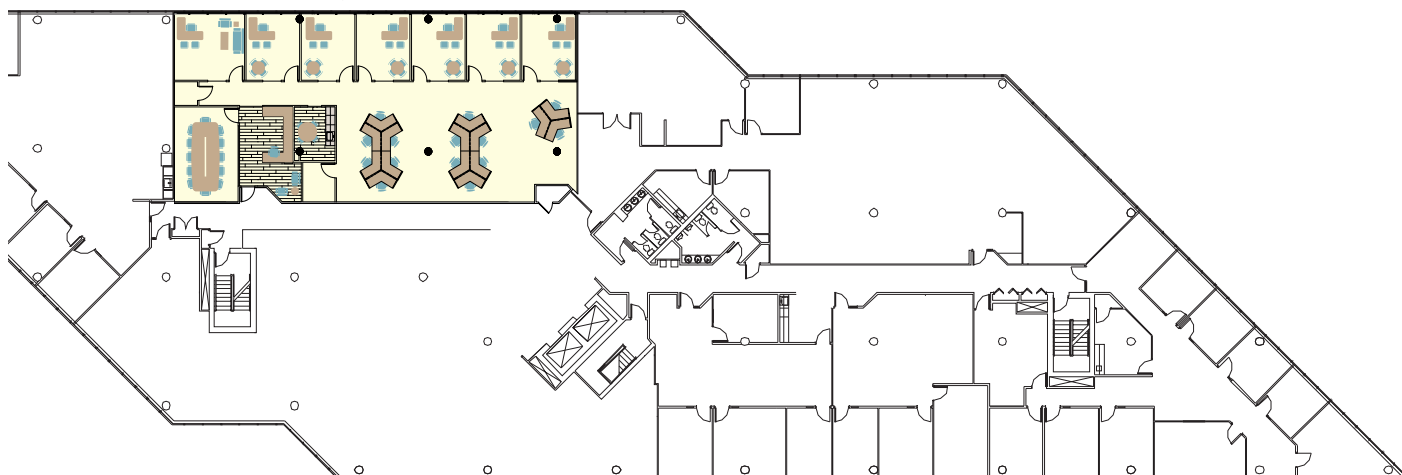
4,672 sf

Second Floor

Third Floor

Suite 355

4,158 sf



[WWW.PREMISESCOMMERCIAL.COM](http://WWW.PREMISESCOMMERCIAL.COM)

The information contained herein, while not guaranteed, has been secured from sources we believe to be reliable. Different brokerage relationships are available which include Seller/Landlord Agency, Buyer/Tenant Agency and Transaction Broker. Premises Commercial Real Estate, LLC is acting in this capacity as Landlord's/Sublessor's Agent, unless otherwise agreed, and owes its fiduciary allegiance to Landlord/Sublessor as defined by Colorado Real Estate Commission.