



**OFFICE FOR LEASE—\$27.50/SF/YR**

**Modified Gross**



**+/- 3,875 SF FOR LEASE**

2300 SE Monterey Road  
Stuart, Florida 34996



John W Chapman, Broker  
Chapman Commercial Real Estate, Inc.  
100 SW Albany Ave., Suite 310  
Stuart, Florida 34994  
ChapmanCommercialRealEstate.com  
john@ChapmanCommercialRealEstate.com

**Phone: 772-631-9168**

## **Property Information**

**OFFICE SPACE FOR LEASE  
2300 SE MONTEREY ROAD  
STUART, FL 34996**

**PROPERTY OVERVIEW: GREAT OPPORTUNITY to move your business into a beautiful two-story high-end professional office building located directly on Monterey Road in Stuart, Florida. Newest tenants include the Fox, McCluskey law firm and Apex Media Solutions. Fantastic +/- 3,875 SF open floor plan with 5 private offices, a conference room and a kitchen remaining on the first floor. RENT INCLUDES ELECTRIC.**

**Size: First Floor: +/- 3,875 SF**

**Location: 2300 SE Monterey Road**

**Zoning: General Office**

**Price: \$27.50/SF Modified Gross. RENT INCLUDES ELECTRIC.**

**Comments: First Floor Unit is 100% turn key and ready for immediate occupancy.**

John W Chapman, Broker  
Chapman Commercial Real Estate, Inc.

**Phone: 772-631-9168** [ChapmanCommercialRealEstate.com](http://ChapmanCommercialRealEstate.com)



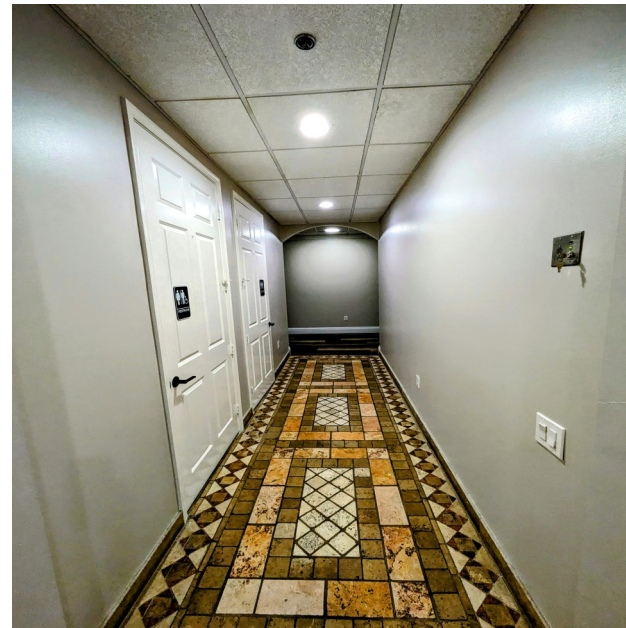




John W Chapman, Broker  
Chapman Commercial Real Estate, Inc.

Phone: 772-631-9168    [ChapmanCommercialRealEstate.com](http://ChapmanCommercialRealEstate.com)





John W Chapman, Broker  
Chapman Commercial Real Estate, Inc.

Phone: 772-631-9168    [ChapmanCommercialRealEstate.com](http://ChapmanCommercialRealEstate.com)





# 2300 SE Monterey Road in Stuart, Florida



John W Chapman, Broker  
Chapman Commercial Real Estate, Inc.

[ChapmanCommercialRealEstate.com](http://ChapmanCommercialRealEstate.com)

Phone: 772-631-9168

