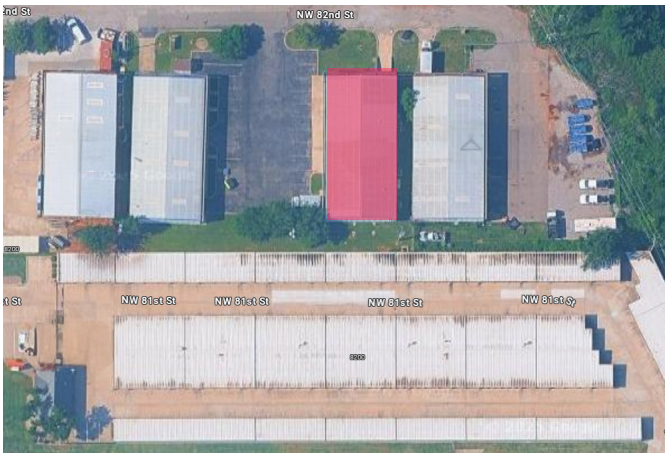


Fully Climate Controlled Industrial Building

1008 NW 82nd St is a 5,000 SF fully climate-controlled industrial building on 0.40 acres in North Oklahoma City. The property offers consistent temperature control throughout the entire facility, making it ideal for businesses requiring protected storage, specialized inventory, or comfortable working conditions. With 4 grade-level doors and flexible open space, it can support a wide range of industrial and distribution uses. Located just west of Broadway Extension between Wilshire and Britton Road, the property provides excellent access to major OKC corridors.



Highlights

- 5,000 SF fully climate-controlled facility with office
- 0.40 Acres
- 4 grade-level doors +1 dock high door
- I-2 Zoning
- North OKC location with quick access to Broadway Extension



Lease Rate:	\$3,500 / MG
Building Size:	5,000 SF
Lot Size:	0.40 Acres
Doors:	4 Grade-Level Doors
Zoning:	I-2

Call Michael Raff at **405.842.0100**

mraff@wigginprop.com | wigginprop.com

Industrial Building for Lease 1008 NW 82nd St

Oklahoma City, OK 73114

WIGGIN
PROPERTIES, LLC

