

FOR LEASE



1071 Hensley St | Richmond



±12,400 SF Industrial Building
Yard Size: ±15,232 SF or 0.35 AC | Office: ±1,880 SF
Just off Richmond Parkway with I-80 & I-580

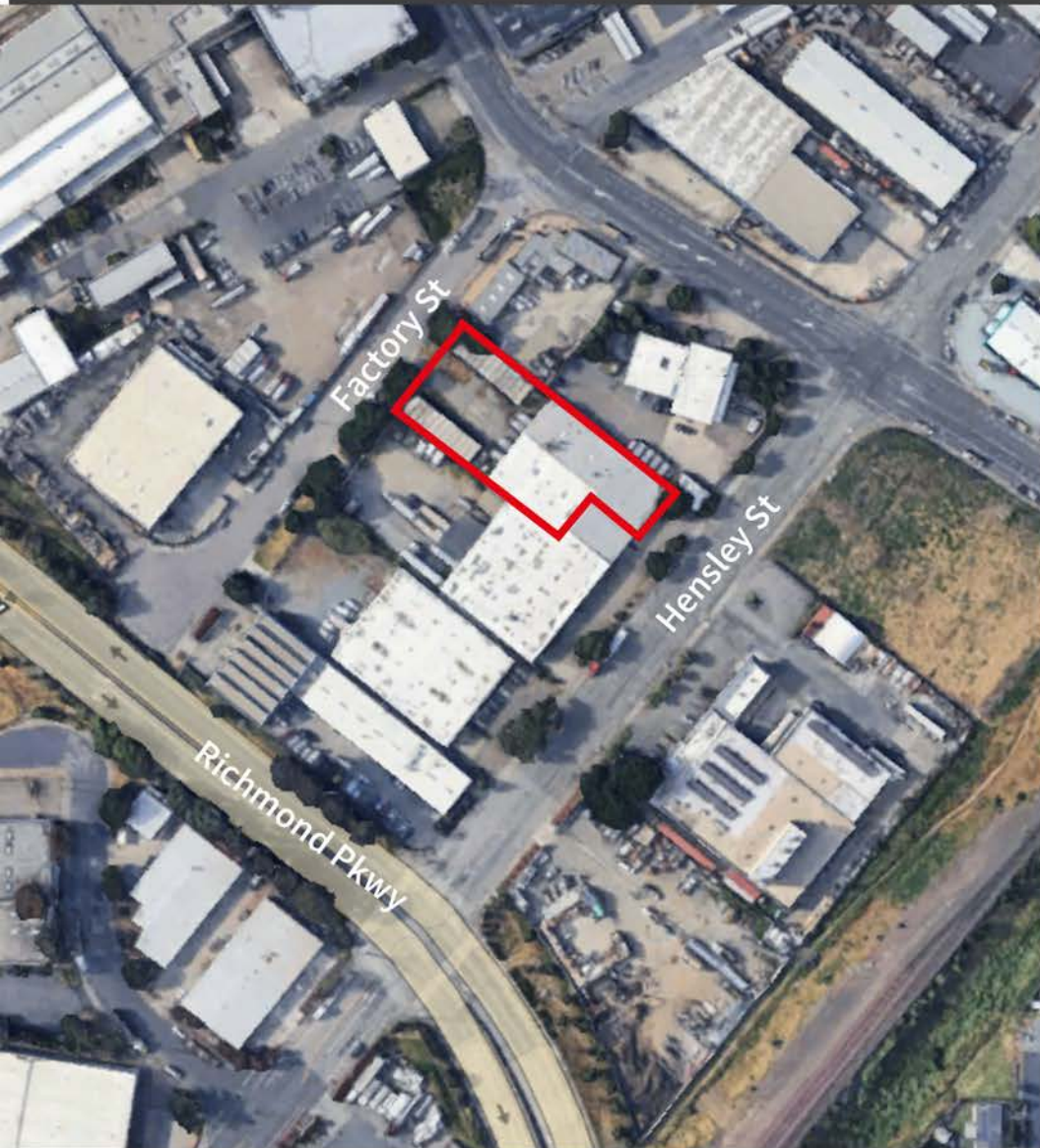
Eddie Shuai
License #01454419
M +1 415 336 3573
eddie.shuai@jll.com

Kristi Childers
License #01997043
M +1 510 812 2878
kristi.childers@jll.com

Owen Friske
License #02242302
M +1 415 632 9450
owen.friske@jll.com

FOR LEASE

1071 Hensley St | Richmond



Property Details

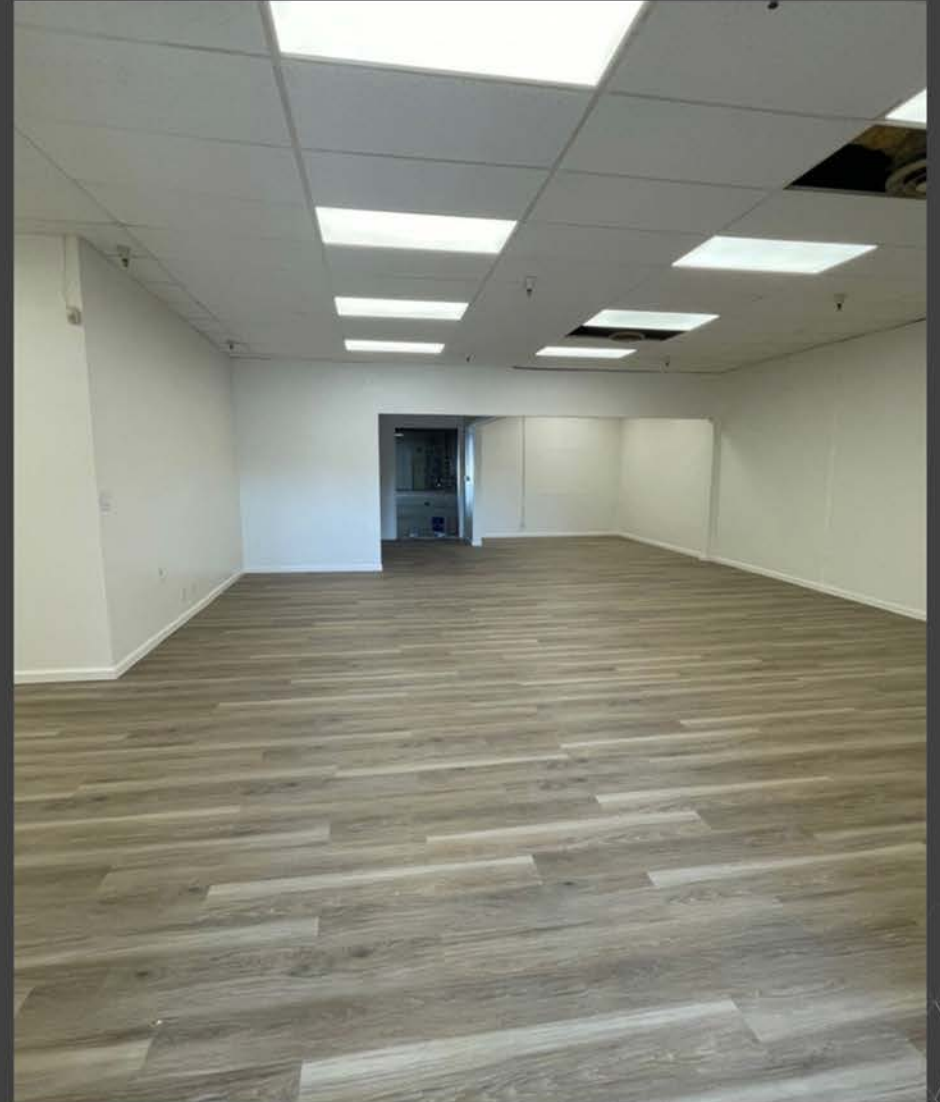
- ±12,400 SF industrial Bldg for lease
- Includes ±1,880 SF office space
- Newly renovated Office and restrooms with heating
- 4 Dock high doors
- ±400 amps, 208v service (tenant to confirm)
- ±14' clear height
- New roof
- Fenced Yard with onsite parking
- Sprinklered
- Gas available

FOR LEASE

1071 Hensley St | Richmond



Office Views

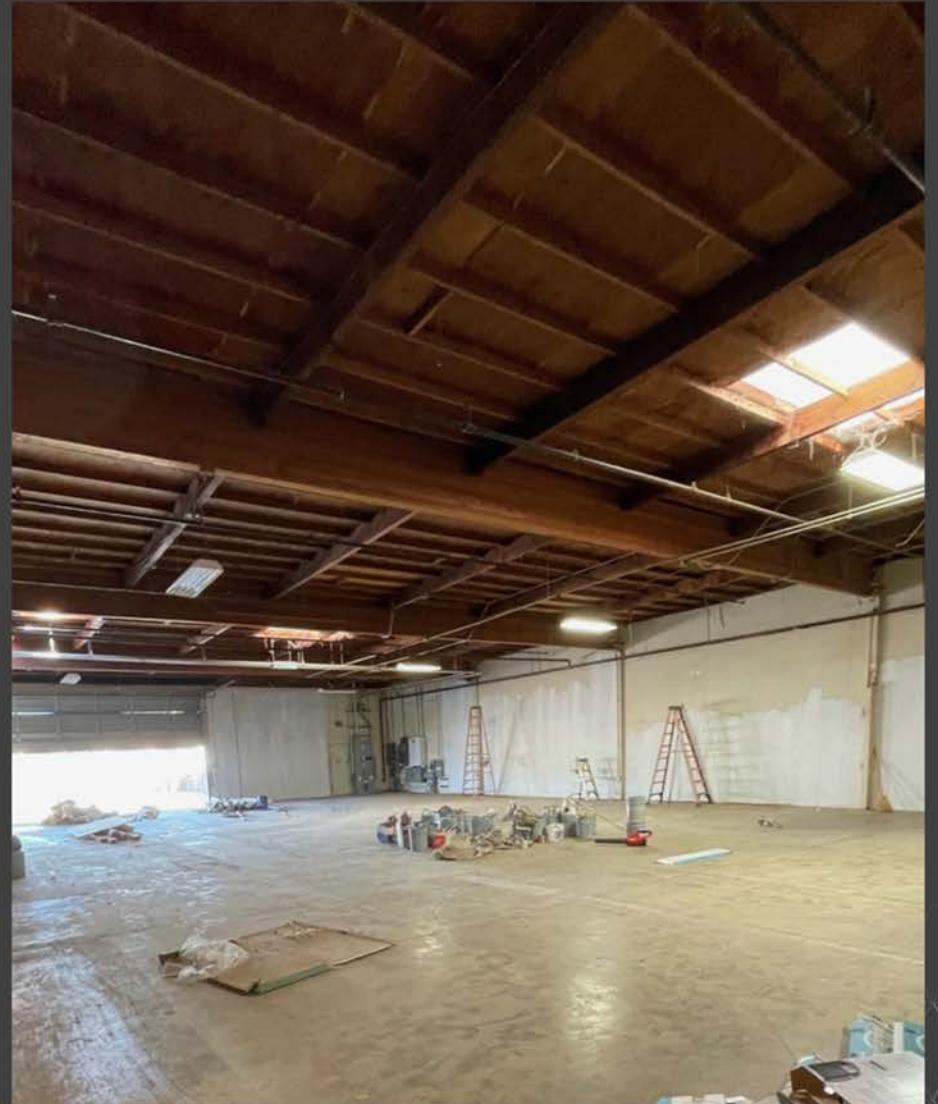


FOR LEASE

1071 Hensley St | Richmond



Warehouse Views



Warehouse renovations expected to be completed by 11/1/2024

FOR LEASE

1071 Hensley St

Richmond, CA



Eddie Shuai

License #01454419
M +1 415 336 3573
eddie.shuai@jll.com

Kristi Childers

License #01997043
M +1 510 812 2878
kristi.childers@jll.com

Owen Friske

License #02242302
M +1 415 632 9450
owen.friske@jll.com



Although information has been obtained from sources deemed reliable, neither Owner nor JLL makes any guarantees, warranties or representations, express or implied, as to the completeness or accuracy as to the information contained herein. Any projections, opinions, assumptions or estimates used are for example only. There may be differences between projected and actual results, and those differences may be material. The Property may be withdrawn without notice. Neither Owner nor JLL accepts any liability for any loss or damage suffered by any party resulting from reliance on this information. If the recipient of this information has signed a confidentiality agreement regarding this matter, this information is subject to the terms of that agreement. ©2024. Jones Lang LaSalle IP, Inc. All rights reserved.