

FOR SALE



255 INTERSTATE DRIVE, BUDA, TX 78610



6,000 SF Free-Standing Warehouse

ABOUT THE PROPERTY:

255 Interstate Drive is a 6,000 SF free-standing industrial warehouse in the Hays County Submarket of Buda, TX. This property is located in an established business park and features dock-high and grade-level loading, 18' clear height, 500 SF of office, fenced and gated outside storage yard, with direct access to Loop 4 and quick access to IH-35.

FEATURES:

- 6,000 SF free-standing warehouse (incl. 500 SF office)
- 18' clear height
- Dock-high and grade-level loading
- Fenced and gated outside storage yard
- Located in an established business park
- Direct access to S Loop 4 and quick access to IH-35

PROPERTY HIGHLIGHTS



AVAILABILITY & OVERVIEW



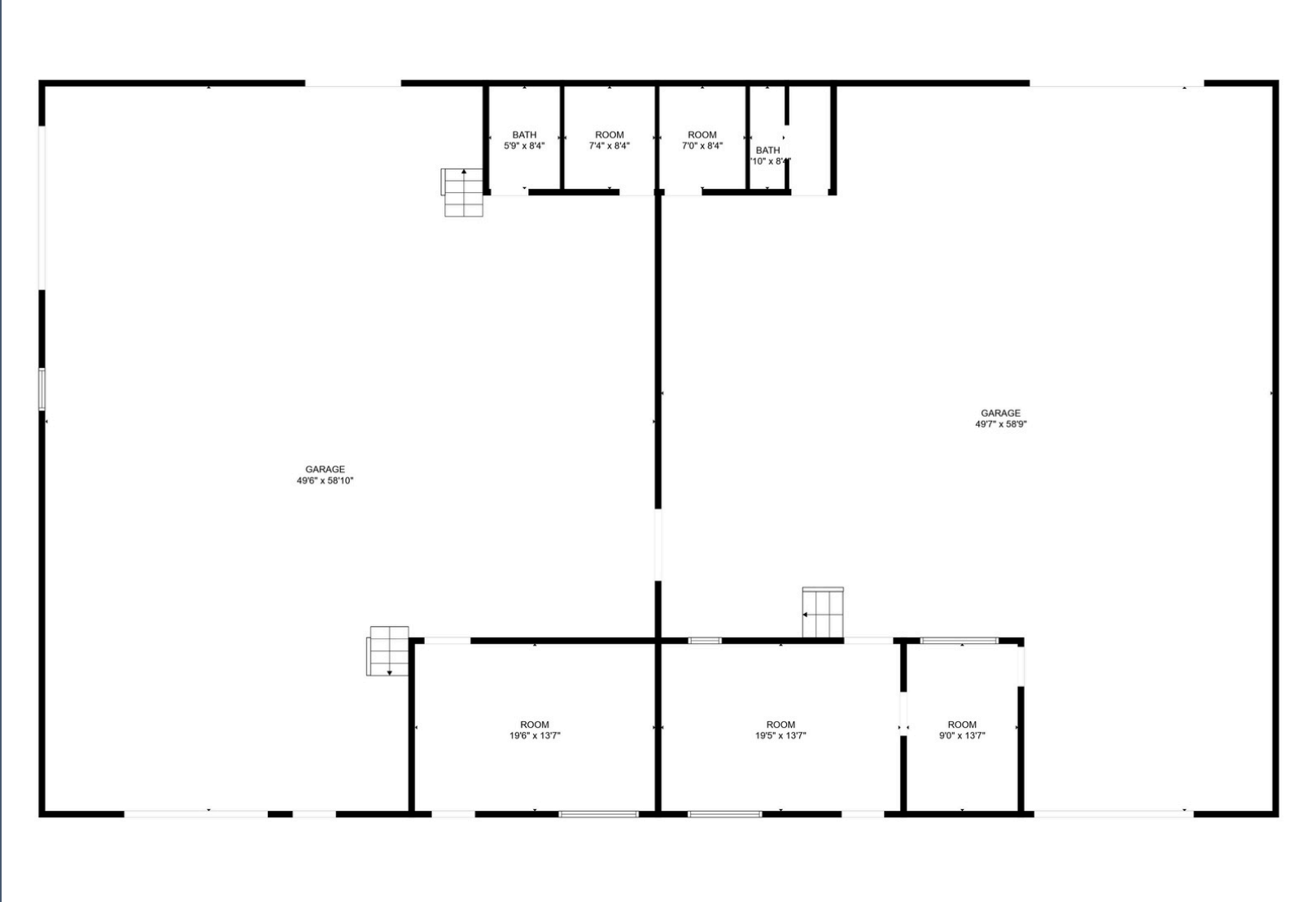
Drive Times:

I-35 = 1 minute
Downtown Buda = 5 minutes
TX 45 = 8 minutes
Austin = 35 minutes
San Antonio = 70 minutes

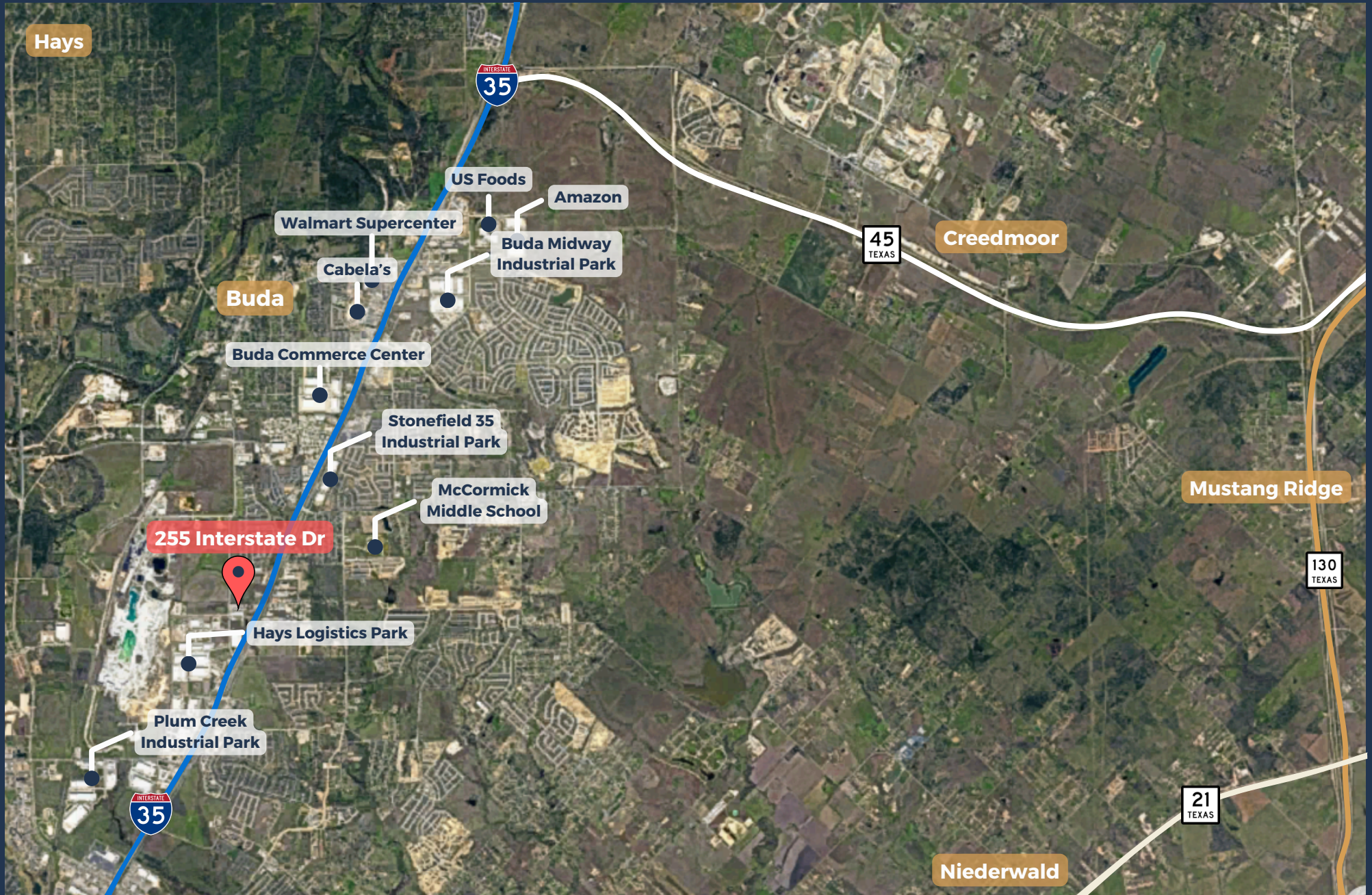
255 Interstate Dr.

- 6,000 SF standalone warehouse
- 2 grade-level doors
- 1 dock well
- 1,000 SF office
- 18' clear height

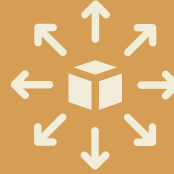
FLOOR PLAN



AVAILABILITY & OVERVIEW



MARKET ANALYTICS



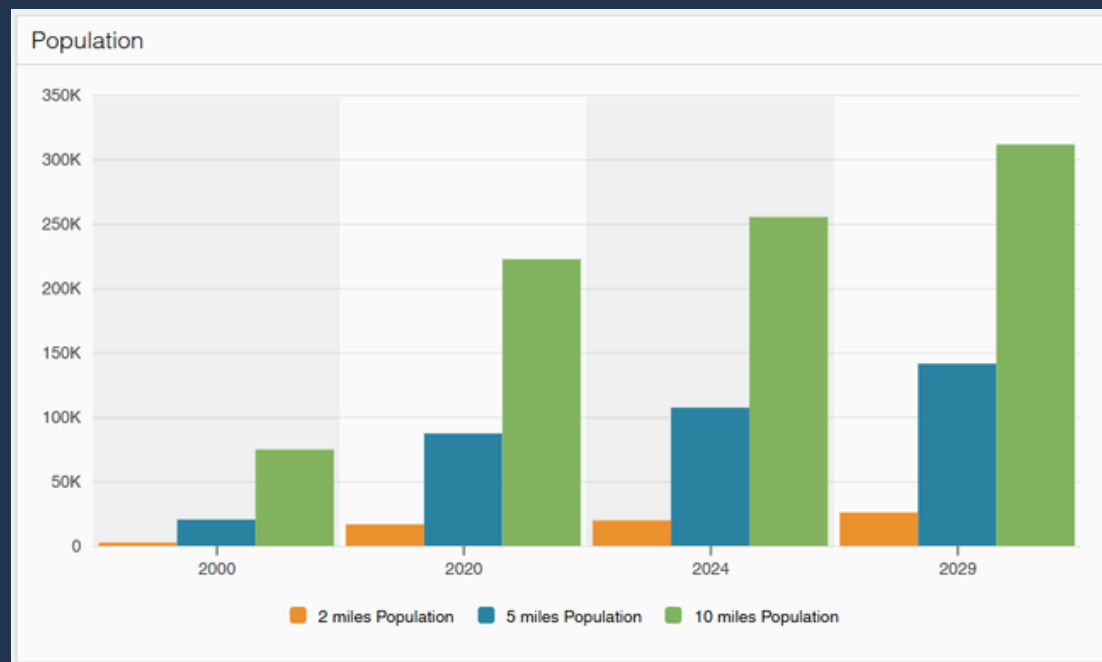
Situated along the IH-35 corridor, providing direct access between the San Antonio and Austin markets

Consistent year-over-year population growth.

Attractive location for distribution, manufacturing, and logistics companies

13,000 vehicles-per-day along the IH-35 frontage rd

17,000 households within a 3-mile radius



**according to CoStar Analytics*



CONTACT OUR TEAM



Cullen Mills
Co-Founder & President
cmills@llanorealty.com
(210) 926-5812



Colin McLellan
Partner
cmclellan@llanorealty.com
(210) 908-6345



Carson Byrd
Associate
cbyrd@llanorealty.com
(210) 941-0289



Mike Razniewski
Associate
mrz@llanorealty.com
(708) 519-0659