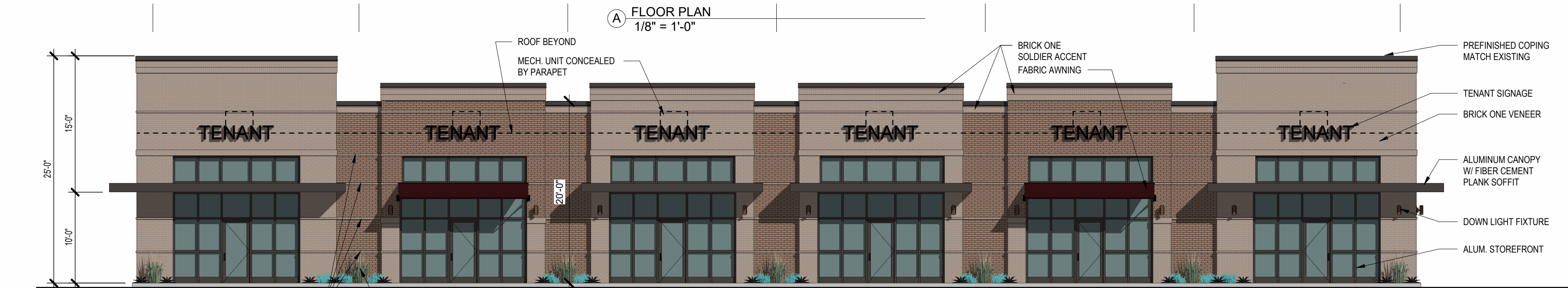


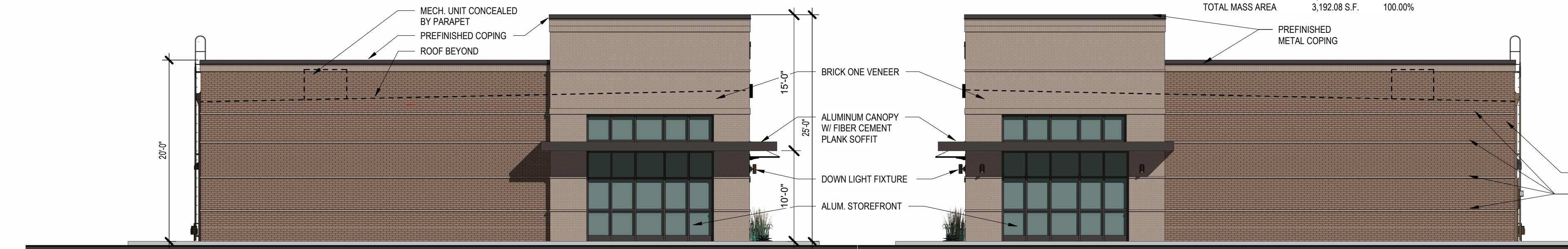
5 PERSPECTIVE VIEW



1 EAST ELEVATION
1/8" = 1'-0"

FACADE MATERIAL SURFACE AREA:

BRICK ONE	1,146.83 S.F.	35.92%
BRICK TWO	839.76 S.F.	26.30%
GLASS & TRIM AREA	1,205.49 S.F.	37.78%
TOTAL MASS AREA	3,192.08 S.F.	100.00%



2 SOUTH ELEVATION
1/8" = 1'-0"

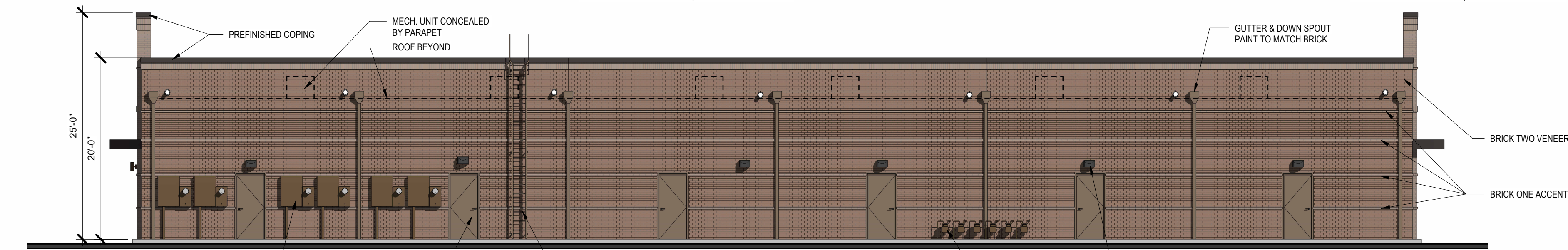
FACADE MATERIAL SURFACE AREA:

BRICK ONE	345.53 S.F.	25.98%
BRICK TWO	774.79 S.F.	58.26%
GLASS & TRIM AREA	209.42 S.F.	15.76%
TOTAL MASS AREA	1,329.74 S.F.	100.00%

3 NORTH ELEVATION
1/8" = 1'-0"

FACADE MATERIAL SURFACE AREA:

BRICK ONE	345.53 S.F.	25.98%
BRICK TWO	774.79 S.F.	58.26%
GLASS & TRIM AREA	209.42 S.F.	15.76%
TOTAL MASS AREA	1,329.74 S.F.	100.00%



4 WEST ELEVATION
1/8" = 1'-0"

FACADE MATERIAL SURFACE AREA:

BRICK ONE	194.19 S.F.	6.93%
BRICK TWO	2,482.01 S.F.	87.87%
DOOR & TRIM AREA	145.46 S.F.	5.20%
TOTAL MASS AREA	2,801.66 S.F.	100.00%



EXTERIOR MATERIALS

RETAIL CENTER EXTERIOR MATERIALS:

BRICK VENEER ONE MANUFACTURE: TBD STYLE / SIZE: TBD COLOR: TBD MORTAR COLOR: TBD	STOREFRONT MANUFACTURE: TUBELITE STYLE / SIZE: 2"x4" ALUMINUM COLOR: DARK BRONZE MORTAR COLOR: T.B.D.
BRICK VENEER TWO MANUFACTURE: TBD STYLE / SIZE: TBD COLOR: TBD MORTAR COLOR: TBD	GLAZING MANUFACTURE: PPG STYLE / SIZE: 1" INSULATED LOW-E COLOR: LITE GREY
BRICK VENEER ACCENT MANUFACTURE: TBD STYLE / SIZE: TBD COLOR: TBD MORTAR COLOR: TBD	PREFINISHED METAL CORNICE MANUFACTURE: T.B.D. STYLE / SIZE: T.B.D. COLOR: DARK BRONZE FINISH: SATIN
METAL CANOPY MANUFACTURE: TBD STYLE / SIZE: TBD COLOR: DARK BRONZE REMARK: INTRICAL GUTTER & WOOD SOFFIT	AWININGS MANUFACTURE: T.B.D. STYLE / SIZE: FABRIC / METAL COLOR: BURGANDY REMARK: 3'-0" OVERHANG
	UP & DOWNLIGHTS MANUFACTURE: T.B.D. STYLE / SIZE: T.B.D. COLOR: MATCH BRICK

GENERAL NOTE:
1. MECHANICAL EQUIPMENT ROOF MOUNTED SHALL BE INSTALLED SUCH THAT THE TOP OF THE EQUIPMENT IS BELOW THE HIGHEST POINT OF THE PARAPET WALLS.
2. PARAPET WALLS OR TOWERS THAT PROJECT ABOVE OTHER PORTIONS OF THE BUILDING SHALL BE FINISHED OR PAINTED ON REAR SIDES WITH THE MATERIALS SIMILAR TO THE PRESENTATION SIDE OR PAINT COLOR.

W. Michael Stewart
Architect
540 Grove Isle Cir. 103
Vero Beach, Florida 32962

1744 ROCK SPRINGS RD.
RETAIL CENTER
SMYRNA, TENNESSEE

04/12/2024

A0.1