



SOUTH PARK GROUP

www.southparkgroup.com



FOR LEASE

CREATIVE / THERAPY OFFICE

519 N. La Cienega Blvd, Suite 9
Los Angeles, California 90048

Currently an operating Spa. Ground floor space in a courtyard setting with kitchen, bath and a private office. Ideal for medical use such as Pilates, Personal Training or Hair & Make up.

AVAILABLE SPACE

Size: Approximately 800 rentable sqft

Rate: \$4.25 per sqft, Modified Gross

Parking: Available at \$150 per month

JACK RAVAN

Tel. 323.782.1270

E. jackravan@southparkgroup.com

No. 00890189

MEGAN NASSIR

Tel. 323.782.1264

E. megan@southparkgroup.com

No. 02179218

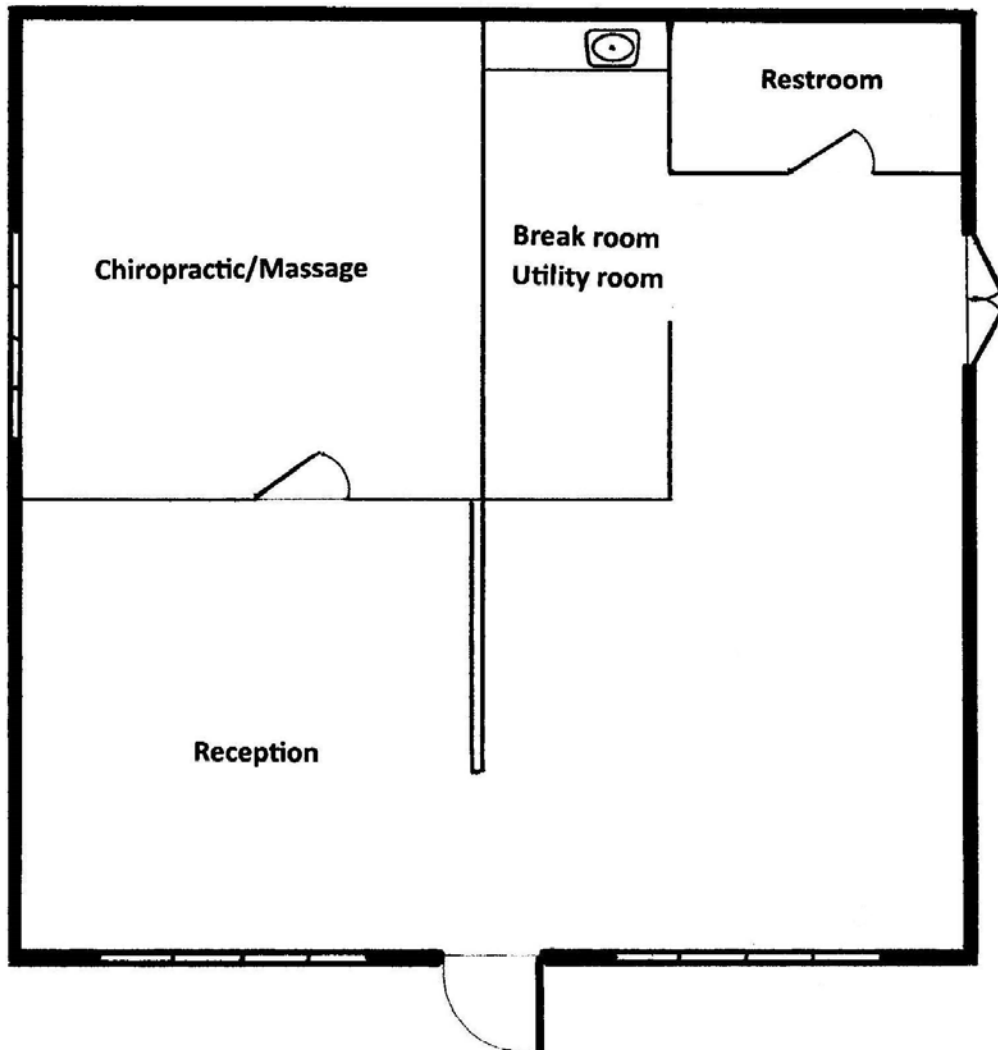
SOUTH PARK GROUP | 8322 Beverly Blvd., Suite 301 | Los Angeles, CA 90048

This information has been furnished by sources that we deem reliable, but for which we assume no liability. The information contained herein is given, in confidence, with the understanding that all negotiations pertaining to this property be handled through the submitting office. All measurements are approximate.



FLOOR PLAN

519 N. La Cienega Blvd., Suite 9, Los Angeles, California 90048



Not Drawn to Scale



SOUTH PARK GROUP

www.southparkgroup.com

COURTYARD

519 N. La Cienega Blvd., Suite 9, Los Angeles, California 90048



SOUTH PARK GROUP | 8322 Beverly Blvd., Suite 301 | Los Angeles, CA 90048

This information has been furnished by sources that we deem reliable, but for which we assume no liability. The information contained herein is given, in confidence, with the understanding that all negotiations pertaining to this property be handled through the submitting office. All measurements are approximate.

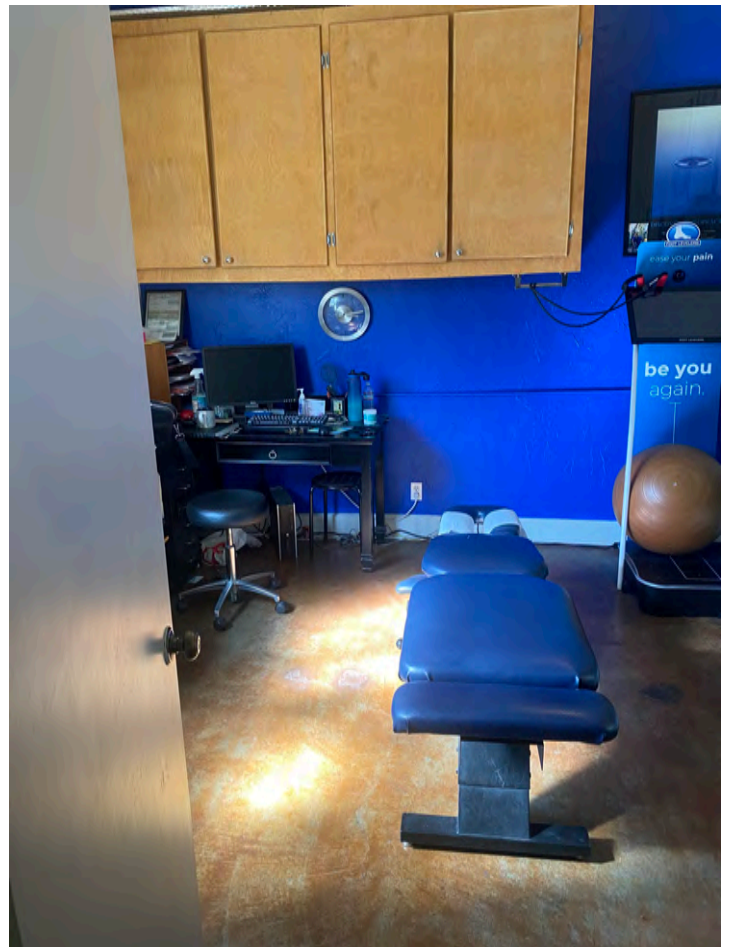


SOUTH PARK GROUP

www.southparkgroup.com

INTERIOR

519 N. La Cienega Blvd., Suite 9, Los Angeles, California 90048



SOUTH PARK GROUP | 8322 Beverly Blvd., Suite 301 | Los Angeles, CA 90048

This information has been furnished by sources that we deem reliable, but for which we assume no liability. The information contained herein is given, in confidence, with the understanding that all negotiations pertaining to this property be handled through the submitting office. All measurements are approximate.