



# 745

**Emerson Street**

Palo Alto | California

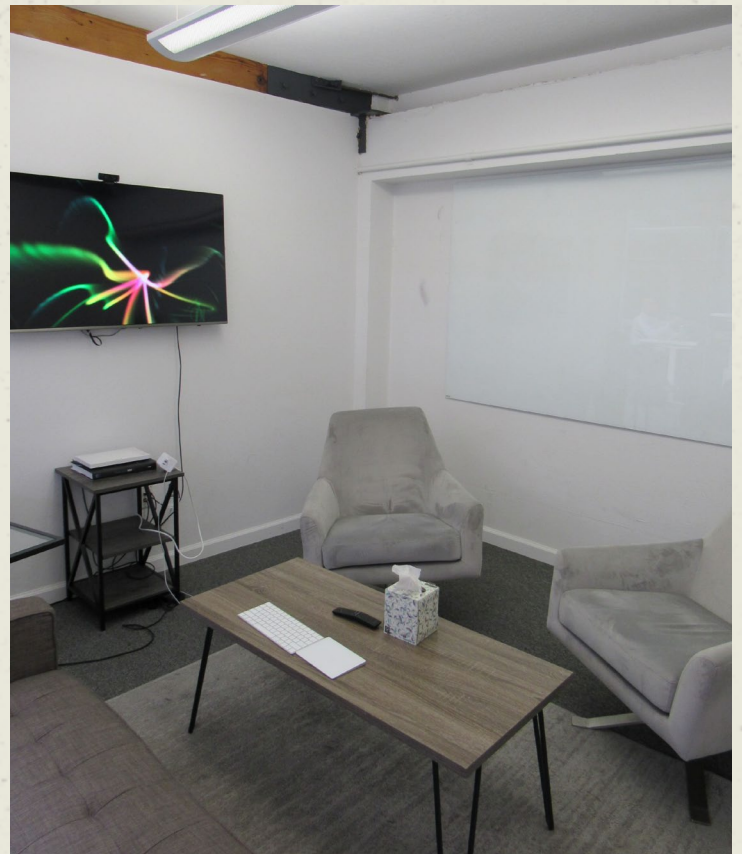
**±8,898 SF OFFICE FOR LEASE**

**CBRE**

# PROPERTY OVERVIEW

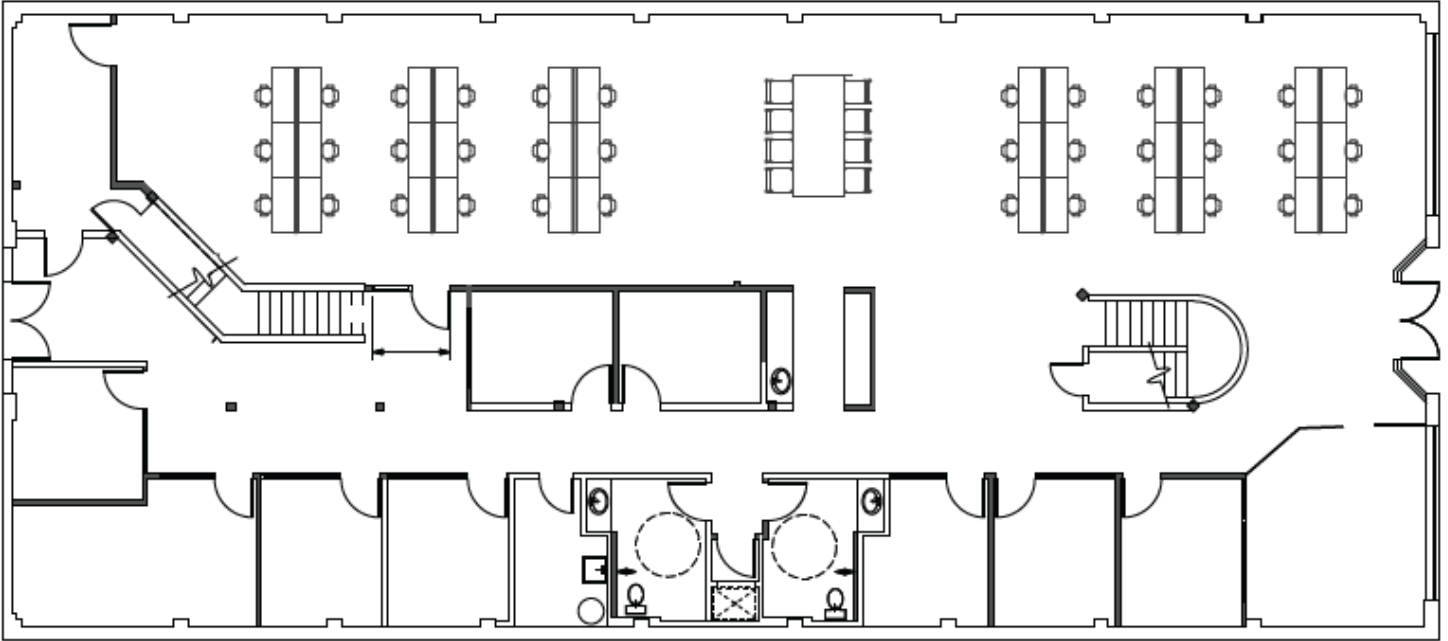


- ± 8,898 SF
- ±60 adjustable height bench stations available
- 20 garage parking spaces
- Plug & Play
- Exposed trusses
- High ceilings
- 5-minute walk to Caltrain
- Across the street from Whole Foods
- Kitchen
- Available immediately

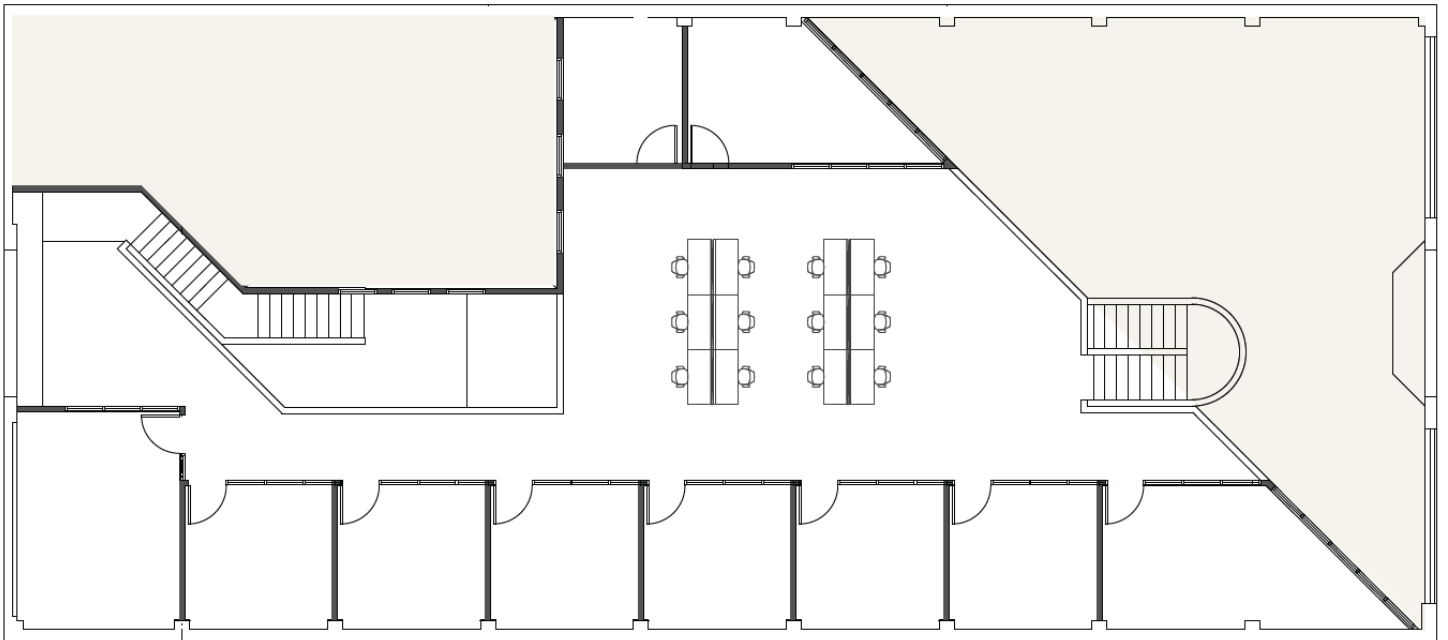


# FLOOR PLAN

## FLOOR 1 - SEATING FOR APPROXIMATELY 40 PEOPLE

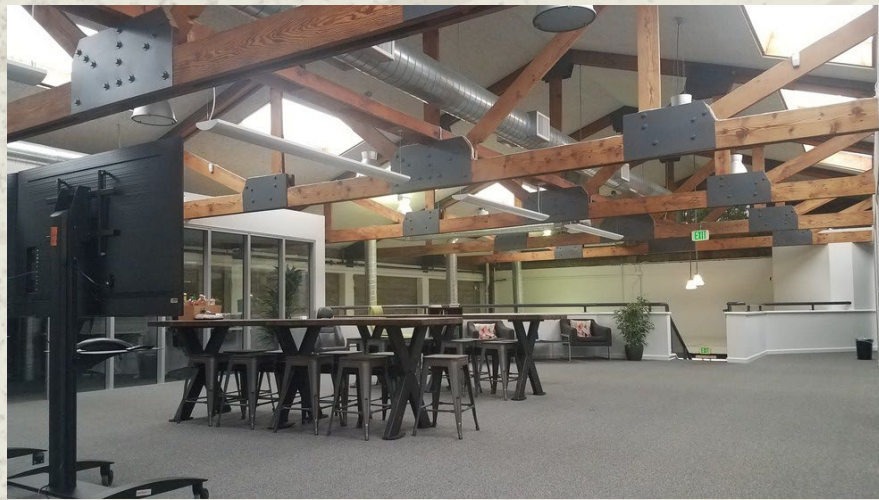
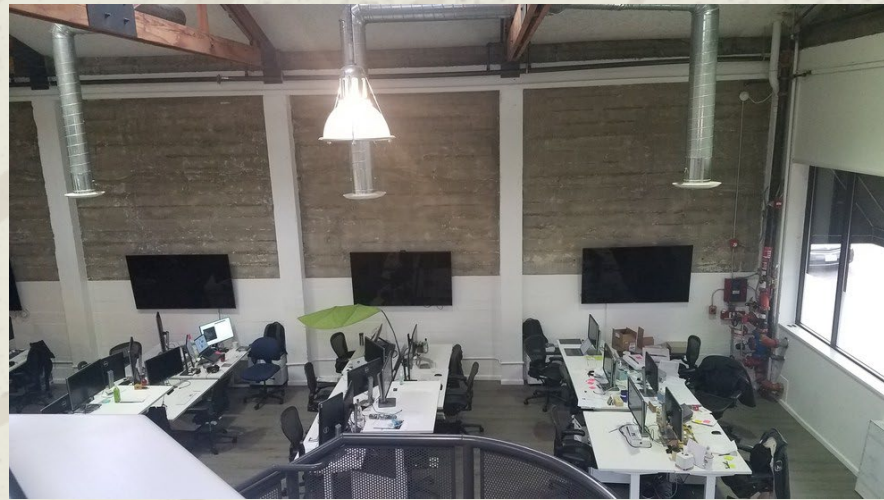
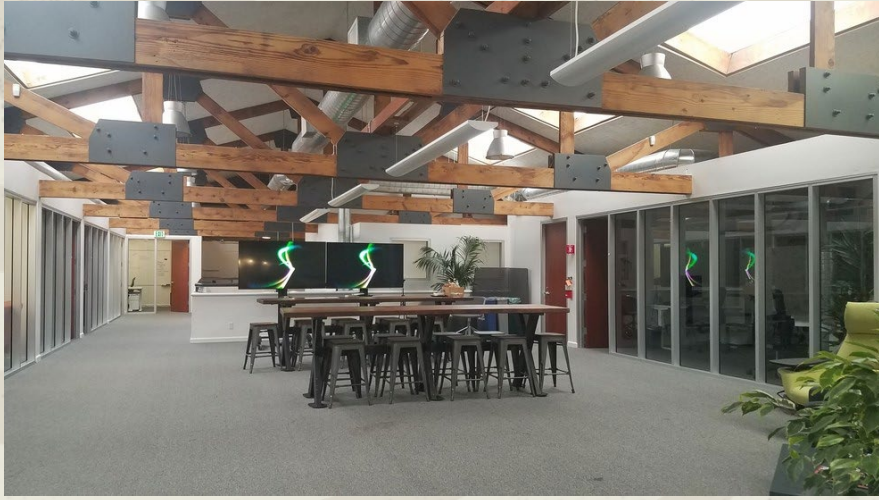


## FLOOR 2 - SEATING FOR APPROXIMATELY 20 PEOPLE



FOR LEASE  
745 EMERSON ST, PALO ALTO CA

# PROPERTY PHOTOS



FOR LEASE  
745 EMERSON ST, PALO ALTO CA

# PROPERTY EXTERIOR



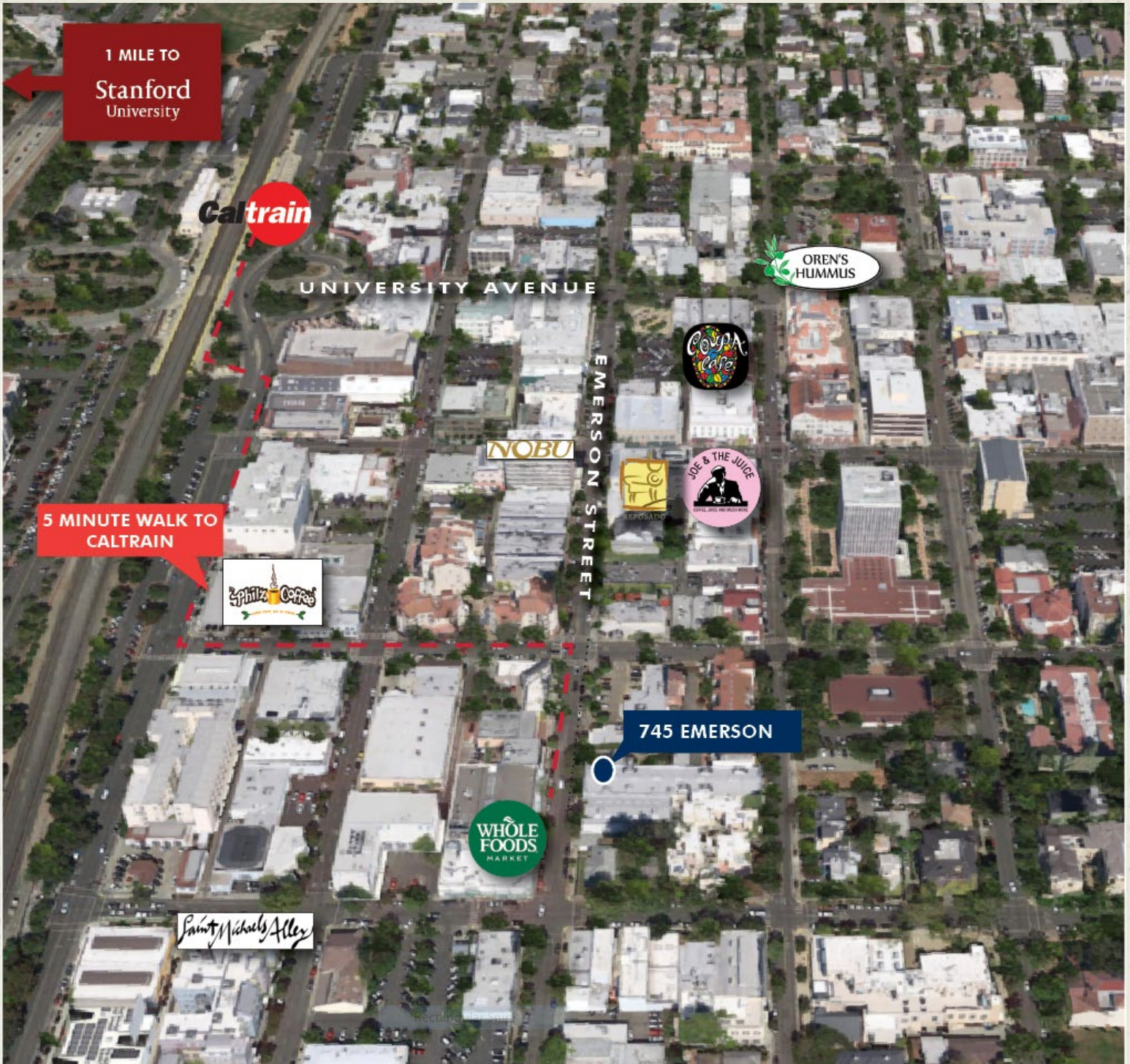
GARAGE ENTRANCE



GARAGE INTERIOR

**CBRE**

# AMENITIES MAP



**±8,898 SF OFFICE FOR LEASE**

**PALO ALTO | CALIFORNIA**

**745**

**Emerson Street**



**DAMON SCHOR**

Executive Vice President  
T +1 650 494 5121  
damon.schor@cbre.com  
Lic. 01317778

**WESTY ROSE**

Senior Associate  
+1 650 494 5166  
westy.rose@cbre.com  
Lic # 01980147

© 2024 CBRE, Inc. All rights reserved. This information has been obtained from sources believed reliable but has not been verified for accuracy or completeness. CBRE, Inc. makes no guarantee, representation or warranty and accepts no responsibility or liability as to the accuracy, completeness, or reliability of the information contained herein. You should conduct a careful, independent investigation of the property and verify all information. Any reliance on this information is solely at your own risk. CBRE and the CBRE logo are service marks of CBRE, Inc. All other marks displayed on this document are the property of their respective owners, and the use of such marks does not imply any affiliation with or endorsement of CBRE. Photos herein are the property of their respective owners. Use of these images without the express written consent of the owner is prohibited.

**CBRE**