

FOR LEASE

2-5 AC of Outdoor Storage



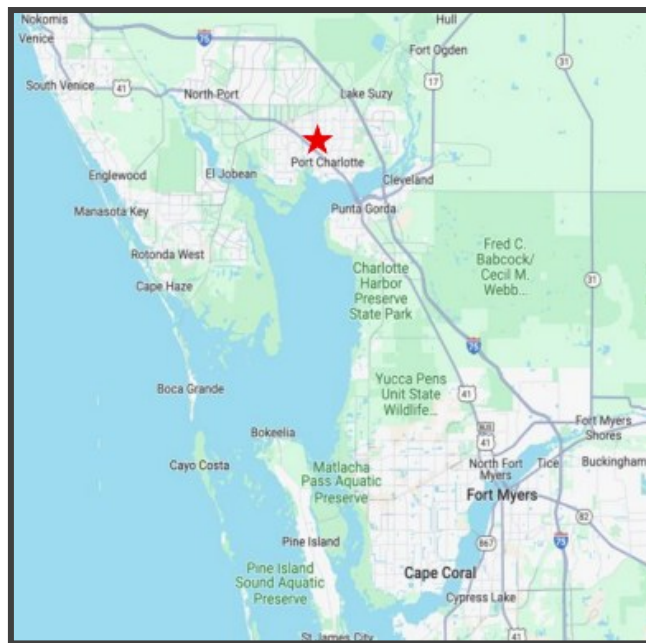
19500 Peachland Boulevard, Port Charlotte, FL 3348

- ◆ Mix of existing office, warehouse & outdoor storage
- ◆ Stabilized, fenced and secured yard with multiple points of entry
- ◆ Conveniently located in Port Charlotte off of Veterans Boulevard Between US 41 & Interstate 75
- ◆ Zoning: I1 (Industrial Intensive)

Click [here](#) for permitted uses

Lease Details:

- ◆ **Entire Site:** ± 5 AC with 3,800 sf of office/warehouse
 - ◆ \$32,500/mo. NNN
- ◆ **Option 1:** ± 3.06 AC with 3,800 sf of office/warehouse
 - ◆ \$25,000/mo. NNN
- ◆ **Option 2:** ± 1.87 AC of outdoor storage
 - ◆ \$8,500/mo. NNN

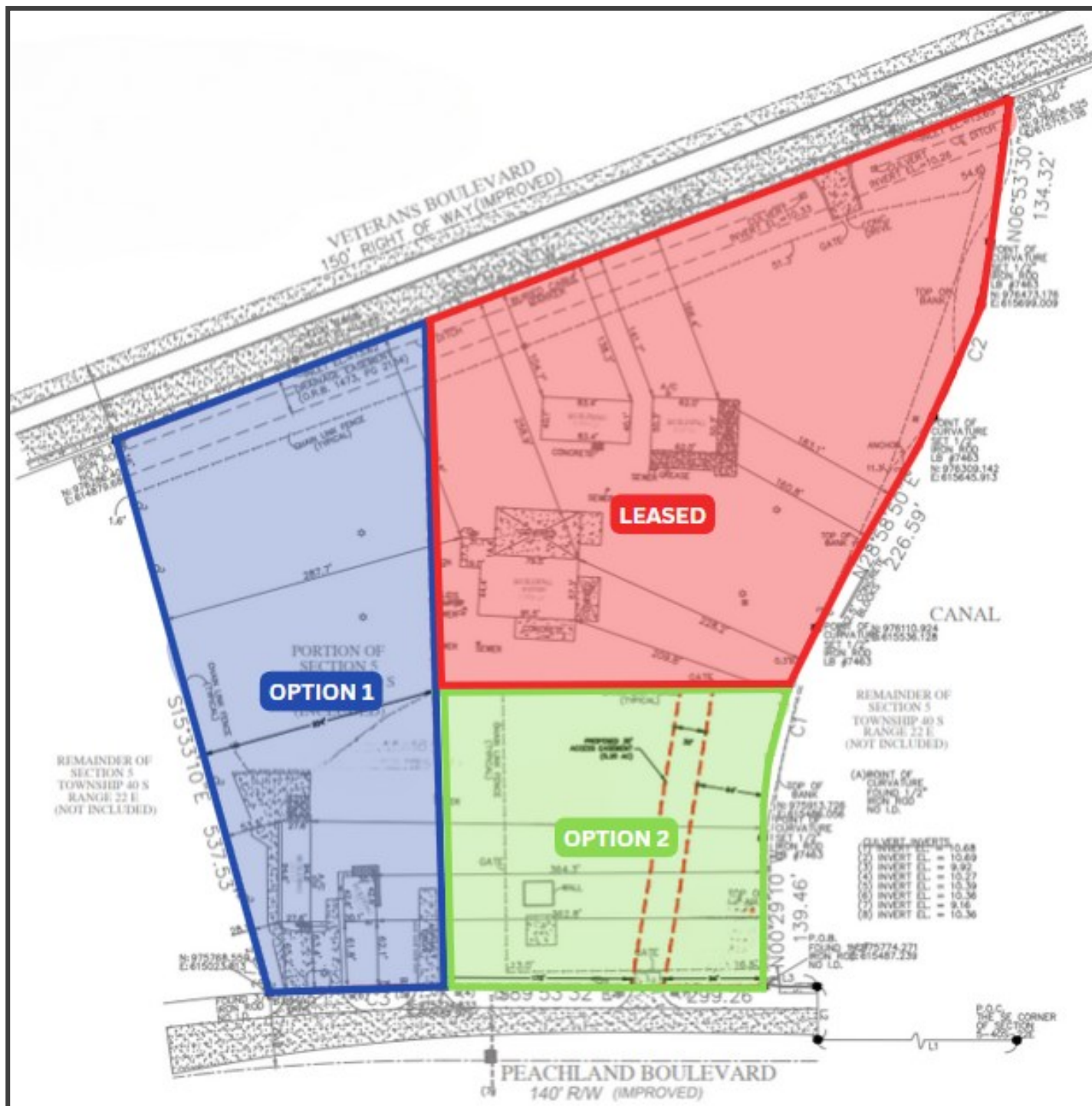


CORY KROEGER
Mobile: 407.402.8581
cory@kroegercommercial.com

WILSON McDOWELL
Park Industrial, LLC
Mobile: 407.592.4487
wilson@park-industrial.com

KROEGER & CO.
750 Jackson Ave #104 Winter Park, FL 32789
Phone: 407.696.3088
www.kroegercommercial.com

SITE PLAN



CORY KROEGER
Mobile: 407.402.8581
cory@kroegercommercial.com

WILSON McDOWELL
Park Industrial, LLC
Mobile: 407.592.4487
wilson@park-industrial.com

KROEGER & Co.
750 Jackson Ave #104 Winter Park, FL 32789
Phone: 407.696.3088
www.kroegercommercial.com

SURROUNDING USERS & AMENITIES



CORY KROEGER

Mobile: 407.402.8581
cory@kroegercommercial.com

WILSON MCDOWELL

Mobile: 407-592-4487
wilson@park-industrial.com

KROEGER & CO.

750 Jackson Ave #104 Winter Park, FL 32789
Phone: 407.696.3088 ·
www.kroegercommercial.com