



**WHERE PEOPLE & TEAMS THRIVE**

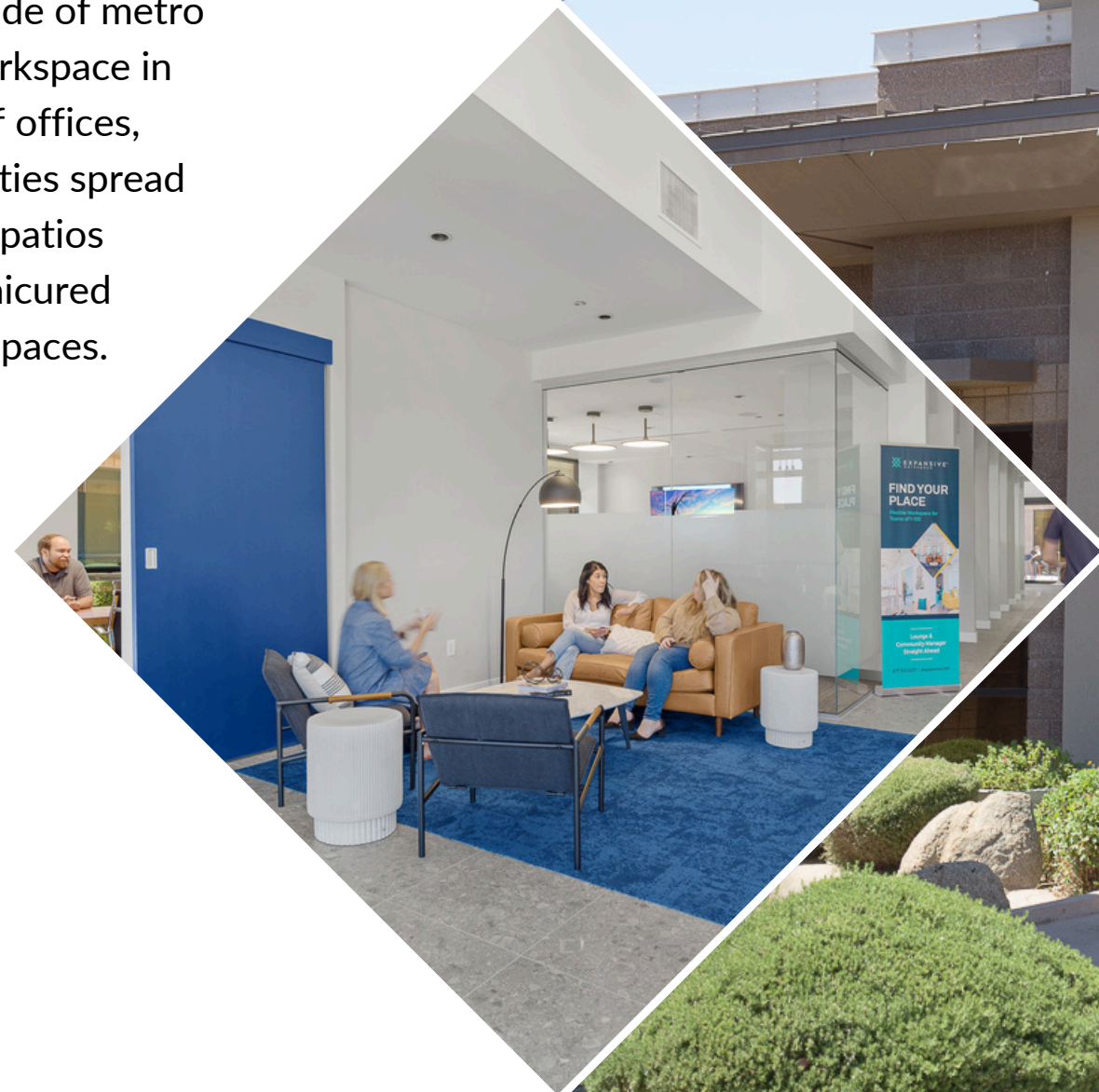
# Expansive Workspace Cooper Crossing

1820 E Ray Road, Chandler, AZ

This impressive five-acre complex in the suburb of Chandler, on the bustling southwestern side of metro Phoenix, was purpose-built as flexible workspace in 2006. It offers over 54,000 square feet of offices, SmartSuites®, meeting rooms, and amenities spread across six buildings and features outdoor patios including the Cleo Patio event space, manicured landscaping, and more than 300 parking spaces.

## Shared Amenities

- 3** Meeting Rooms
- 1** Event Venues
- 1** Phone Booths
- 1** Expansive Lounge



# Cooper Crossing

1820 E Ray Road, Chandler, AZ

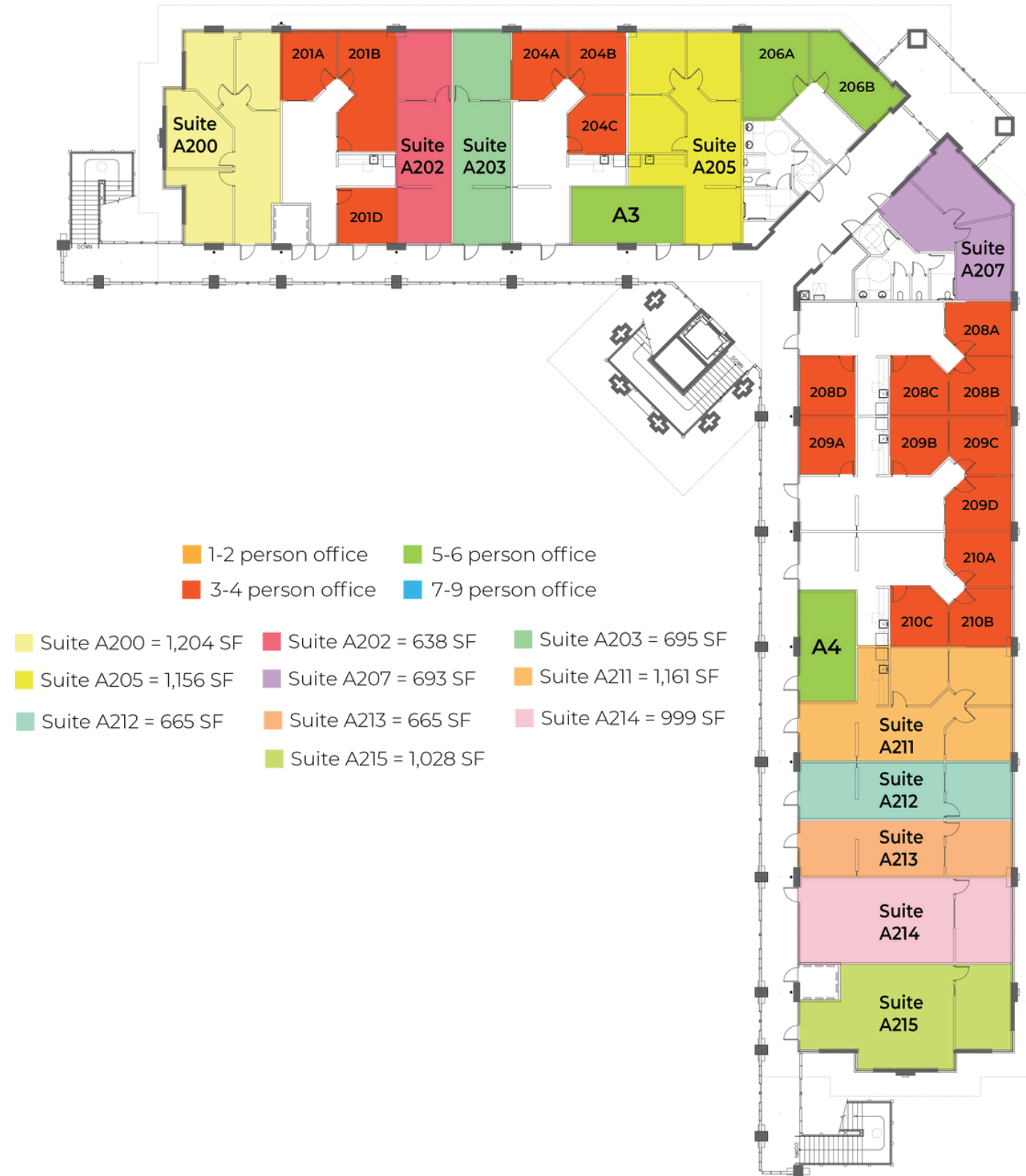
## BUILDING A - 1ST FLOOR



# Cooper Crossing

1820 E Ray Road, Chandler, AZ

**BUILDING A - 2ND FLOOR**



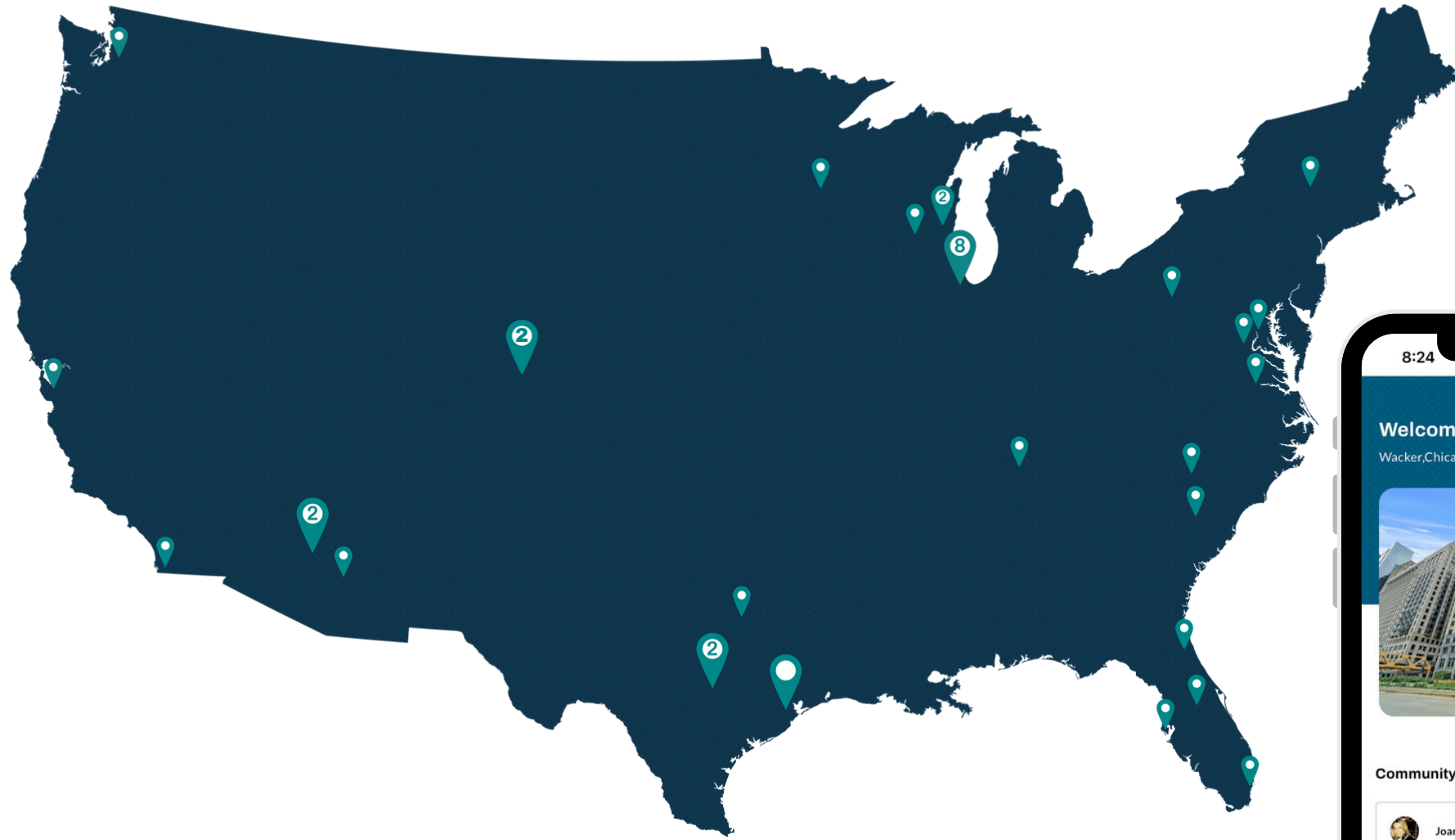
# Why Expansive?

At Expansive, we own the buildings we develop and operate. This allows us to share the incomparable advantages of a fully-integrated, nationwide property owner with our clients, including our four cornerstones of workspace success:

- 1 Maximum Productivity**  
To deliver on your potential
- 2 Vibrant Community**  
To foster community and build relationships
- 3 Unparalleled Flexibility**  
To realize your vision even as it evolves
- 4 Unwavering Stability**  
To establish confidence in an uncertain world

Membership Includes:

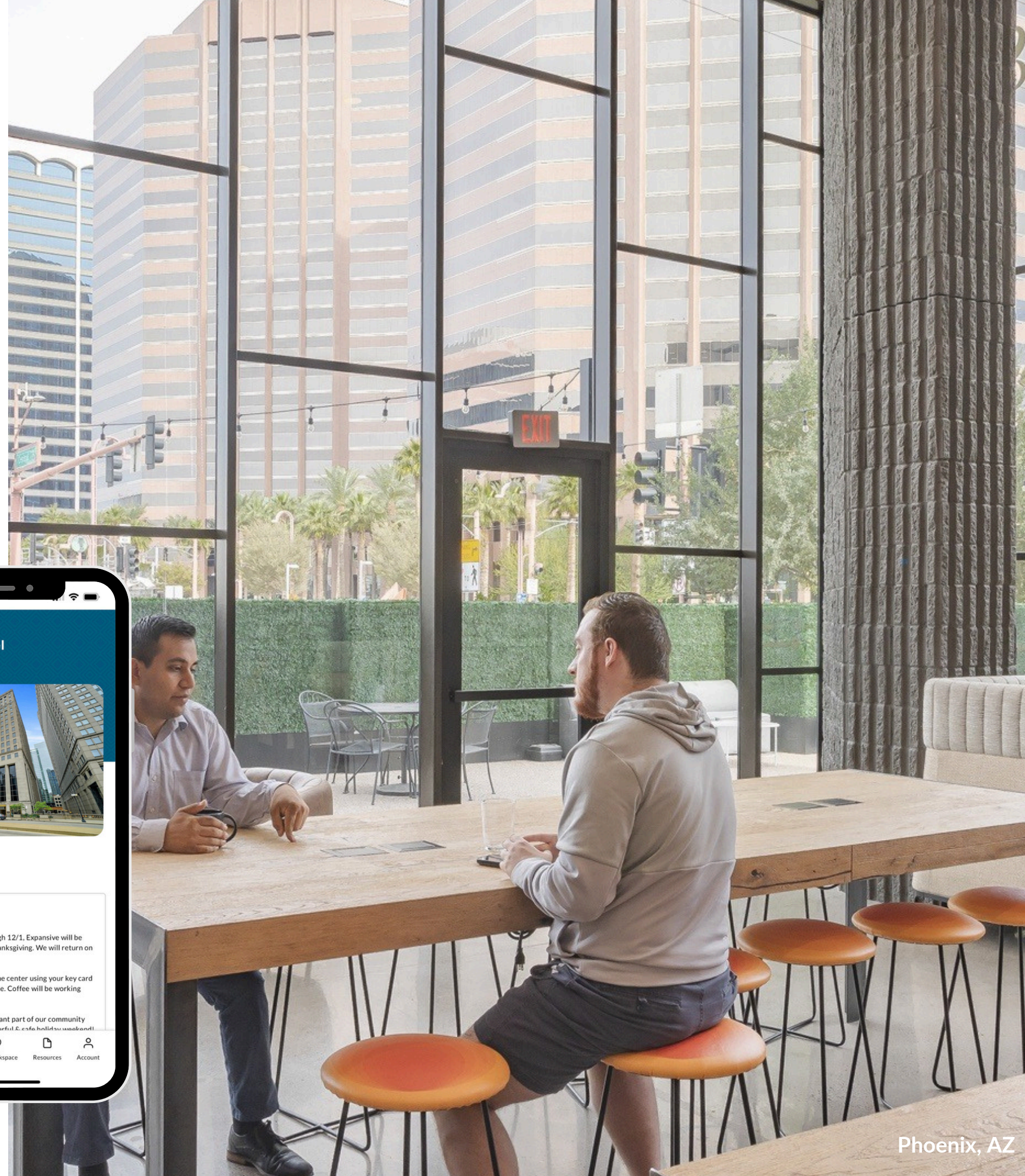
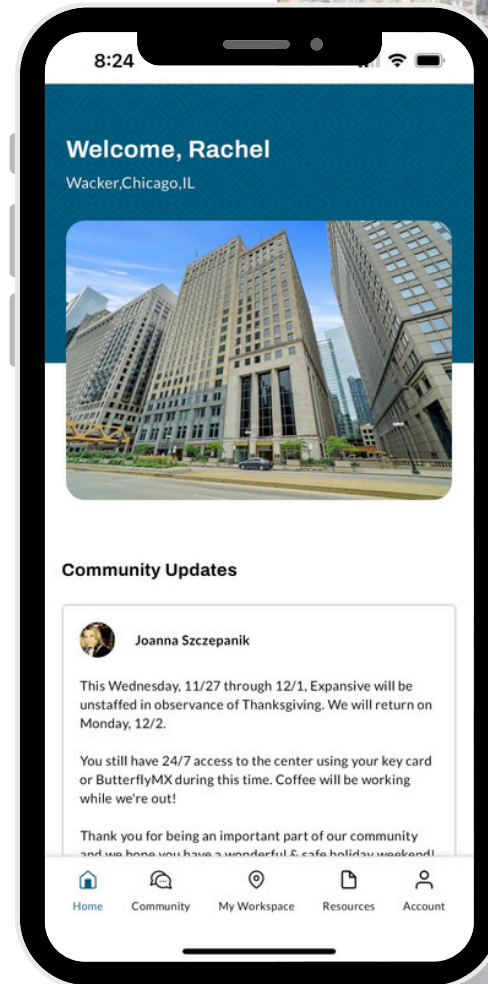
## Access to All Locations



**25+**  
Cities

**3.8M**  
SF

**40+**  
Locations



## Building Amenities



FULLY  
FURNISHED



DIRECT FIBER  
INTERNET & WIFI



EXPANSIVE  
LOUNGE



ESPRESSO  
BAR



ENHANCED  
CLEANING



SOCIALLY  
DISTANCED  
WORKSTATIONS



TOUCHLESS  
FAUCETS &  
RESTROOMS



UTILITIES



24/7 ACCESS



ON-SITE  
MGMT



HIGH SPEED  
PRINTERS



MEMBER  
DIRECTORY



MOTHERS'  
ROOM



COMMUNITY  
APP



BIKE ROOM



NETWORK  
LOUNGE ACCESS





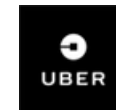
# Enterprise Clients We Serve



NETFLIX



The New York Times



HomeAway



monster<sup>®</sup>  
Find Better.™

AVAYA



coinbase



Aflac

Lenovo



WIPFLI  
CPAs and Consultants



# Workspace Options for Customized Solutions



[Learn More](#)



## Dedicated Space

- Team Suites
- Private Offices
- Access Pass



## Shared Space

- Dedicated Desk
- Coworking Membership



## On-Demand Space

- Conference Rooms
- Day Office
- Lounge Access



## Virtual Office

- Virtual Office

# Expansive Team Suites Provide Room to Grow

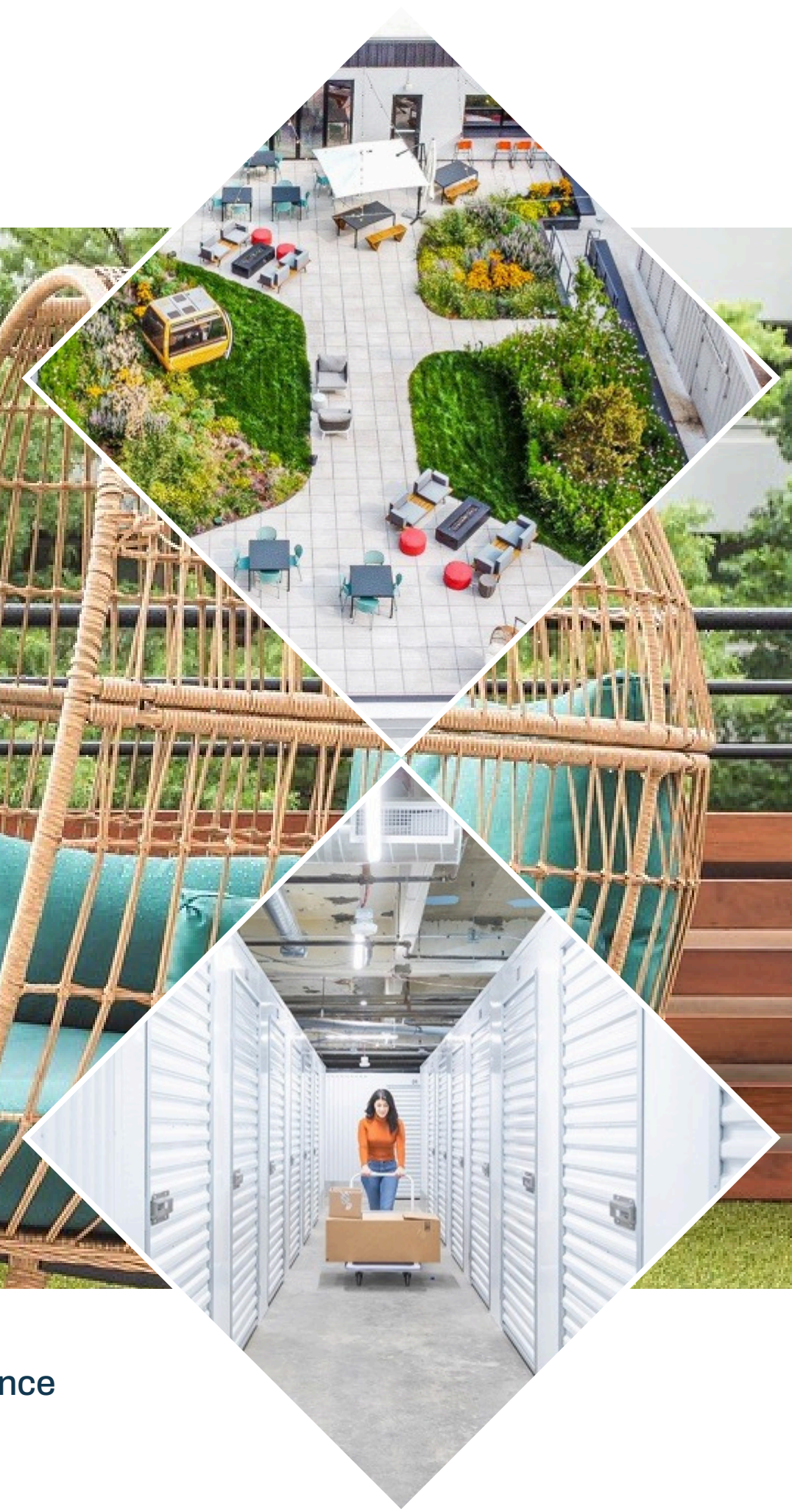
Multi-room Team Suites for 10 to 500 people are delivered fully furnished and move-in ready. Our in-house experts can help customize to meet specific needs. Team Suites feature open floor plans with:

- Dedicated kitchen with bar top seating
- A combination of open space and private offices
- Private conference room with smart TV monitor and blue board
- Turnkey technology package with high-speed fiber internet and Alexa-enabled sound system
- Biometric private entry to your suite and keyless building entry for secure 24/7 access
- And much more

[Learn More](#)



# Go Beyond Workspace



Many centers also offer additional service options for an end-to-end experience  
**Corporate Meeting & Event Space • Storage • Parking**

# What Happens Next?

We invite you to proceed in two simple steps.

## 1 Choose your solution

Act now to avoid disappointment. We operate on a first-come, first-served basis.

## 2 Easy online sign up

Once you've chosen your preference option, we'll send you a one-page agreement, which is just one click to sign.

Further questions? Please contact us if we haven't given you the right solution here. Talk to us. Other options are available.

**Contact Us:**

**[sales@expansive.com](mailto:sales@expansive.com) | 877.301.6217**