

# 9201 Pinecroft

51,769 RSF of Micro-Hospital  
and Medical Office Space

9201 Pinecroft Drive  
The Woodlands, TX 77380  
[www.cbre.com/properties](http://www.cbre.com/properties)

Available for Sublease



**First Floor Micro-Hospital:**  
**30,265 RSF**

**Second Floor Medical Office:**  
**21,504 RSF**

Available Immediately.  
Term through July 31, 2032

## Highlights

- + 2 Operating Rooms
- + Pre-Op and PACU Rooms
- + Imaging Center
- + 5 Inpatient Beds
- + Over 80+ Exam Rooms
- + Over 20 Nurses Stations
- + Full kitchen
- + Covered Patient Drop-Offs
- + Parking Ratio: 5.0 : 1,000 SF
- + Monument Signage Available



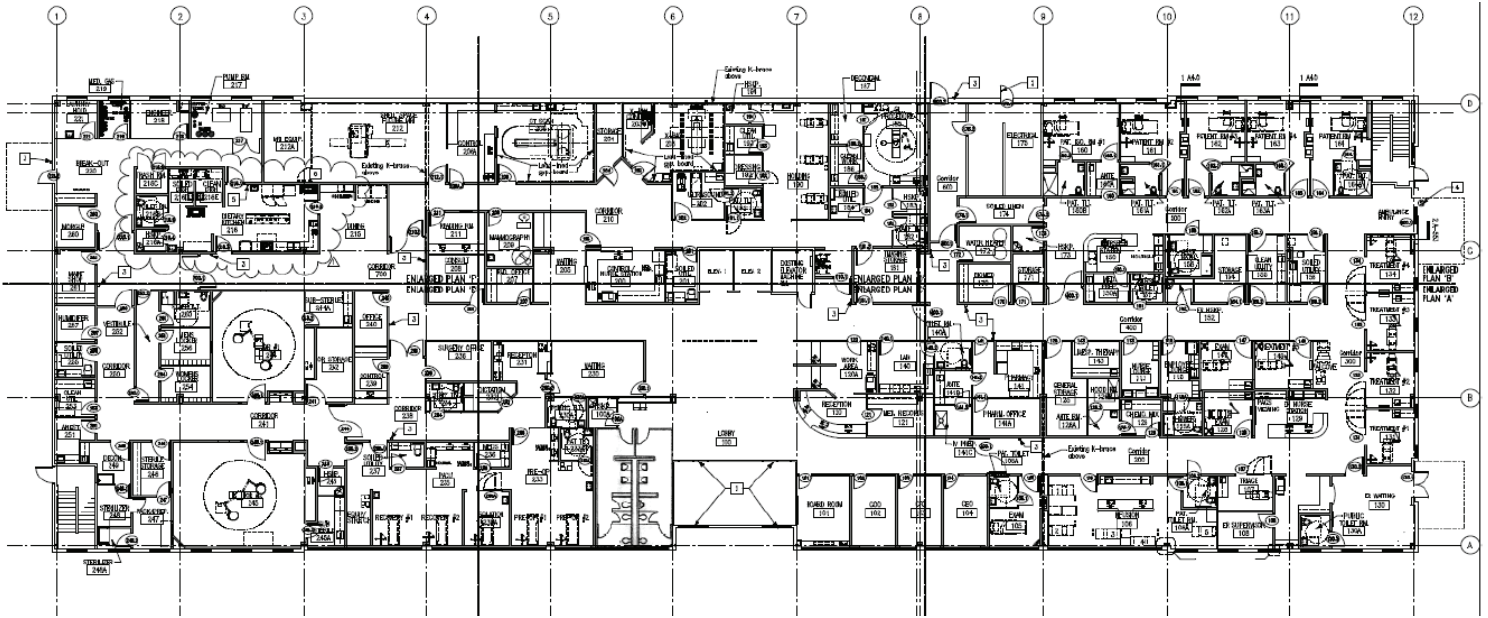
9201 Pinecroft

9201 Pinecroft Drive | The Woodlands, TX 77380

For Sublease

Max Contiguous Space Available: 51,769 RSF

First Floor Micro-Hospital: 30,265 RSF



Second Floor Remaining Medical Office: 21,504 RSF



## Contact Us

Angela Barber

Vice President

+1 832 455 6945

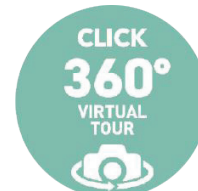
angela.barber@cbre.com

Danielle Parsons

Associate

+1 713 907 8905

danielle.parsons@cbre.com



1st Floor



2nd Floor

© 2025 CBRE, Inc. All rights reserved. This information has been obtained from sources believed reliable, but has not been verified for accuracy or completeness. You should conduct a careful, independent investigation of the property and verify all information. Any reliance on this information is solely at your own risk. CBRE and the CBRE logo are service marks of CBRE, Inc. All other marks displayed on this document are the property of their respective owners, and the use of such logos does not imply any affiliation with or endorsement of CBRE. Photos herein are the property of their respective owners. Use of these images without the express written consent of the owner is prohibited.

[www.cbre.com/properties](http://www.cbre.com/properties)

**CBRE**