



For Lease

549 N Wymore Road
Maitland, FL 32751

884 SF & 1,281 SF available

 **JLL** SEE A BRIGHTER WAY

Property Highlights



Two-story office building built in 2001



Conveniently situated in Maitland just off Maitland Blvd and I-4



2 Suites available for lease



On-site ownership and management



Ample free parking surrounding building



\$28.00/SF Modified Gross

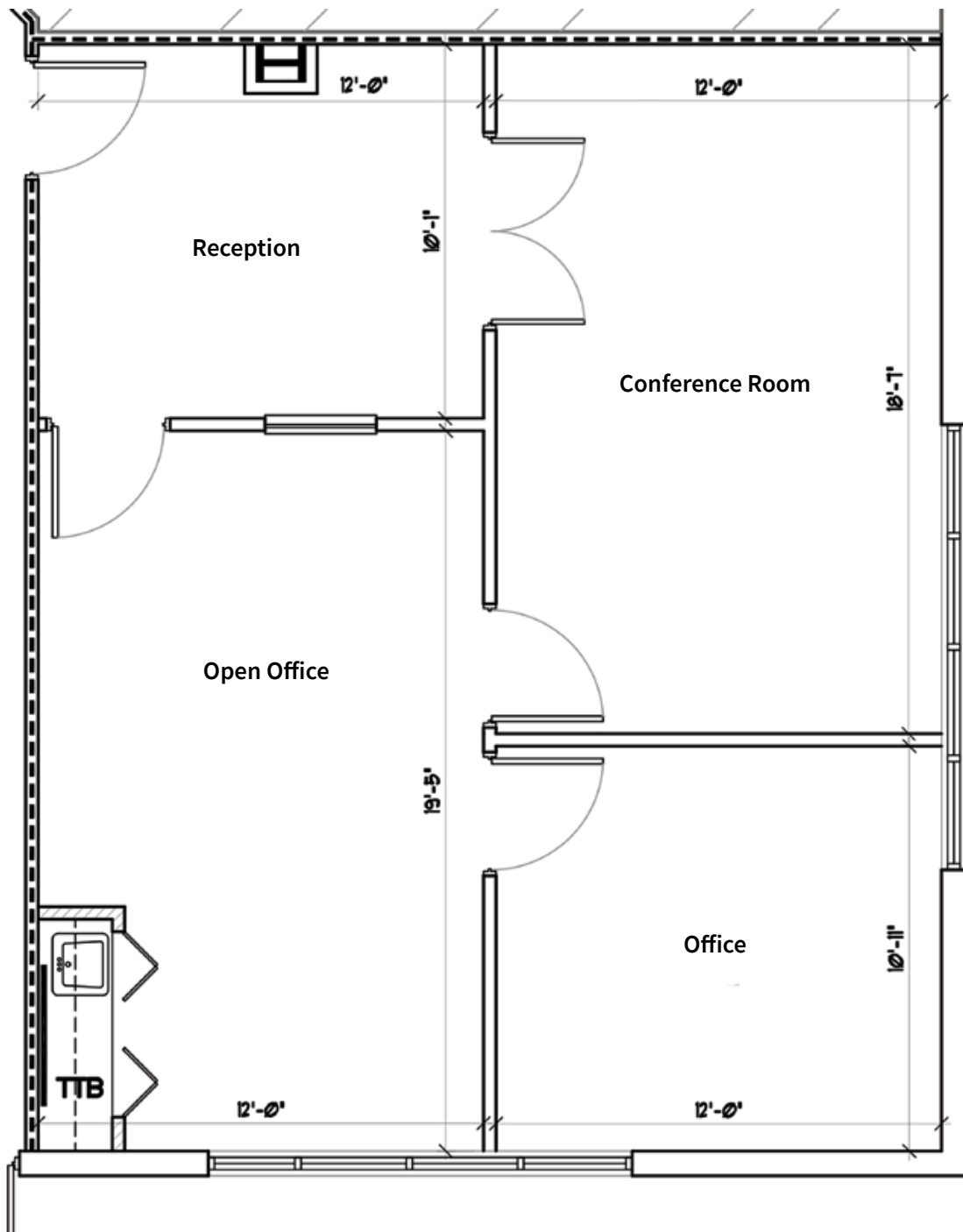


Available immediately



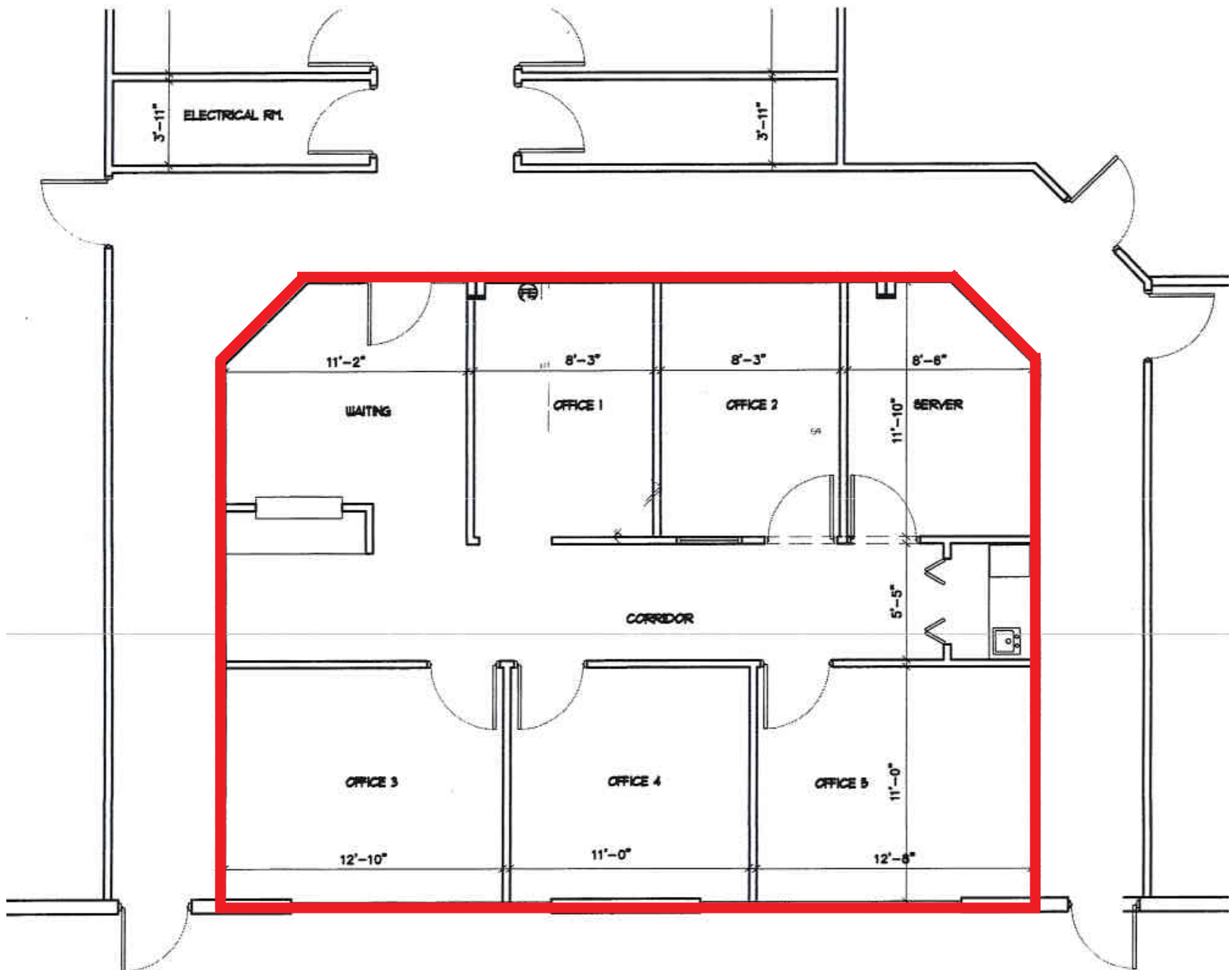
Floorplan

Suite 109: ± 884 SF



Floorplan

Suite 207: ± 1,281 SF



Location Highlights



- Convenient access to Interstate 4 with new ramps recently completed as part of the I-4 Ultimate Project
- Close proximity to restaurants and RDV Sportsplex

JLL.com

John Worrell, CCIM

Senior Vice President

john.worrell@jll.com

+1 321 684 9240

Jamie Barati, SIOR, CCIM

Senior Vice President

jamie.barati@jll.com

+1 407 930 1803

Although information has been obtained from sources deemed reliable, neither Owner nor JLL makes any guarantees, warranties or representations, express or implied, as to the completeness or accuracy as to the information contained herein. Any projections, opinions, assumptions or estimates used are for example only. There may be differences between projected and actual results, and those differences may be material. The Property may be withdrawn without notice. Neither Owner nor JLL accepts any liability for any loss or damage suffered by any party resulting from reliance on this information. If the recipient of this information has signed a confidentiality agreement regarding this matter, this information is subject to the terms of that agreement. ©2026 Jones Lang LaSalle IP, Inc. All rights reserved.