



## Commercial Office Park I & II

4610 - 4704 W Commercial Drive  
North Little Rock, AR

### DAVID HATHAWAY

DIRECT: 501.978.4977 CELL: 501.529.4868  
David@HathawayGroup.com

### JAMES CLAYTON

DIRECT: 501.978.4968 CELL: 479.650.9250  
James@HathawayGroup.com



## FOR LEASE:

**\$14.50/SF + Janitorial**

### Overview:

- Good access from Warden Road to West Commercial Drive. There is also great access to and from Interstate 57.
- West Commercial Drive signage available
- Conveniently park in front of your suite

### AVAILABLE SUITES:

Address	Suite	Rentable SF
4700 W. Commercial Dr.	B2	875
4704 W. Commercial Dr.	B	3,000

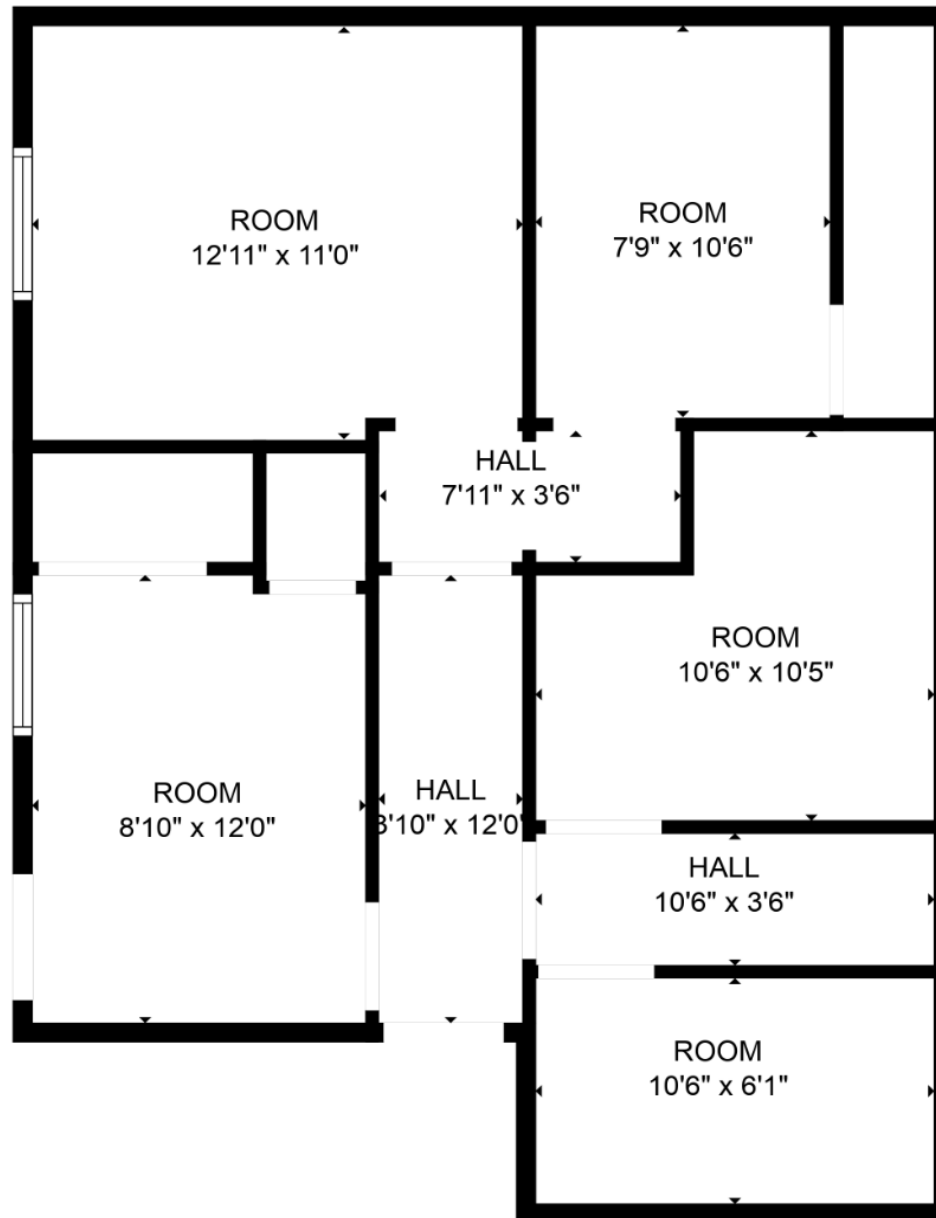




4700 W. Commercial Dr.

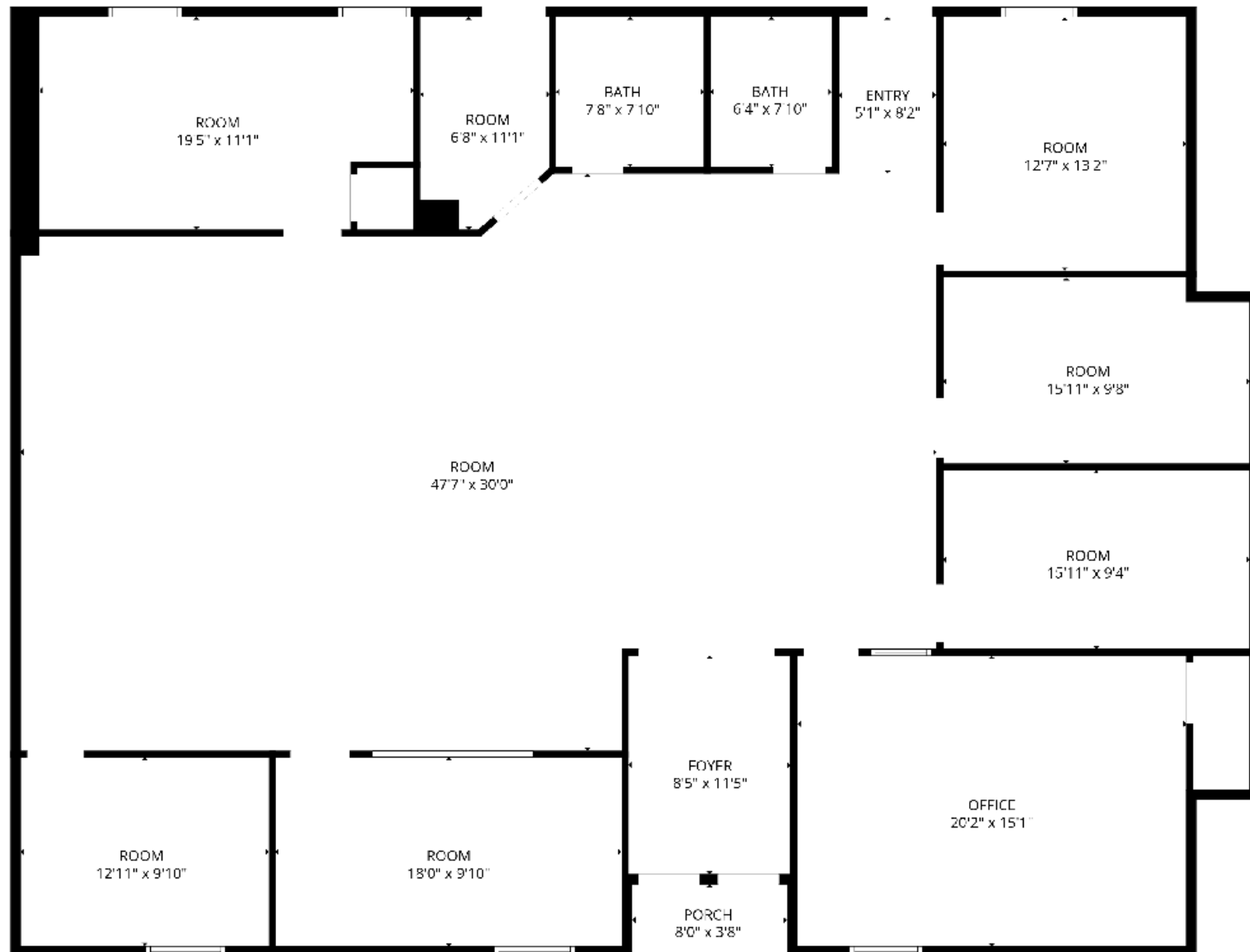
Suite B2

875 SF





4704 W. Commercial Dr. Ste. B — 3,000 SF



**4704 W. Commercial Dr. Ste. B — 3,000 SF**





