

24231-24241 JOHN R ROAD  
HAZEL PARK, MICHIGAN

INDUSTRIAL / RETAIL FOR SALE  
13,486 Square Feet Available



**SIGNATURE  
ASSOCIATES**  
KNOW SIGNATURE | KNOW RESULTS



## PROPERTY FEATURES

- 13,486 square feet available
- 2,814 square feet office
- 18' – 21' clear height
- (5) 12' x 12' grade level doors
- Well-maintained property, perfect for a contractor
- Zoned FC Flex Corridor
- Ample on-site parking and access
- Pull thru capability
- Seller will have an auction for equipment soon
- Sale Price: \$1,075,000 (\$79.71/sq. ft.)



For more information, please contact:

**PETER VANDERKAAY**  
(248) 359 3837  
pvanderkaay@signatureassociates.com

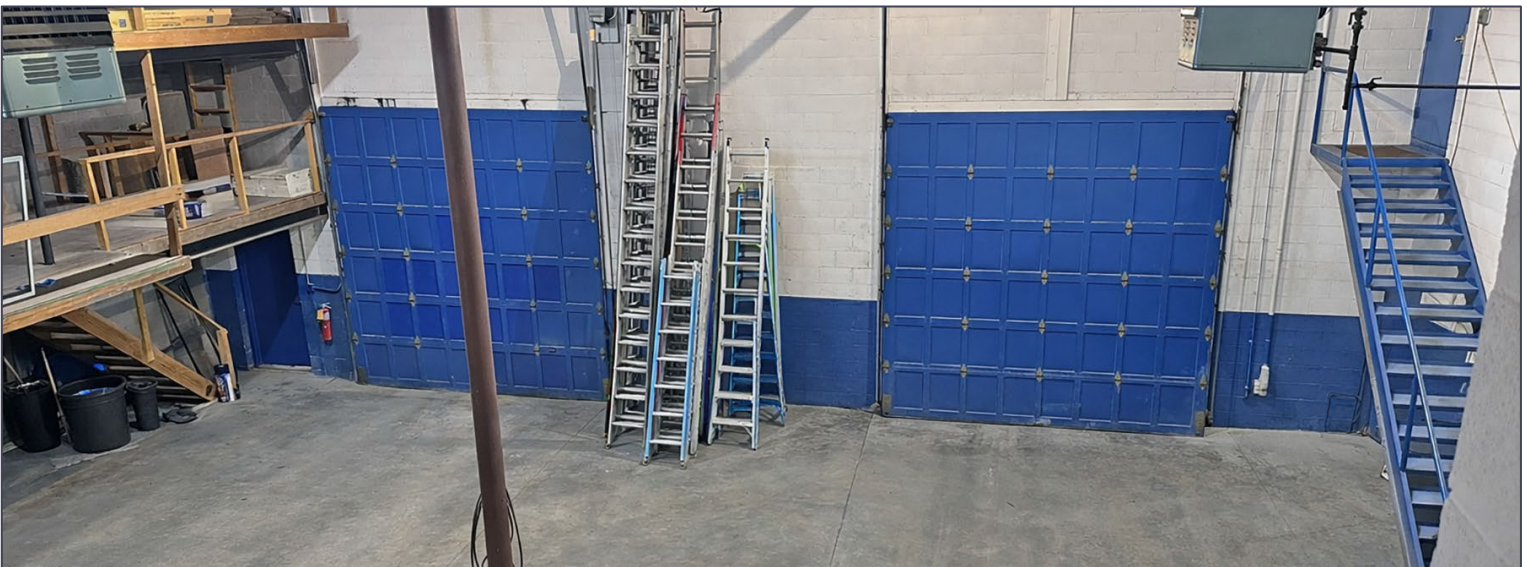
**JOE PLASKEY**  
(248) 948 0110  
jplaskey@signatureassociates.com

**SIGNATURE ASSOCIATES**  
One Towne Square, Suite 1200  
Southfield, MI 48076  
www.signatureassociates.com

# 24231 – 24241 John R Road – Hazel Park, Michigan

Industrial / Retail For Sale

13,486  
Square Feet  
AVAILABLE



For more information, please contact:

**PETER VANDERKAAY**  
(248) 359 3837  
pvanderkaay@signatureassociates.com

**JOE PLASKEY**  
(248) 948 0110  
jplaskey@signatureassociates.com

**SIGNATURE ASSOCIATES**  
One Towne Square, Suite 1200  
Southfield, MI 48076  
www.signatureassociates.com

# 24231 – 24241 John R Road – Hazel Park, Michigan

Industrial / Retail For Sale

13,486  
Square Feet  
AVAILABLE

## Site Plan



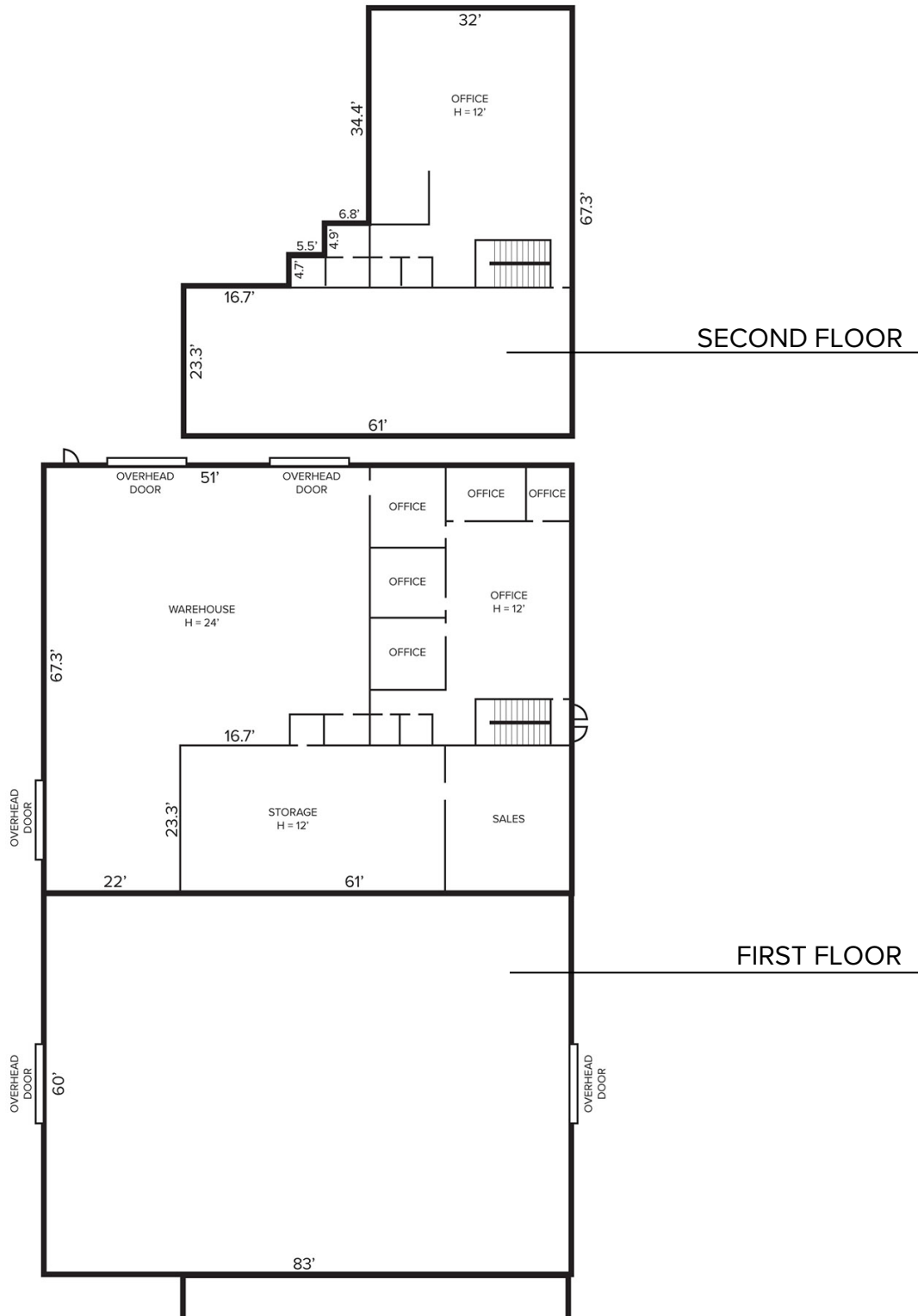
For more information, please contact:

**PETER VANDERKAAY**  
(248) 359 3837  
pvanderkaay@signatureassociates.com

**JOE PLASKEY**  
(248) 948 0110  
jplaskey@signatureassociates.com

**SIGNATURE ASSOCIATES**  
One Towne Square, Suite 1200  
Southfield, MI 48076  
www.signatureassociates.com

Floor Plan



For more information, please contact:

**PETER VANDERKAAY**  
(248) 359 3837  
pvanderkaay@signatureassociates.com

**JOE PLASKEY**  
(248) 948 0110  
jplaskey@signatureassociates.com

**SIGNATURE ASSOCIATES**  
One Towne Square, Suite 1200  
Southfield, MI 48076  
www.signatureassociates.com

# 24231 – 24241 John R Road – Hazel Park, Michigan

## Industrial / Retail For Sale

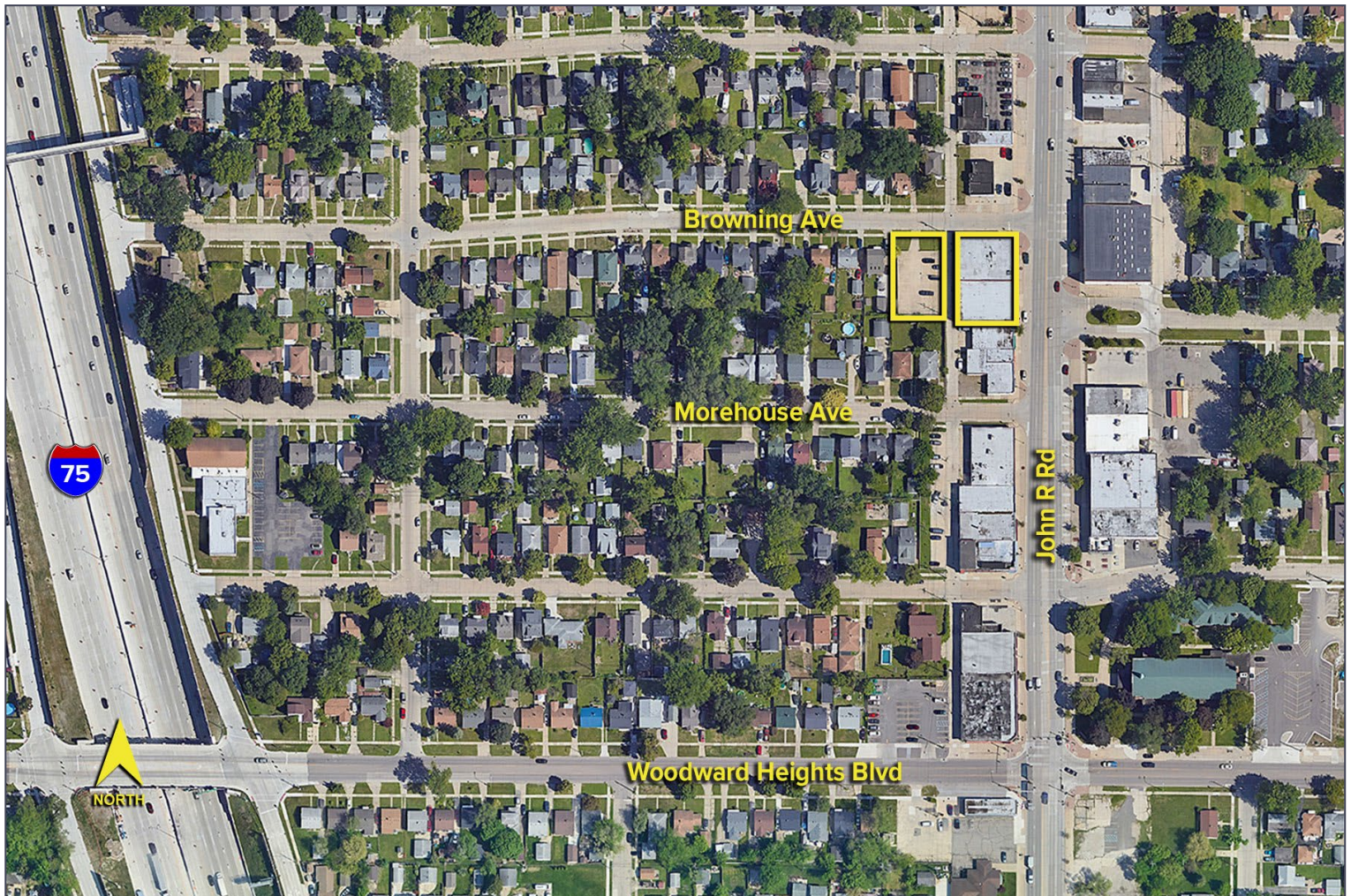
13,486  
Square Feet  
AVAILABLE

### DEMOGRAPHICS

	POPULATION	MED. HH INCOME
1 MILE	16,407	\$69,925
3 MILE	137,737	\$80,497
5 MILE	371,156	\$74,089

### TRAFFIC COUNTS (TWO-WAY)

11,624	John R Rd. S of I-696
12,507	John R Rd. N of I-696
139,112	I-696 W of John R Rd.
201,552	I-696 E of John R Rd.



For more information, please contact:

**PETER VANDERKAAY**  
(248) 359 3837  
pvanderkaay@signatureassociates.com

**JOE PLASKEY**  
(248) 948 0110  
jplaskey@signatureassociates.com

**SIGNATURE ASSOCIATES**  
One Towne Square, Suite 1200  
Southfield, MI 48076  
www.signatureassociates.com