

DIEHL POINT

27755 & 27775 DIEHL ROAD



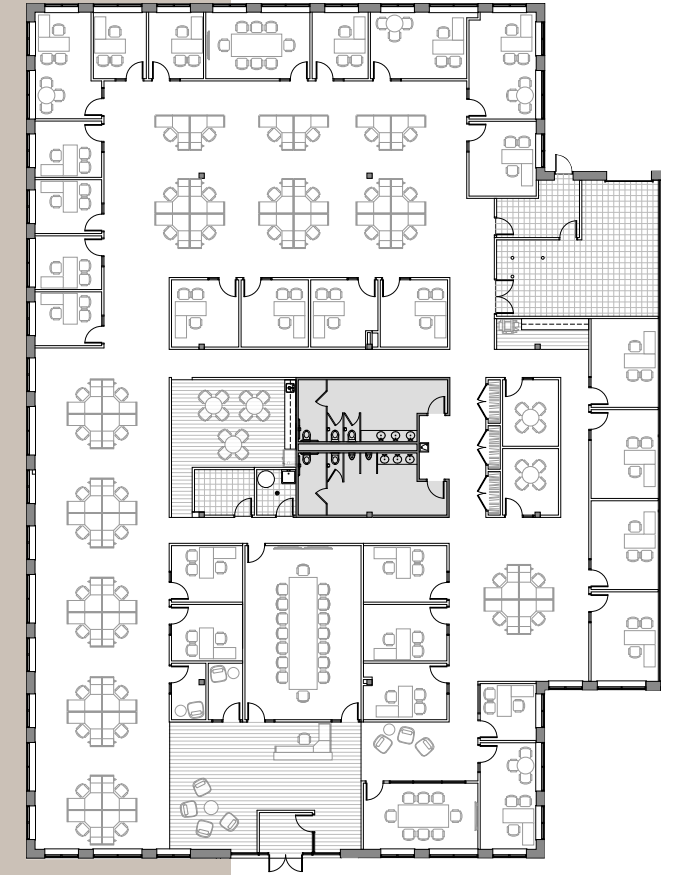
CONTROLLED
ACCESS
CONVENIENT
LOCATION

Combining a prime location near I-88 and its strategic pricing, the buildings offer both convenience and affordability.

CONCEPTUAL SUITE 300
15,906 RSF

Available June 2025

- End cap unit provides abundant natural light
- Full HVAC control for 24-hour operations
- One drive-in door
- 4.5/1000 parking
- Flexible layout options



DIEHL POINT
27755 & 27775 DIEHL ROAD



DIEHL POINT
27755 & 27775 DIEHL ROAD

WELL-CAPITALIZED
AND RELIABLE

OWNERSHIP

BA BRADFORD
ALLEN

As local owners, Bradford Allen believes in the importance of continuously investing in our properties to ensure tenants are given the necessary resources to succeed.

Our hands-on approach promises close collaboration and a truly best-in-class leasing experience, featuring free space planning services, a transparent deal process, building-assisted construction process with fast, reasonable negotiations.

“PROVIDING EXCEPTIONAL
TENANT SERVICE IS THE
FOUNDATION OF OUR BRAND.”

Properties owned and managed by Bradford Allen:

TRI STATE
LINCOLNSHIRE

EDENS
CORPORATE CENTER
AT DUNDEE & SKOKIE

POINTE
O'HARE

1400
EAST TOUHY
DES PLAINES

3333
FINLEY POINT
DOWNERS GROVE

570
LAKE COOK ROAD

ArlingtonMed

501
W. LAKE STREET
elmhurst

350
E. 22ND STREET
lombard

NORM MURDOCH

630 239 4082

nmurdoch@bradfordallen.com

DIEHL POINT

leased, owned + managed by

BA BRADFORD
ALLEN

bradfordallen.com

© 2024 Bradford Allen. All rights reserved.

The information contained herein has been obtained from sources deemed to be reliable; however, it has not been independently verified, and no warranties, express or implied, are made as to the accuracy thereof. Any projections, opinions, assumptions, or estimates used are for example only and do not represent the current or future performance of the property. You and your advisors should conduct a thorough, independent investigation of the property to determine to your satisfaction the suitability of the property for your needs.