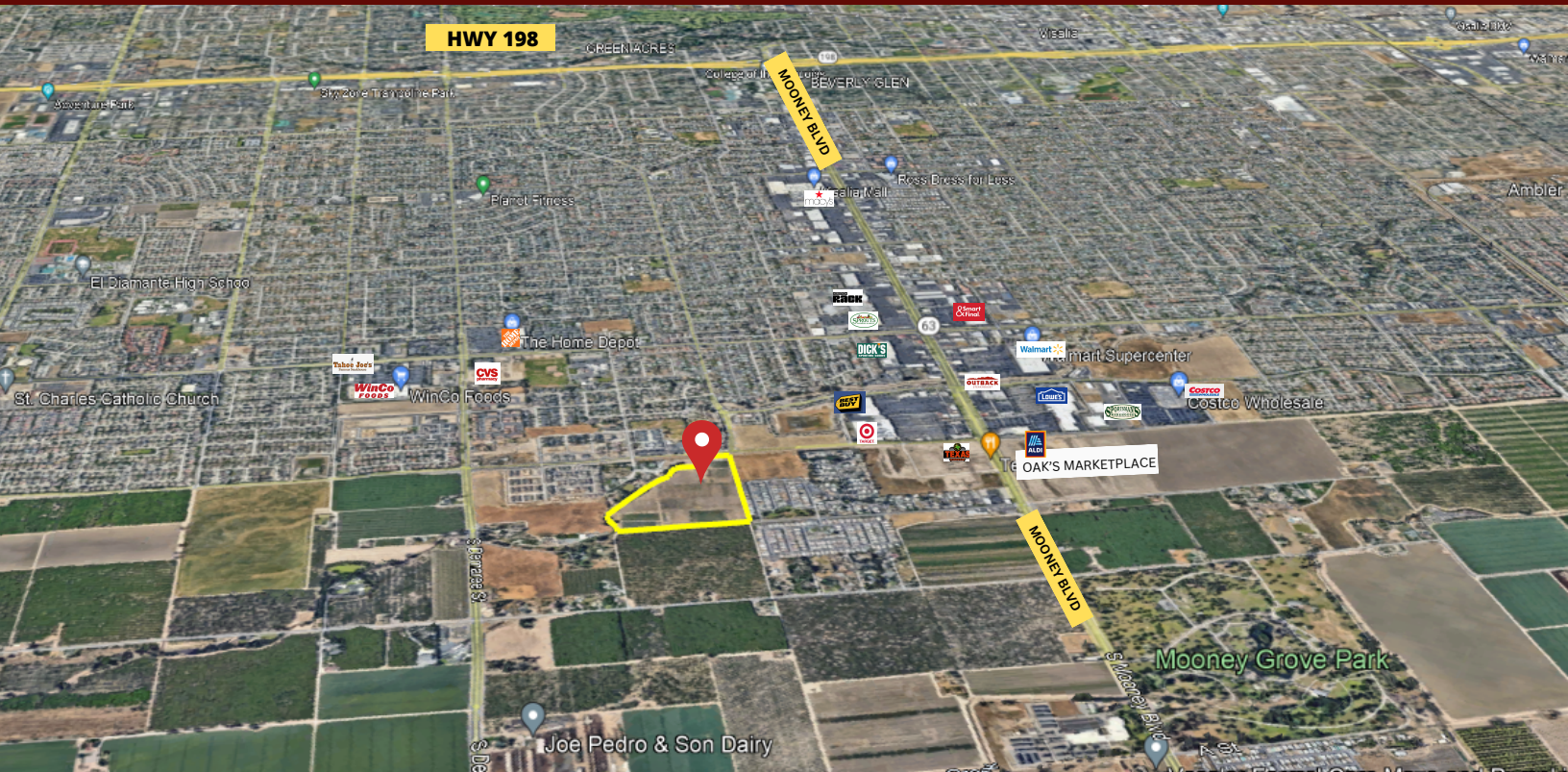


INVESTMENT/DEVELOPMENT OPPORTUNITY

29.79 Acres of Vacant Land

Visalia Parkway & County Center Drive
Visalia, Tulare County, California

- **Nearby: Target, Best Buy, Costco, Texas Roadhouse, Lowe's, Sportsmans Warehouse, Smart N Final, Walmart Supercenter, Dick's Sporting Goods, CottonCreek Elementary School**
- **Newly Developed: Aldi's, Sprouts, Barnes & Noble, Nordstrom Rack, Cane's, Dave's Hot Chicken**
- **Under Development : Oak's Marketplace**



WAYNE MILLIES #01783454
Wayne@Equitygroupinc.com
(559) 289-8551

JASON RITCHIE #01948820
Jason@Equitygroupinc.com
(559) 343-3049

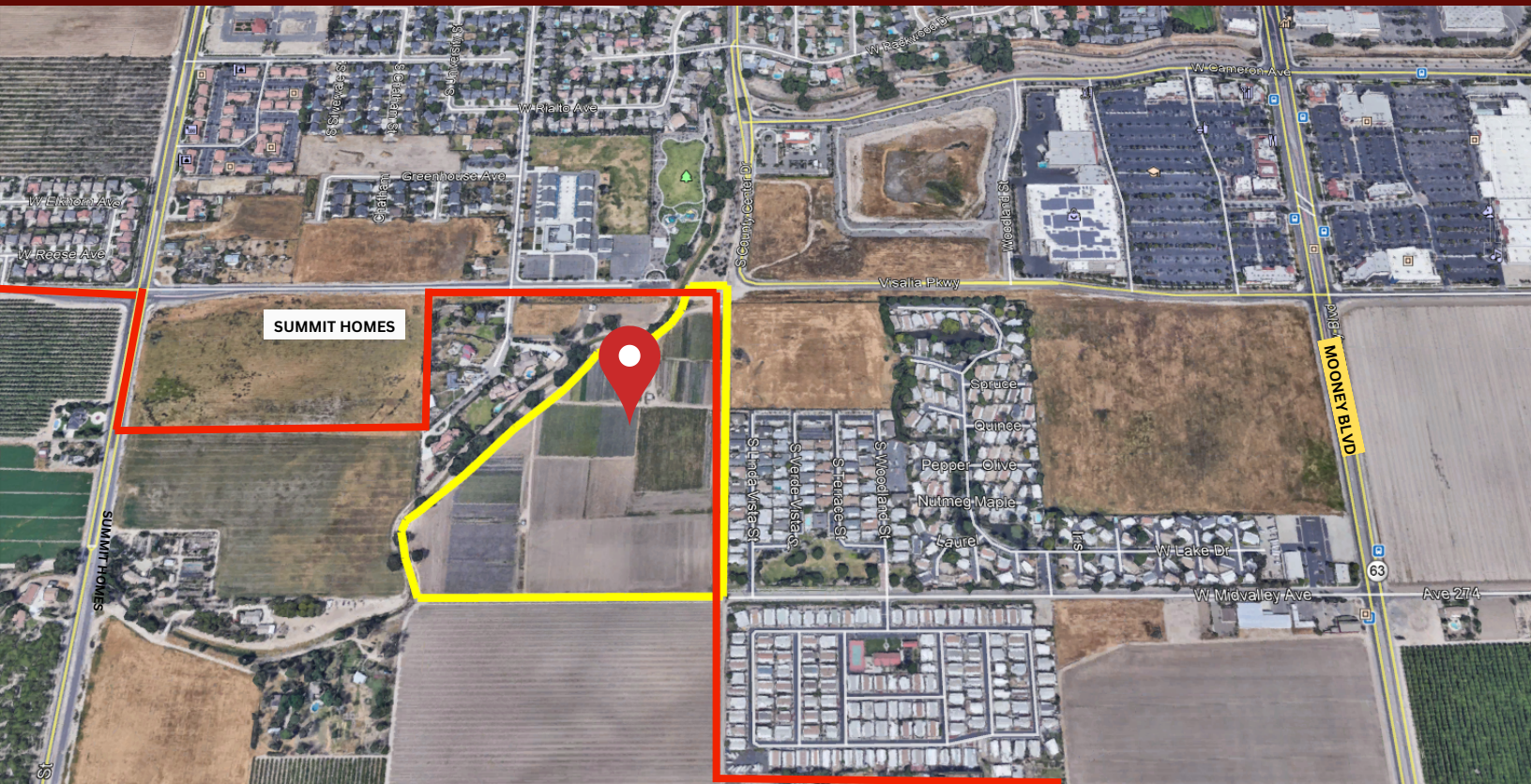
KIMBERLY CURTIS #02115335
Kim@Equitygroupinc.com
(559) 859-8791

EQUITY
GROUP
COMMERCIAL REAL ESTATE

INVESTMENT/DEVELOPMENT OPPORTUNITY

29.79 Acres of Vacant Land

Visalia Parkway & County Center Drive
Visalia, Tulare County, California



- **APN# 121-610-001**
- **Tulare County (Contiguous to City Boundary)**
- **Suitable For: Single or Multi-Family Development**
- **Adjacent to 15-Acre Summit Homes Subdivision**
- **On Major East/West Arterial (Visalia Parkway)**

EQUITY
GROUP

COMMERCIAL REAL ESTATE

\$ 2,532,000

\$85,000/per Acre