

# THE SHOPS AT VINEYARD VILLAGE

SEQ OF GLADE & SH 121, EULESS, TEXAS

SHOP <sup>COS.</sup>



*Thomas Glendenning* / [THOMAS@SHOPCOMPANIES.COM](mailto:THOMAS@SHOPCOMPANIES.COM) / 214-960-4528

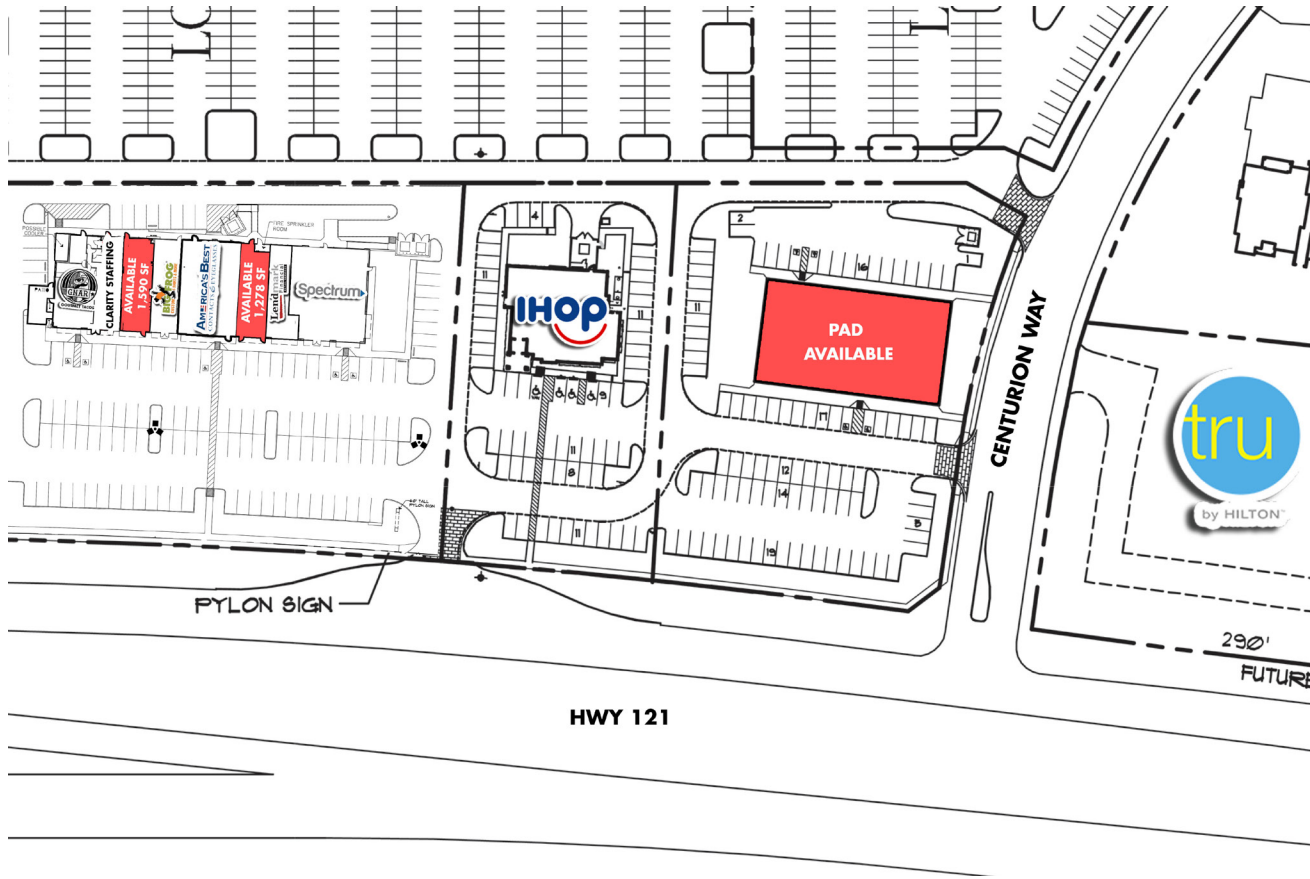
*Jake Sherrington* / [JAKE@SHOPCOMPANIES.COM](mailto:JAKE@SHOPCOMPANIES.COM) / 214-960-4623

The information contained herein was obtained from sources deemed reliable; however, no guarantees, warranties or representations as to the completeness or accuracy thereof. The presentation of this real estate information is subject to errors; omissions; change of price; prior sale or lease; or withdrawal without notice.

# THE SHOPS AT VINEYARD VILLAGE

SEQ OF GLADE & SH 121, EULESS, TEXAS

SHOP <sup>COS.</sup>



## PROJECT SCOPE

The Shops at Vineyard Village, a super-regional intersection in DFW is located in southeast Tarrant county at SH 121 and Glade road. The recent spur in area development including retail, new single family and multifamily housing add to the areas dense population as it is a shopping destination for Hurst, Euless, Bedford, Grapevine and Colleyville. Area retailers include Bed, Bath & Beyond, L.A. Fitness, ROSS, Marshall's, Staples, Lowe's, PetSmart, Dave & Busters and many more.

## DETAILS

- 1,278 SF and 1,590 SF Available
- Pad Available

## TRAFFIC COUNTS

o SH 121:	105,369 VPD-18
o Glade:	25,999 VPD-14

## AREA ATTRACTIONS



## DEMOGRAPHICS

	1 mile	3 mile	5 mile
Est. Population	13,853	93,268	204,054
Avg. HH Income	\$148,499	\$115,204	\$110,916
Total Housing Units	5,295	37,795	82,255
Daytime Population	12,280	73,661	244,470
Medium Home Value	\$318,603	\$281,899	\$272,438

Thomas Glendenning / THOMAS@SHOPCOMPANIES.COM / 214-960-4528

Jake Sherrington / JAKE@SHOPCOMPANIES.COM / 214-960-4623

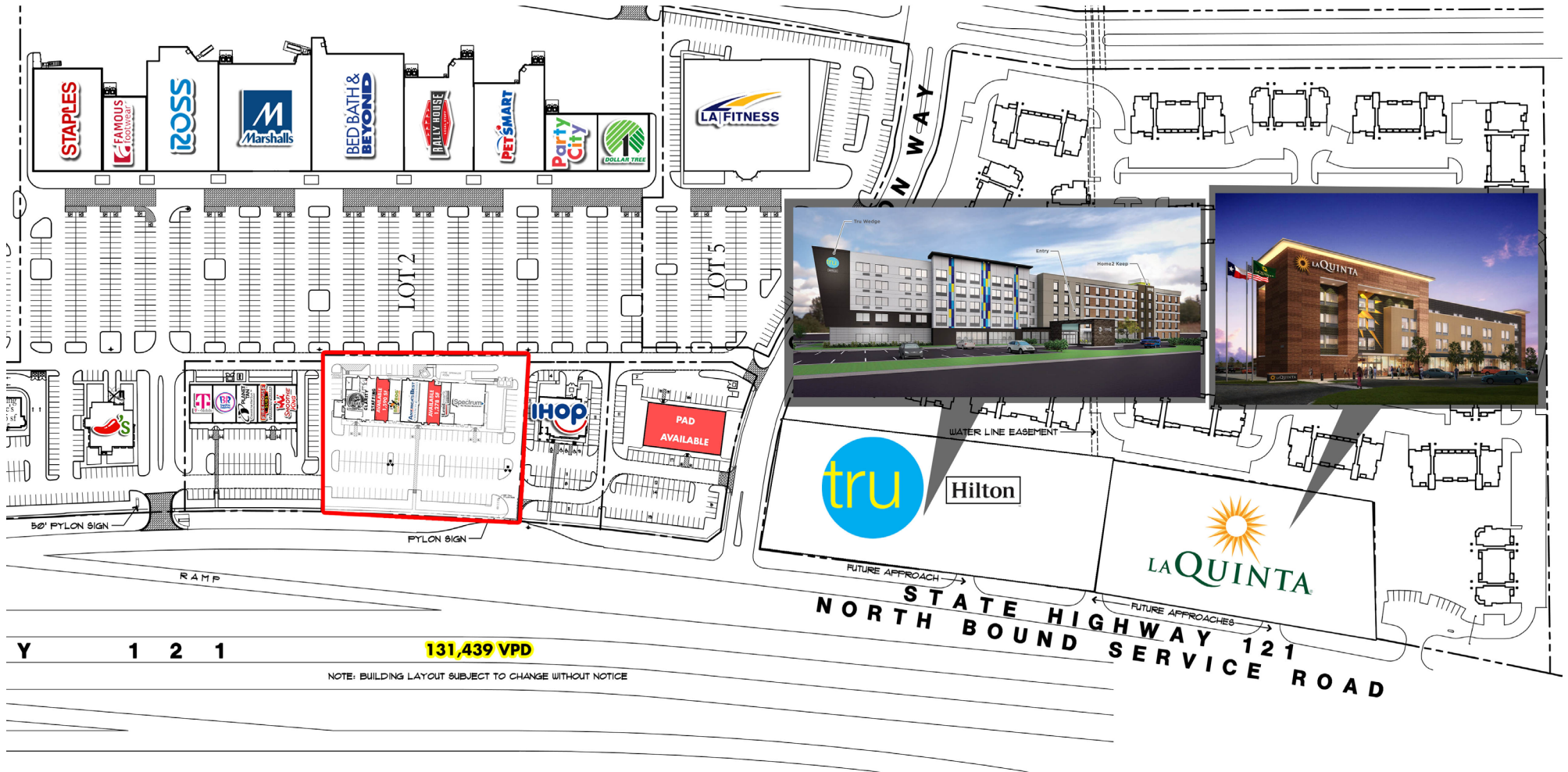
The information contained herein was obtained from sources deemed reliable; however, no guarantees, warranties or representations as to the completeness or accuracy thereof. The presentation of this real estate information is subject to errors; omissions; change of price; prior sale or lease; or withdrawal without notice.



# THE SHOPS AT VINEYARD VILLAGE

SEQ OF GLADE & SH 121, EULESS, TEXAS

SHOP COS.



Y 1 2 1

131,439 VPD

NOTE: BUILDING LAYOUT SUBJECT TO CHANGE WITHOUT NOTICE

Thomas Glendenning / THOMAS@SHOPCOMPANIES.COM / 214-960-4528

Jake Sherrington / JAKE@SHOPCOMPANIES.COM / 214-960-4623

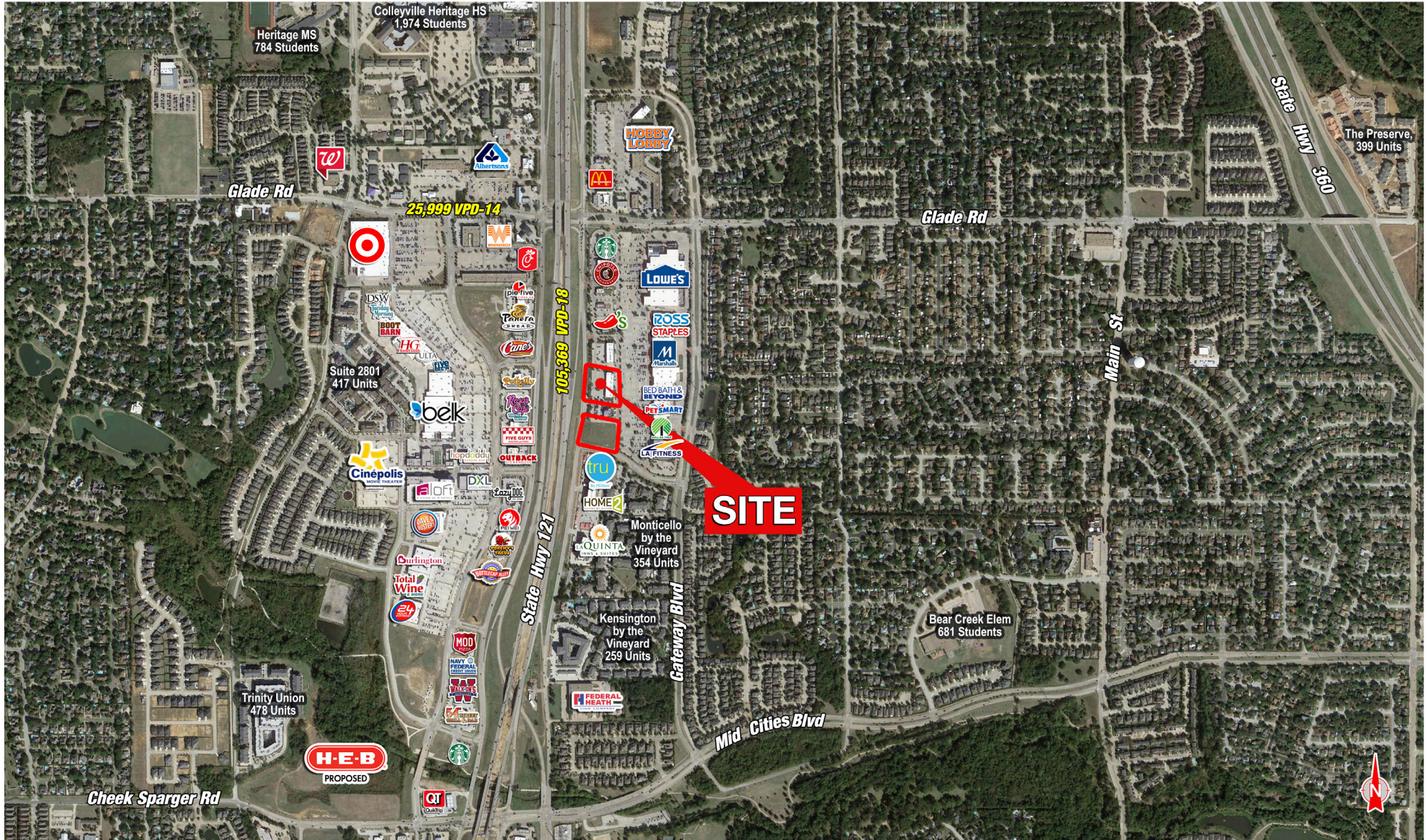
The information contained herein was obtained from sources deemed reliable; however, no guarantees, warranties or representations as to the completeness or accuracy thereof. The presentation of this real estate information is subject to errors; omissions; change of price; prior sale or lease; or withdrawal without notice.



# THE SHOPS AT VINEYARD VILLAGE

SEQ OF GLADE & SH 121, EULESS, TEXAS

SHOP COS.



Thomas Glendenning / [THOMAS@SHOPCOMPANIES.COM](mailto:THOMAS@SHOPCOMPANIES.COM) / 214-960-4528

Jake Sherrington / [JAKE@SHOPCOMPANIES.COM](mailto:JAKE@SHOPCOMPANIES.COM) / 214-960-4623

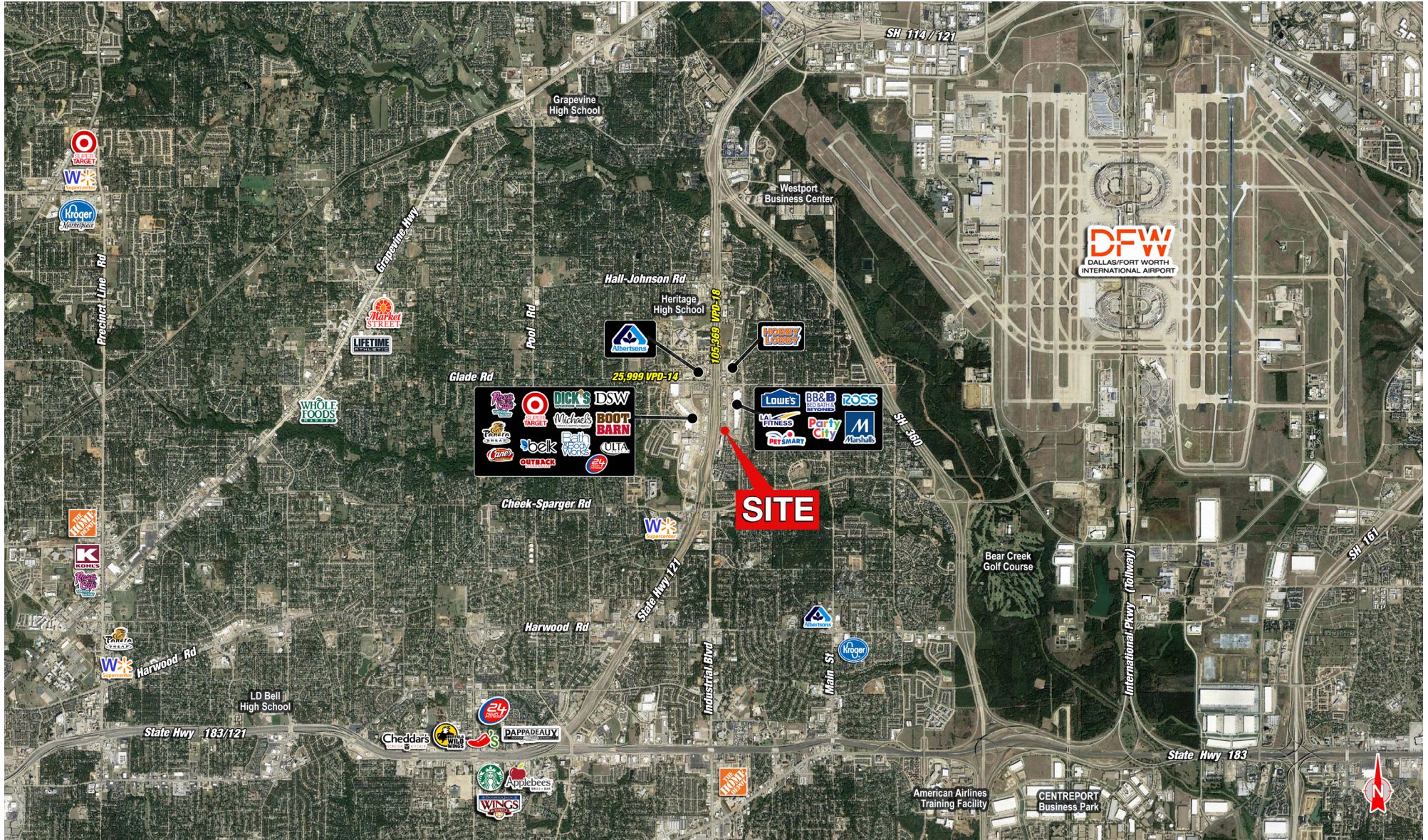
The information contained herein was obtained from sources deemed reliable; however, no guarantees, warranties or representations as to the completeness or accuracy thereof. The presentation of this real estate information is subject to errors; omissions; change of price; prior sale or lease; or withdrawal without notice.



# THE SHOPS AT VINEYARD VILLAGE

SEQ OF GLADE & SH 121, EULESS, TEXAS

SHOP COS.



Thomas Glendenning / [THOMAS@SHOPCOMPANIES.COM](mailto:THOMAS@SHOPCOMPANIES.COM) / 214-960-4528

Jake Sherrington / [JAKE@SHOPCOMPANIES.COM](mailto:JAKE@SHOPCOMPANIES.COM) / 214-960-4623

The information contained herein was obtained from sources deemed reliable; however, no guarantees, warranties or representations as to the completeness or accuracy thereof. The presentation of this real estate information is subject to errors; omissions; change of price; prior sale or lease; or withdrawal without notice.





# INFORMATION ABOUT BROKERAGE SERVICES



TEXAS LAW REQUIRES ALL REAL ESTATE LICENSE HOLDERS TO GIVE THE FOLLOWING INFORMATION ABOUT BROKERAGE SERVICES TO PROSPECTIVE BUYERS, TENANTS, SELLERS AND LANDLORDS.

## TYPES OF REAL ESTATE LICENSE HOLDERS:

- **A BROKER** is responsible for all brokerage activities, including acts performed by sales agents sponsored by the broker.
- **A SALES AGENT** must be sponsored by a broker and works with clients on behalf of the broker.

## A BROKER'S MINIMUM DUTIES REQUIRED BY LAW (A client is the person or party that the broker represents):

- Put the interests of the client above all others, including the broker's own interests;
- Inform the client of any material information about the property or transaction received by the broker;
- Answer the client's questions and present any offer to or counter-offer from the client; and
- Treat all parties to a real estate transaction honestly and fairly.

## A LICENSE HOLDER CAN REPRESENT A PARTY IN A REAL ESTATE TRANSACTION:

**AS AGENT FOR OWNER (SELLER/LANDLORD):** The broker becomes the property owner's agent through an agreement with the owner, usually in a written listing to sell or property management agreement. An owner's agent must perform the broker's minimum duties above and must inform the owner of any material information about the property or transaction known by the agent, including information disclosed to the agent or subagent by the buyer or buyer's agent.

**AS AGENT FOR BUYER/TENANT:** The broker becomes the buyer/tenant's agent by agreeing to represent the buyer, usually through a written representation agreement. A buyer's agent must perform the broker's minimum duties above and must inform the buyer of any material information about the property or transaction known by the agent, including information disclosed to the agent by the seller or seller's agent.

**AS AGENT FOR BOTH - INTERMEDIARY:** To act as an intermediary between the parties the broker must first obtain the written agreement of each party to the transaction. The written agreement must state who will pay the broker and, in conspicuous bold or underlined print, set forth the broker's obligations as an intermediary. A broker who acts as an intermediary:

- Must treat all parties to the transaction impartially and fairly;
- May, with the parties' written consent, appoint a different license holder associated with the broker to each party (owner and buyer) to communicate with, provide opinions and advice to, and carry out the instructions of each party to the transaction.
- Must not, unless specifically authorized in writing to do so by the party, disclose:
  - o that the owner will accept a price less than the written asking price;
  - o that the buyer/tenant will pay a price greater than the price submitted in a written offer; and
  - o any confidential information or any other information that a party specifically instructs the broker in writing not to disclose, unless required to do so by law.

**AS SUBAGENT:** A license holder acts as a subagent when aiding a buyer in a transaction without an agreement to represent the buyer. A subagent can assist the buyer but does not represent the buyer and must place the interests of the owner first.

## TO AVOID DISPUTES, ALL AGREEMENTS BETWEEN YOU AND A BROKER SHOULD BE IN WRITING AND CLEARLY ESTABLISH:

- The broker's duties and responsibilities to you, and your obligations under the representation agreement.
- Who will pay the broker for services provided to you, when payment will be made and how the payment will be calculated.

**LICENSE HOLDER CONTACT INFORMATION:** This notice is being provided for information purposes. It does not create an obligation for you to use the broker's services. Please acknowledge receipt of this notice below and retain a copy for your records.

SHOP COMPANIES

Licensed Broker/Broker Firm Name

9002835

License No.

shop@shopcompanies.com

Email

214.960.4545

Phone

RAND HOROWITZ

Designated Broker of Firm

513705

License No.

rand@shopcompanies.com

Email

214.242.5444

Phone