

FOR LEASE

1010 N. GROVE STREET
ANAHEIM, CA

**FULLY
RENOVATED**

±22,802 S.F.



91-Freeway Frontage and Exposure with Over 250,000 Cars / Day

PROPERTY FEATURES:

- ±2,370 S.F. of Office Space
- ±16,000 S.F. of Fenced Yard Area
- Two (2) Exterior Truck Wells
- Two (2) Ground Level Doors (12' x 14' & 15' x 16')
- Clear Height Varies: 19' – 22'
- Fire Sprinklers Throughout
- 400 Amps of Power - Verify



**Ashwill
Associates**
COMMERCIAL REAL ESTATE

Greg Ashwill
greg@ashwill.com
Lic. 00943299
(909) 612-9898

Mitch Ashwill
mitch@ashwill.com
Lic. 00970525
(626) 363-7868

21660 E. Copley Drive, Suite 350, Diamond Bar, CA 91765

The information contained herein has been obtained from sources we deem reliable. While we have no reason to doubt its accuracy, we do not guarantee it. The prospective buyer or lessee should independently verify all information contained herein. All measurements are approximate.

SITE PLAN

1010 N. GROVE STREET
ANAHEIM, CA

**FULLY
RENOVATED**

±22,802 S.F.



**Ashwill
Associates**
COMMERCIAL REAL ESTATE

Greg Ashwill
greg@ashwill.com
Lic. 00943299
(909) 612-9898

Mitch Ashwill
mitch@ashwill.com
Lic. 00970525
(626) 363-7868

21660 E. Copley Drive, Suite 350, Diamond Bar, CA 91765

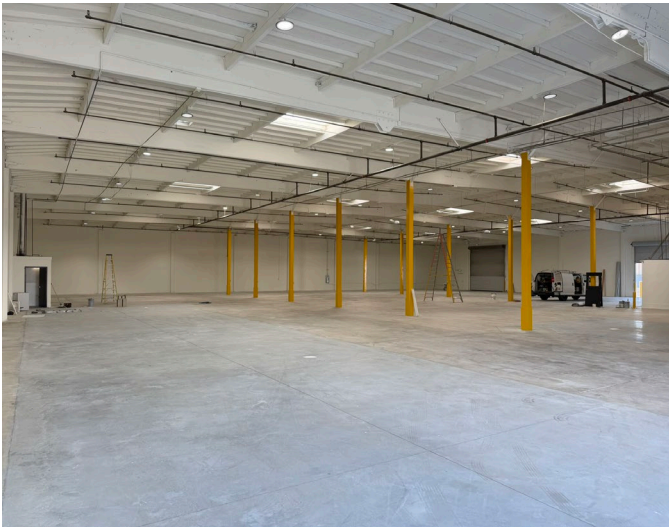
The information contained herein has been obtained from sources we deem reliable. While we have no reason to doubt its accuracy, we do not guarantee it. The prospective buyer or lessee should independently verify all information contained herein. All measurements are approximate.

PHOTOS

1010 N. GROVE STREET
ANAHEIM, CA

**FULLY
RENOVATED**

±22,802 S.F.



**Ashwill
Associates**
COMMERCIAL REAL ESTATE

Greg Ashwill
greg@ashwill.com
Lic. 00943299
(909) 612-9898

Mitch Ashwill
mitch@ashwill.com
Lic. 00970525
(626) 363-7868

21660 E. Copley Drive, Suite 350, Diamond Bar, CA 91765

The information contained herein has been obtained from sources we deem reliable. While we have no reason to doubt its accuracy, we do not guarantee it. The prospective buyer or lessee should independently verify all information contained herein. All measurements are approximate.

FOR LEASE

1010 N. GROVE STREET
ANAHEIM, CA

**FULLY
RENOVATED**

±22,802 S.F.



**Ashwill
Associates**
COMMERCIAL REAL ESTATE

Greg Ashwill
greg@ashwill.com
Lic. 00943299
(909) 612-9898

Mitch Ashwill
mitch@ashwill.com
Lic. 00970525
(626) 363-7868

21660 E. Copley Drive, Suite 350, Diamond Bar, CA 91765

The information contained herein has been obtained from sources we deem reliable. While we have no reason to doubt its accuracy, we do not guarantee it. The prospective buyer or lessee should independently verify all information contained herein. All measurements are approximate.