



PROMO RATE

\$5,625/mo (\$0.75 PSF)
For Year 1 + CAM

7,500 SF AVAILABLE FOR LEASE

Industrial Unit - Within a Professionally Maintained Park

729 C/D W Anaheim St. | Long Beach, CA 90813





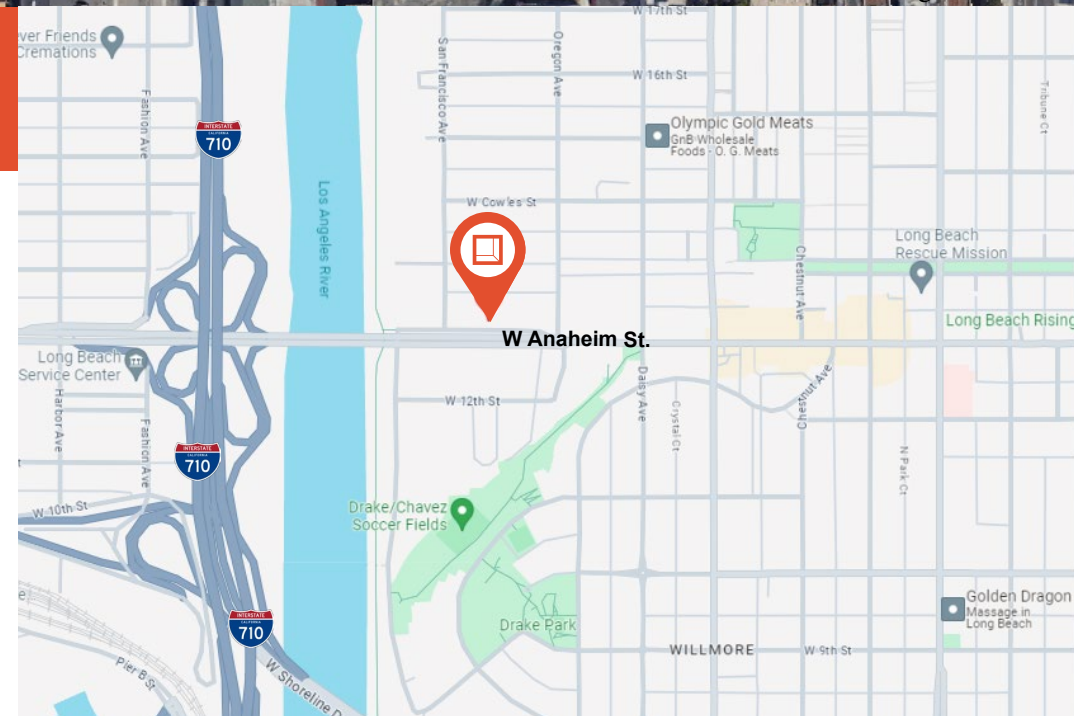
W Anaheim St

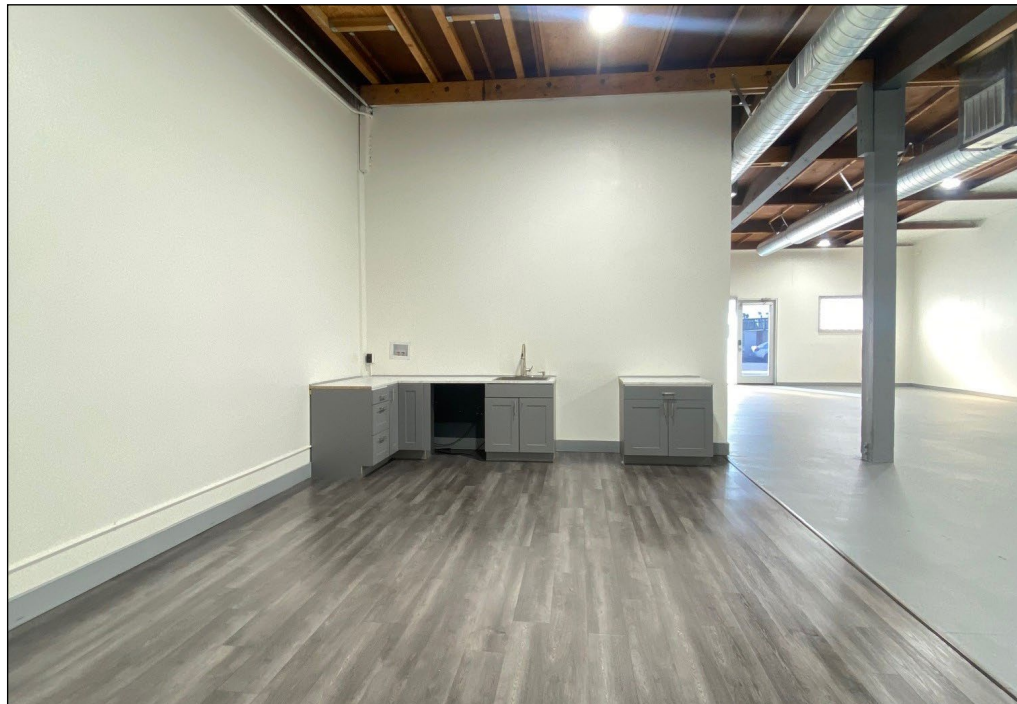
W Anaheim St

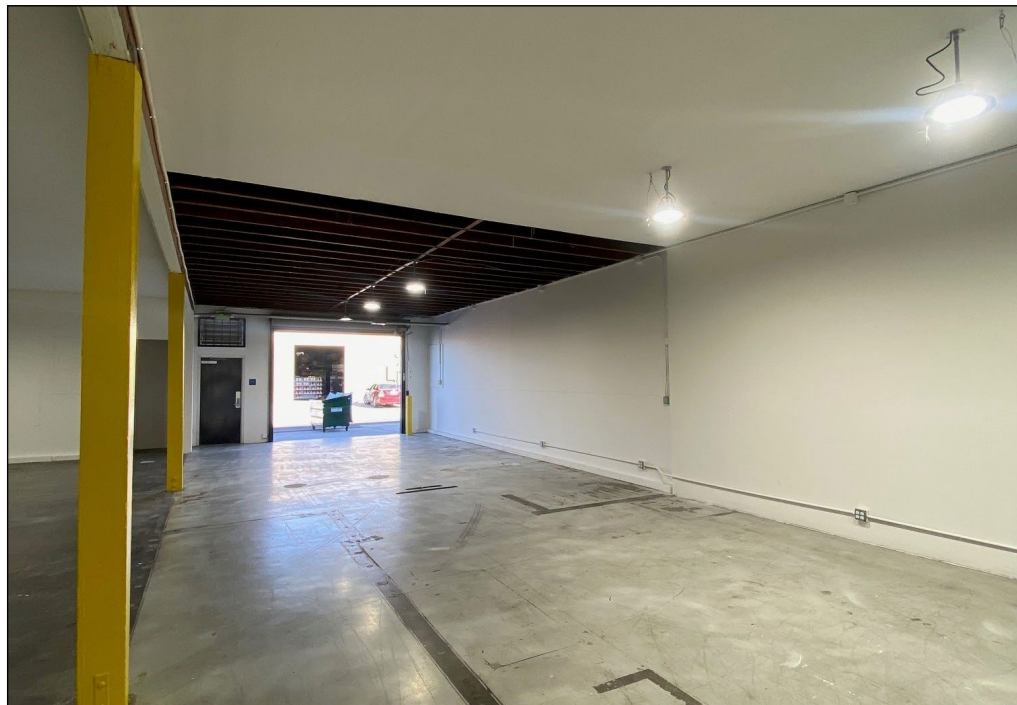
©2022 Google

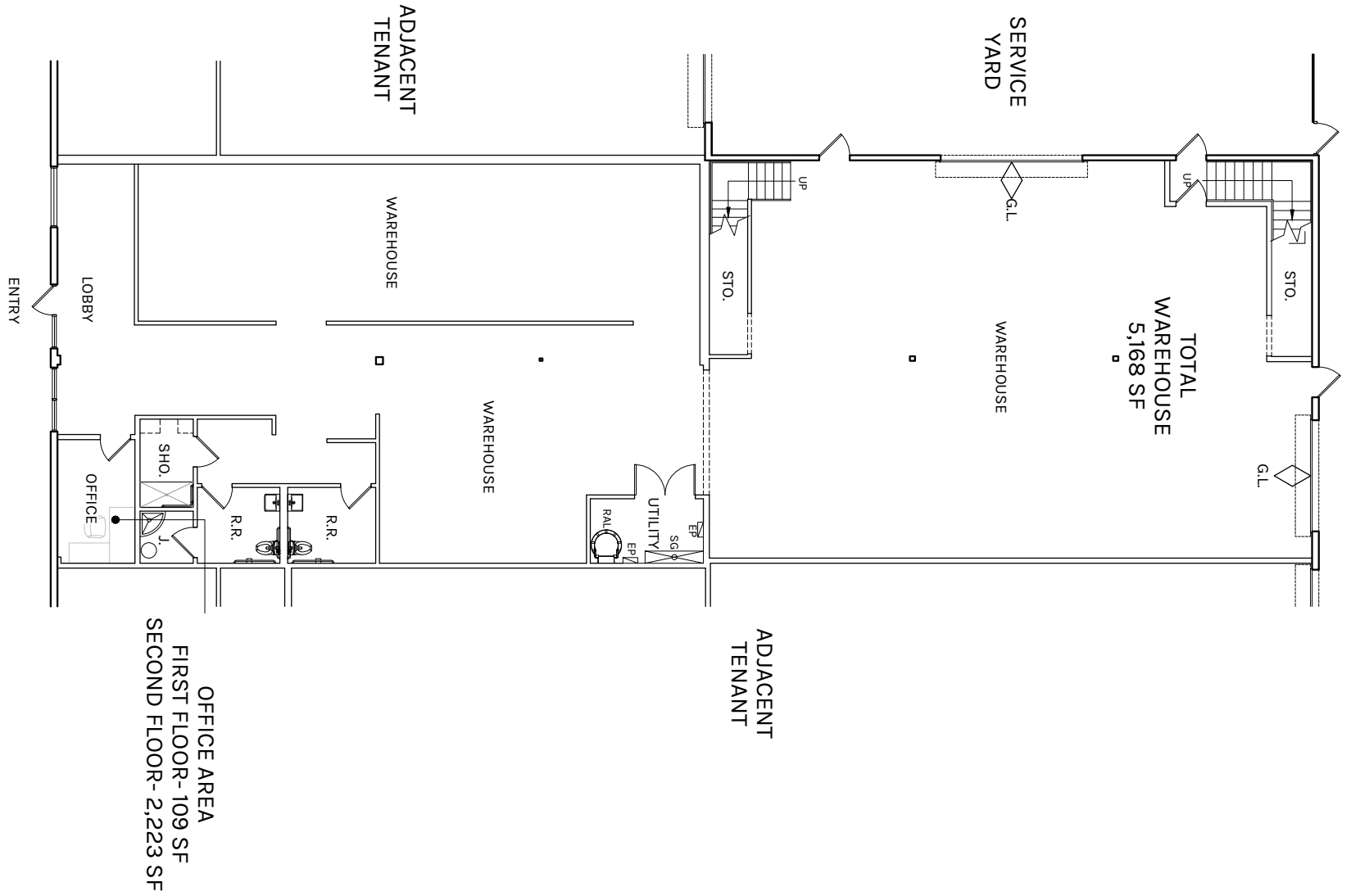
Property Highlights

- **RATE:** \$1.10 PSF + \$0.12 PSF CAM
- **CAM Includes:** Normal Water, Normal Trash, Landscaping
- Completely Refurbished Industrial Unit
- 5,277 SF 1st Floor with 2,223 SF Office Mezzanine
- Great Manufacturing or R&D Space
- Heavy Power (600 Amps / 240V / 3Phase)
- Immediate Access to LB/ LA Ports









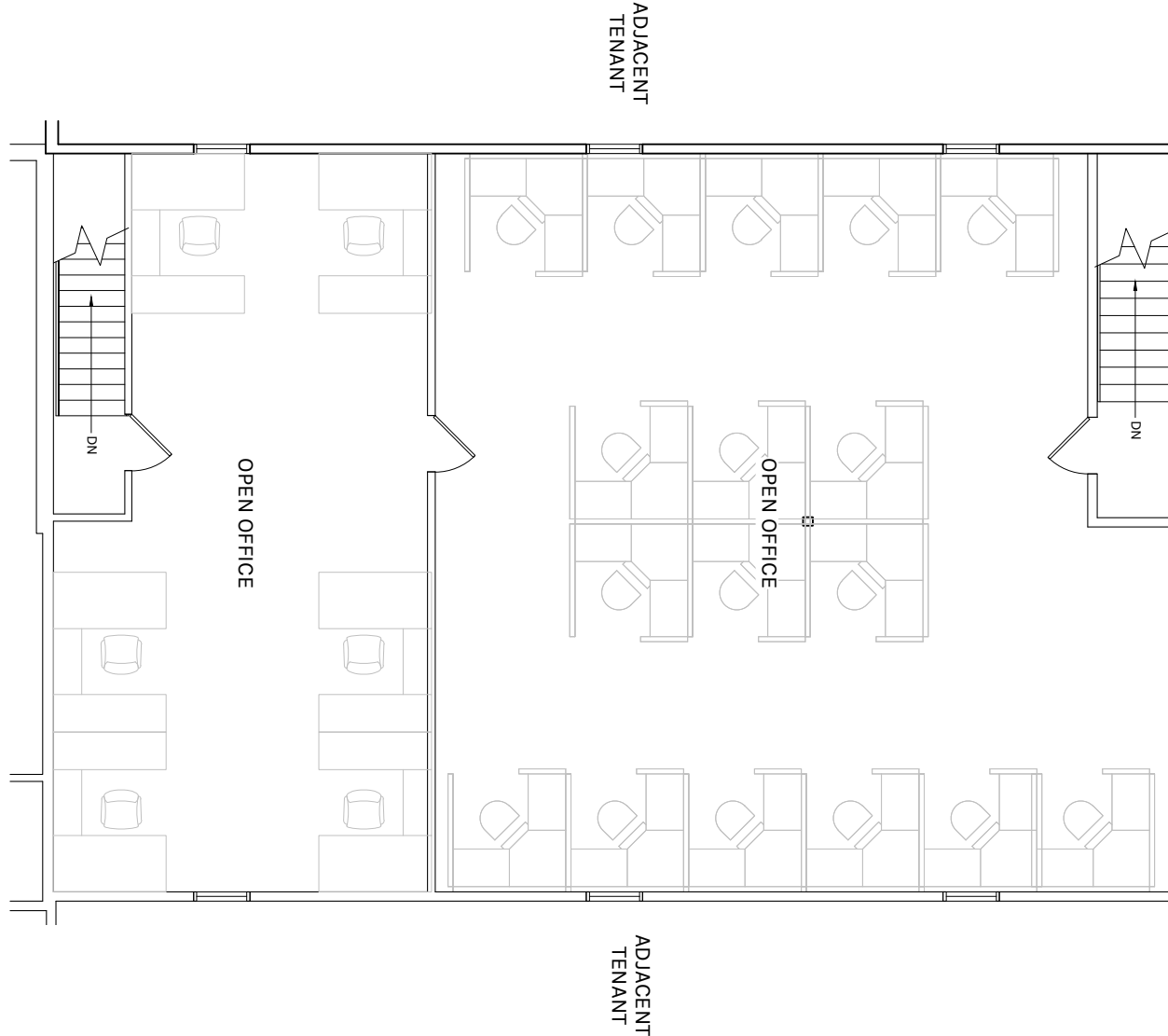
OFFICE AREA
 FIRST FLOOR - 109 SF
 SECOND FLOOR - 2,223 SF

WAREHOUSE
 5,277 SF

OFFICE
 2,223 SF

TOTAL
 7,500 SF

PLAN LAYOUT SUBJECT TO FIELD CONDITIONS AND MAY DIFFER FROM PLAN AS SHOWN. ALL INFORMATION PRESENTED ON THIS DRAWING IS PRESUMED TO BE ACCURATE, HOWEVER TENANT SHOULD VERIFY PERTINENT INFORMATION PRIOR TO COMMITTING TO A LEASE. ANY FURNITURE OR APPLIANCES SHOWN ON PLAN ARE FOR CONCEPT ONLY AND WILL BE TENANT PROVIDED.



WAREHOUSE
5,277 SF

OFFICE
2,223 SF

TOTAL
7,500 SF

PLAN LAYOUT SUBJECT TO FIELD CONDITIONS AND MAY DIFFER FROM PLAN AS SHOWN. ALL INFORMATION PRESENTED ON THIS DRAWING IS PRESUMED TO BE ACCURATE, HOWEVER TENANT SHOULD VERIFY PERTINENT INFORMATION PRIOR TO COMMITTING TO A LEASE. ANY FURNITURE OR APPLIANCES SHOWN ON PLAN ARE FOR CONCEPT ONLY AND WILL BE TENANT PROVIDED.



**Rexford
Industrial**

Leasing Contacts

Maximillian Ceseña Robles

Associate

562.354.2531

mrobles@leelalb.com

DRE# 02057317

Garrett Massaro

Principal

562.354.2516

gmassaro@leelalb.com

DRE# 01771471

Brandon Carrillo

Principal

562.354.2510

bcarrillo@leelalb.com

DRE# 01745362



COMMERCIAL REAL ESTATE SERVICES

Lee & Associates Los Angeles - Long Beach, Inc.

5000 E Spring Street, Suite 600

Long Beach, CA 90815

562.354.2500

lee-associates.com

Copyright © Lee & Associates. All rights reserved. No part of this work may be reproduced or distributed without written permission of the copyright owner. The information contained in this report was gathered by Lee & Associates from sources believed to be reliable. Lee & Associates, however, makes no representation concerning the accuracy or completeness of such information and expressly disclaims any responsibility for any inaccuracy contained herein. 08.29.24