



savills

For **sublease**

5,710 SF of Class “A” Office Available for Sublease

515 S Flower Street, Ste 1150, Los Angeles, CA 90071

SPACE PROFILE

5,710 SF
Total SF

Immediate
Availability

Negotiable
Rental rate

11th
Floor

4/30/2026
Term Expiration

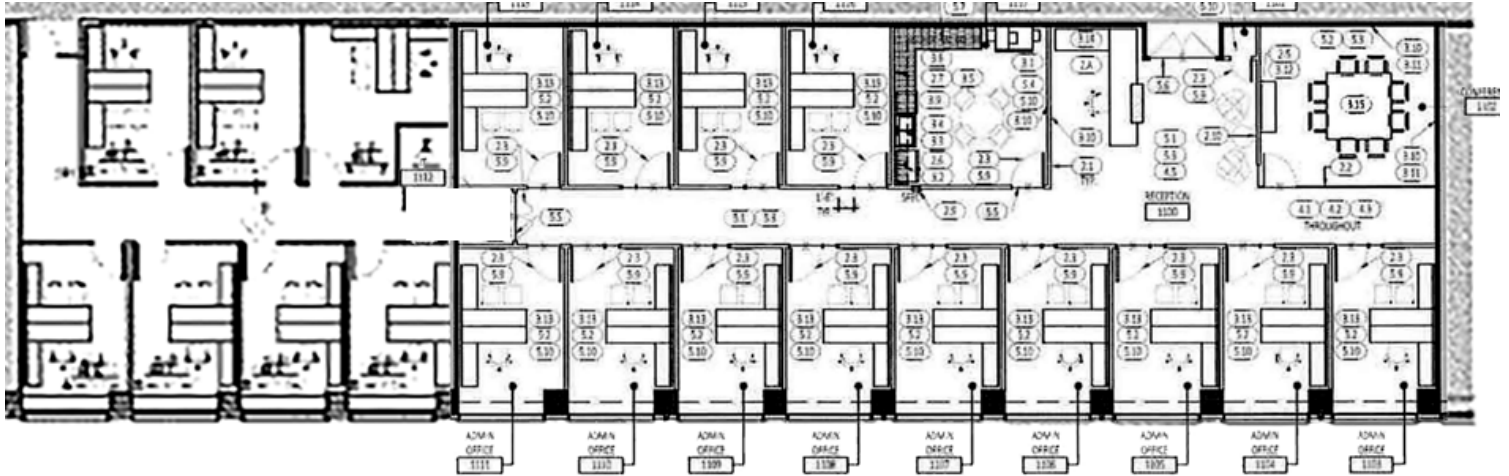
Available
Furniture





- Prime Location in the Heart of DTLA
- Located at City National Plaza
- Law Firm or Professional Services Build Out
- 20 private offices (13 Perimeter and 7 Interior)
- Large windows with generous sunlight

- Furniture and Workspaces available
- Conference room with video conferencing
- Space for collaboration
- 2 C-Level Parking Pass in Subterranean Garage
- 6 Plaza Garage Parking Passes (unreserved)



Anthony Kendryna

+1 213 553 3859
akendryna@savills.us
License #01921485

Dan Heller

+1 213 553 3851
danheller@savills.us
License #02226313



The information contained in this communication has been obtained from a variety of sources believed to be reliable but has not been verified. NO WARRANTY OR REPRESENTATION, EXPRESS OR IMPLIED, IS MADE AS TO THE CONDITION OF THE PROPERTY OR ACCURACY OR COMPLETENESS OF THE INFORMATION CONTAINED HEREIN AND SAME IS SUBMITTED SUBJECT TO ERRORS, OMISSIONS, CHANGE OF PRICE, RENTAL OR OTHER CONDITIONS, WITHDRAWAL WITHOUT NOTICE AND TO ANY SPECIFIC CONDITIONS IMPOSED BY THE PROPERTY OWNER OR LESSOR.