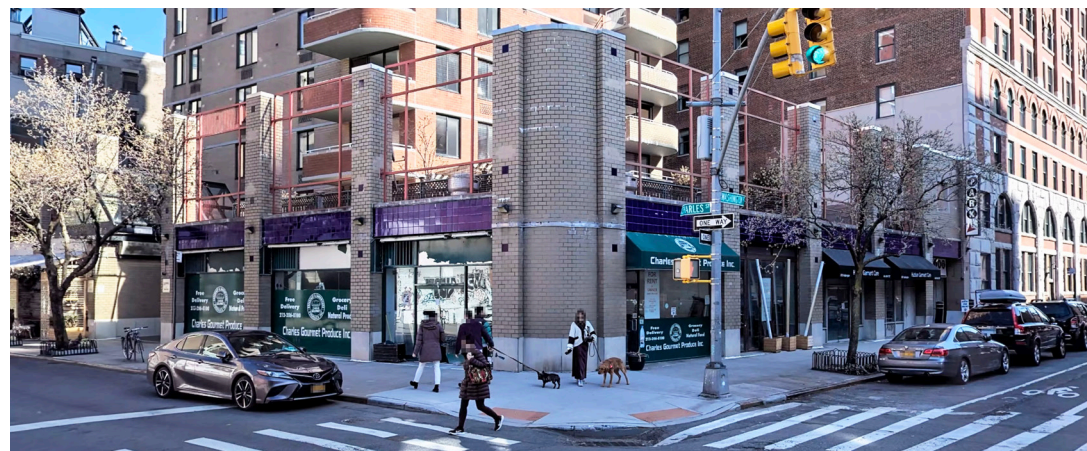




# 679-683 WASHINGTON STREET

BETWEEN CHARLES AND WEST 10TH STREETS | WEST VILLAGE



**EXCLUSIVE BROKER**

**Gage Dallas Sharp**  
 Associate Director  
 Murro Realty  
 646.480.7078  
[gage@murrorealty.com](mailto:gage@murrorealty.com)

**SIZE**

- 5,200 SF ground floor
- No basement

**CEILINGS**

- 13 FT

**ASKING RENT**

\$55,000 per month

**POSSESSION**

Immediate

**NEIGHBORS**

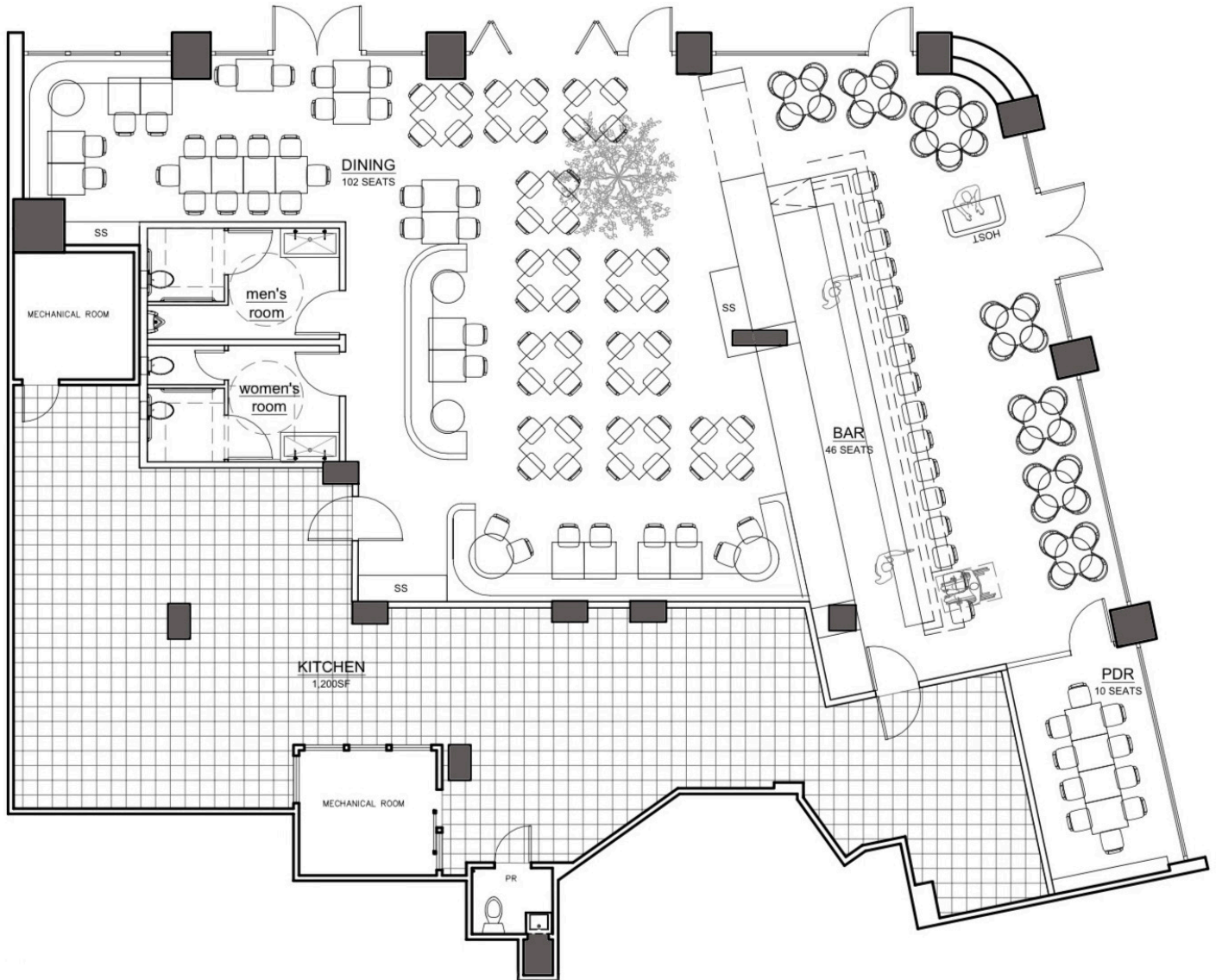
Casa La Femme, Wallse, Wild, Employees Only, The Warren, Red Farm, Dante, Cowgirl, etc.

**COMMENTS**

- Wraparound Corner Frontage
- Has Gas and is Vented
- Prime West Village Neighborhood
- High Income Demographic
- Reasonable divisions possible

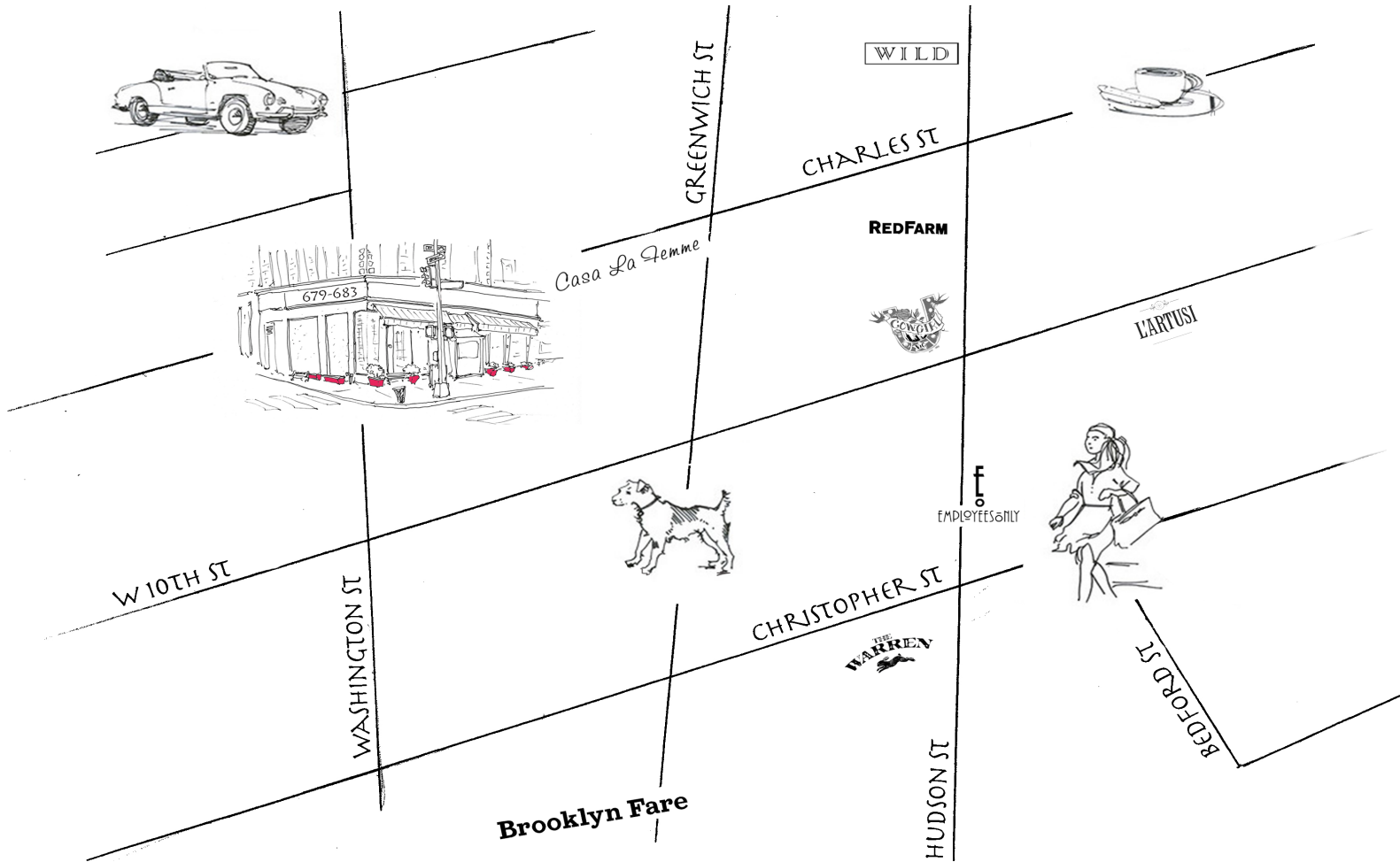
# 679-683 WASHINGTON STREET

BETWEEN CHARLES AND WEST 10TH STREETS | WEST VILLAGE



# 679-683 WASHINGTON STREET

BETWEEN CHARLES AND WEST 10TH STREETS | WEST VILLAGE



## EXCLUSIVE BROKERS

**Jarret Sharp**

Director

Murro Realty

646.461.6100

jarrett@murrorealty.com

**Cosmo Montemurro**

CEO

Murro Realty

646.419.4700

cosmo@murrorealty.com