

710 Main Street Phoenixville, PA 19460



**POPULATION**  
3 MILE- 46,745  
5 MILE- 105,351  
7 MILE- 198,098



**EMPLOYEES**  
3 MILE- 13,677  
5 MILE- 33,969  
7 MILE- 154,867



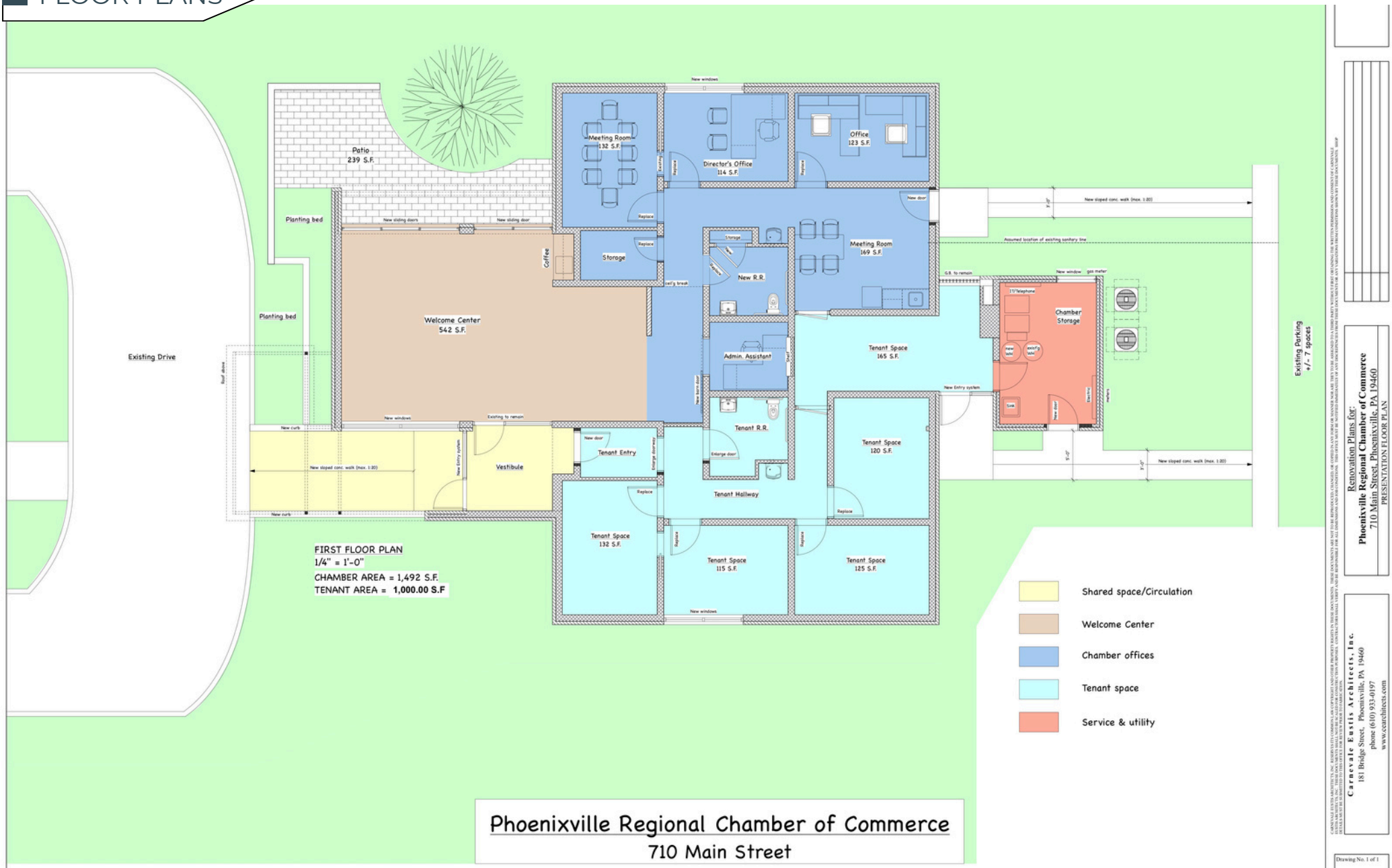
**AVERAGE HHI**  
3 MILE- \$161,016  
5 MILE- \$166,967  
7 MILE- \$171,820



**HOUSEHOLDS**  
3 MILE- 19,393  
5 MILE- 42,635  
7 MILE- 80,185

# 710 Main Street Phoenixville, PA 19460

## FLOOR PLANS



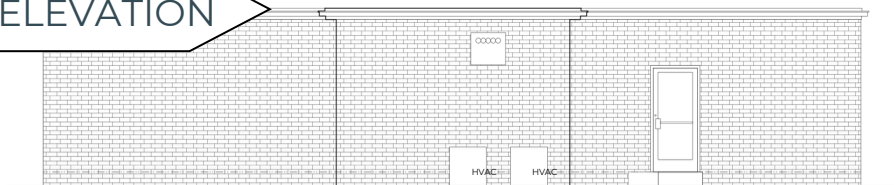
Renovation Plans for  
**Phoenixville Regional Chamber of Commerce**  
 710 Main Street, Phoenixville, PA 19460  
 PRESENTATION FLOOR PLAN

Caravale Eastis Architects, Inc.  
 181 Bridge Street, Phoenixville, PA 19460  
 phone (610) 933-0197  
 www.cearchitects.com

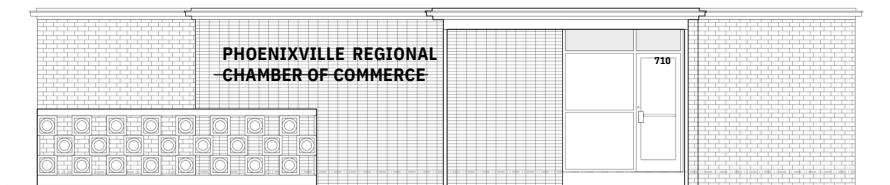
Drawing No. 1 of 1

# 710 Main Street Phoenixville, PA 19460

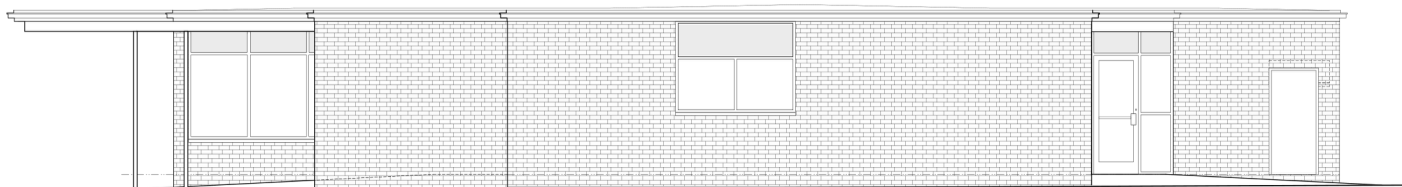
ELEVATION



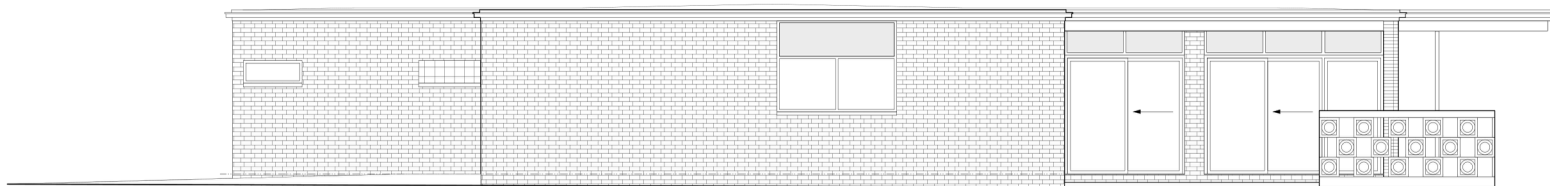
WEST ELEVATION  
1/4" = 1'-0"



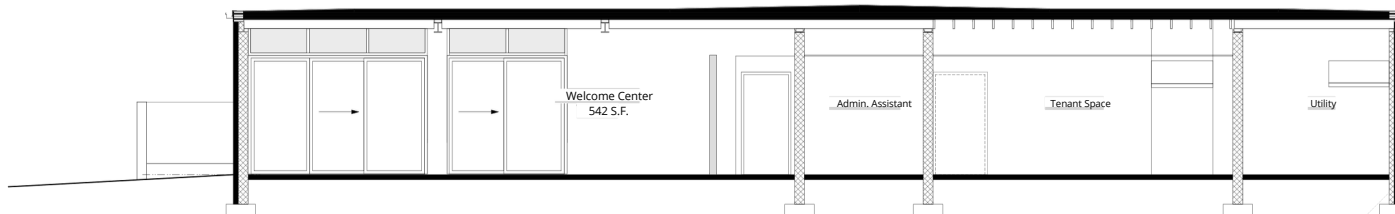
EAST ELEVATION  
1/4" = 1'-0"



NORTH ELEVATION  
1/4" = 1'-0"



SOUTH ELEVATION  
1/4" = 1'-0"



BUILDING SECTION  
A-2/1/4" = 1'-0"

PROGRESS PRINT  
NOT FOR CONSTRUCTION

ALL RIGHTS RESERVED. THIS DOCUMENT IS THE PROPERTY OF SEAN MALONEY ARCHITECTS, INC. AND IS TO BE USED ONLY FOR THE PROJECT AND SITE SPECIFICALLY IDENTIFIED HEREIN. ANY REUSE OR MODIFICATION OF THIS DOCUMENT WITHOUT THE WRITTEN PERMISSION OF SEAN MALONEY ARCHITECTS, INC. IS STRICTLY PROHIBITED. THE ARCHITECT ASSUMES NO LIABILITY FOR ANY DAMAGES, INCLUDING CONSEQUENTIAL DAMAGES, ARISING FROM THE USE OF THIS DOCUMENT.

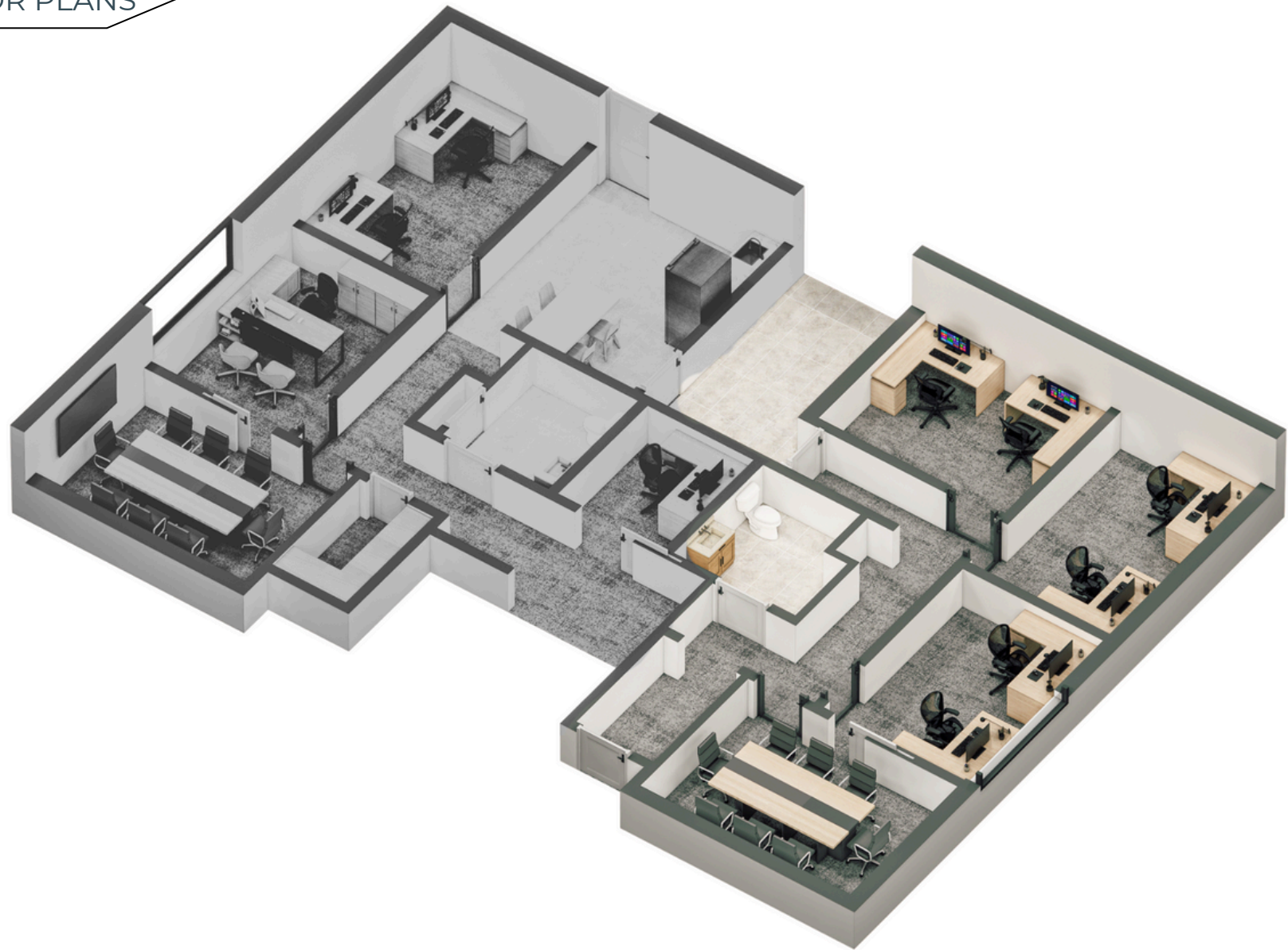
Renovation Plans for:  
 Phoenixville Regional Chamber of Commerce  
 710 Main Street, Phoenixville, PA 19460  
 EXTERIOR ELEVATIONS, BUILDING SECTION

Carnevaleustis Architects, Inc.  
 Phone (610) 933-1811  
 181 Bigger Street, Phoenixville, PA 19460  
 www.seanarchitects.com

Drawing No. 2 of 4  
 A-2  
 Date: March 6, 2024  
 Scale: as noted

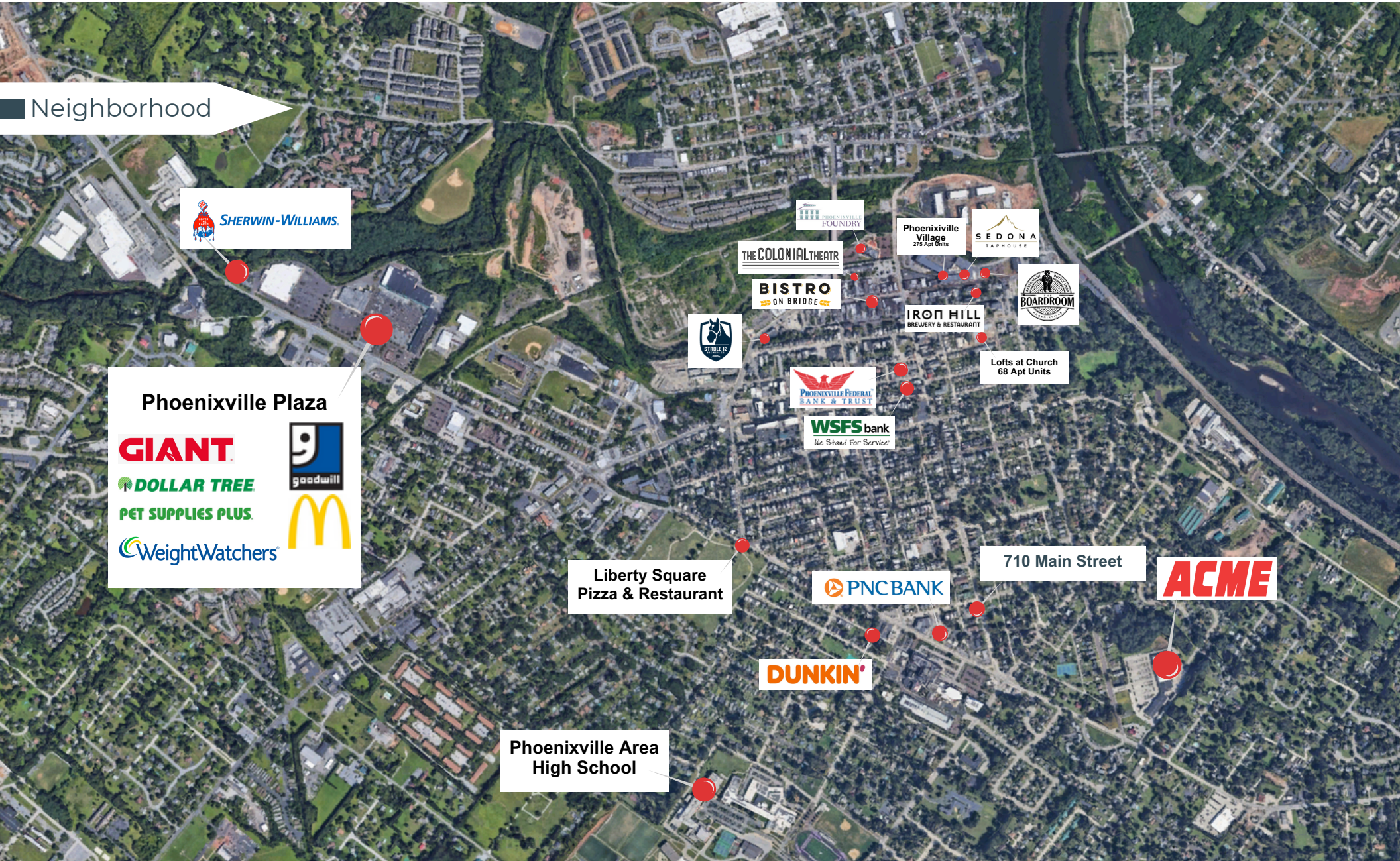
# 710 Main Street Phoenixville, PA 19460

FLOOR PLANS



**FOR LEASE**

# 710 Main Street Phoenixville, PA 19460



Neighborhood

 **SHERWIN-WILLIAMS.**

**Phoenixville Plaza**


 

**PET SUPPLIES PLUS.**



 **THE COLONIAL THEATR**

 **Phoenixville Village**  
275 Apt Units

 **SEDONA**  
TAPHOUSE

 **BISTRO**  
ON BRIDGE

 **IRON HILL**  
BREWERY & RESTAURANT

 **BOARDROOM**







**Lofts at Church**  
68 Apt Units

**Liberty Square**  
Pizza & Restaurant



**710 Main Street**





**Phoenixville Area**  
High School

# 710 Main Street Phoenixville, PA 19460

Welcome to a premier leasing opportunity in the newly renovated Phoenixville Regional Chamber of Commerce building!

This modern office space boasts a spacious layout, with approximately 1,000 square feet featuring a large open area, four individual offices, and a private bathroom for ultimate convenience. Enjoy both front and rear entrances for added convenience, with access to a common vestibule that leads to your own private entry. Off-street parking is available, along with plenty of street parking for employees and visitors.

Tenants have the unique opportunity to customize their fit-out to perfectly suit their business needs before the space becomes available in January 2025. Located just a 15-minute walk down Main Street, you'll find yourself in the heart of Phoenixville's vibrant center on Bridge Street, filled with cafes, boutique shops, and top-notch restaurants. Don't miss out on this fantastic opportunity to establish or expand your business in a growing and bustling community.

# Sean Maloney Group

From finding the right office space to leasing retail storefronts, our team understands the dynamics of the commercial real estate landscape.

We bring insights that support your business goals and make the process seamless.



## CONTACT US



[sean-maloney.remax.com](http://sean-maloney.remax.com)



[sean@seanmaloneygroup.com](mailto:sean@seanmaloneygroup.com)



215-783-6543