



# Design Center of the Americas (DCOTA)

## 8,847 RSF - 27,640 RSF Available for Sublease

DANIA BEACH 1855 GRIFFIN ROAD



## AVAILABLE

Suite A-415 (A): 8,847 RSF

Suite A-415 (B): 18,793 RSF

**Total: 27,640 RSF**

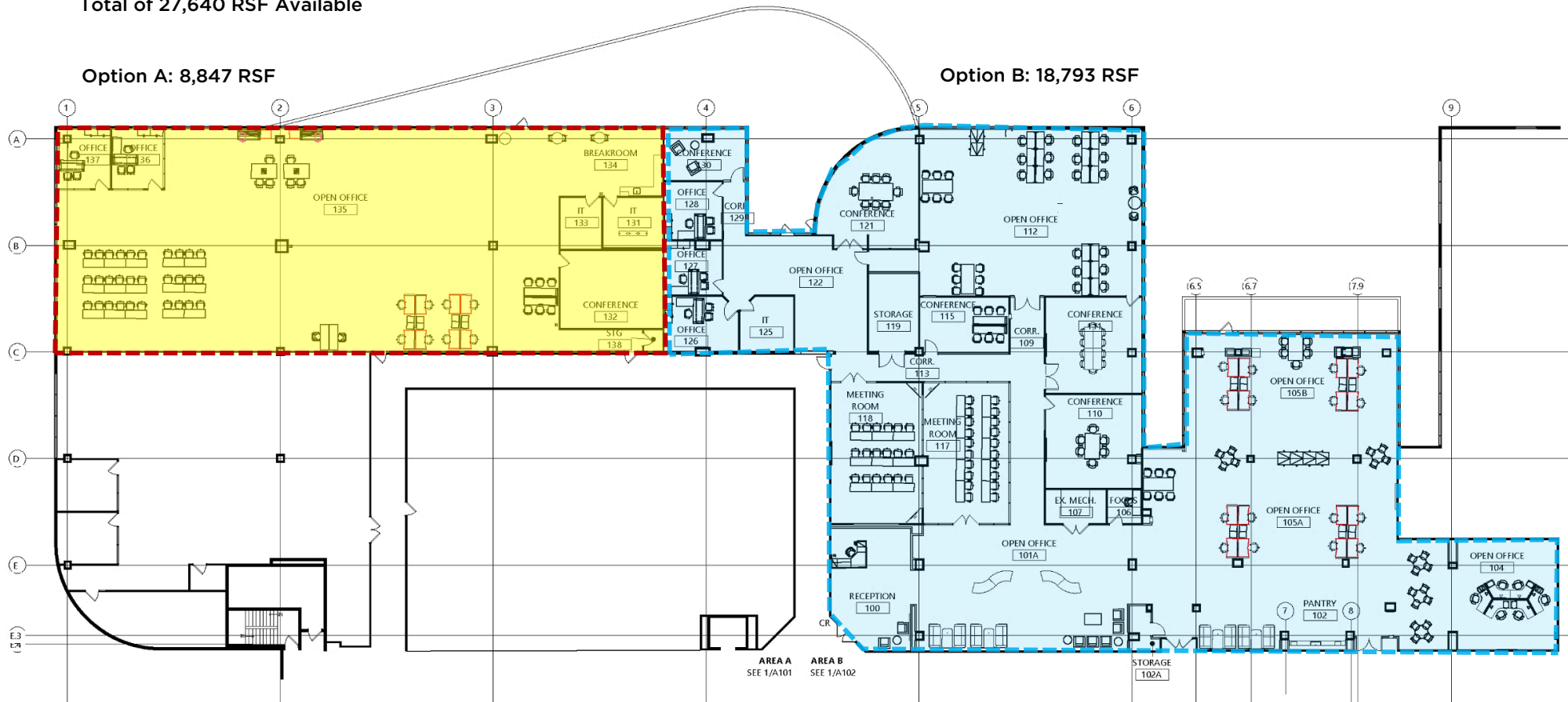
## KEY HIGHLIGHTS

- Lease term through March 31, 2029
- Negotiable Sublease rate
- Reception area
- Multiple Conference rooms
- 2 Training rooms
- 5 Offices
- 1 Breakroom / 1 Pantry
- IT/Storage room
- Outdoor terrace
- 4.72/1000 SF Parking ratio
- Direct access to I-95
- Within walking distance to the Fort Lauderdale Tri-Rail station
- Valet parking available
- Adjacent to Le Meridien Hotel
- Wi-Fi equipped public spaces
- Full restaurant and café
- Coffee bar and unique meeting venues



## FLOOR PLAN

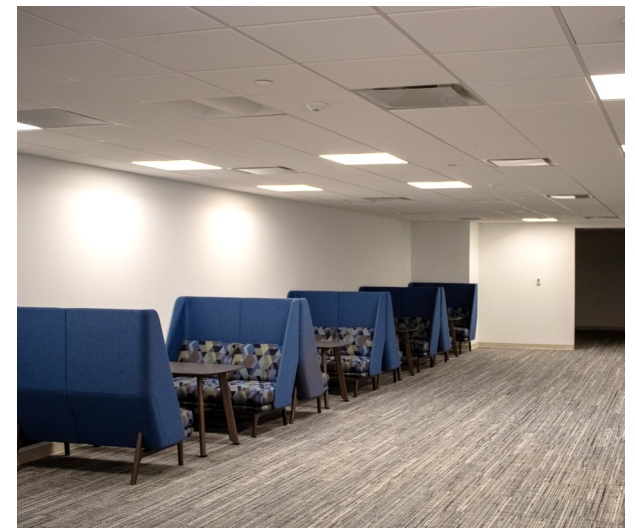
Suite A-415 (A): 8,847 RSF  
 Suite A-415 (B): 18,793 RSF  
 Total of 27,640 RSF Available



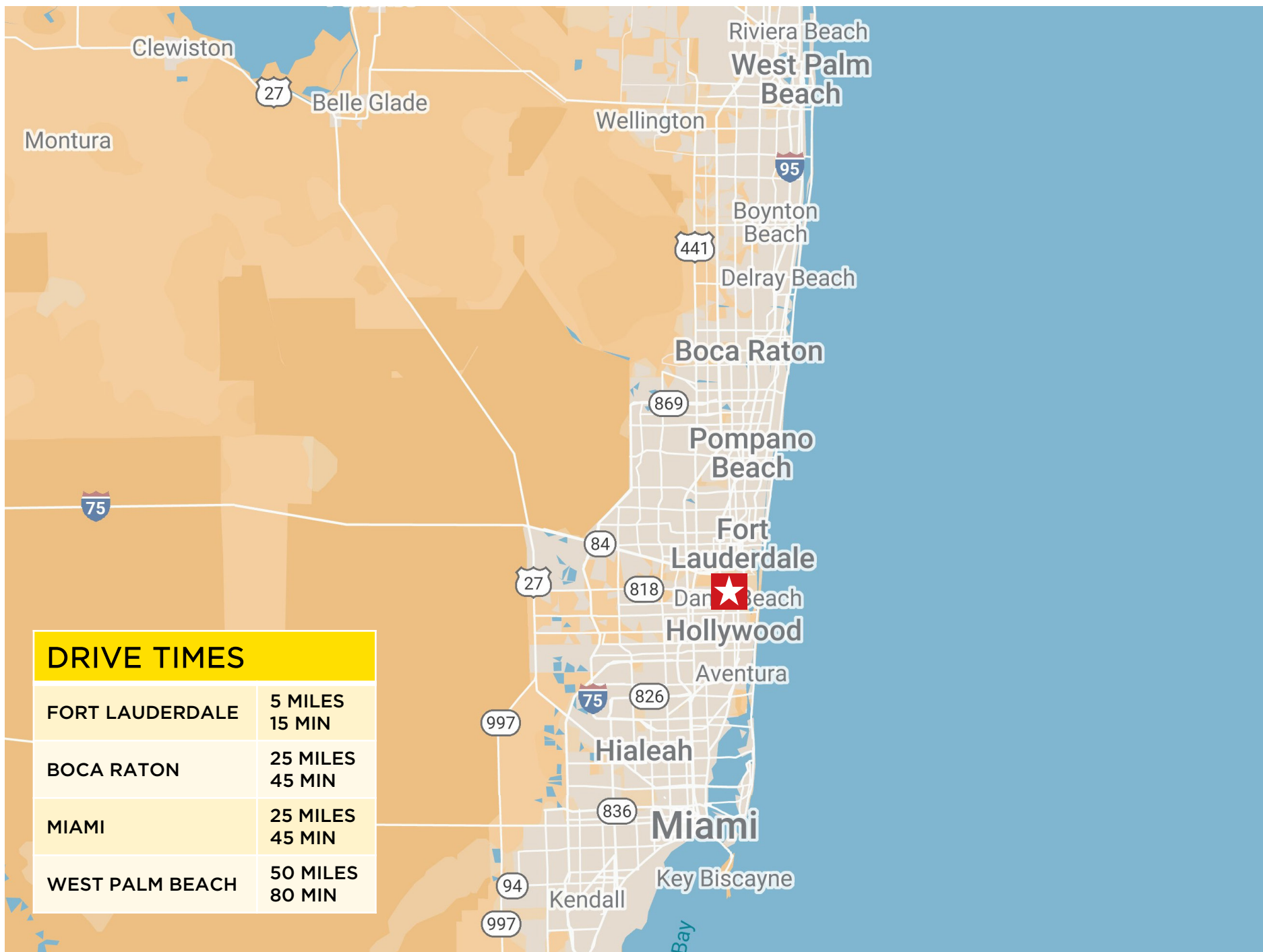
8,847 RSF - 27,640 RSF Available for Sublease



INTERIOR PHOTOS









## BLDG PHOTOS



**Thomas Capocefalo**  
Executive Managing Director  
+1 305 423 1924  
[tcapocefalo@savills.us](mailto:tcapocefalo@savills.us)

**Corbin Brailsford**  
Associate  
+1 305 423 1929  
[cbrailsford@savills.us](mailto:cbrailsford@savills.us)



© 2025 Savills. All rights reserved. The information contained in this communication has been obtained from a variety of sources believed to be reliable but has not been verified. NO WARRANTY OR REPRESENTATION, EXPRESS OR IMPLIED, IS MADE AS TO THE CONDITION OF THE PROPERTY OR ACCURACY OR COMPLETENESS OF THE INFORMATION CONTAINED HEREIN AND SAME IS SUBMITTED SUBJECT TO ERRORS, OMISSIONS, CHANGE OF PRICE, RENTAL OR OTHER CONDITIONS, WITHDRAWAL WITHOUT NOTICE AND TO ANY SPECIFIC CONDITIONS IMPOSED BY THE PROPERTY OWNER OR LESSOR.