



**COLDWELL
BANKER
COMMERCIAL**
ELITE

SNOWDEN ST OFFICE BUILDING

\$20.00 SF/yr (NNN)

1210 Snowden Street
Fredericksburg, VA 22401

AVAILABLE SPACE
2,550 SF

FEATURES

- Freestanding Office for Lease
- 2,550 SF, Recently Renovated
- Highly Visible with great access
- Situated next to University of Mary Washington
- Less than 2 miles from I-95 via exit 130

AREA

Located in the City of Fredericksburg at the corner of US Route 1 and Snowden Street. Great Visibility and right in/right out access from US Route 1. Situated across the street from Eagle Village shopping center and adjacent to the University of Mary Washington campus. Less than 2 miles from Interstate 95 via exit 130/Fredericksburg. Close proximity to Mary Washington Hospital, Historic Downtown Fredericksburg and shopping/dining at Central Park. 30,000 VPD on US Route 1.



FOR LEASE

CBCWORLDWIDE.COM

OFFICE

Ben Keddie, SIOR, CCIM
540.786.1402
bkeddie@cbcommercial.com

©2023 Coldwell Banker. All Rights Reserved. Coldwell Banker Commercial® and the Coldwell Banker Commercial logos are trademarks of Coldwell Banker Real Estate LLC. The Coldwell Banker® System is comprised of company owned offices which are owned by a subsidiary of Anywhere Advisors LLC and franchised offices which are independently owned and operated. The Coldwell Banker System fully supports the principles of the Equal Opportunity Act.

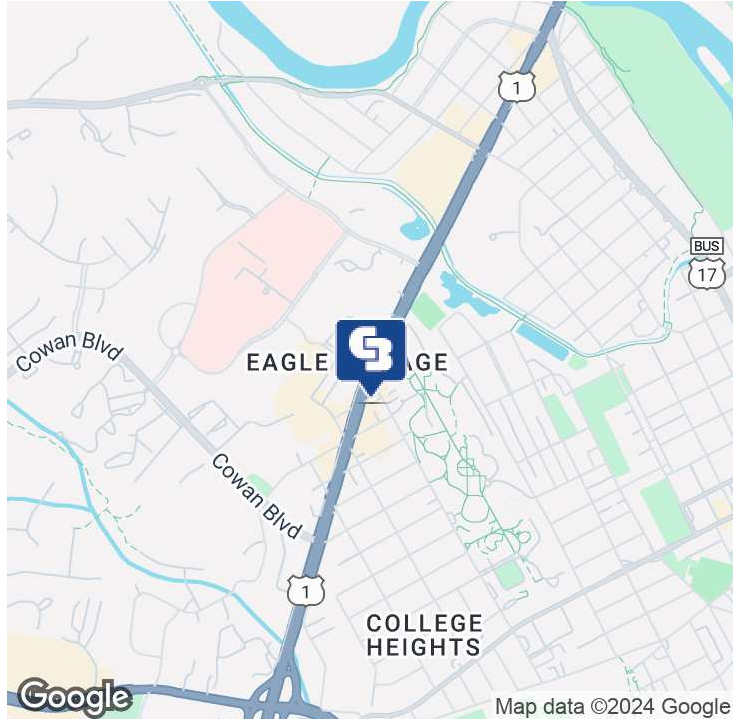
**COLDWELL BANKER COMMERCIAL
ELITE**
990 Bragg Rd, Fredericksburg, VA 22407
540.786.1402



SNOWDEN ST OFFICE BUILDING

1210 Snowden Street, Fredericksburg, VA 22401

LEASE



OFFERING SUMMARY

Available SF:	2,550 SF
Lease Rate:	\$20.00 SF/yr (NNN)
Lot Size:	0.32 Acres
Year Built:	1949
Building Size:	2,550 SF
Zoning:	CH- Commercial Highway
Market:	Greater Fredericksburg Region
Traffic Count:	30,000

PROPERTY OVERVIEW

Freestanding Office Building available for Lease in the City of Fredericksburg. Appx 2,550 SF with frontage and visibility from US Route 1. Recently Renovated!

LOCATION OVERVIEW

Located in the City of Fredericksburg at the corner of US Route 1 and Snowden Street. Great Visibility and right in/right out access from US Route 1. Situated across the street from Eagle Village shopping center and adjacent to the University of Mary Washington campus. Less than 2 miles from Interstate 95 via exit 130/Fredericksburg. Close proximity to Mary Washington Hospital, Historic Downtown Fredericksburg and shopping/dining at Central Park. 30,000 VPD on US Route 1.

PROPERTY HIGHLIGHTS

- Freestanding Office for Lease
- 2,550 SF, Recently Renovated
- Highly Visible with great access
- Situated next to University of Mary Washington
- Less than 2 miles from I-95 via exit 130

CBCWORLDWIDE.COM

Ben Keddie, SIOR, CCIM
540 786 1402
bkeddie@cbcommercial.com





SNOWDEN ST OFFICE BUILDING

1210 Snowden Street, Fredericksburg, VA 22401

LEASE



CBCWORLDWIDE.COM

Ben Keddie, SIOR, CCIM
540 786 1402
bkeddie@cbcommercial.com

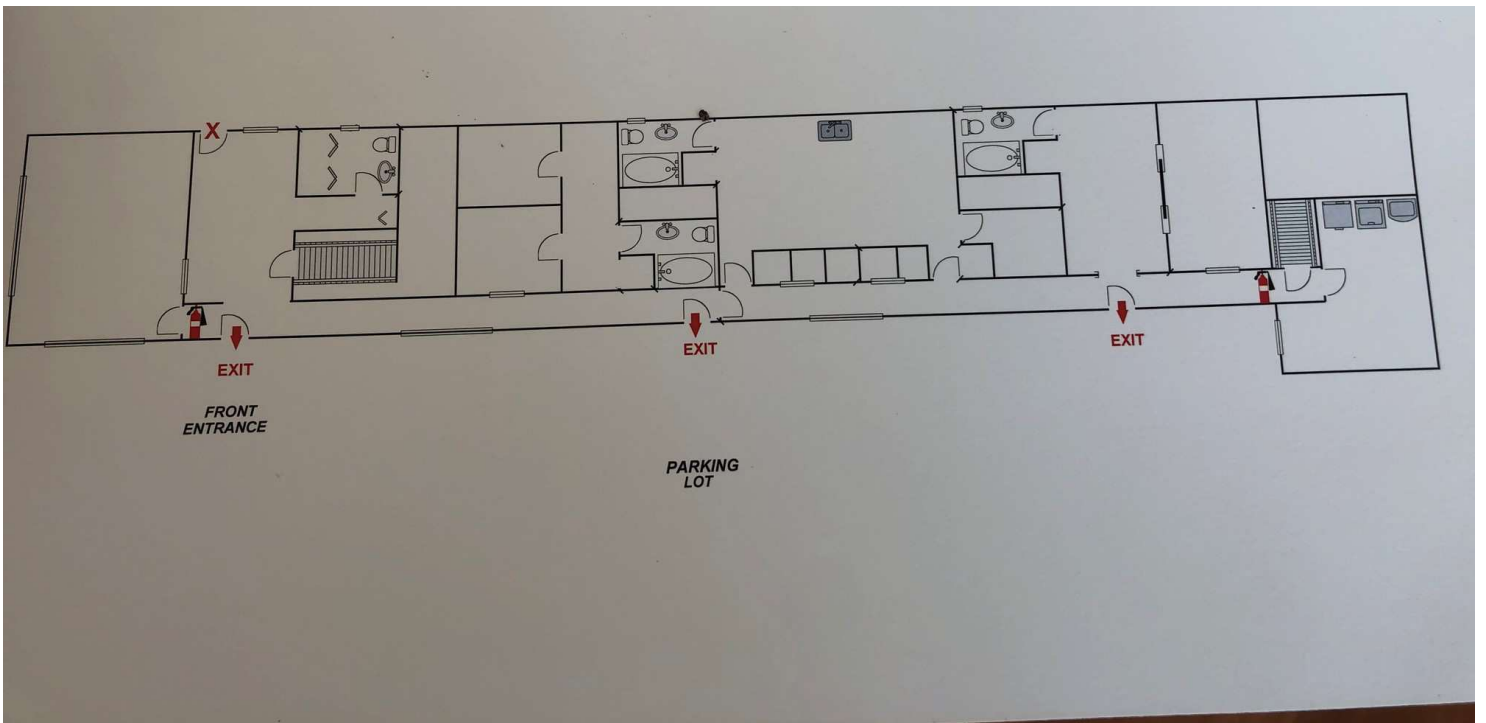




SNOWDEN ST OFFICE BUILDING

1210 Snowden Street, Fredericksburg, VA 22401

LEASE



CBCWORLDWIDE.COM

Ben Keddie, SIOR, CCIM
540 786 1402
bkeddie@cbcommercial.com



COLDWELL
BANKER
COMMERCIAL

ELITE



SNOWDEN ST OFFICE BUILDING

1210 Snowden Street, Fredericksburg, VA 22401

LEASE



CBCWORLDWIDE.COM

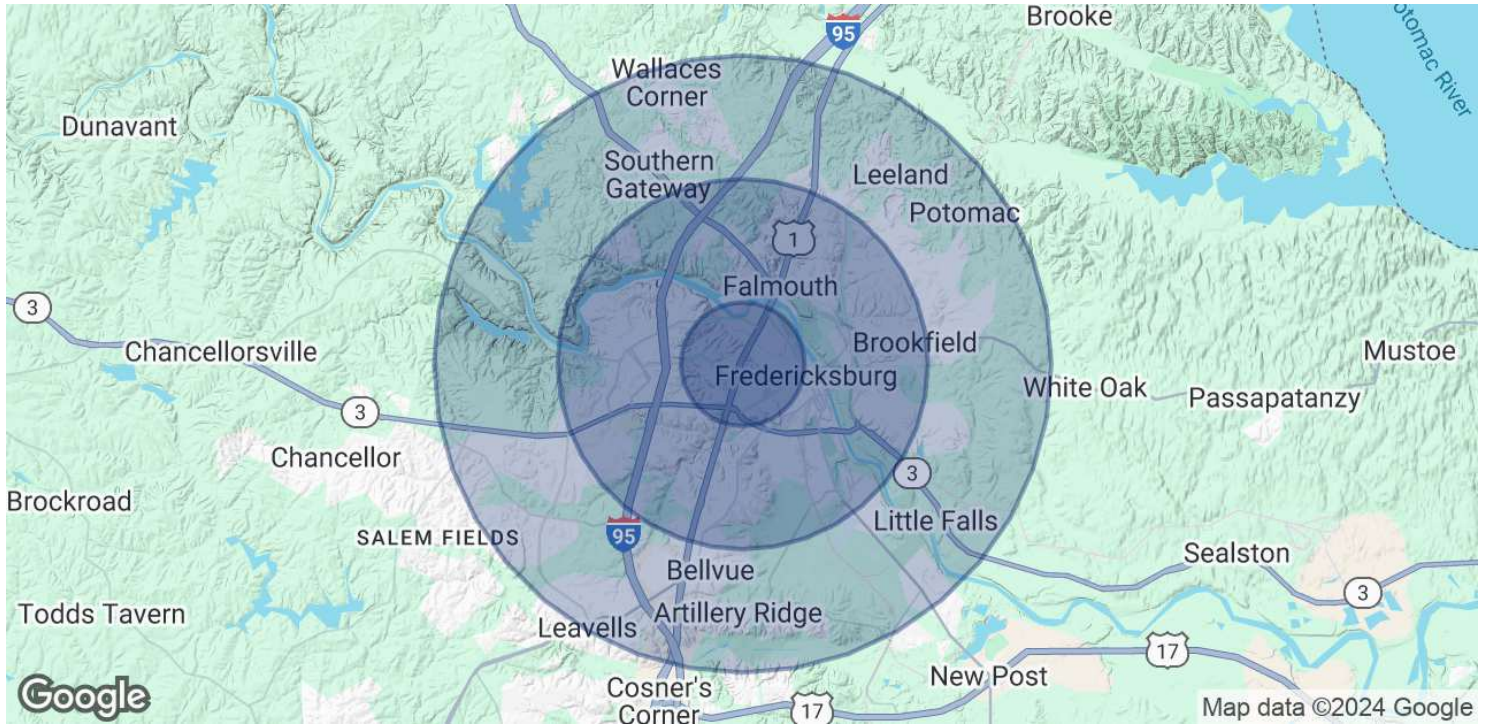
Ben Keddie, SIOR, CCIM
 540 786 1402
 bkeddie@cbcommercial.com

 **COLDWELL
 BANKER
 COMMERCIAL**
 ELITE



SNOWDEN ST OFFICE BUILDING

1210 Snowden Street, Fredericksburg, VA 22401



POPULATION	1 MILE	3 MILES	5 MILES
Total Population	11,283	45,852	97,439
Average Age	30.5	33.6	35.2
Average Age (Male)	30.1	32.6	34.3
Average Age (Female)	31.0	34.3	36.0
HOUSEHOLDS & INCOME	1 MILE	3 MILES	5 MILES
Total Households	3,951	17,364	35,777
# of Persons per HH	2.9	2.6	2.7
Average HH Income	\$63,351	\$75,665	\$81,650
Average House Value	\$546,237	\$384,830	\$335,621

* Demographic data derived from 2020 ACS - US Census

CBCWORLDWIDE.COM

Ben Keddie, SIOR, CCIM
540 786 1402
bkeddie@cbcommercial.com

