

# 128 Auburn Ct, Suite 206A

Westlake Village, CA 91362

**NAI Capital**  
COMMERCIAL REAL ESTATE SERVICES, WORLDWIDE



## SUBLEASE AVAILABLE

**Evelyn Hamilton**

818.742.1646

[ehamilton@naicapital.com](mailto:ehamilton@naicapital.com)

CA DRE #01925029

No warranty, express or implied, is made as to the accuracy of the information contained herein. This information is submitted subject to errors, omissions, change of price, rental or other conditions, withdrawal without notice, and is subject to any special listing conditions imposed by our principals. Cooperating brokers, buyers, tenants and other parties who receive this document should not rely on it, but should use it as a starting point of analysis, and should independently confirm the accuracy of the information contained herein through a due diligence review of the books, records, files and documents that constitute reliable sources of the information described herein. Logos are for identification purposes only and may be trademarks of their respective companies. NAI Capital Commercial, Inc. CAL DRE Lic. #02130474



## PROPERTY OVERVIEW

Therapists subleasing a private office within his suite. Fully furnished beautiful psychotherapy office with NEW designer furnishings designed by Hollywood set-designer, including a cabinet which converts to a desk. This is a new therapy room with a lovely view. The waiting room is almost always empty so your clients would enjoy great privacy.

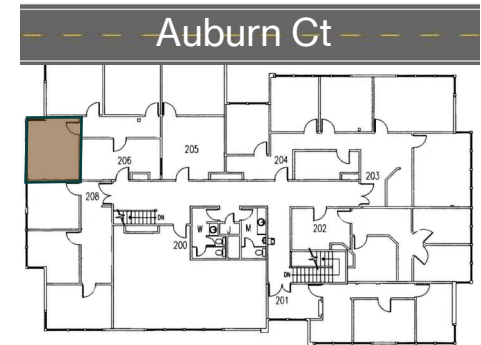
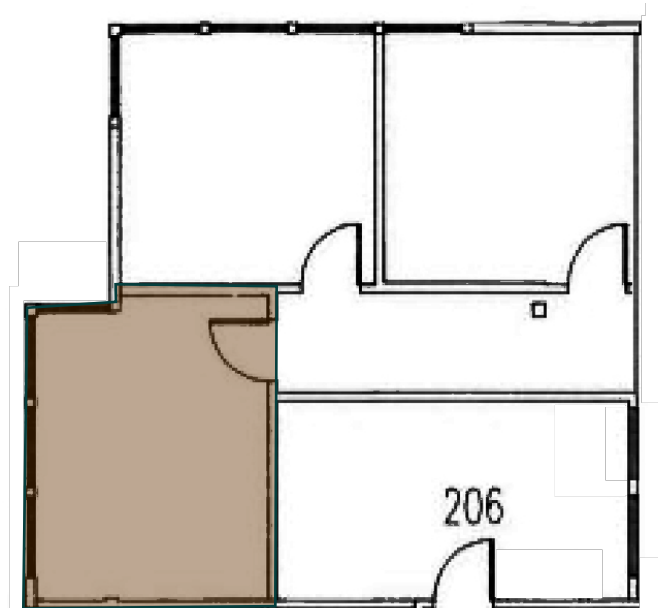
Located in a quiet, professional medical complex near Thousand Oaks Auto Mall.

## AVAILABILITY

FLOOR	SUITE	SIZE	RATE	AVAILABILITY
2	206A	244 RSF	\$770/MO, MG	VACANT

# HEATHERLY BUILDING

128 Auburn Ct, Suite 206-A



## SUITE FEATURES

- ☐ 1 private therapy office with a shared waiting room
- ☐ Custom track lighting
- ☐ Fiber-optic fast WiFi included
- ☐ Rent includes utilities - tenant pays janitorial

\*Not to Scale

FLOOR	SUITE	SIZE	RATE	AVAILABILITY
2	208	244 RSF	\$770/MO, MG	VACANT

**Evelyn Hamilton**  
818.742.1646  
ehamilton@naicapital.com  
CA DRE #01925029

No warranty, express or implied, is made as to the accuracy of the information contained herein. This information is submitted subject to errors, omissions, change of price, rental or other conditions, withdrawal without notice, and is subject to any special listing conditions imposed by our principals. Cooperating brokers, buyers, tenants and other parties who receive this document should not rely on it, but should use it as a starting point of analysis, and should independently confirm the accuracy of the information contained herein through a due diligence review of the books, records, files and documents that constitute reliable sources of the information described herein. Logos are for identification purposes only and may be trademarks of their respective companies. NAI Capital Commercial, Inc. CAL DRE Lic. #02130474

# HEATHERLY BUILDING

128 Auburn Ct, Suite 206-A



**Evelyn Hamilton**  
818.742.1646  
ehamilton@naicapital.com  
CA DRE #01925029

No warranty, express or implied, is made as to the accuracy of the information contained herein. This information is submitted subject to errors, omissions, change of price, rental or other conditions, withdrawal without notice, and is subject to any special listing conditions imposed by our principals. Cooperating brokers, buyers, tenants and other parties who receive this document should not rely on it, but should use it as a starting point of analysis, and should independently confirm the accuracy of the information contained herein through a due diligence review of the books, records, files and documents that constitute reliable sources of the information described herein. Logos are for identification purposes only and may be trademarks of their respective companies. NAI Capital Commercial, Inc. CAL DRE Lic. #02130474