



AVAILABLE FOR LEASE
130 S ORANGE AVE, ORLANDO, FL

THE KRESS BUILDING



A HISTORICAL LANDMARK

Built in the 1930s by famed retailer Samuel H. Kress, this distinguished Art Deco landmark once served as a cornerstone of Orlando's vibrant retail corridor. Now beautifully restored and listed on the National Register of Historic Places, this iconic property blends timeless Art Deco charm with modern functionality for today's premier office and retail tenants.



STREET FRONT SIGNAGE AVAILABLE



DOWNTOWN ORLANDO BY THE NUMBERS

21,350

RESIDENTIAL POPULATION

4,990

BUSINESSES

96,590

DAYTIME POPULATION

PROPERTY FEATURES

- Located in the heart of Downtown Orlando
- Building Conference Room (with 20-foot ceilings)
- Property Management and Ownership on-site
- Private elevator lobby
- Abundant natural light
- National Historic Registry building
- On-site fine dining amenity – Kres Chophouse
- Renovated exterior in 2024



KRES CHOPHOUSE

Creative & modern, while still honoring the classics, Kres Chophouse is an independent steakhouse that crosses the traditional boundaries to deliver extraordinary value and a “historic” dining experience.



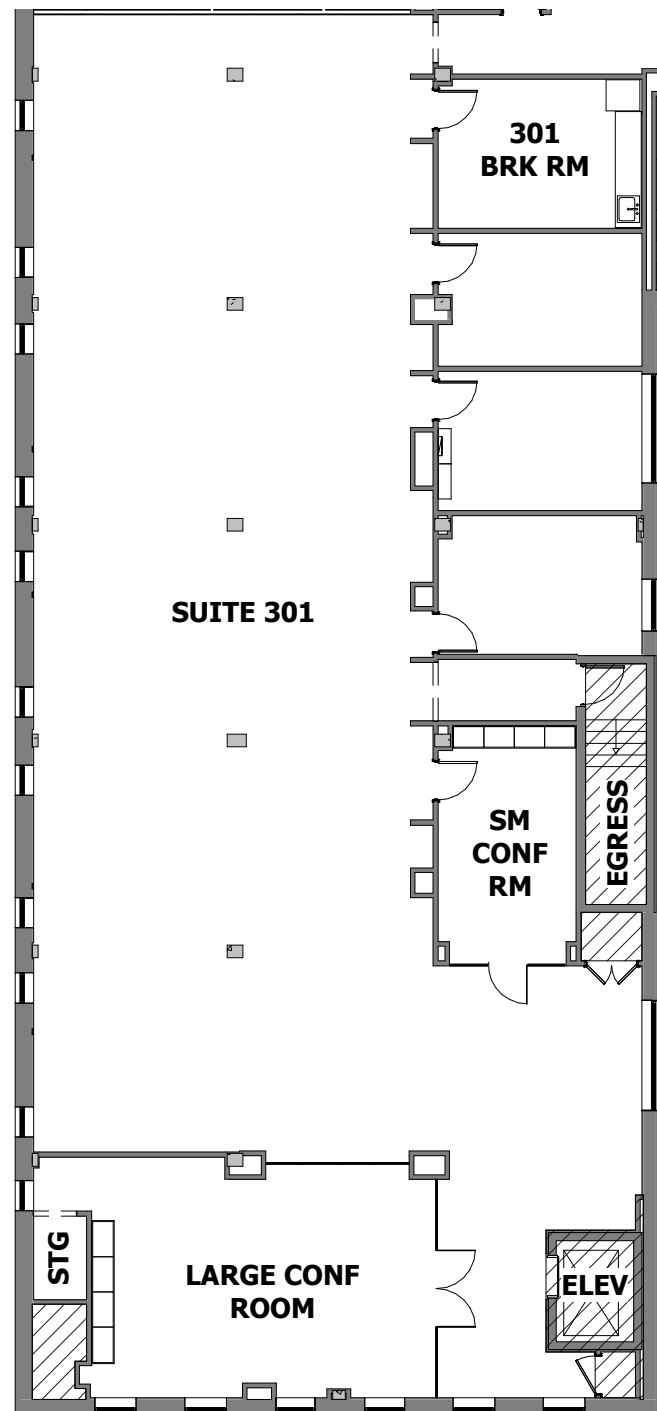
ORLANDO'S BEST STEAKHOUSE, LOCATED ON THE GROUND FLOOR

LOCATION



FLOOR PLAN

SUITE 301
5,700 SF AVAILABLE (EXPANDABLE UP TO 8,068 SF)



INTERIOR PHOTOS



FOR MORE INFORMATION

KEVIN WILL

407-458-5888

kevin.will@foundrycommercial.com

ALEX ROSARIO

407-540-7713

alex.rosario@foundrycommercial.com