

1400 Glenarm Place | Suite 301

Denver, Colorado 80202

Property Overview

- Newly built-out office suite available for lease
- Interior building renovations recently completed including elevators and lobbies
- On-site ownership and management
- Two blocks from 16th Street Mall
- Easy access in and out of Downtown
- Close proximity to Denver municipal buildings, courthouse, and Federal Center

Lease Rate: \$25.00-27.00/SF FSG

Property Facts

Available SF:	4,256 SF
Building SF:	39,804 SF
Year Built / Renovated	1924 / 2010

For more information:

Ana Sandomire

303 565 3029

asandomire@shamesmakovsky.com

Peter Knisely

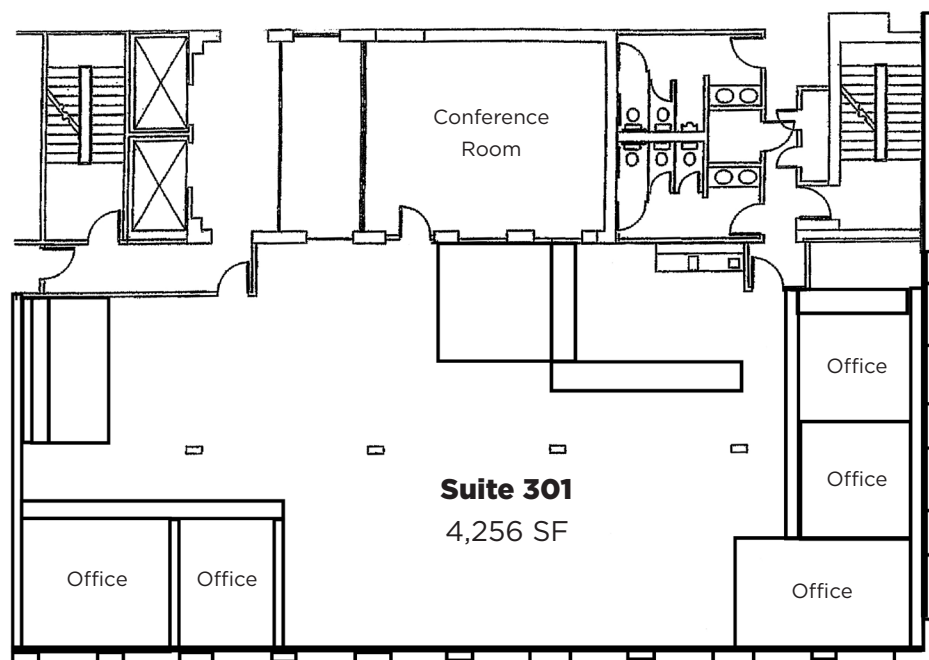
720 881 7534

pknisely@shamesmakovsky.com

NO WARRANTY OR REPRESENTATION, EXPRESS OR IMPLIED, IS MADE AS TO THE ACCURACY OF THE INFORMATION CONTAINED HEREIN, AND THE SAME IS SUBMITTED SUBJECT TO ERRORS, OMISSIONS, CHANGE OF PRICE, RENTAL OR OTHER CONDITIONS, PRIOR SALE, LEASE OR FINANCING, OR WITHDRAWAL WITHOUT NOTICE, AND OF ANY SPECIAL LISTING CONDITIONS IMPOSED BY OUR PRINCIPALS NO WARRANTIES OR REPRESENTATIONS ARE MADE AS TO THE CONDITION OF THE PROPERTY OR ANY HAZARDS CONTAINED THEREIN ARE ANY TO BE IMPLIED.

FOR LEASE

SUITE 301



FOR LEASE

1400 Glenarm Pl.

Denver, CO 80205



WITHIN 1/2 MILE WALK

99

WALK
SCORE

94

TRANSIT
SCORE

95

BIKE
SCORE



CHIPOTLE

Little Owl
DENVER COFFEE



SNARF'S
Sandwiches



もと巻 **motomaki.**

WITHIN 1 MILE WALK

75+

RESTAURANTS

34

HOTELS

50+

RETAIL
SHOPS

50+

PARKING
OPTIONS

5

LIGHT RAIL
STATIONS

Ana Sandomire

303 565 3029

asandomire@shamesmakovsky.com

Peter Knisely

720 881 7534

pknisely@shamesmakovsky.com

NAI Shames Makovsky