

GENERAL DEMOLITION NOTES:

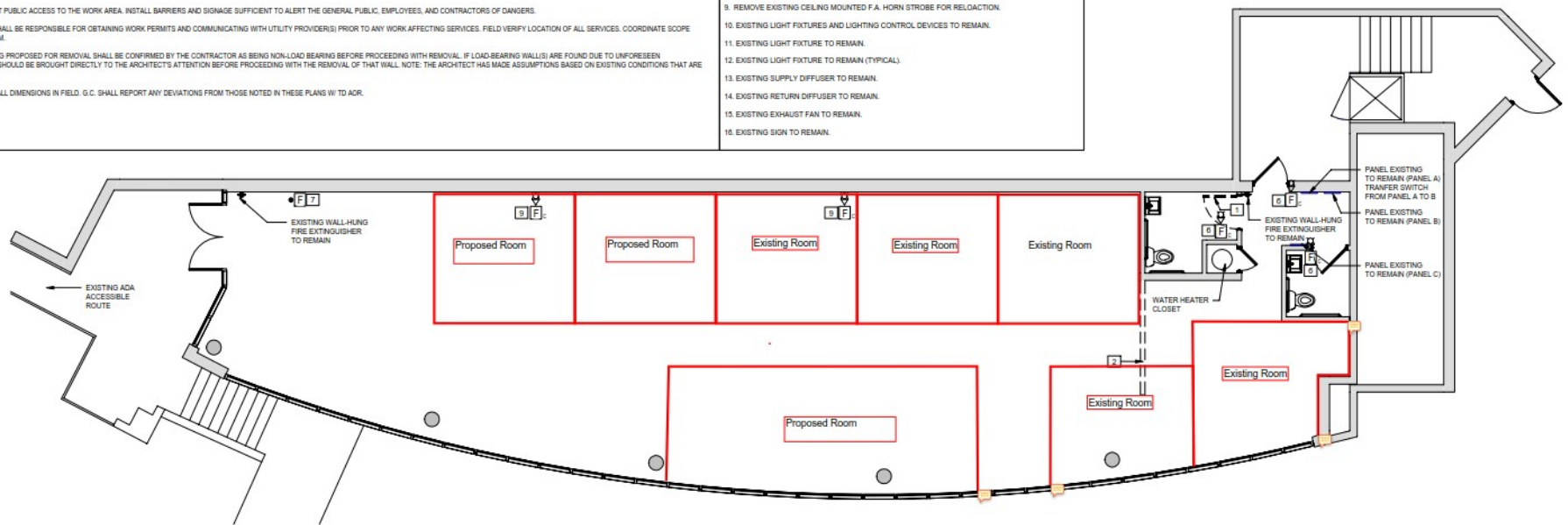
- G.C. TO COORDINATE AND ARRANGE FOR PRE-CONSTRUCTION PHASING COORDINATION MEETINGS WITH TENANT PRIOR TO DEMOLITION START.
- G.C. IS RESPONSIBLE TO COORDINATE WITH ALL VENDORS AND APPLICABLE TRADES TIMING AND SEQUENCE FOR WORK DEFINED WITHIN THE CONTRACT DOCUMENT SET AND IN ACCORDANCE WITH TO BANK MARKET REQUIREMENTS. MATERIALS TO BE PROVIDED TO GC FOR REFERENCE WHEN NEEDED.
- THESE DRAWINGS MAY NOT INDICATE THE FULL EXTENT OF THE WORK AND DETAILS REQUIRED TO COMPLETE THIS PROJECT. THE ARCHITECT HAS MADE ASSUMPTIONS BASED ON EXISTING CONDITIONS THAT WERE VISIBLE AT THE TIME OF SURVEY. G.C. IS TO VERIFY EXISTING CONDITIONS AND OVERALL DIMENSIONS FOR THE FULL EXTENT OF THE WORK REQUIRED TO COMPLETE THIS PROJECT IN A WORKMANLIKE MANNER PER ALL APPLICABLE CODES AND THESE DRAWINGS. COORDINATE WORK WITH THE TO PROJECT MANAGER PRIOR TO SUBMISSION OF BID.
- DEMOLISH EXISTING CONSTRUCTION ONLY TO THE EXTENT NECESSARY TO COMPLETE THE NEW CONSTRUCTION. CUT BACK EXISTING FINISHED SURFACES TO SQUARE, LEVEL, AND PLUMB LINES.
- CAREFULLY REVIEW PLANS AND DETERMINE UTILITIES THAT ARE REQUIRED TO BE DISCONNECTED AND THOSE THAT WILL REMAIN FUNCTIONAL. COORDINATE WORK WITH THE APPROPRIATE UTILITY PROVIDER. SCHEDULE WORK FOR A MINIMUM OF INTERRUPTION.
- COORDINATE AND SECURE ALL GAS, PLUMBING, ELECTRICAL, AND OTHER UTILITIES ASSOCIATED WITH EQUIPMENT TO BE REMOVED AND OR INSTALLED ON SITE. INSTALL REQUIRED MATERIALS TO SECURE AND MAKE SAFE ALL UTILITIES TO REMAIN.
- G.C. TO PREVENT PUBLIC ACCESS TO THE WORK AREA. INSTALL BARRIERS AND SIGNAGE SUFFICIENT TO ALERT THE GENERAL PUBLIC, EMPLOYEES, AND CONTRACTORS OF DANGERS.
- CONTRACTOR SHALL BE RESPONSIBLE FOR OBTAINING WORK PERMITS AND COMMUNICATING WITH UTILITY PROVIDER(S) PRIOR TO ANY WORK AFFECTING SERVICES. FIELD VERIFY LOCATION OF ALL SERVICES. COORDINATE SCOPE WITH TO BANK CM.
- ANY WALLS BEING PROPOSED FOR REMOVAL SHALL BE CONFIRMED BY THE CONTRACTOR AS BEING NON-LOAD BEARING BEFORE PROCEEDING WITH REMOVAL. IF LOAD-BEARING WALL(S) ARE FOUND DUE TO UNFORESEEN CONDITIONS, IT SHOULD BE BROUGHT DIRECTLY TO THE ARCHITECT'S ATTENTION BEFORE PROCEEDING WITH THE REMOVAL OF THAT WALL. NOTE: THE ARCHITECT HAS MADE ASSUMPTIONS BASED ON EXISTING CONDITIONS THAT ARE VISIBLE.
- G.C. TO VERIFY ALL DIMENSIONS IN FIELD. G.C. SHALL REPORT ANY DEVIATIONS FROM THOSE NOTED IN THESE PLANS W/ TO AOR.

KEYED NOTES:

- DEMO INTERIOR DOOR, FRAME AND HARDWARE IN IT'S ENTIRETY.
- DEMO EXISTING GWB WALL PARTITION TO EXTENT INDICATED.
- DEMO EXISTING DROP SOFFIT AND ACT GRID SYSTEM, HVAC DIFFUSERS, AND PREP FOR INSTALLATION OF NEW CEILING GRID AND ACT TILES. DISCONNECT AND REMOVE EXISTING LIGHT FIXTURE AND RETAIN FOR RE-INSTALLATION. MAINTAIN CIRCUITS FOR REUSE. REFER TO PROPOSED RCP FOR LOCATION OF RELOCATED LIGHT FIXTURES.
- DEMO EXISTING EXIT SIGN AND RELOCATE. REFER TO PROPOSED RCP FOR NEW LOCATION.
- EXISTING F.A. HORN STROBE TO REMAIN.
- EXISTING F.A. PULL STATION TO REMAIN.
- EXISTING CEILING MOUNTED F.A. HORN STROBE TO REMAIN.
- REMOVE EXISTING CEILING MOUNTED F.A. HORN STROBE FOR RELOCATION.
- EXISTING LIGHT FIXTURES AND LIGHTING CONTROL DEVICES TO REMAIN.
- EXISTING LIGHT FIXTURE TO REMAIN.
- EXISTING LIGHT FIXTURE TO REMAIN (TYPICAL).
- EXISTING SUPPLY DIFFUSER TO REMAIN.
- EXISTING RETURN DIFFUSER TO REMAIN.
- EXISTING EXHAUST FAN TO REMAIN.
- EXISTING SIGN TO REMAIN.

LEGEND

-  F.A. HORNSTROBE
 F.A. PULLSTATION



1 FIRST FLOOR DEMOLITION PLAN
SCALE: 3/16" = 1'-0"