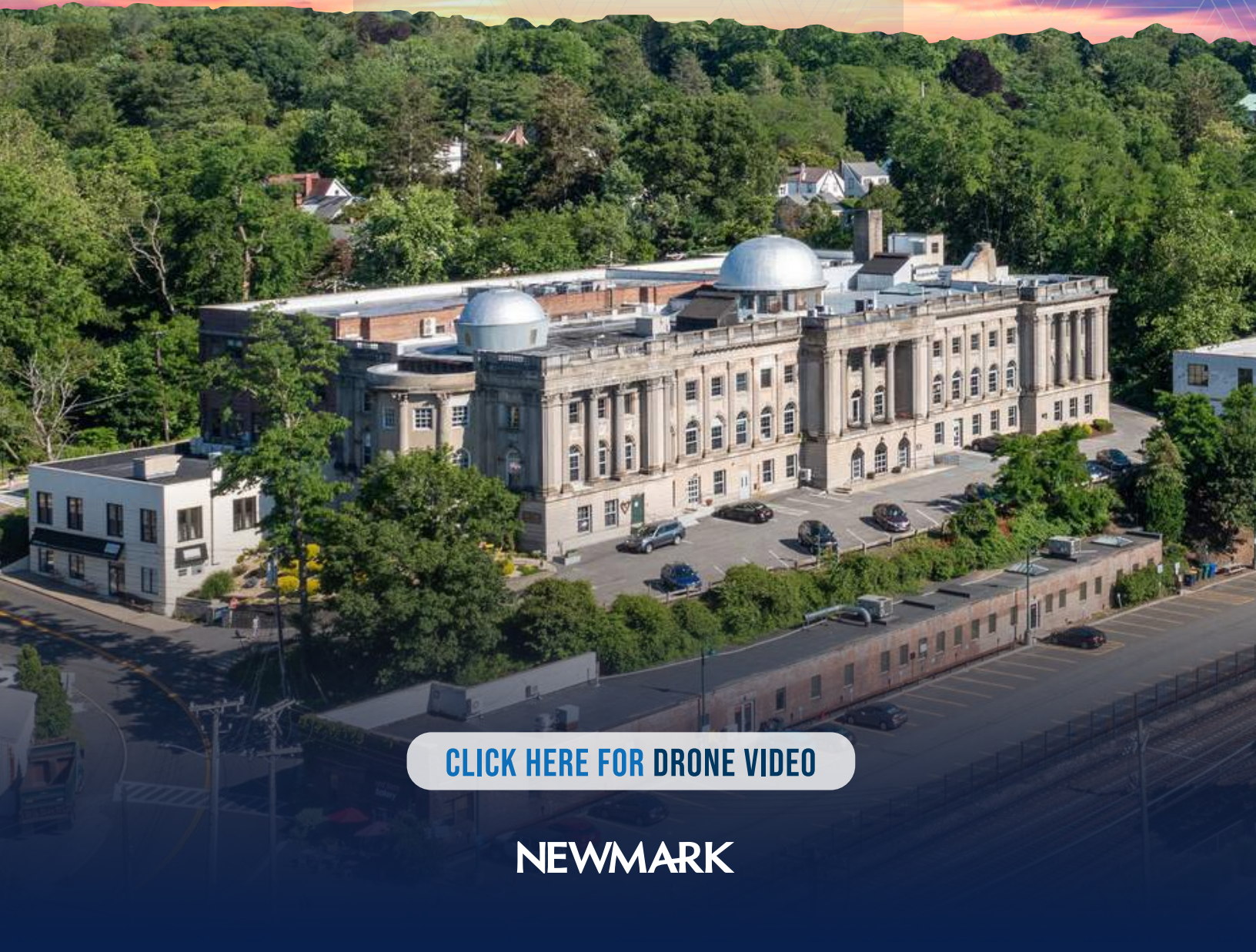


OFFICE SPACE THAT INSPIRES



THE COSMOPOLITAN

50 SOUTH BUCKHOUT STREET  
IRVINGTON, NEW YORK



[CLICK HERE FOR DRONE VIDEO](#)

NEWMARK



# PROPERTY OVERVIEW


**50 South Buckhout Street** is located in Irvington, New York; a charming village in Westchester County. It's known for its picturesque setting along the Hudson River and a rich history dating back to the 17th century.

## SPECIFICATIONS

- **Available:** 1,400 - 9,000 RSF (Can Combine for Larger Spaces)
- **Asking rent:** Upon Request
- **Possession:** Immediate
- **Term:** 3-10 Years

## HIGHLIGHTS

- Spectacular Views of the Hudson River
- Abundance of Natural Light
- Stunning Historical Neo-Classically Designed Building
- Easy Access from Interstate 287
- Short Walk to Neighboring Retail & Restaurants
- Enjoy Nearby Mattiessen Park
- Adjacent to Irvington Train Station (20 miles to Grand Central Terminal)

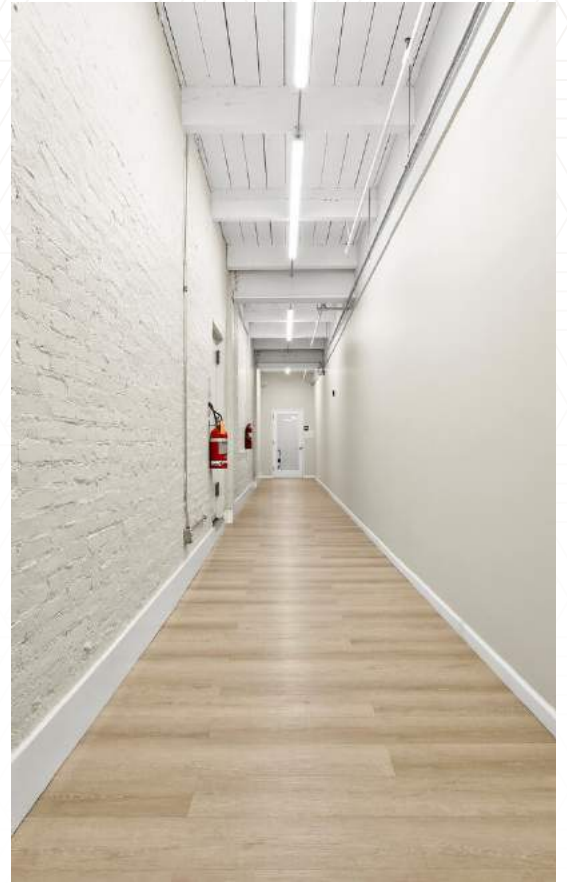


**Irvington Train Station  
only steps away!**

50 South Buckhout Street looking north towards the Hudson River with the Mario Cuomo Bridge off in the distance.



# CLASSIC AESTHETIC



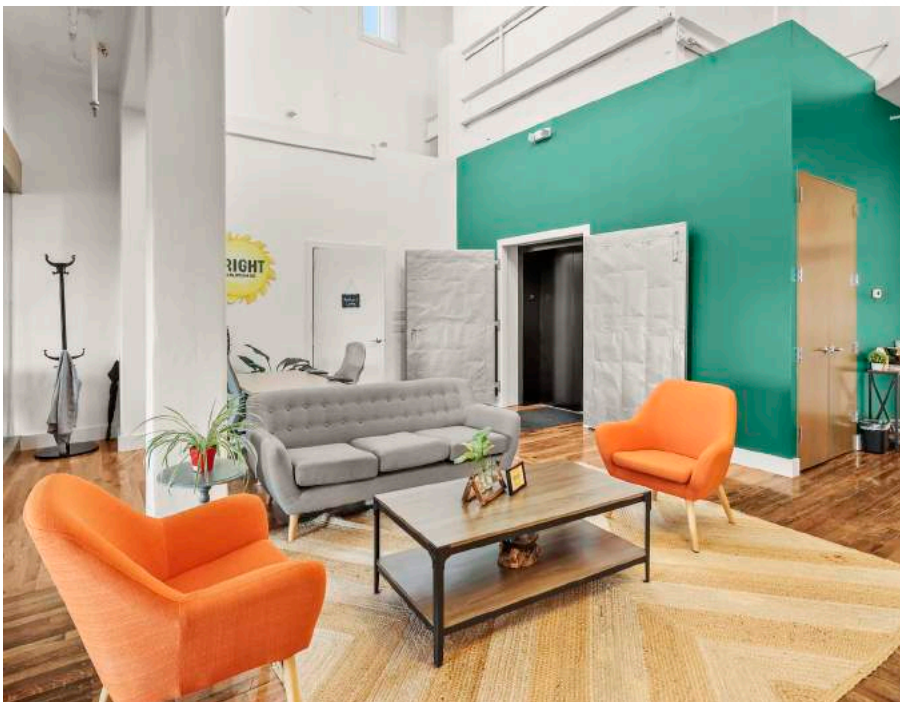


# INTERIOR IMAGES



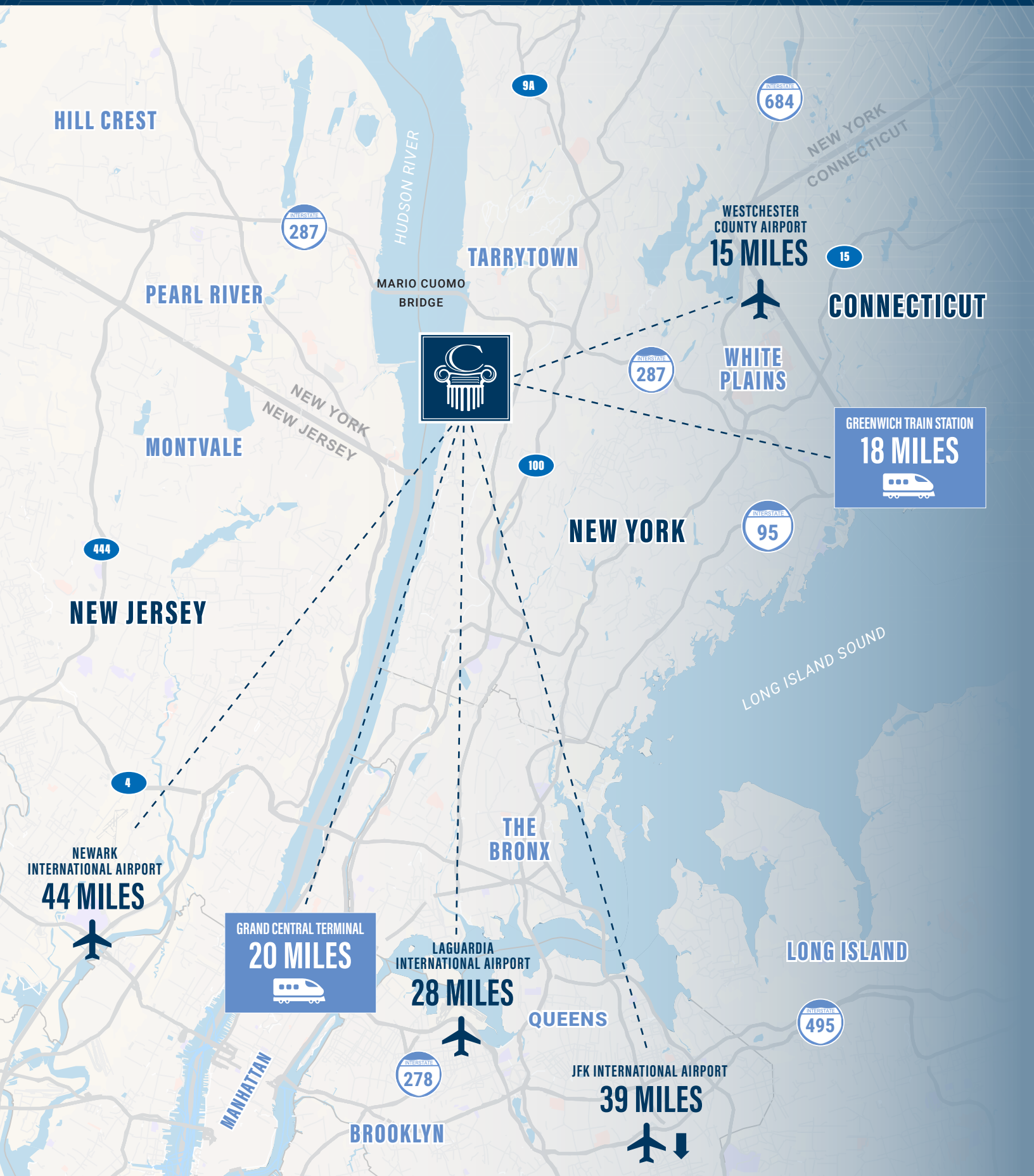


# INTERIOR IMAGES





# REGIONAL ACCESS



# ENJOY SCENIC IRVINGTON

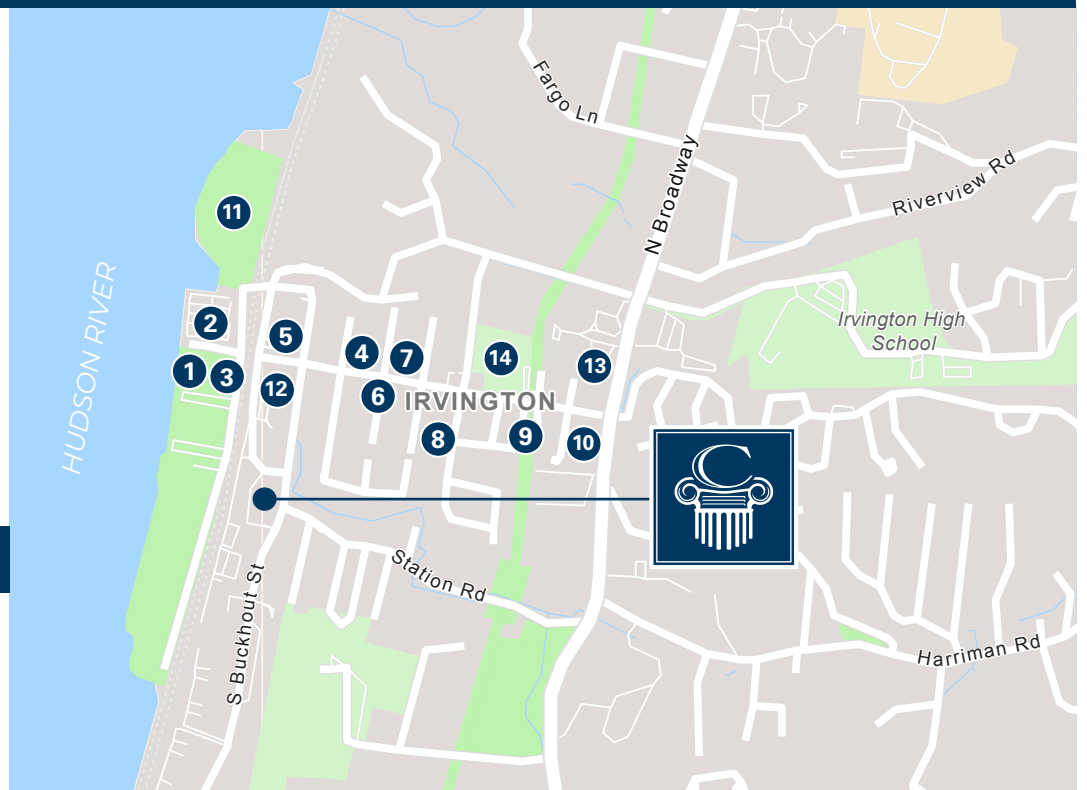


## RESTAURANTS

1. Red Hat on the River
2. Sambal Thai & Malay
3. MP Taverna
4. Kiku Sushi
5. Hudson Prime Steakhouse
6. FarmEats BBQ
7. La Chinita Poblana
8. Chutney Masala
9. Irvington Pizza Company
10. River City Grille

## RECREATION

11. Matthiessen Park
12. Irvington Public Library
13. Irvington Farmers Market
14. Irvington Town Hall Theatre





# FLOOR PLANS

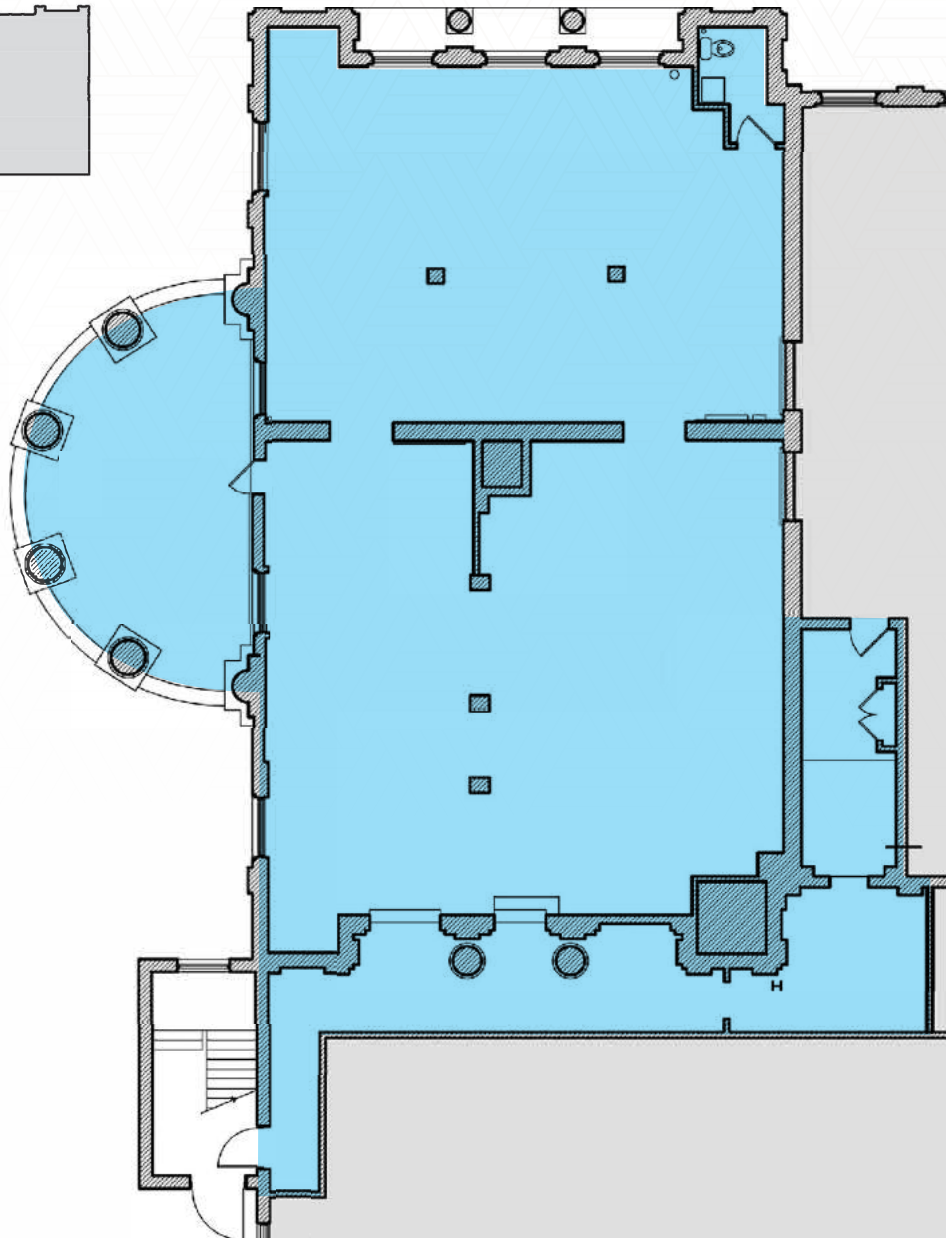
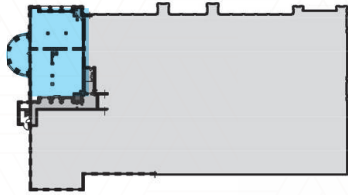
FIRST FLOOR: 4,236 RSF



THE COSMOPOLITAN

HUDSON RIVER

KEY PLAN





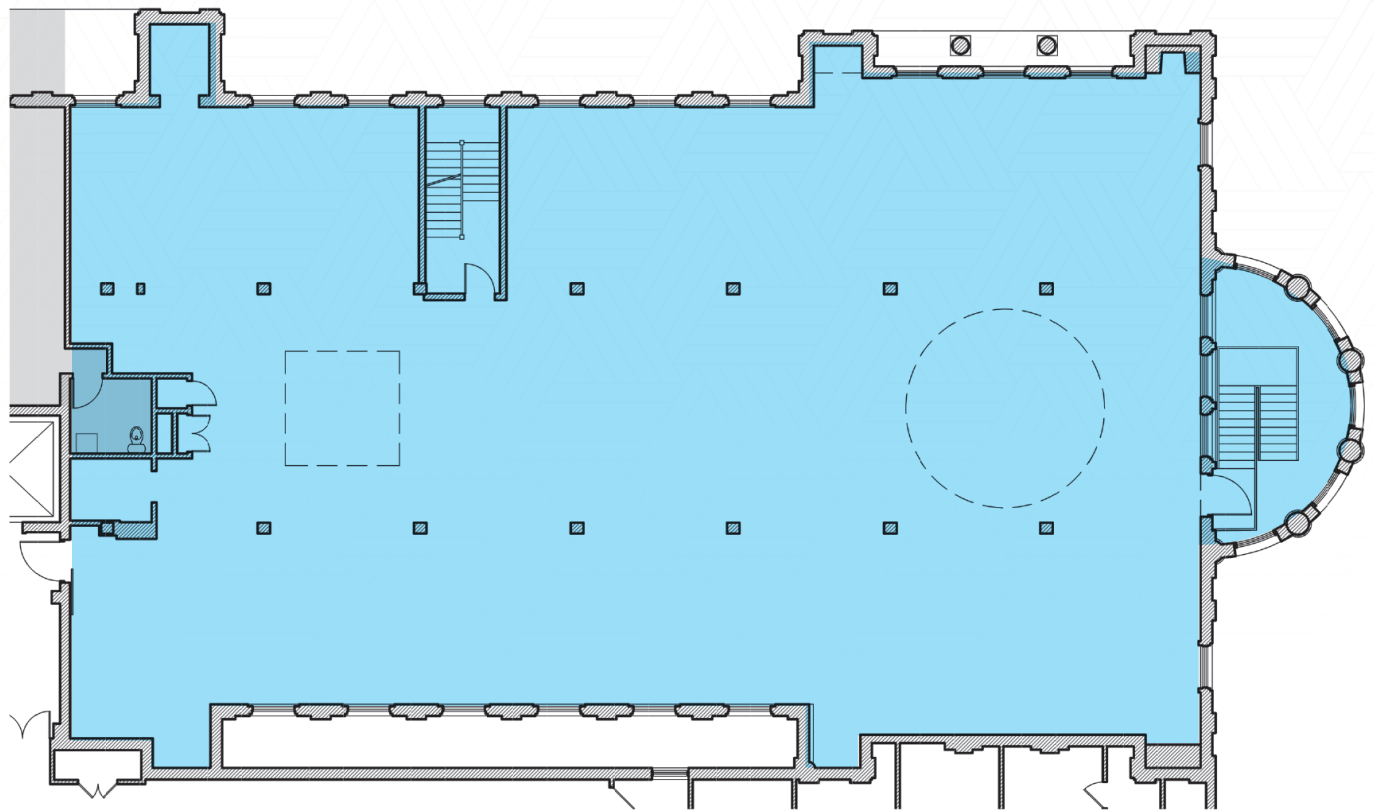
# FLOOR PLANS

SECOND FLOOR: 8,652 RSF



THE COSMOPOLITAN

HUDSON RIVER



KEY PLAN

