

Encon Commercial, Inc.

Commercial Real Estate Services

FOR
LEASE

**11721 TELEGRAPH ROAD, UNIT K
SANTA FE SPRINGS, CALIFORNIA**



**RARE OPPORTUNITY TO LEASE WITHIN THE HIGHLY DESIRABLE
BUSINESS COMMUNITY IN SANTA FE SPRINGS BUSINESS PARK**

PROPERTY HIGHLIGHTS

- 2,822 Square Feet
- 3 private offices, reception area, conference room, private restrooms and ~25% warehouse
- 2 ground level loading doors with drive around access
- Free on-site parking and 24-hour access
- Great visibility with building signage available
- Premier business destination with desirable amenities and unmatched connectivity to Los Angeles, Orange County and the Inland Empire
- Proximity to 5, 91, 605, 105 and 60 Freeways

CONTACT INFORMATION:



John Scatoloni
Managing Director
Cell: (310) 663-6688
DRE: 01780335



Angela Pan
Director
Cell: (909) 662-2552
DRE: 02016910

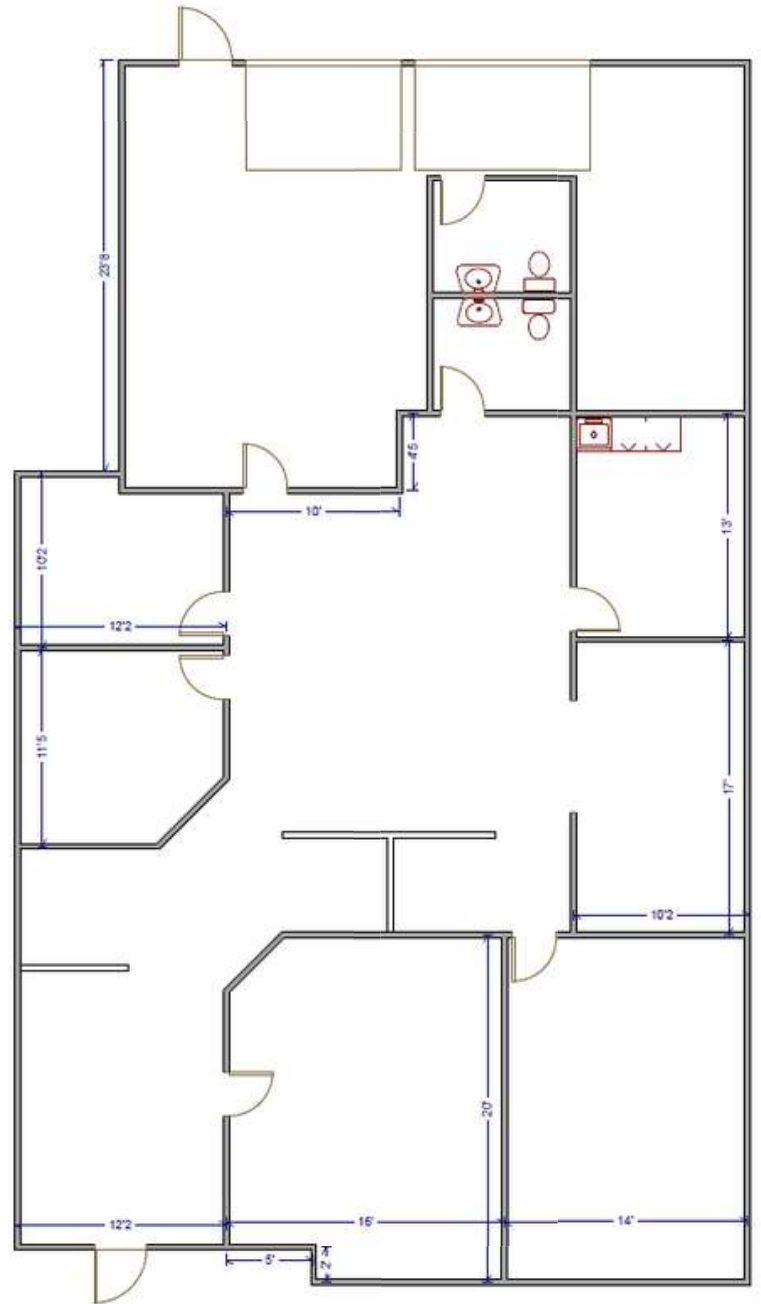


Jonathan Poto
Director
Cell: (562) 822-3590
DRE: 02280143

ENCON COMMERCIAL, INC.

12145 Mora Drive, Suite 7
Santa Fe Springs, California 90670

11721 TELEGRAPH ROAD, UNIT K, SANTA FE SPRINGS, CALIFORNIA



Site plan is approximate