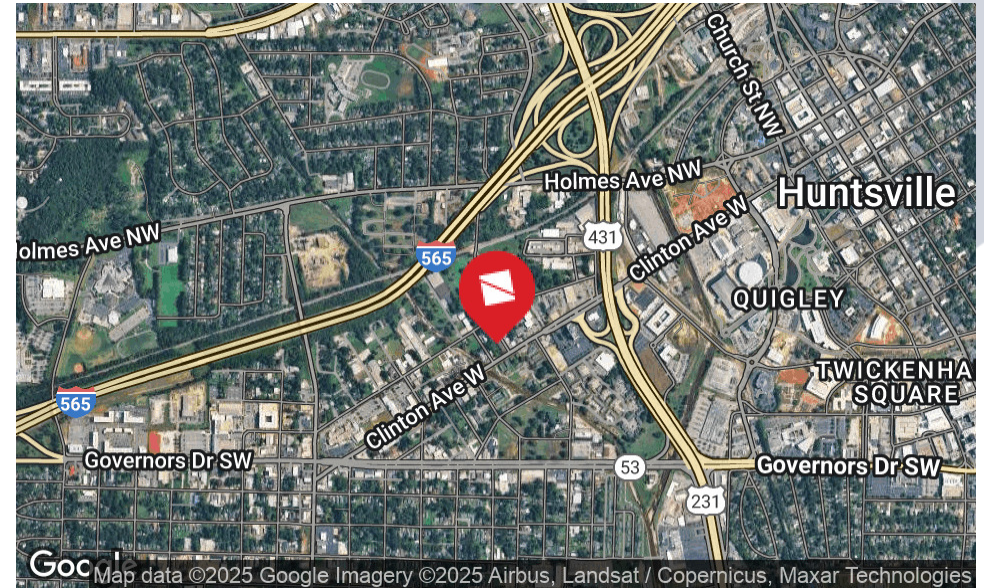


2216 Clinton Avenue West

Huntsville, AL 35804

FOR SALE

LAND



Offering Summary

Sale Price:	\$1,317,500
Lot Size:	± 1.2 Acres
Zoning:	Light Industry (LI)
Lot Frontage:	162'

Property Description

1.2-acre site featuring an existing 10,800 SF building in one of Huntsville's fastest-growing areas. The property offers excellent visibility and convenient access to Memorial Parkway and I-565, making it an exceptional opportunity for redevelopment or adaptive reuse in a highly desirable corridor.

Property Highlights

- Excellent investment or redevelopment opportunity
- Easy access to Memorial Parkway and I-565
- 0.5 miles from Campus 805
- Less than a mile from Stovewood and Downtown Huntsville
- In close proximity to the future Sky Bridge connection

Jim Smoot
Associate Broker
(256)-533-0003
jim@samplesproperties.com



2216 Clinton Avenue West

Huntsville, AL 35804

FOR SALE

LAND



Jim Smoot
Associate Broker
(256)-533-0003
jim@samplesproperties.com

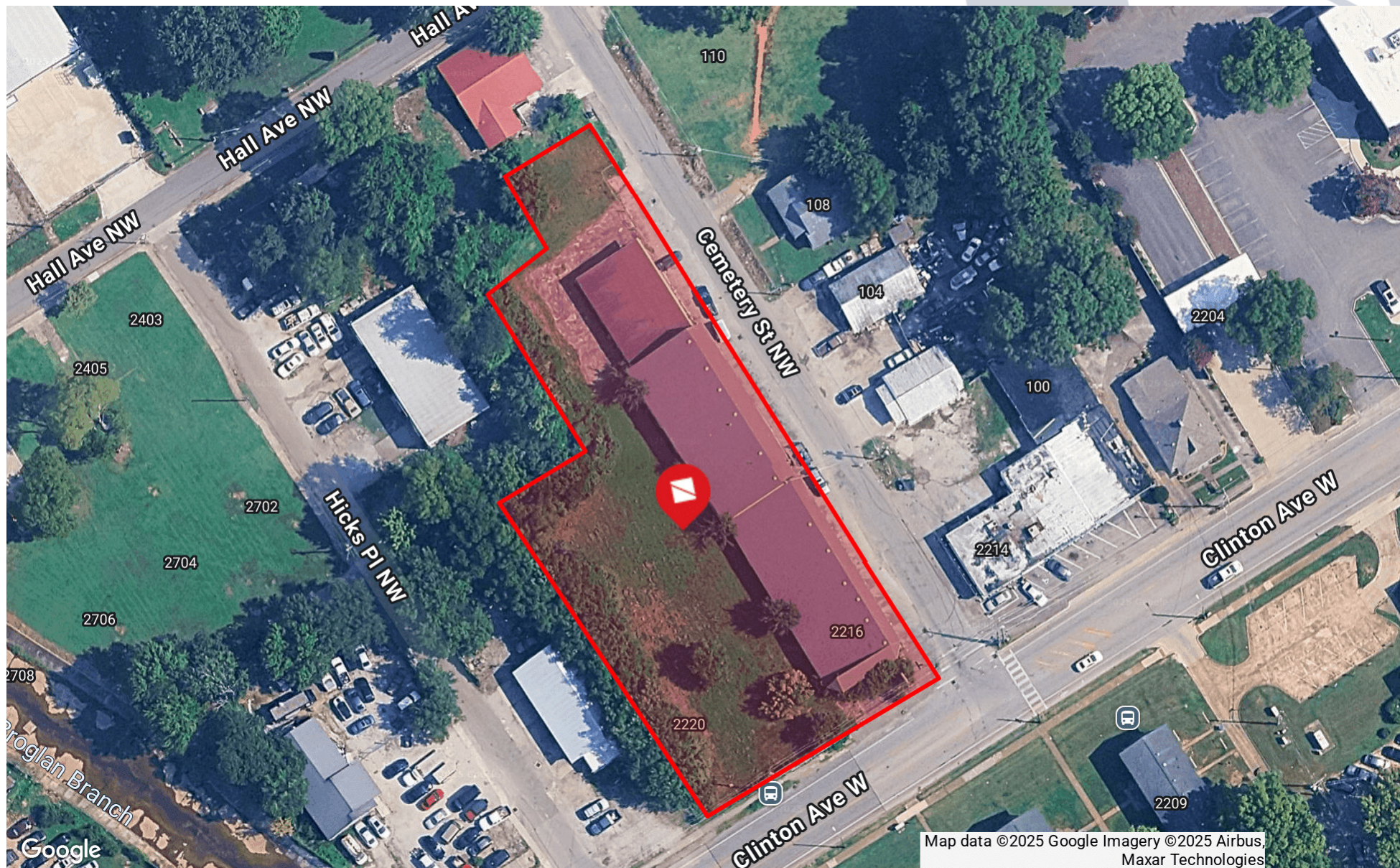


2216 Clinton Avenue West

Huntsville, AL 35804

FOR SALE

LAND



Jim Smoot
Associate Broker
(256)-533-0003
jim@samplesproperties.com

