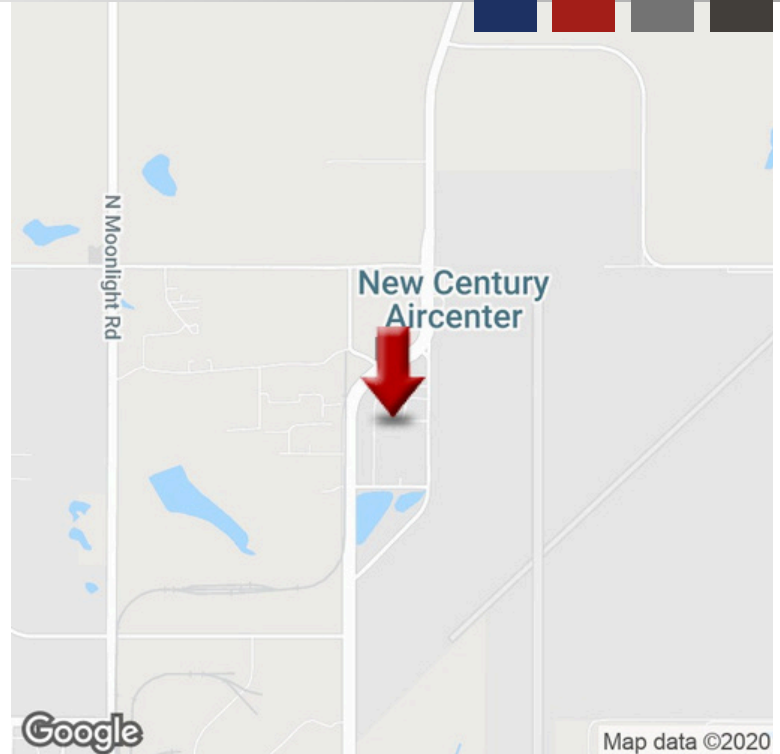


FOR LEASE

201 OVERLAND PARK PLACE, NEW CENTURY, KS 66031



PROPERTY HIGHLIGHTS

- Available property is shown in the attached floor plan and reflected as 1, 1A and 1B in the attached aerial photo
- \$4.95 per square foot Industrial Gross
- External dock to service semi's
- Trucks serving the 3 other docks will be limited in size to straight trucks
- Existing office space to be reconfigured to suit future tenant needs
- 2 Drive-ins located in the 10,097 SF warehouse/production space
- Ceiling height 10 - 18 feet
- Boiler heat throughout and air conditioned office space
- Fire suppression throughout

OFFERING SUMMARY

AVAILABLE SF: 36,317 SF

LEASE RATE: \$4.95 SF/yr
(Industrial Gross)

LOT SIZE: 1.5 ACRES

BUILDING SIZE: 110,200 SF

ZONING: PEC3 (Planned Light Industrial Park District, Research and development, light fabrication/assembly, limited industrial/manufacturing, and warehousing)



PAUL BYERS

c: 913.909.9700

e: byerscommercial@gmail.com



Byers Commercial



FOR LEASE

201 OVERLAND PARK PLACE, NEW CENTURY, KS 66031



PAUL BYERS

c: 913.909.9700

e: byerscommercial@gmail.com



Byers Commercial

KANSAS CITY
REGIONAL HOMES, INC.
REALTORS®

FOR LEASE

201 OVERLAND PARK PLACE, NEW CENTURY, KS 66031



PAUL BYERS

c: 913.909.9700

e: byerscommercial@gmail.com

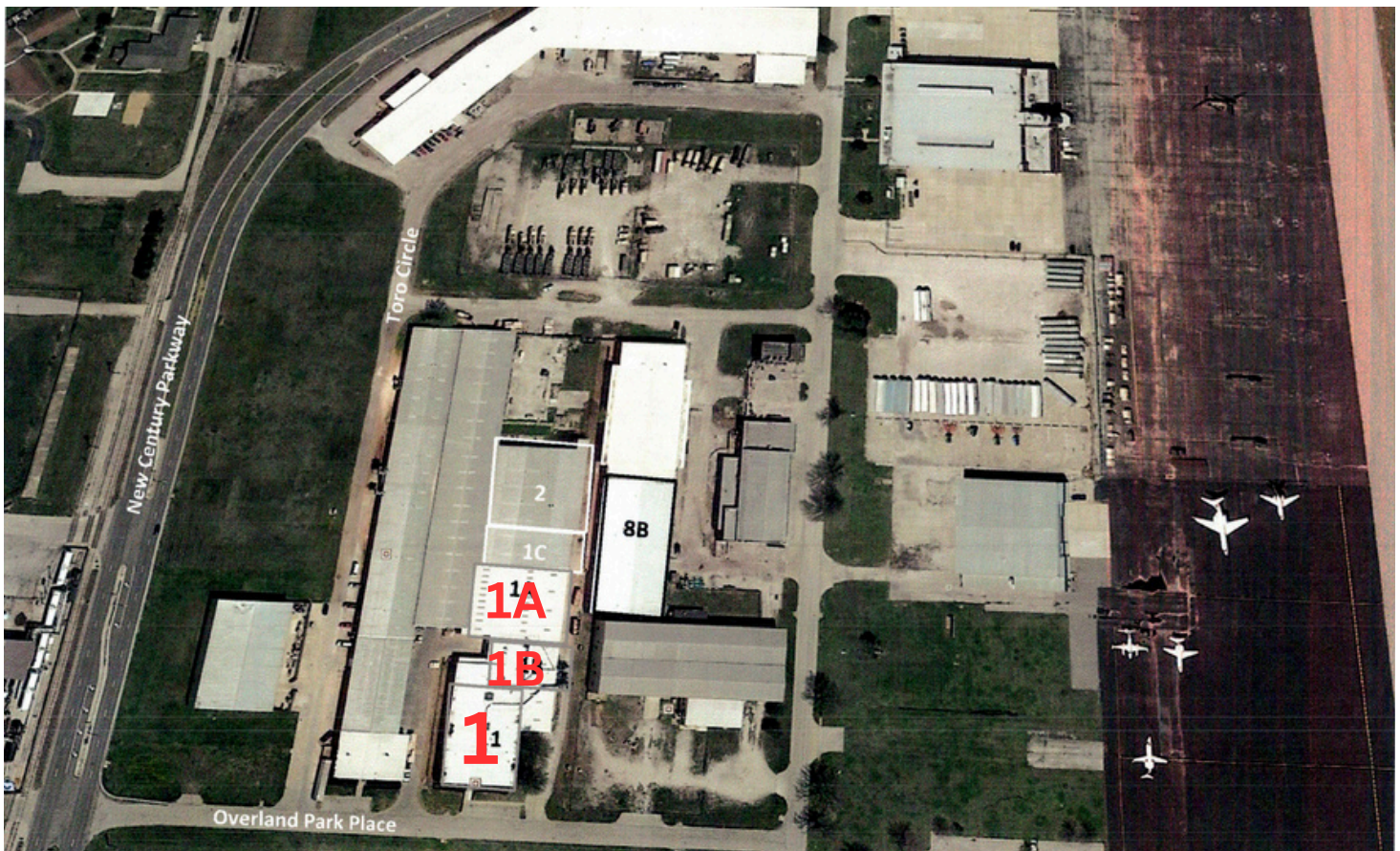


Byers Commercial

KANSAS CITY
REGIONAL HOMES, INC.
REALTORS®

FOR LEASE

201 OVERLAND PARK PLACE, NEW CENTURY, KS 66031



PAUL BYERS

c: 913.909.9700

e: byerscommercial@gmail.com



Byers Commercial



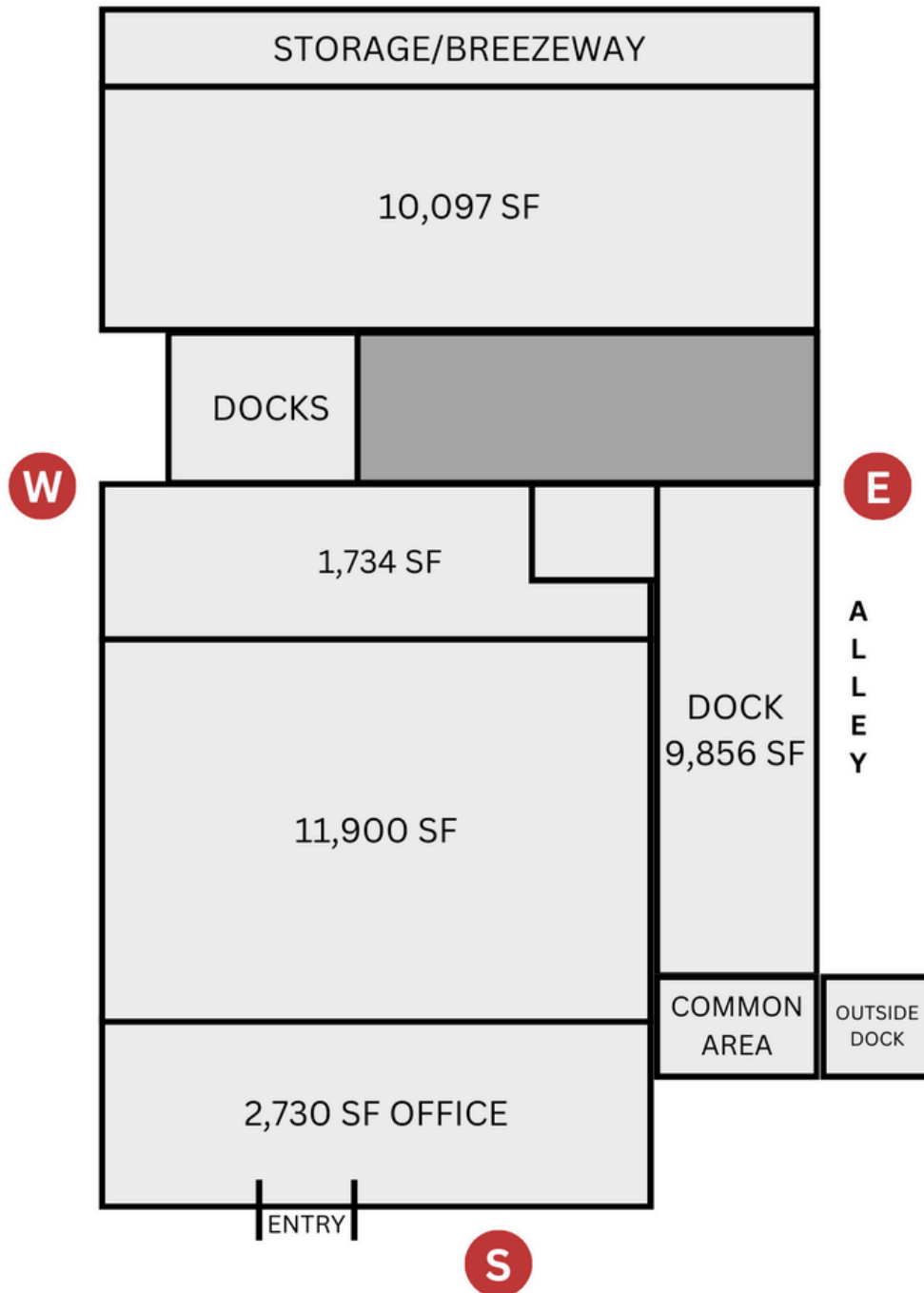
FOR LEASE

201 OVERLAND PARK PLACE, NEW CENTURY, KS 66031



FLOORPLAN

N



PAUL BYERS

c: 913.909.9700

e: byerscommercial@gmail.com



Byers Commercial

KANSAS CITY
REGIONAL HOMES, INC.
REALTORS®